

QY25E FULL HYDRAULIC TRUCK CRANE

- ◆ QY25E Truck Crane uses XZ25A truck crane special chassis, equipped with Euro II compliant 6C215-2 or WD615.58 engine or SC8DK260Q3(Euro III).
- ◆ 4-section telescopic boom, 1-section jib, double H-shaped outriggers, and single cylinder for front support elevating. Boom is telescoped sequentially and synchronously. Main and auxiliary winches can be driven individually.
- ◆ 6-section telescopic boom is made of high-tensile steel with hexagonal cross-section, high strength and heavy load lifting capacity.
- ◆ The winch has two-stage planetary reducer, compact structure and working smoothly and reliably, swing system with double-way-sliding function enables the boom to slide automatically to position during lifting operation.
- ◆ Single top and adjustable offset jib can meet special need of operation for high building and narrow site.
- ◆ Automatic moment limiter (AML) and LCD indicator equipped can dynamically display the data of working radius, boom length, boom angle, actual lifting load, etc., and the function of over-load warning ensures safe and reliable operation.
- ◆ QY25E plateau type, optional for users in plateau area, is suitable for special working environment of heavy wind and sand, lower temperature, rare air, etc.

XUZHOU CONSTRUCTION MACHINERY GROUP IMP.&EXP.CO.,LTD

Add: XCMG Headquarters, Xuzhou Economic Development Zone, Jiangsu, China 221004

Tel: European & American Dept. +86-516-87739238

Middle East Dept. +86-516-87739252

Asian Dept. +86-516-87739234

Central Asian Dept. +86-516-87739239

American & Oceania Dept. +86-516-87739237

African Dept. +86-516-87739222

Fax: +86-516-87739230

E-mail: sinomac@public.xz.js.cn

www.xcmg.com

Please contact with our district agent:

Materials and specifications are subject to change without notice.



QY25E

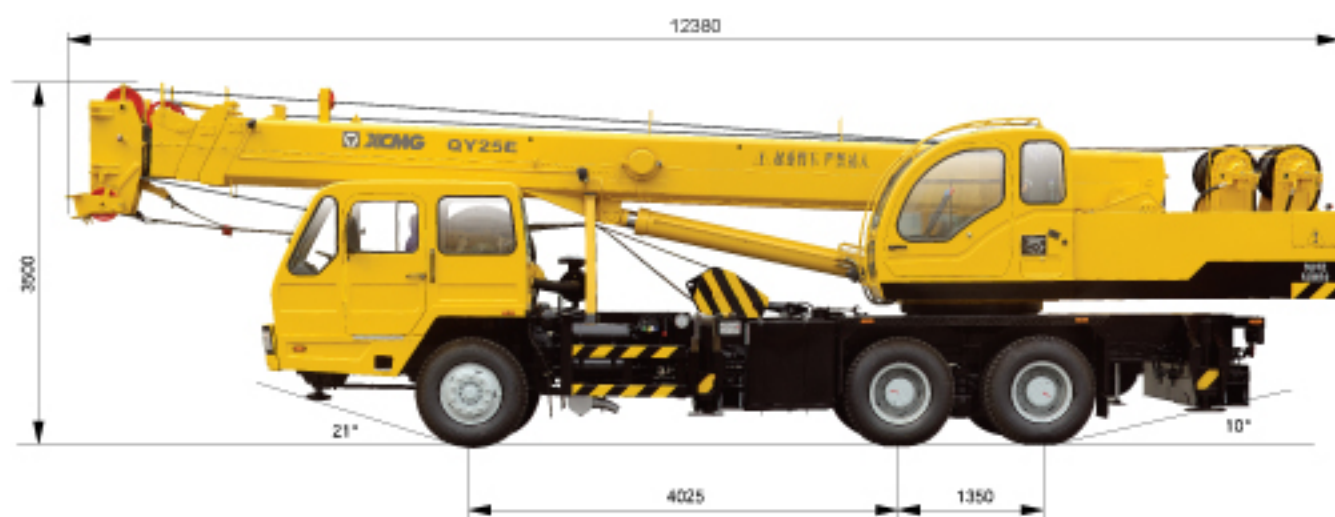
HYDRAULIC TRUCK CRANE



Max. Total Rated Lifting Load	25t
Full-extend Boom Lifting Height	31.5m
Full-extend Boom+Jib Lifting Height	39.2m

QY25E

FULL HYDRAULIC TRUCK CRANE



Overall length	12380mm
Overall width	2500mm
Overall height	3500mm

Dead weight in travel state	25400kg
Axle load	
Front axle	6530kg
Rear axle	19870kg

Engine model	HangFaWD615.58	ShanghaiC215-2	ShanghaiSC8DK260Q3
Engine rated output	175(2200kW)/(r/min)	153(2200kW)/(r/min)	192(2200kW)/(r/min)
Engine rated torque	1000(1300-1600N.m)/(r/min)	790(1400N.m)/(r/min)	1000(1400N.m)/(r/min)

Max travel speed	63km/h	63km/h	63km/h
Min turning diameter	19000mm	19000mm	19000mm
Min ground clearance	273mm	273mm	273mm
Approach angle	21°	21°	21°
Departure angle	10°	10°	10°
Baking distance(at 30km/h)	9.5m	9.5m	9.5m
Max gradeability	23%	23%	32%
Fuel consumption of 100km	-38L	-38L	-38L

Max total rated lifting load	25t
Turning radius at swing table tail	3.56m
Max load moment	
Base boom	806kN.m
Full-extend boom	521kN.m
Outrigger extension distance	
Longitudinal/Lateral	4.8×6m
Lifting height	
Base boom	10.5m
Full-extend boom	31.5m
Full-extend boom+Jib(offset 5°)	39.2m
Full-extend boom+Jib(offset 30°)	38m

Boom elevating time	60s
Full-extending	135s
Max slewing speed	3r/min
Outrigger telescoping time	
Outrigger beam extending/retracting synchronously	30/20s
Outrigger jack extending/retracting synchronously	27/30s
Hoisting speed(single rope, 2nd layer)	
Main winch with full /no load	90/120m/min
Auxiliary winch with full /no load	90/120m/min

full-extend outrigger with boom at the side or the rear

Working radius m	Boom Length 10.2m	Boom Length 13.75m	Boom Length 17.3m	Boom Length 20.85m	Boom Length 24.4m	Boom Length 27.95m	Boom Length 31.50m
	Lifting Load (kg)	Lifting Load (kg)	Lifting Load (kg)	Lifting Load (kg)	Lifting Load (kg)	Lifting Load (kg)	Lifting Load (kg)
3	25	21.5					
3.5	23.5	21.5	16.5				
4	20.5	19.5	16.5	11.5			
4.5	18.2	17.5	15.5	11.5	9.5		
5	16.1	16	14.5	11.2	9.5	8.5	
5.5	14.8	14.5	13.5	10.8	9.5	8.5	
6	13.5	13.2	12.5	10.5	9.5	8.1	6.5
6.5	12.2	12	11.5	10.1	9.2	7.8	6.5
7	11.2	11	10.8	9.6	9	7.7	6.5
7.5	10.4	10.2	10	9.1	8.7	7.3	6.2
8	9.6	9.5	9.4	8.6	8.3	7	6
8.5	8.8	8.7	8.6	8.2	8	6.7	5.8
9		8.2	8.2	7.8	7.7	6.5	5.5
10		7.4	7	7	7.1	6.1	5
12			5	5.1	5.2	5.2	4.3
14			3.5	3.9	3.9	3.9	3.8
16				3.0	3	3	3.2
18				2.0	2.2	2.3	2.5
20					1.5	1.7	2
22						1.2	1.5
24						0.8	1.1
26							0.8

Total rated lifting load for jib (Table 2)

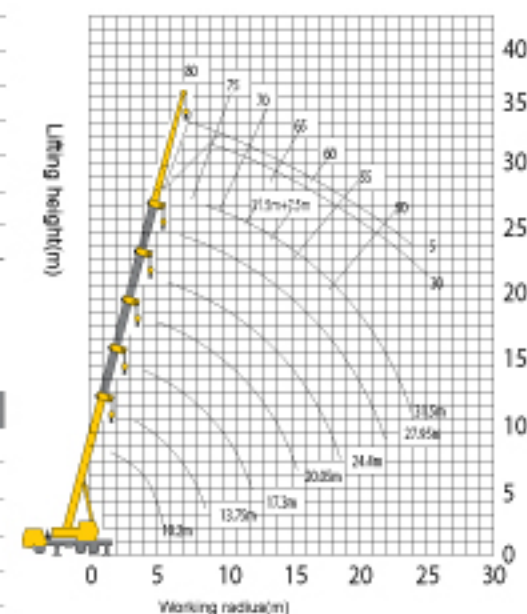
Boom angle	7.5mjib	
	jib-offset 5°	jib-offset 30°
80°	2500	1250
75°	2500	1250
70°	2050	1150
65°	1750	1100
60°	1550	1050
55°	1300	1000
50°	1050	850

Notes:

◆ The data in the table are the max lifting capacity when the crane is set up on level and firm ground.

◆ The total rated lifting load in the table includes the weight of hook block and slings(Main hook block 230kg, auxiliary hook block 60kg).

◆ The working radius in the table is the actual value including boom deflection under load. So lifting operation should be performed according to the working radius, lifting height is reference value.



▲ Lifting height curves