

QY16C FULL HYDRAULIC TRUCK CRANE

- ◆ QY16C truck crane uses self-made truck crane special chassis, and the engine uses the Shangchai 6C215-2 or Hangzhou engine WD415.21 or SC8DK230Q3 (Euro III).
- ◆ A gravity-lowering device fitted in the winch improves working efficiency. Constant closed external meshing brake makes operation safe and reliable.
- ◆ Newly designed 3-section boom of all-round angle hexagonal cross-section uses single cylinder plus wire ropes for telescoping, increasing load lifting capacity.
- ◆ Boom-belly-mounted jib, double cylinders for front support elevating, fully hydraulic drive and double H-shaped outriggers.
- ◆ Large box type frame, high torsion resistance and wide outrigger extension greatly improve load lifting capacity.
- ◆ Meticulously designed guide rollers avoid rope disorder on the crane.
- ◆ Slewing gear with cycloid cylindrical lantern gear reducer absorbs shocking for smooth work.
- ◆ All steel driver's cab and operator's cab. Air conditioner in driver's cab is for option. Driver's cab equipped with luxurious adjustable seat and adjustable steering wheel makes operation more convenient.
- ◆ Air dryer added in the air circuit improves the reliability of the air system.
- ◆ Well-equipped safety devices, such as hoist height limiter, working radius indicator, etc., and also with illuminators for night's operation.
- ◆ QY16C plateau type, available for option of customers in plateau area, is suitable for operation in plateau foul conditions.

XUZHOU CONSTRUCTION MACHINERY GROUP IMP.&EXP.CO.,LTD

Add: XCMG Headquarters, Xuzhou Economic Development Zone, Jiangsu, China 221004

Tel: European & American Dept. +86-516-87739238

Middle East Dept. +86-516-87739252

Asian Dept. +86-516-87739234

Central Asian Dept. +86-516-87739239

American & Oceania Dept. +86-516-87739237

African Dept. +86-516-87739222

Fax: +86-516-87739230

E-mail: sinomac@public.xz.js.cn

www.xcmg.com

Please contact with our district agent:

Materials and specifications are subject to change without notice.



QY16C

HYDRAULIC TRUCK CRANE

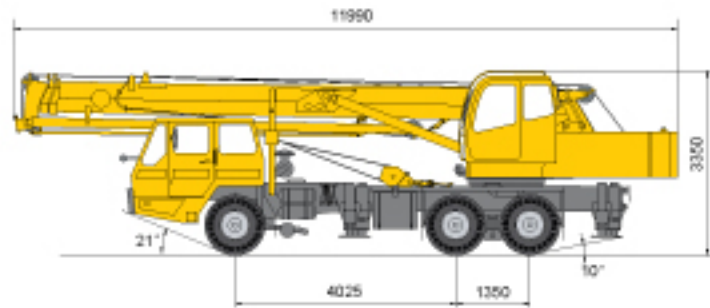


Max. Total Rated Lifting Load	16t
Full-extend Boom Lifting Height	23.6m
Full-extend Boom+Jib Lifting Height	30.8m

QY16C

FULL HYDRAULIC TRUCK CRANE

Overall length	11990mm
Overall width	2500mm
Overall height	3350mm



▲ Outline dimensions

Dead weight in travel state	22900kg
Axle load	
Front axle	5240kg
Rear axle	17660kg

Engine model	Shanghai 6C215-3(Euro II)	Shanghai WD415.2(Euro II)	SC6DK230Q3(Euro III)
Engine rated output	156(210kW)/min	155(210kW)/min	170(230kW)/min
Engine rated torque	796(1400N.m)/min	820(1400N.m)/min	838(1400N.m)/min
Max travel speed	2200r/min	2200r/min	2200r/min

Max travel speed	70km/h	70km/h	70km/h
Min turning diameter	20000mm	20000mm	20000mm
Min ground clearance	270mm	270mm	270mm
Approach angle	21°	21°	21°
Departure angle	10°	10°	10°
Braking distance(at 30km/h)	9.5m	9.5m	9.5m
Max gradeability	24%	26%	26%
Fuel consumption of 100km	~35L	~35L	~35L

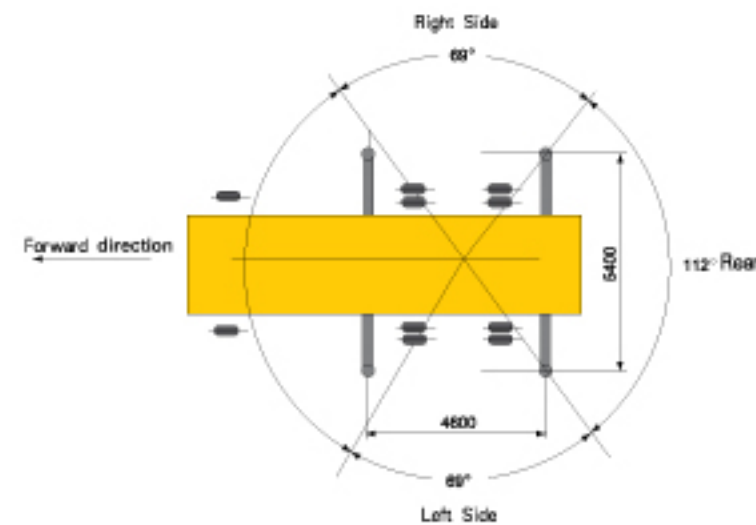
Max total rated lifting load	16t
Min rated working radius	3m
Turning radius at swing table tail	3.12m
Max load moment	
Base boom	711kN.m
Full-extend boom	449kN.m
Full-extend boom+Jib	109kN.m
Outrigger extension distance	
Longitudinal/Lateral	4600/5400mm
Lifting height	
Base boom	9.9m
Full-extend boom	23.6m
Full-extend boom+Jib	30.8m

Boom raising time	60s
Boom full extending time	75s
Max slewing speed	2.5°/min
Outrigger telescoping time	
Outrigger beam extending/retracting synchronously	28/26s
Outrigger jack extending/retracting synchronously	32/30s
Hoisting speed(single rope)	
Main winch with full load/no load	54/100m/min
Auxiliary winch with full load	54/100m/min

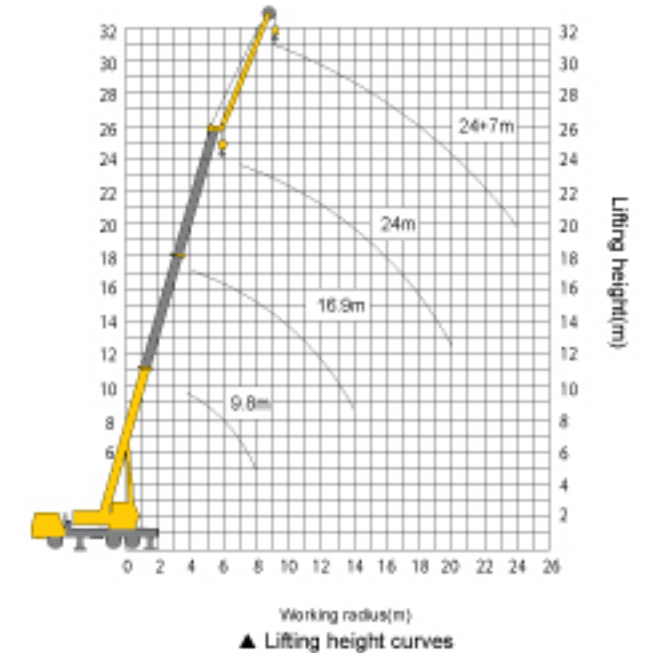
3-section hexagonal telescopic boom



Working radius m	Base boom 9.9m		Mid-extend boom 16.9m		Full-extend boom 24m		Full-extend boom+Jib 24+7m	
	Lifting Load (kg)	Lifting Height (m)	Lifting Load (kg)	Lifting Height (m)	Lifting Load (kg)	Lifting Height (m)	Lifting Load (kg)	Lifting Height (m)
3.0	16000	9.9						
3.5	16000	9.7						
4.0	16000	9.5	12000	17.1				
4.5	14900	9.2	11400	16.9				
5.0	14100	8.8	10800	16.8				
5.5	13200	8.4	10200	16.6				
6.0	11520	7.8	9700	16.3				
7.0	8610	6.6	8700	15.8	5900	23.6		
8.0	6700	4.8	6900	15.2	5500	23.2		
9.0			5610	14.6	5100	22.8	2000	30.8
10.0			4640	13.7	4500	22.3	1900	30.5
12.0			3070	11.7	3380	21.1	1550	29.6
14.0			2290	8.8	2580	19.7	1300	28.6
16.0					1970	17.8	1080	27.4
18.0					1520	15.5	830	26.0
20.0					1200	12.4	600	24.3
22.0							370	22.3
24.0							170	19.8
Weight of hook block	216kg						48kg	
Parts of line	6		5		3		1	



▲ Working Area



▲ Lifting height curves

- ◆ The data in the table are the max lifting capacity when the crane is set up on level and firm ground.
- ◆ The total rated lifting load in the table includes weight of hook block and slings.
- ◆ The working radius in the table is the actual value including boom deflection under load. So lifting operation should be performed according to the working radius, irrespective of lifting height.
- ◆ Lifting capacity of main hook block should be subtracted 400kg if the jib is mounted on the main boom head.
- ◆ The lift capability of the single pulley at the top of the boom is same to the 24m main boom, but its top limit is 2t.
- ◆ You must set up the legs safely before you begin to work.
- ◆ permitting to work under wind force 6.