

# CX2000

HYDRAULIC CRAWLER CRANE

## **S**pecifications

**HITACHI**

# CX2000

HYDRAULIC CRAWLER CRANE

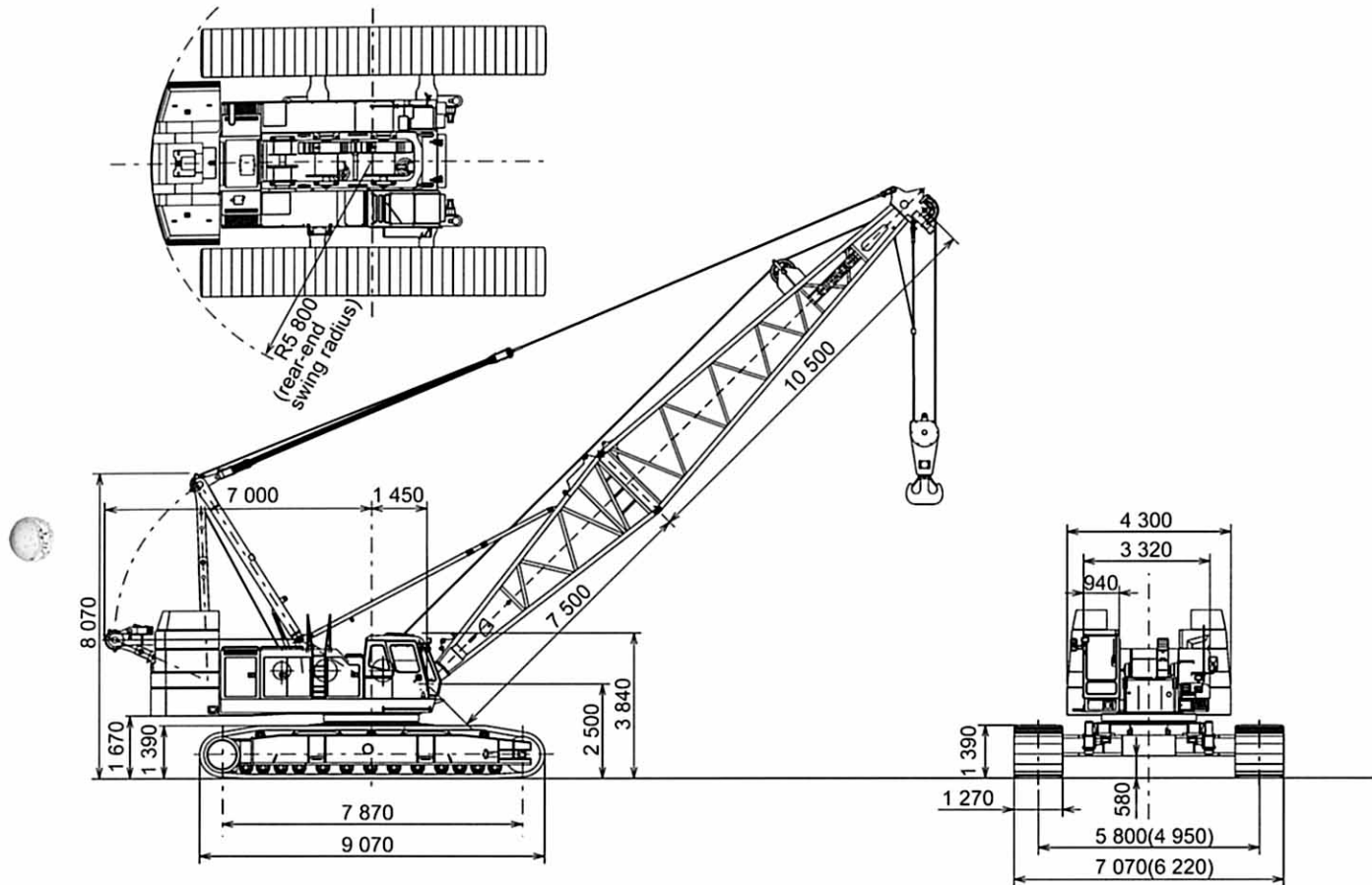


<b>CRAWLER CRANE</b>	■ Dimensions ■ Specifications	3
	■ Working Ranges	8
	■ Crane Ratings	9
	Main Boom in 360° Working Area	9
	Auxiliary Jib in 360° Working Area	10
	Main Boom with Auxiliary Jib in 360° Working Area	11
	Jib in 360° Working Area	12
	Main Boom with Jib in 360° Working Area	21
	■ Crane Boom Construction ■ Crane Jib Construction	
	■ Component weights and Dimensions for Transport	28
<b>FULL LUFFING TOWER CRANE</b>	■ Dimensions ■ Tower Jib Construction ■ Specifications	29
	■ Rated Loads for Tower Crane (36 m) ■ Working Ranges	30
	■ Rated Loads for Tower Crane (39 m) ■ Working Ranges	31
	■ Rated Loads for Tower Crane (42 m) ■ Working Ranges	32
	■ Rated Loads for Tower Crane (45 m) ■ Working Ranges	33
	■ Rated Loads for Tower Crane (48 m) ■ Working Ranges	34
	■ Rated Loads for Tower Crane (51 m) ■ Working Ranges	36
	■ Rated Loads for Tower Crane (54 m) ■ Working Ranges	38
	■ Rated Loads for Tower Crane (57 m) ■ Working Ranges	40
	■ Rated Loads for Tower Crane (60 m) ■ Working Ranges	42
	■ Tower Boom Construction ■ Tower Jib Construction	
■ Component weights and Dimensions for Transport	44	
<b>TECHNICAL DATA</b>	■ Standard and Optional Equipment	45-46

Note: "ton" or "t" implies metric tons in this catalog.

## ■ Dimensions

Unit: mm



- Notes : 1. Dimensions shown in ( ) are with side frames fully retracted.  
2. Self-loading device is option.

## ■ Specifications

(1 ton = 1 000 kg)

Maximum rated load	ton × m	200 × 5.0
Basic boom length	m	18
Max. boom length	m	90
Jib length	m	13–37
Max. boom with jib length	m	72+37
Line speeds		
Main hoist drum*	m/min	110 / 62 / 31
Aux. hoist drum*	m/min	110 / 62 / 31
Boom hoist drum*	m/min	27 × 2
Swing speed	min <sup>-1</sup> (rpm)	1.9 (1.9) / 1.1 (1.1)
Travel speed	km/h	1.1/0.7
Gradeability	%(°)	30 (16)
Engine model		
Rated horsepower	kw/min <sup>-1</sup> (PS/rpm)	221 / 2 000 (300 / 2 000)
Ground pressure	kPa (kgf/cm <sup>2</sup> )	93.1 (0.95)
Operating weight	ton	190
(Equipped with 18 m boom and 200 ton capacity hook)		

- Notes : 1. Data expressed above are SI units (International System of Unit), followed by conventional units in ( ).  
2. Line speeds marked with asterisk (\*) will vary with the load.



# SUPERSTRUCTURE



## Engine

Model .....	Isuzu A-6RB1T
Type .....	Water-cooled, 4-cycle, 6-cylinder, direct fuel injection type diesel engine
Rated horsepower .....	221 kW (300 PS) at 2 000 min <sup>-1</sup> (DIN 6 271, net) (2 000 rpm)
Maximum torque .....	1 226 N·m (125 kgf·m) at 1 400 min <sup>-1</sup> (1 400 rpm)
Piston displacement .....	13.7 L
Fuel tank capacity .....	415 L
Electric system .....	DC 24 V



## Main and Auxiliary Hoist Mechanism

- The Hitachi CX2000 is equipped with dual hoist mechanisms, each consisting of independent main and auxiliary hoist drums driven by a hydraulic motor.
- Hoisting and lowering the load is achieved by forward/reverse rotation of the hydraulic motor.
- Power lowering is carried out with a hydraulic brake.
- Hoisting and lowering can be carried out at three speeds-fast, medium and slow-to suit job requirements.
- Each drum is fitted with a friction band-type brake. This allows free fall (rapid lowering) of the hook.
- Main and auxiliary hoist drums are each fitted with a pawl-type drum lock to positively hold the load in the air.
- The drum brake is an external contracting friction band-type using durable non-asbestos lining.
- The brake is controlled by the hydraulic servo system to reduce control force. Two brake modes are available; auto brake or free fall.



## Boom Hoist Mechanism

- Boom hoisting/lowering is done by forward/reverse rotation of a hydraulic motor. Boom lowering is made by power lowering through a hydraulic brake.
- Both hydraulic brake and spring-set/hydraulic-released multiplate disc type brake offer positive stopping of the boom. When the boom is hoisted or lowered, brakes are automatically released.
- Drum pawl lock is manually controlled from operator's seat.



## Swing Mechanism

- Independent operation
- Driven by two hydraulic motors through reduction gear. Swing speeds are freely controllable from zero to maximum speed with a single lever. Two swing speeds are selectable.

### Swing Brake

The disc-type swing brake can be hydraulically applied by the brake switch on the swing lever.

### Swing Lock

Manual mechanical-lock with a rod tip engaged in the holder of the track frame during transportation.

### Swing Circle

Single-row shear-type ball bearing with heat-treated internal gear.



## Revolving Frame

All welded steel construction, stress-relieved, precision-machined for rigidity and strength.

### Gantry

Lowerable for transportation.

Speedy, easy raising/lowering are possible with optional hydraulic cylinders.

### Counterweight

Total weight 81 600 kg

#### Upper counterweight

Consisting of 9 sections:

One	18 200 kg
One	16 700 kg
One	5 300 kg
One	8 500 kg
One	8 400 kg
Two	5 000 kg
One	6 100 kg
One	6 000 kg



#### Lower counterweight (Track frame counterweight)

Two	1 200 kg
-----	----------



## Boom

### Tubular Chord Crane Boom

2 100 mm wide by 2 100 mm deep at connection, lattice construction using high-tensile steel tubular chords

- Basic boom ..... Total length 18.0 m, 2-piece construction; upper section 10.5 m and lower section 7.5 m
- Boom point..... Offset boom point, 8 sheaves mounted on anti-friction bearings on boom top
- Boom inserts ..... 3.0 m, 6.0 m, 9.0 m and 12.0 m long available
- Connection type ..... Pin-connected
- Boom backstop ..... Dual-rail, telescopic tubular construction with spring damper
- Boom hoist bridle .... Serves as connection between pendants and boom hoist wire rope reeving, equipped with 9 sheaves for 18-part boom hoist wire rope reeving

### Crane Jib

1 150 mm wide by 900 mm deep at connection, lattice construction using high-tensile steel tubular chords

- Jib length ..... Total length 13.0 m, 3-piece construction; upper section 5.0 m, lower section 5.0 m and 3.0 m jib insert
- Jib point ..... 1 sheave (560 mm PCD) mounted on anti-friction bearings on jib top
- Jib insert ..... 6.0 m long available
- Connection type ..... Pin-connected
- Auxiliary jib..... Optional. Attachable to the main boom top to hoist the light load quickly with a single rope

**Note :** Boom insert, crane jib, or auxiliary jib can be attached to the basic boom when needed. However, both crane jib and auxiliary jib cannot be attached simultaneously to the boom.

### Tubular Chord Tower Crane Boom

2 100 mm wide by 2 100 mm deep at connection, lattice construction using high-tensile steel tubular chords

- Tower boom length.. 36.0 m, minimum  
60.0 m, maximum
- Tower inserts..... 3.0 m, 6.0 m and 9.0 m tower inserts are in common with crane boom inserts
- Connection type ..... Pin-connected
- Tower backstop ..... Dual-rail, telescopic tubular construction with spring damper
- Tower hoist bridle .... Serves as connection between pendants and boom hoist wire rope reeving, equipped with 9 sheaves for 18-part boom hoist wire rope reeving

### Tower Jib

- Jib ..... 1 400 mm wide by 1 400 mm deep at connection, lattice construction using high-tensile steel tubular chords
- Jib length ..... 28.0 m to 52.0 m
- Jib inserts ..... 3.0 m, 6.0 m and 9.0 m long available
- Connection type ..... Pin-connected
- Tower jib hoist bridle .. Serves as connection between tower jib boom pendants and tower jib boom hoist wire rope reeving, equipped with 4 sheaves (504 mm PCD) for 8-part tower jib hoist wire rope reeving



## Operator's Cab

All-weather, well-ventilated, roomy operator's cab with good visibility. The independent cab is insulated against noise and vibration. Sliding, fold-in windshield swings up and stores in roof. Adjustable reclining seat

# HYDRAULIC SYSTEM

- 4 variable displacement piston pumps allow both independent and combined operations of all functions.
- Variable displacement piston pumps control working speeds, and make effective use of engine horsepower.

	Pump-1	Pump-2
Type of pump	Variable displacement pump	
Pressure setting	30.4 MPa (310 kgf/cm <sup>2</sup> )	30.4 MPa (310 kgf/cm <sup>2</sup> )
Oil flow	274 L/min	274 L/min

	Pump-3	Pump-4	Pump-5
Type of pump	Variable displacement pump	Variable displacement pump	Gear pump
Pressure setting	30.4 MPa (310 kgf/cm <sup>2</sup> )	23.0 MPa (235 kgf/cm <sup>2</sup> )	4.9 MPa (50 kgf/cm <sup>2</sup> )
Max. Oil flow*	274 L/min	220 L/min	49.3 L/min

\*with non-loaded condition

## Main and Auxiliary Hoist Motors

Swashplate-type axial piston motors with counterbalance valves

### Boom Hoist Motor

Bent axis motor with counterbalance valve

### Swing Motor

Two Swashplate-type axial piston motor

### Travel Motors

Swashplate-type axial piston motors with brake valve and spring-set/hydraulic-released multiplate disc brake

## Relief and Brake Valves

- Each hydraulic circuit incorporates large-capacity relief valves to protect circuit from overload and shock load.
- Counterbalance valves, provided for hoist motor, compensate load lowering and prevent accidental load drop if hydraulic power is suddenly reduced.
- Brake valves (consisting of relief valve and counterbalance valve) are provided for travel circuit.

## Pressure Settings

### Main Circuit

- Main relief valves
  - Hoist (main and aux.) ..... 30.4 Mpa (310 kgf/cm<sup>2</sup>)
  - Swing ..... 23.0 MPa (235 kgf/cm<sup>2</sup>)
- Overload relief valves
  - Hoist (main and aux.) circuits ..... 30.4 MPa (310 kgf/cm<sup>2</sup>)
  - Boom hoist circuit ..... 30.4 MPa (310 kgf/cm<sup>2</sup>)
  - Travel circuit ..... 30.4 MPa (310 kgf/cm<sup>2</sup>)

### Pilot Circuit

- Main relief valve ..... 4.9 MPa (50 kgf/cm<sup>2</sup>)

## Line Filters

High-filtration 10 μm full-flow filter element is incorporated in the return line. Pilot filter and suction filter are provided in each circuit.

# UNDERCARRIAGE

## Traction mechanism

- Each track is driven by a swashplate-type axial piston motor through reduction gear. This mechanism allows counter-rotation of tracks for maneuverability in close quarters.
- When the lever is in neutral position, both hydraulic brake and spring-set/hydraulic-released multiplate disc brake are automatically applied for stopping.

## Track Frame

All-welded, stress-relieved, box-section construction

## Side Frames

All-welded, stress-relieved, box-section construction

## Self-Loading Device / Side Frame Removal Device (Optional)

With the self-loading device / side frame removal device, the basic machine can be jacked up and loaded on to a trailer, and both side frames can be removed. Travel motor piping is connected via self-seal couplings for quick disconnection.

## Track Shoes

Heat-treated alloy steel castings with induction-hardened roller path and driving lugs. Shoes are connected by induction-hardened steel pins.

No. of upper rollers (each side) .....	3
No. of lower rollers (each side) .....	13
No. of track shoes (each side) .....	68
Shoe width .....	1 270 mm



# CONTROLS

## Boom, Main and Auxiliary Hoist, Swing and Travel

Remote controlled hydraulic servo. Working speed can be precisely controlled according to lever stroke.

### ● Electric Accelerator Grip

Engine horsepower can be controlled according to job needs by electric finger-touch grip atop the swing lever, accelerator lever and accelerator pedal.

### ● Monitor Telling Machine Conditions

With the monitor, the operator can check, at a glance, engine oil pressure, water temperature and fuel level, as well as levels of hydraulic oil, engine oil and coolant. The red light turns on and the buzzer sounds in the event of an abnormality.

# SAFETY DEVICE

## Boom Angle Indicator

Mechanical-type boom angle indicator is provided at boom foot.

## Counterbalance Valves (Brake Valves)

Counterbalance valves are each incorporated in travel motors, boom hoist motor, and main and auxiliary hoist motors. If the hydraulic line is broken, this valve is automatically actuated to prevent motor rotation.

## Spring-Set/Hydraulic-Released Multiplate Disc Type Travel Brakes

### Swing Lock and Swing Parking Brake

### Drum Locks (Electric Type)

A pawl-type drum locks, provided at main drum, auxiliary drum and be drum.

### Lever Locks

Main and auxiliary hoist levers, boom hoist lever, and travel levers are each fitted with lock mechanisms to prevent mishandling.

## Devices for Crane Operation

### ● Moment Limiter

On the moment limiter, analog displays and pictorial load indications are functionally arranged for easy reading.

### ● Hook Overhoist Prevention Device

When the hook reaches its hoist limit, the bell sounds and the auto-stop automatically actuates at the same time.

### ● Boom Overhoist Prevention Device

When the boom reaches its angle limit, the buzzer alarm sounds and boom hoisting automatically stops at the same time. The telescopic-type boom backstop is also provided.

### ● Secondary Boom Overhoist Prevention Device

In addition to the hook overhoist prevention device and boom overhoist prevention device, the secondary boom overhoist prevention device is provided. It actuates at a boom angle of 82° to avoid overhoisting of the boom and / or hook.

### ● Pilot Control Shut-off Lever

The pilot control shut-off lever shuts out the hydraulic pilot pressure to pilot control valves. With the pilot control shut-off lever in the LOCK position, the machine will not operate even if the lever is accidentally shifted.

### ● Fail-safe mechanism

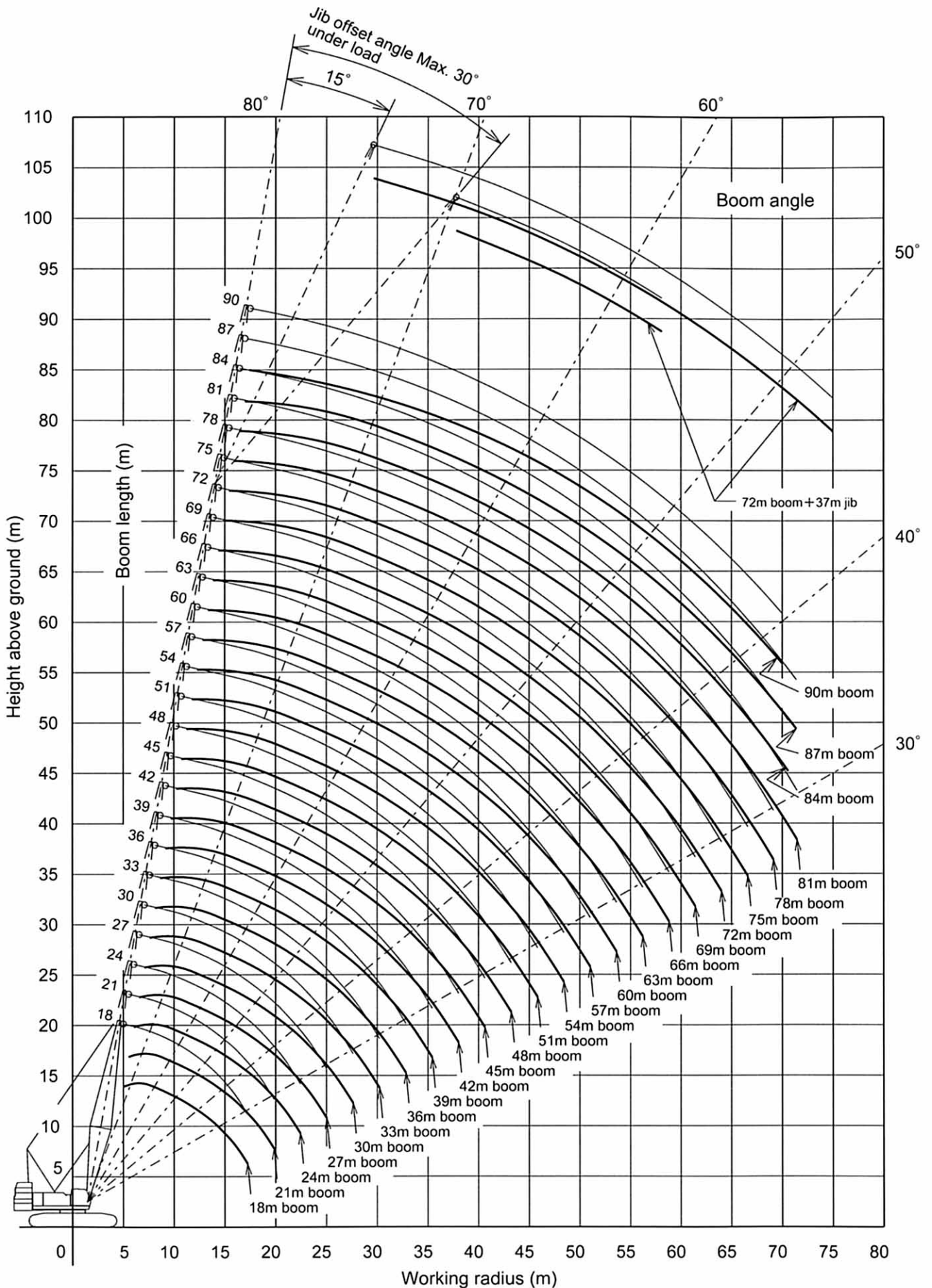
The related movements stop automatically if an electric wire is broken or an electric device fails.



# SERVICE REFILL CAPACITIES

	Liters
Fuel tank .....	415
Engine coolant .....	47
Engine oil .....	50
Pump transmission .....	2.5
Boom hoist reduction device .....	15
Winch hoist reduction device .....	15 × 2
Swing reduction device .....	9.2 × 2
Travel final device .....	41 × 2
Hydraulic system, including tank capacity .....	475
Hydraulic tank .....	257

■ Working Ranges



Note : Working ranges shown are under unloaded condition.















# 75% Tipping Load

## ■ Crane Ratings (Jib in 360° Working Area): Without Mast (4)



Main Boom Length (m)	63													
Jib Boom Length (m)	13			19			25			31			37	
Offset Angle (°)	15		30	15		30	15		30	15		30	15	30
Working Radius (m)	2 rope reevings	1 rope reeving	1 rope reeving	2 rope reevings	1 rope reeving	1 rope reeving	1 rope reeving	1 rope reeving	1 rope reeving	1 rope reeving	1 rope reeving	1 rope reeving	1 rope reeving	1 rope reeving
18.0	25.00	18.3×13.00												
20.0	23.70	13.00	21.1×13.00	20.5×18.00	20.8×13.00									
22.0	21.80	13.00	13.00	18.00	13.00			23.3×12.00						
24.0	20.15	13.00	13.00	17.80	13.00	25.0×10.60	11.95			25.9×6.90				
26.0	18.70	13.00	12.95	17.40	13.00	10.50	11.65			6.90				
28.0	17.40	13.00	12.60	17.00	13.00	10.20	11.35	28.8×8.45		6.70			28.4×4.00	
30.0	16.20	13.00	12.25	16.30	13.00	9.90	11.10	8.30		6.50			3.85	
32.0	15.15	13.00	11.95	15.25	13.00	9.65	10.85	8.05		6.30	32.7×5.10		3.75	
34.0	14.20	13.00	11.65	14.25	13.00	9.40	10.60	7.85		6.15	5.05		3.60	
36.0	13.35	12.90	11.40	13.40	13.00	9.15	10.35	7.60		6.00	4.95		3.50	36.6×2.70
38.0	12.50	12.15	11.15	12.60	12.25	8.90	10.15	7.40		5.85	4.90		3.40	2.70
40.0	11.75	11.45	10.90	11.85	11.55	8.70	9.95	7.25		5.70	4.80		3.30	2.60
42.0	11.05	10.80	10.70	11.15	10.90	8.50	9.75	7.05		5.55	4.70		3.20	2.55
44.0	10.40	10.20	10.40	10.55	10.30	8.30	9.60	6.90		5.45	4.65		3.10	2.50
46.0	9.60	9.60	9.80	9.95	9.75	8.15	9.40	6.70		5.35	4.55		3.00	2.45
48.0	8.85	9.05	9.25	9.25	9.20	8.00	9.25	6.55		5.20	4.50		2.95	2.40
50.0	8.20	8.40	8.65	8.55	8.70	7.85	8.80	6.45		5.10	4.40		2.85	2.35
52.0	7.55	7.75	8.00	7.95	8.15	7.70	8.35	6.30		5.00	4.35		2.80	2.30
54.0	7.00	7.20	7.40	7.35	7.55	7.55	7.90	6.15		4.90	4.30		2.70	2.25
56.0	6.40	6.60	6.80	6.80	7.00	7.30	7.35	6.05		4.80	4.25		2.65	2.20
58.0	5.80	6.00	6.20	6.25	6.50	6.80	6.80	5.95		4.75	4.20		2.60	
60.0	5.30	5.50	5.65	5.75	5.95	6.30	6.35	5.85		4.65	4.15		2.50	
62.0	4.80	5.00	5.15	5.25	5.45	5.75	5.85	5.75		4.55	4.10		2.45	
64.0	4.40	4.55	4.65	4.75	4.95	5.25	5.35	5.65		4.50	4.10		2.40	
66.0	3.95	4.10	4.20	4.35	4.55	4.75	4.90	5.25		4.45	4.05		2.35	
68.0	3.55	3.75	3.80	3.95	4.15	4.30	4.50	4.80		4.35	4.00		2.30	
70.0	68.8×3.35	69.0×3.55	69.5×3.50	3.55	3.75	3.90	4.10	4.40		4.30	4.00		2.25	
72.0				3.20	3.40	3.50	3.70	4.00		4.00	3.95		2.25	
74.0				2.90	3.05	3.15	3.35	3.60		3.65	3.95		2.20	
76.0				74.6×2.75	74.8×2.90	75.5×2.90	3.05	3.25		3.30	3.65			
78.0							2.75	2.90		3.00	3.30			
80.0							2.45	2.55		2.70	2.95			
82.0								80.1×2.40	80.8×2.40	2.40	2.65			
84.0										83.6×2.20	2.35			
85.0											2.20			

※See notes on page 12.

# 75% Tipping Load

## ■ Crane Ratings (Jib in 360° Working Area): With Mast (1)



Main Boom Length (m)		45												
Jib Boom Length (m)		13			19			25			31		37	
Offset Angle (°)		15		30		15		30		15		30		
Working Radius (m)		2 rope reevings		1 rope reevings		2 rope reevings		1 rope reevings		1 rope reevings		1 rope reevings		
14.9	25.00	15.1×13.00												
16.0	25.00	13.00		17.4×18.00		17.7×13.00								
18.0	25.00	13.00		13.00		18.00		13.00						
20.0	24.45	13.00		13.00		17.95		13.00		21.9×10.60		20.2×12.00		
22.0	22.95	13.00		13.00		17.40		13.00		10.60		11.75		
24.0	21.65	13.00		12.55		16.90		13.00		10.30		11.40		
26.0	20.50	13.00		12.10		16.45		13.00		9.95		11.05		
28.0	19.45	13.00		11.70		16.00		13.00		9.60		10.75		
30.0	18.55	13.00		11.35		15.60		13.00		9.25		10.45		
32.0	17.70	13.00		11.00		14.95		13.00		8.95		10.20		
34.0	16.95	13.00		10.70		14.25		13.00		8.70		9.95		
36.0	16.25	13.00		10.45		13.65		13.00		8.45		9.70		
38.0	15.10	13.00		10.20		13.10		13.00		8.20		9.50		
40.0	13.95	13.00		9.95		12.60		12.65		8.00		9.25		
42.0	12.95	13.00		9.75		12.10		12.20		7.80		9.10		
44.0	12.05	12.15		9.55		11.70		11.75		7.60		8.90		
46.0	11.20	11.35		9.40		11.30		11.35		7.45		8.75		
48.0	10.45	10.60		9.25		10.80		10.95		7.30		8.60		
50.0	9.80	9.90		9.15		10.10		10.25		7.15		8.45		
52.0	9.20	9.30		9.05		9.50		9.60		7.05		8.30		
54.0	53.2×8.85		53.5×8.85		53.9×8.80		8.90		9.05		6.95		8.20	
56.0						8.40		8.50		6.85		8.10		
58.0						7.90		8.00		6.80		8.00		
60.0						59.0×7.65		59.2×7.70		59.9×6.80		7.75		
62.0										7.35		5.30		
64.0										6.95		5.30		
66.0										65.0×6.75		65.9×5.25		
68.0										4.15		4.00		
70.0										4.05		4.00		
71.9										70.8×4.05		4.00		

Main Boom Length (m)		48													
Jib Boom Length (m)		13			19			25			31		37		
Offset Angle (°)		15		30		15		30		15		30			
Working Radius (m)		2 rope reevings		1 rope reevings		2 rope reevings		1 rope reevings		1 rope reevings		1 rope reevings			
15.4	25.00	15.7×13.00				17.9×18.00									
16.0	25.00	13.00		18.5×13.00		18.00		18.2×13.00							
18.0	25.00	13.00		13.00		18.00		13.00							
20.0	25.00	13.00		13.00		18.00		13.00		20.7×12.00					
22.0	23.55	13.00		13.00		17.55		13.00		22.4×10.60		11.85			
24.0	22.25	13.00		12.70		17.10		13.00		10.40		11.50			
26.0	21.05	13.00		12.25		16.60		13.00		10.05		11.15			
28.0	20.00	13.00		11.90		16.20		13.00		9.70		10.85			
30.0	19.10	13.00		11.55		15.80		13.00		9.40		10.60			
32.0	18.25	13.00		11.20		15.35		13.00		9.10		10.30			
34.0	17.45	13.00		10.90		14.65		13.00		8.85		10.05			
36.0	16.15	13.00		10.60		14.05		13.00		8.60		9.80			
38.0	14.85	13.00		10.35		13.45		13.00		8.35		9.60			
40.0	13.70	13.00		10.15		12.95		13.00		8.15		9.40			
42.0	12.70	12.85		9.90		12.50		12.55		7.95		9.20			
44.0	11.80	11.95		9.75		12.05		12.10		7.75		9.00			
46.0	10.95	11.10		9.55		11.35		11.50		7.60		8.85			
48.0	10.20	10.35		9.40		10.60		10.75		7.40		8.70			
50.0	9.55	9.65		9.25		9.90		10.05		7.30		8.55			
52.0	8.90	9.05		9.15		9.25		9.40		7.15		8.40			
54.0	8.35	8.45		8.55		8.65		8.80		7.05		8.30			
56.0	55.8×7.85		7.90		7.95		8.10		8.25		6.95		8.20		
58.0			56.5×7.85		7.65		7.75		6.85		8.05		5.55		
60.0					7.15		7.30		6.80		7.55		5.45		
62.0					61.6×6.85		61.8×6.90		6.75		7.10		5.40		
64.0									62.5×6.75		6.70		5.30		
66.0									6.30		5.30		4.15		
68.0									67.6×6.00		5.25		4.15		
70.0										68.5×5.25		4.10		4.00	
72.0										4.05		4.00		4.00	
74.0										73.4×4.05		4.00		4.00	
74.5										4.00		4.00		4.00	

- Notes: 1. The rated loads shown do not exceed 75% of tipping load with the machine on firm level ground, and are not less than 1.15 times over-front stability stipulated by the mobile crane construction standards.  
 2. The load to be actually lifted will be the rated load shown minus the weight of all lifting attachments such as a hook.  
 3. Working radius is the horizontal distance from the swing center to the center of gravity of a lifted load.  
 4. Jib offset angle is under the loaded condition.  
 5. Figures described as ○○×○○ in the tables indicate working radius (m) × rated load (ton).  
 6. The counterweight is 81.6 ton (Upper: 79.2 ton/ Lower: 2.4 ton).  
 7. Be sure to fully extend the side frames before operating the machine.

	Hook Capacity (ton)	Hook Weight (ton)
Main Hook	100	1.40
	60	1.20
	25	0.85
Aux. Hook	25	0.85
	13	0.50



# 75% Tipping Load

## Crane Ratings (Jib in 360° Working Area): With Mast (2)



Main Boom Length (m)		51											
Jib Boom Length (m)		13			19			25		31		37	
Offset Angle (°)		15		30	15		30	15	30	15	30	15	30
Working Radius (m)		2 rope reevings	1 rope reeving	1 rope reeving	2 rope reevings	1 rope reeving	1 rope reeving	1 rope reeving	1 rope reeving	1 rope reeving	1 rope reeving	1 rope reeving	1 rope reeving
15.9	25.00												
16.0	25.00	16.2×13.00											
18.0	25.00	13.00	19.0×13.00	18.4×18.00	18.7×13.00								
20.0	25.00	13.00	13.00	18.00	13.00			21.3×12.00					
22.0	24.10	13.00	13.00	17.75	13.00	22.9×10.60	11.95			23.8×6.90			
24.0	22.75	13.00	12.85	17.25	13.00	10.50	11.60			6.90			
26.0	21.60	13.00	12.45	16.80	13.00	10.15	11.25	26.8×8.40	6.70			26.3×4.00	
28.0	20.55	13.00	12.05	16.35	13.00	9.80	10.95	8.35	6.50			3.90	
30.0	19.60	13.00	11.70	16.00	13.00	9.50	10.70	8.05	6.30	30.6×5.10		3.75	
32.0	18.75	13.00	11.35	15.60	13.00	9.20	10.40	7.80	6.10	5.10		3.60	
34.0	17.35	13.00	11.05	15.05	13.00	8.95	10.20	7.55	5.90	5.00		3.50	34.5×2.70
36.0	15.90	13.00	10.80	14.40	13.00	8.70	9.95	7.30	5.75	4.90		3.35	2.70
38.0	14.65	13.00	10.55	13.85	13.00	8.45	9.70	7.10	5.60	4.80		3.25	2.65
40.0	13.50	13.00	10.30	13.30	13.00	8.25	9.50	6.90	5.45	4.70		3.15	2.55
42.0	12.45	12.65	10.10	12.85	12.90	8.05	9.35	6.70	5.30	4.60		3.05	2.50
44.0	11.55	11.70	9.90	11.95	12.15	7.85	9.15	6.55	5.20	4.50		2.95	2.45
46.0	10.75	10.90	9.70	11.10	11.30	7.70	9.00	6.40	5.05	4.45		2.85	2.40
48.0	10.00	10.15	9.55	10.35	10.55	7.55	8.80	6.25	4.95	4.40		2.75	2.35
50.0	9.30	9.45	9.40	9.65	9.80	7.40	8.65	6.10	4.85	4.30		2.70	2.30
52.0	8.65	8.80	8.95	9.00	9.15	7.25	8.55	5.95	4.75	4.25		2.60	2.25
54.0	8.10	8.20	8.35	8.45	8.60	7.15	8.40	5.85	4.65	4.20		2.55	2.20
56.0	7.55	7.70	7.75	7.90	8.05	7.05	8.30	5.75	4.55	4.15		2.50	
58.0	7.10	7.20	7.25	7.40	7.50	6.95	7.80	5.65	4.50	4.10		2.45	
60.0	58.4×7.00	58.6×7.05	59.1×7.00	6.95	7.05	6.85	7.35	5.55	4.40	4.05		2.35	
62.0				6.50	6.60	6.70	6.90	5.45	4.35	4.05		2.30	
64.0				6.10	6.20	6.30	6.45	5.40	4.30	4.00		2.25	
66.0				64.2×6.05	64.4×6.15	65.1×6.05	6.10	5.30	4.20	4.00		2.20	
68.0							5.70	5.30	4.15	4.00			
70.0							5.35	5.25	4.15	4.00			
72.0								70.2×5.30	71.1×5.25	4.10		4.00	
74.0										4.05		4.00	
76.0										4.05		4.00	
77.1										4.00			

Main Boom Length (m)		54											
Jib Boom Length (m)		13			19			25		31		37	
Offset Angle (°)		15		30	15		30	15	30	15	30	15	30
Working Radius (m)		2 rope reevings	1 rope reeving	1 rope reeving	2 rope reevings	1 rope reeving	1 rope reeving	1 rope reeving	1 rope reeving	1 rope reeving	1 rope reeving	1 rope reeving	1 rope reeving
16.4	25.00	16.7×13.00											
18.0	25.00	13.00	19.6×13.00	19.0×18.00	19.2×13.00								
20.0	25.00	13.00	13.00	18.00	13.00			21.8×12.00					
22.0	24.60	13.00	13.00	17.85	13.00	23.4×10.60	12.00						
24.0	23.30	13.00	13.00	17.40	13.00	10.60	11.70			24.3×6.90			
26.0	22.10	13.00	12.60	16.95	13.00	10.25	11.35	27.3×8.40	6.75			26.8×4.00	
28.0	21.05	13.00	12.20	16.55	13.00	9.90	11.10	8.40	6.55			3.90	
30.0	20.10	13.00	11.85	16.15	13.00	9.60	10.80	8.10	6.35	31.1×5.10		3.80	
32.0	18.85	13.00	11.55	15.80	13.00	9.35	10.55	7.85	6.15	5.10		3.65	
34.0	17.20	13.00	11.25	15.40	13.00	9.05	10.30	7.60	6.00	5.00		3.50	35.0×2.70
36.0	15.80	13.00	10.95	14.75	13.00	8.80	10.05	7.40	5.80	4.90		3.40	2.70
38.0	14.50	13.00	10.70	14.20	13.00	8.60	9.85	7.20	5.65	4.80		3.30	2.65
40.0	13.35	13.00	10.45	13.65	13.00	8.40	9.65	7.00	5.50	4.70		3.20	2.60
42.0	12.35	12.50	10.25	12.75	12.95	8.20	9.45	6.80	5.40	4.65		3.10	2.50
44.0	11.40	11.60	10.05	11.85	12.00	8.00	9.25	6.65	5.25	4.55		3.00	2.45
46.0	10.60	10.75	9.85	11.00	11.15	7.80	9.10	6.45	5.15	4.50		2.90	2.40
48.0	9.85	10.00	9.70	10.20	10.40	7.65	8.95	6.30	5.00	4.40		2.80	2.35
50.0	9.15	9.30	9.50	9.50	9.70	7.50	8.80	6.20	4.90	4.35		2.75	2.30
52.0	8.50	8.65	8.80	8.85	9.05	7.35	8.65	6.05	4.80	4.30		2.65	2.25
54.0	7.95	8.05	8.20	8.25	8.45	7.25	8.50	5.95	4.70	4.25		2.60	2.20
56.0	7.40	7.55	7.65	7.75	7.90	7.15	8.20	5.80	4.65	4.20		2.55	
58.0	6.90	7.05	7.10	7.20	7.35	7.05	7.65	5.70	4.55	4.15		2.45	
60.0	6.45	6.60	6.65	6.75	6.90	6.95	7.20	5.60	4.45	4.10		2.40	
62.0	61.0×6.25	61.2×6.30	61.7×6.25	6.35	6.45	6.60	6.75	5.55	4.40	4.05		2.35	
64.0				5.90	6.05	6.15	6.30	5.45	4.35	4.00		2.30	
66.0				5.50	5.60	5.75	5.95	5.40	4.25	4.00		2.25	
68.0				66.8×5.30	67.0×5.40	67.7×5.35	5.55	5.30	4.20	4.00		2.20	
70.0							5.15	5.30	4.15	3.95			
72.0							4.75	4.90	4.15	3.95			
74.0								72.8×4.60	73.7×4.55	4.10		3.95	
76.0										4.05		3.95	
78.0										4.00		3.95	
79.7										78.6×3.90		3.85	

※See notes on page 16.

# 75% Tipping Load



Unit: ton

## ■Crane Ratings (Jib in 360° Working Area): With Mast (3)

Main Boom Length (m)			57											
Jib Boom Length (m)			13		19		25		31		37			
Offset Angle (°)			15		30		15		30		15		30	
Working Radius (m)			2 rope reevings		1 rope reeving		2 rope reevings		1 rope reeving		2 rope reevings		1 rope reeving	
16.9	25.00	17.2×13.00												
18.0	25.00	13.00			19.5×18.00	19.8×13.00								
20.0	25.00	13.00	20.1×13.00		18.00	13.00								
22.0	25.00	13.00	13.00		18.00	13.00	23.9×10.60	22.3×12.00						
24.0	23.80	13.00	13.00		17.55	13.00	10.60	11.80			24.8×6.90			
26.0	22.60	13.00	12.70		17.10	13.00	10.35	11.45	27.8×8.40	6.80			27.4×4.00	
28.0	21.55	13.00	12.35		16.70	13.00	10.00	11.15	8.40	6.60			3.95	
30.0	20.50	13.00	12.00		16.30	13.00	9.70	10.90	8.20	6.40	31.7×5.10		3.80	
32.0	18.60	13.00	11.70		15.95	13.00	9.45	10.65	7.95	6.20	5.10		3.70	
34.0	16.95	13.00	11.40		15.60	13.00	9.20	10.40	7.70	6.05	5.05		3.55	35.5×2.70
36.0	15.50	13.00	11.10		15.10	13.00	8.95	10.15	7.50	5.90	4.95		3.45	2.70
38.0	14.20	13.00	10.85		14.50	13.00	8.70	9.95	7.25	5.75	4.85		3.30	2.65
40.0	13.10	13.00	10.60		13.55	13.00	8.50	9.75	7.05	5.60	4.75		3.20	2.60
42.0	12.05	12.25	10.40		12.50	12.70	8.30	9.55	6.90	5.45	4.65		3.10	2.55
44.0	11.15	11.30	10.20		11.55	11.75	8.10	9.35	6.70	5.30	4.60		3.05	2.45
46.0	10.30	10.50	10.00		10.70	10.90	7.95	9.20	6.55	5.20	4.50		2.95	2.40
48.0	9.55	9.70	9.80		9.95	10.15	7.75	9.05	6.40	5.10	4.45		2.85	2.35
50.0	8.85	9.00	9.20		9.25	9.40	7.60	8.90	6.25	5.00	4.35		2.80	2.30
52.0	8.20	8.35	8.55		8.60	8.75	7.50	8.75	6.15	4.90	4.30		2.70	2.25
54.0	7.65	7.80	7.95		8.00	8.15	7.35	8.50	6.00	4.80	4.25		2.65	2.20
56.0	7.10	7.25	7.40		7.55	7.70	7.25	7.95	5.90	4.70	4.20		2.55	
58.0	6.60	6.75	6.85		6.95	7.10	7.10	7.40	5.80	4.60	4.15		2.50	
60.0	6.10	6.25	6.35		6.45	6.60	6.80	6.90	5.70	4.55	4.10		2.45	
62.0	5.60	5.75	5.85		6.00	6.20	6.35	6.45	5.60	4.45	4.10		2.40	
64.0	63.6×5.25	63.8×5.30	5.35		5.55	5.70	5.90	6.05	5.50	4.40	4.05		2.35	
66.0			64.3×5.25		5.10	5.25	5.40	5.60	5.45	4.35	4.00		2.30	
68.0					4.70	4.85	4.95	5.20	5.40	4.25	4.00		2.25	
70.0					69.4×4.40	69.6×4.50	4.50	4.80	5.00	4.20	4.00		2.20	
72.0								70.3×4.45	4.40	4.60	4.15		3.95	
74.0									4.05	4.20	4.15		3.95	
76.0									75.4×3.80	3.80	4.00		3.95	
78.0										76.3×3.75	3.65		3.85	
80.0											3.35		3.50	
82.0											81.2×3.20		3.20	
82.3													3.15	

Main Boom Length (m)			60											
Jib Boom Length (m)			13		19		25		31		37			
Offset Angle (°)			15		30		15		30		15		30	
Working Radius (m)			2 rope reevings		1 rope reeving		2 rope reevings		1 rope reeving		2 rope reevings		1 rope reeving	
17.5	25.00	17.7×13.00												
18.0	25.00	13.00												
20.0	25.00	13.00	20.6×13.00		18.00	20.3×13.00								
22.0	25.00	13.00	13.00		18.00	13.00			22.8×12.00					
24.0	23.65	13.00	13.00		17.65	13.00	24.5×10.60	11.85		25.3×6.90				
26.0	22.05	13.00	12.85		17.25	13.00	10.45	11.55		6.85			27.9×4.00	
28.0	20.55	13.00	12.50		16.85	13.00	10.10	11.25	28.3×8.40	6.65			4.00	
30.0	19.25	13.00	12.15		16.45	13.00	9.80	11.00	8.25	6.45			3.85	
32.0	18.00	13.00	11.85		16.10	13.00	9.55	10.75	8.00	6.25	32.2×5.10		3.70	
34.0	16.70	13.00	11.55		15.75	13.00	9.30	10.50	7.75	6.10	5.05		3.60	
36.0	15.25	13.00	11.25		15.45	13.00	9.05	10.25	7.55	5.95	4.95		3.45	2.70
38.0	14.00	13.00	11.00		14.45	13.00	8.80	10.05	7.35	5.80	4.85		3.35	2.65
40.0	12.85	13.00	10.75		13.30	13.00	8.60	9.85	7.15	5.65	4.75		3.25	2.60
42.0	11.80	12.05	10.55		12.25	12.50	8.40	9.65	6.95	5.50	4.70		3.15	2.55
44.0	10.90	11.10	10.35		11.35	11.55	8.20	9.50	6.80	5.40	4.60		3.05	2.50
46.0	10.05	10.25	10.15		10.50	10.70	8.05	9.30	6.65	5.25	4.55		3.00	2.45
48.0	9.30	9.50	9.75		9.70	9.90	7.90	9.15	6.50	5.15	4.45		2.90	2.35
50.0	8.60	8.80	9.00		9.00	9.20	7.70	9.00	6.35	5.05	4.40		2.80	2.35
52.0	7.95	8.15	8.35		8.35	8.55	7.60	8.85	6.20	4.95	4.35		2.75	2.30
54.0	7.40	7.55	7.75		7.75	7.95	7.45	8.30	6.10	4.85	4.30		2.65	2.25
56.0	6.85	7.00	7.15		7.20	7.40	7.35	7.70	6.00	4.75	4.25		2.60	2.20
58.0	6.30	6.50	6.65		6.70	6.85	7.15	7.20	5.85	4.65	4.20		2.55	
60.0	5.75	5.95	6.10		6.20	6.40	6.60	6.70	5.75	4.60	4.15		2.50	
62.0	5.25	5.45	5.55		5.70	5.90	6.15	6.25	5.65	4.50	4.10		2.45	
64.0	4.80	4.95	5.05		5.20	5.40	5.65	5.80	5.60	4.45	4.05		2.35	
66.0	4.40	4.55	4.60		4.80	4.95	5.15	5.35	5.50	4.40	4.05		2.35	
68.0	66.2×4.35	66.4×4.45	66.9×4.40		4.35	4.55	4.70	4.90	5.20	4.30	4.00		2.30	
70.0					4.00	4.15	4.25	4.50	4.75	4.25	4.00		2.25	
72.0					3.65	3.75	3.85	4.10	4.35	4.20	3.95		2.20	
74.0						72.2×3.75	72.9×3.70	3.75	3.95	4.05	3.95		3.95	
76.0								3.40	3.55	3.70	3.95		3.95	
78.0								3.10	3.20	3.40	3.65		3.65	
80.0									78.9×3.05	3.10	3.30		3.30	
82.0										2.80	2.95		2.95	
84.0										83.8×2.55	2.65		2.65	
84.9											2.50		2.50	

※See notes on page 16.



# 75% Tipping Load

## ■ Crane Ratings (Jib in 360° Working Area): With Mast (5)



Unit: ton

Main Boom Length (m)		69													
Jib Boom Length (m)		13			19			25			31			37	
Offset Angle (°)		15		30	15		30	15		30	15		30		
Working Radius (m)		2 rope reevings	1 rope reeving	1 rope reeving	2 rope reevings	1 rope reeving	1 rope reeving	1 rope reeving	1 rope reeving	1 rope reeving	1 rope reeving	1 rope reeving	1 rope reeving	1 rope reeving	1 rope reeving
19.0		22.60	19.3×13.00												
20.0		21.65	13.00		21.6×18.00	21.8×13.00									
22.0		19.85	13.00	22.2×13.00	18.00	13.00									
24.0		18.30	13.00	13.00	18.00	13.00		24.4×12.00							
26.0		16.90	13.00	13.00	17.05	13.00	10.60	11.80		26.9×6.90					
28.0		15.65	13.00	12.85	15.80	13.00	10.35	11.50	29.9×8.40	6.80			29.4×3.95		
30.0		14.55	13.00	12.50	14.70	13.00	10.05	11.25	8.40	6.60			3.90		
32.0		13.50	13.00	12.20	13.65	13.00	9.80	11.00	8.20	6.40	33.7×5.10		3.80		
34.0		12.55	12.10	11.95	12.70	12.30	9.55	10.75	7.95	6.25	5.10		3.70		
36.0		11.65	11.30	11.65	11.85	11.50	9.30	10.55	7.75	6.10	5.00		3.55	37.6×2.70	
38.0		10.85	10.55	10.85	11.05	10.80	9.10	10.35	7.55	5.95	4.90		3.45	2.70	
40.0		10.10	9.85	10.15	10.30	10.10	8.90	10.15	7.35	5.80	4.85		3.35	2.65	
42.0		9.40	9.20	9.50	9.60	9.45	8.70	9.60	7.20	5.70	4.75		3.25	2.55	
44.0		8.75	8.60	8.85	9.00	8.85	8.50	9.00	7.05	5.55	4.70		3.15	2.50	
46.0		8.15	8.00	8.30	8.40	8.25	8.35	8.45	6.85	5.45	4.60		3.10	2.45	
48.0		7.55	7.50	7.75	7.80	7.75	8.10	7.95	6.70	5.35	4.55		3.00	2.40	
50.0		7.00	6.95	7.20	7.30	7.25	7.60	7.45	6.60	5.20	4.45		2.90	2.35	
52.0		6.50	6.50	6.70	6.75	6.75	7.10	6.95	6.45	5.10	4.40		2.85	2.30	
54.0		6.05	6.00	6.25	6.30	6.30	6.60	6.50	6.30	5.00	4.35		2.75	2.25	
56.0		5.60	5.60	5.80	5.85	5.85	6.20	6.10	6.20	4.95	4.30		2.70	2.25	
58.0		5.15	5.15	5.35	5.40	5.45	5.75	5.70	6.10	4.85	4.25		2.65	2.20	
60.0		4.75	4.80	4.95	5.00	5.05	5.35	5.30	5.70	4.75	4.20		2.60		
62.0		4.35	4.40	4.55	4.65	4.70	4.95	4.95	5.30	4.70	4.15		2.55		
64.0		4.00	4.05	4.20	4.25	4.35	4.60	4.60	4.95	4.60	4.10		2.45		
66.0		3.55	3.70	3.80	3.90	4.00	4.25	4.25	4.60	4.45	4.10		2.40		
68.0		3.15	3.35	3.45	3.60	3.70	3.90	3.95	4.25	4.15	4.05		2.35		
70.0		2.80	2.95	3.05	3.20	3.35	3.55	3.60	3.90	3.85	4.00		2.35		
72.0		2.45	2.60	2.70	2.80	3.00	3.25	3.35	3.60	3.55	3.90		2.30		
74.0		72.2×2.40	73.1×2.40	73.5×2.40	2.50	2.65	2.85	3.05	3.30	3.25	3.60		2.25		
76.0					74.5×2.40	75.6×2.40	2.50	2.70	2.95	3.00	3.30		2.20		
78.0							76.5×2.40	77.7×2.40	2.60	2.70	3.00				
80.0									79.1×2.40	2.35	2.70				
82.0										81.0×2.20	2.40				
83.1											2.20				

Main Boom Length (m)		72													
Jib Boom Length (m)		13			19			25			31			37	
Offset Angle (°)		15		30	15		30	15		30	15		30		
Working Radius (m)		2 rope reevings	1 rope reeving	1 rope reeving	2 rope reevings	1 rope reeving	1 rope reeving	1 rope reeving	1 rope reeving	1 rope reeving	1 rope reeving	1 rope reeving	1 rope reeving	1 rope reeving	1 rope reeving
19.5		19.60	19.8×13.00												
20.0		19.15	13.00												
22.0		17.50	13.00	22.7×13.00	22.1×17.55	22.4×13.00									
24.0		16.05	13.00	13.00	16.20	13.00		24.9×12.00							
26.0		14.75	13.00	13.00	14.90	13.00	26.5×10.60	11.85		27.4×6.85					
28.0		13.60	13.00	12.95	13.75	13.00	10.40	11.60		6.80					
30.0		12.55	12.10	12.45	12.70	12.30	10.15	11.30	30.4×8.40	6.65			3.95		
32.0		11.55	11.20	11.55	11.75	11.40	9.90	11.10	8.25	6.45			3.80		
34.0		10.70	10.40	10.75	10.90	10.60	9.65	10.75	8.00	6.30	34.3×5.10		3.70		
36.0		9.90	9.65	10.00	10.10	9.85	9.40	10.05	7.80	6.15	5.00		3.60		
38.0		9.15	8.95	9.25	9.35	9.15	9.20	9.35	7.60	6.00	4.95		3.50	38.1×2.70	
40.0		8.45	8.30	8.60	8.65	8.55	9.00	8.70	7.45	5.85	4.85		3.40	2.65	
42.0		7.80	7.70	8.00	8.00	7.95	8.35	8.10	7.25	5.75	4.75		3.30	2.60	
44.0		7.20	7.10	7.40	7.40	7.35	7.80	7.55	7.10	5.60	4.70		3.20	2.50	
46.0		6.60	6.60	6.85	6.85	6.85	7.25	7.05	6.95	5.50	4.65		3.10	2.45	
48.0		6.10	6.10	6.35	6.35	6.35	6.75	6.55	6.80	5.40	4.55		3.05	2.40	
50.0		5.60	5.60	5.85	5.85	5.90	6.25	6.10	6.60	5.25	4.50		2.95	2.35	
52.0		5.10	5.15	5.40	5.40	5.45	5.80	5.65	6.10	5.15	4.45		2.90	2.35	
54.0		4.70	4.75	4.95	4.95	5.00	5.35	5.25	5.70	5.05	4.40		2.80	2.30	
56.0		4.25	4.35	4.55	4.55	4.60	4.95	4.85	5.30	5.00	4.30		2.75	2.25	
58.0		3.85	3.95	4.15	4.15	4.25	4.55	4.45	4.90	4.65	4.25		2.70	2.20	
60.0		3.50	3.60	3.80	3.75	3.90	4.15	4.10	4.50	4.30	4.20		2.60		
62.0		3.15	3.25	3.40	3.40	3.55	3.80	3.80	4.15	3.95	4.20		2.55		
64.0		2.80	2.90	3.05	3.10	3.20	3.45	3.45	3.80	3.65	4.10		2.50		
66.0		2.45	2.60	2.75	2.75	2.90	3.15	3.15	3.50	3.35	3.80		2.45		
68.0		66.3×2.40	67.3×2.40	2.40	2.45	2.60	2.85	2.85	3.15	3.05	3.45		2.40		
70.0					68.3×2.40	69.3×2.40	2.50	2.55	2.85	2.75	3.15		2.35		
72.0							70.8×2.40	71.2×2.40	2.60	2.50	2.85		2.30		
74.0									73.3×2.40	2.25	2.60		2.25		
76.0										74.4×2.20	2.35		75.0×2.20		
77.0											2.20				

※See notes on page 16.

# 75% Tipping Load

## ■ Crane Ratings (Main Boom with Jib in 360° Working Area): Without Mast (1)



Main Boom Length (m)	45									
Jib Boom Length (m)	13		19		25		31		37	
Offset Angle (°)	15	30	15	30	15	30	15	30	15	30
Working Radius (m)										
9.7	66.10	66.20	65.45	65.50	65.25	64.75	64.60	63.90	63.85	62.95
10.0	64.90	65.00	64.25	64.30	64.05	63.55	63.40	62.70	62.70	61.80
12.0	57.95	58.10	57.30	57.45	57.10	56.70	56.45	55.90	55.75	55.00
14.0	52.40	52.50	51.75	51.90	51.55	51.20	50.90	50.40	50.20	49.55
16.0	45.85	45.95	45.10	45.25	44.90	44.45	44.20	43.55	43.40	42.55
18.0	38.80	38.95	38.15	38.30	37.90	37.55	37.25	36.70	36.45	35.80
20.0	33.40	33.55	32.75	32.95	32.55	32.25	31.90	31.45	31.15	30.60
22.0	29.15	29.30	28.50	28.70	28.35	28.05	27.70	27.30	27.00	26.50
24.0	25.70	25.90	25.10	25.30	24.90	24.65	24.25	23.95	23.60	23.20
26.0	22.85	23.05	22.25	22.50	22.05	21.90	21.45	21.20	20.80	20.45
28.0	20.45	20.65	19.90	20.15	19.70	19.55	19.10	18.90	18.45	18.20
30.0	18.45	18.65	17.90	18.10	17.70	17.55	17.10	16.95	16.45	16.25
32.0	16.70	16.90	16.15	16.40	15.95	15.85	15.40	15.25	14.75	14.60
34.0	15.20	15.40	14.70	14.90	14.45	14.40	13.90	13.80	13.30	13.15
36.0	13.90	14.10	13.40	13.60	13.15	13.10	12.60	12.55	12.05	11.95
38.0	12.75	12.95	12.25	12.50	12.00	12.00	11.50	11.45	10.80	10.75
40.0	11.55	11.70	10.95	11.20	10.65	10.60	10.00	10.00	9.35	9.30
40.6	11.10	11.30	10.55	10.75	10.20	10.20	9.60	9.55	8.90	8.90

Main Boom Length (m)	48									
Jib Boom Length (m)	13		19		25		31		37	
Offset Angle (°)	15	30	15	30	15	30	15	30	15	30
Working Radius (m)										
10.2	59.15	59.25	58.50	58.55	58.30	57.80	57.65	57.00	56.95	56.10
12.0	53.35	53.45	52.70	52.80	52.55	52.10	51.90	51.30	51.20	50.45
14.0	48.15	48.25	47.50	47.65	47.30	46.95	46.70	46.20	46.00	45.35
16.0	43.85	44.00	43.20	43.35	43.00	42.70	42.40	41.95	41.70	41.15
18.0	38.60	38.75	37.95	38.10	37.75	37.35	37.10	36.55	36.35	35.65
20.0	33.20	33.35	32.60	32.75	32.40	32.05	31.75	31.30	31.00	30.45
22.0	28.95	29.10	28.35	28.55	28.15	27.85	27.50	27.15	26.80	26.35
24.0	25.50	25.65	24.90	25.10	24.70	24.45	24.10	23.75	23.40	23.00
26.0	22.65	22.80	22.05	22.25	21.85	21.65	21.25	21.00	20.60	20.25
28.0	20.25	20.40	19.65	19.90	19.50	19.30	18.90	18.65	18.25	17.95
30.0	18.20	18.40	17.65	17.90	17.45	17.30	16.90	16.70	16.25	16.00
32.0	16.45	16.65	15.90	16.15	15.75	15.60	15.15	15.00	14.55	14.35
34.0	14.95	15.15	14.40	14.65	14.20	14.10	13.65	13.55	13.10	12.90
36.0	13.65	13.80	13.10	13.35	12.90	12.80	12.35	12.25	11.80	11.65
38.0	12.45	12.65	11.95	12.20	11.75	11.70	11.20	11.15	10.65	10.55
40.0	11.45	11.60	10.95	11.15	10.75	10.70	10.20	10.15	9.55	9.50
42.0	10.40	10.55	9.80	10.05	9.50	9.50	8.90	8.85	8.25	8.20
43.2	9.65	9.80	9.05	9.30	8.75	8.75	8.15	8.15	7.50	7.50

Main Boom Length (m)	51									
Jib Boom Length (m)	13		19		25		31		37	
Offset Angle (°)	15	30	15	30	15	30	15	30	15	30
Working Radius (m)										
10.8	53.10	53.20	52.45	52.55	52.30	51.80	51.65	51.00	50.95	50.10
12.0	49.55	49.65	48.90	49.00	48.75	48.30	48.10	47.50	47.40	46.65
14.0	44.55	44.70	43.95	44.10	43.75	43.40	43.15	42.65	42.50	41.80
16.0	40.50	40.65	39.85	40.05	39.70	39.35	39.10	38.60	38.40	37.80
18.0	37.05	37.20	36.45	36.65	36.25	35.95	35.65	35.25	35.00	34.45
20.0	33.00	33.15	32.35	32.55	32.20	31.85	31.55	31.05	30.85	30.25
22.0	28.70	28.90	28.10	28.30	27.95	27.65	27.30	26.90	26.65	26.10
24.0	25.25	25.45	24.65	24.85	24.50	24.25	23.90	23.55	23.25	22.80
26.0	22.40	22.60	21.80	22.05	21.65	21.45	21.05	20.75	20.40	20.05
28.0	20.00	20.20	19.45	19.65	19.25	19.10	18.70	18.45	18.05	17.75
30.0	17.95	18.15	17.40	17.65	17.25	17.10	16.70	16.45	16.05	15.80
32.0	16.20	16.40	15.65	15.90	15.50	15.35	14.95	14.75	14.35	14.10
34.0	14.70	14.90	14.15	14.40	14.00	13.85	13.45	13.30	12.85	12.65
36.0	13.35	13.55	12.85	13.10	12.65	12.55	12.15	12.00	11.55	11.40
38.0	12.20	12.40	11.70	11.95	11.50	11.45	11.00	10.90	10.40	10.30
40.0	11.15	11.35	10.65	10.90	10.45	10.40	9.95	9.90	9.40	9.25
42.0	10.25	10.45	9.75	10.00	9.55	9.50	9.05	9.00	8.35	8.25
44.0	9.35	9.50	8.75	9.00	8.50	8.45	7.90	7.85	7.25	7.20
45.8	8.30	8.50	7.75	8.00	7.45	7.45	6.90	6.85	6.25	6.25

Notes: 1. The rated loads shown do not exceed 75% of tipping load with the machine on firm level ground, and are not less than 1.15 times over-front stability stipulated by the mobile crane construction standards.

2. The load to be actually lifted will be the rated load shown minus the weight of all lifting attachments such as a hook.

Aux. Hook Capacity (ton)	Aux. Hook Weight (ton)
25 (2 rope reevings)	0.85
13 (1 rope reeving)	0.50

3. Working radius is the horizontal distance from the swing center to the center of gravity of a lifted load.

4. Jib offset angle is under the loaded condition.

5. Figures described as OO×OO in the tables indicate working radius (m) × rated load (ton).

6. The counterweight is 81.6 ton (Upper: 79.2 ton/ Lower: 2.4 ton).

7. Be sure to fully extend the side frames before operating the machine.

8. Correlation among the number of rope reevings maximum rated loads and hook weights are shown in the table below.

Hook Capacity (ton)	Hook Weight (ton)	Maximum Rated Load (ton)					
		6 Rope reevings	5 Rope reevings	4 Rope reevings	3 Rope reevings	2 Rope reevings	1 Rope reeving
100	1.40	66.2	62.5	50.0	—	—	—
60	1.20	—	60.0	50.0	37.5	25.0	—
25	0.85	—	—	—	—	25.0	—

# 75% Tipping Load



Unit: ton

## ■ Crane Ratings (Main Boom with Jib in 360° Working Area): Without Mast (2)

Main Boom Length (m)	54									
Jib Boom Length (m)	13		19		25		31		37	
Offset Angle (°)	15	30	15	30	15	30	15	30	15	30
Working Radius (m)	15	30	15	30	15	30	15	30	15	30
11.3	47.35	47.45	46.70	46.80	46.55	46.10	45.90	45.30	45.25	44.40
12.0	45.45	45.60	44.85	44.95	44.70	44.25	44.05	43.45	43.40	42.60
14.0	40.85	40.95	40.20	40.35	40.05	39.65	39.45	38.90	38.80	38.10
16.0	37.00	37.20	36.40	36.60	36.25	35.90	35.65	35.20	35.00	34.40
18.0	33.85	34.00	33.25	33.40	33.05	32.75	32.45	32.05	31.80	31.30
20.0	31.10	31.25	30.50	30.70	30.35	30.05	29.75	29.40	29.10	28.65
22.0	28.60	28.80	28.00	28.20	27.85	27.55	27.25	26.85	26.60	26.05
24.0	25.15	25.35	24.55	24.80	24.40	24.15	23.85	23.45	23.20	22.70
26.0	22.30	22.50	21.75	21.95	21.55	21.35	21.00	20.70	20.35	19.95
28.0	19.90	20.10	19.35	19.55	19.20	19.00	18.60	18.35	18.00	17.65
30.0	17.85	18.05	17.30	17.55	17.15	17.00	16.60	16.35	16.00	15.70
32.0	16.10	16.30	15.55	15.80	15.40	15.25	14.85	14.65	14.25	14.00
34.0	14.55	14.75	14.05	14.30	13.90	13.75	13.35	13.20	12.75	12.55
36.0	13.25	13.40	12.70	12.95	12.55	12.45	12.05	11.90	11.45	11.30
38.0	12.05	12.25	11.55	11.80	11.40	11.30	10.85	10.75	10.30	10.15
40.0	11.00	11.20	10.50	10.75	10.35	10.25	9.85	9.75	9.20	9.05
42.0	10.10	10.25	9.60	9.85	9.40	9.35	8.85	8.75	8.15	8.05
44.0	9.25	9.45	8.80	9.00	8.55	8.50	7.90	7.85	7.20	7.15
46.0	8.45	8.65	7.90	8.15	7.60	7.60	7.05	7.00	6.40	6.35
48.0	7.45	7.60	6.90	7.10	6.60	6.60	6.05	6.00	5.40	5.40
48.4	7.25	7.40	6.70	6.90	6.40	6.40	5.85	5.85	5.20	5.20

Main Boom Length (m)	57									
Jib Boom Length (m)	13		19		25		31		37	
Offset Angle (°)	15	30	15	30	15	30	15	30	15	30
Working Radius (m)	15	30	15	30	15	30	15	30	15	30
11.8	42.60	42.75	42.00	42.10	41.85	41.40	41.20	40.60	40.55	39.75
12.0	42.10	42.25	41.50	41.60	41.35	40.90	40.70	40.10	40.05	39.25
14.0	37.70	37.85	37.10	37.20	36.95	36.55	36.30	35.80	35.65	34.95
16.0	34.05	34.25	33.45	33.65	33.30	32.95	32.70	32.25	32.05	31.45
18.0	31.05	31.20	30.45	30.60	30.30	29.95	29.70	29.25	29.05	28.50
20.0	28.45	28.60	27.85	28.05	27.70	27.40	27.10	26.75	26.50	26.00
22.0	26.20	26.40	25.60	25.80	25.45	25.20	24.85	24.55	24.25	23.80
24.0	24.20	24.40	23.65	23.85	23.50	23.25	22.90	22.60	22.30	21.90
26.0	22.00	22.20	21.45	21.65	21.30	21.05	20.70	20.40	20.10	19.70
28.0	19.60	19.80	19.05	19.25	18.90	18.70	18.35	18.05	17.75	17.40
30.0	17.55	17.75	17.00	17.25	16.85	16.70	16.30	16.05	15.70	15.40
32.0	15.75	15.95	15.25	15.50	15.10	14.95	14.55	14.35	14.00	13.70
34.0	14.25	14.45	13.75	13.95	13.60	13.45	13.05	12.85	12.50	12.25
36.0	12.90	13.10	12.40	12.65	12.25	12.15	11.70	11.55	11.15	10.95
38.0	11.70	11.90	11.20	11.45	11.05	10.95	10.55	10.45	10.00	9.80
40.0	10.65	10.85	10.20	10.40	10.00	9.95	9.50	9.35	8.80	8.65
42.0	9.75	9.95	9.25	9.50	9.10	9.00	8.45	8.35	7.75	7.60
44.0	8.90	9.10	8.40	8.65	8.10	8.05	7.50	7.40	6.80	6.70
46.0	8.15	8.35	7.55	7.80	7.25	7.20	6.65	6.55	5.95	5.85
48.0	7.35	7.55	6.75	7.00	6.50	6.45	5.85	5.80	5.20	5.15
50.0	6.45	6.65	5.90	6.15	5.65	5.65	5.10	5.05	4.50	4.45
51.0	6.00	6.20	5.50	5.70	5.20	5.20	4.65	4.65	4.05	4.05

Main Boom Length (m)	60									
Jib Boom Length (m)	13		19		25		31		37	
Offset Angle (°)	15	30	15	30	15	30	15	30	15	30
Working Radius (m)	15	30	15	30	15	30	15	30	15	30
12.3	38.15	38.25	37.50	37.65	37.40	36.95	36.75	36.15	36.10	35.30
14.0	34.60	34.80	34.00	34.15	33.90	33.50	33.30	32.75	32.65	31.90
16.0	31.20	31.35	30.60	30.75	30.45	30.10	29.85	29.35	29.20	28.60
18.0	28.30	28.50	27.70	27.90	27.55	27.25	27.00	26.55	26.35	25.80
20.0	25.85	26.05	25.25	25.45	25.15	24.85	24.55	24.15	23.90	23.45
22.0	23.75	23.95	23.15	23.40	23.00	22.75	22.45	22.10	21.80	21.40
24.0	21.85	22.10	21.30	21.55	21.15	20.95	20.60	20.30	20.00	19.60
26.0	20.25	20.45	19.65	19.90	19.50	19.30	18.95	18.70	18.35	18.00
28.0	18.75	19.00	18.20	18.45	18.05	17.85	17.50	17.25	16.90	16.60
30.0	17.30	17.50	16.75	17.00	16.65	16.45	16.10	15.85	15.50	15.20
32.0	15.50	15.75	15.00	15.25	14.85	14.70	14.35	14.10	13.75	13.50
34.0	14.00	14.20	13.50	13.70	13.35	13.20	12.80	12.65	12.25	12.00
36.0	12.65	12.85	12.15	12.40	12.00	11.90	11.50	11.35	10.95	10.75
38.0	11.45	11.65	10.95	11.20	10.85	10.70	10.30	10.20	9.70	9.45
40.0	10.40	10.60	9.95	10.15	9.80	9.70	9.20	9.05	8.50	8.30
42.0	9.45	9.65	9.00	9.25	8.75	8.65	8.15	8.00	7.45	7.25
44.0	8.65	8.85	8.05	8.30	7.80	7.70	7.15	7.05	6.50	6.35
46.0	7.80	8.00	7.20	7.45	6.90	6.85	6.30	6.20	5.65	5.50
48.0	7.00	7.20	6.40	6.65	6.15	6.10	5.50	5.45	4.85	4.80
50.0	6.30	6.50	5.70	5.95	5.45	5.40	4.80	4.80	4.20	4.10
52.0	5.60	5.80	5.10	5.30	4.80	4.75	4.20	4.15	3.55	3.50
53.6	4.95	5.15	4.45	4.70	4.20	4.20	3.60	3.60	2.95	2.95

※See notes on page 21.

# 75% Tipping Load

## ■ Crane Ratings (Main Boom with Jib in 360° Working Area): Without Mast (3)



Unit: ton

Main Boom Length (m)	63									
Jib Boom Length (m)	13		19		25		31		37	
Offset Angle (°)	15	30	15	30	15	30	15	30	15	30
Working Radius (m)	15	30	15	30	15	30	15	30	15	30
12.9	33.45	33.60	32.85	32.95	32.70	32.30	32.10	31.55	31.50	30.70
14.0	31.40	31.55	30.80	30.95	30.70	30.30	30.10	29.55	29.45	28.75
16.0	28.20	28.40	27.60	27.80	27.50	27.15	26.90	26.45	26.30	25.65
18.0	25.55	25.75	24.95	25.15	24.85	24.50	24.25	23.85	23.65	23.10
20.0	23.25	23.45	22.70	22.90	22.55	22.30	22.00	21.60	21.40	20.90
22.0	21.30	21.50	20.75	20.95	20.60	20.35	20.05	19.70	19.45	19.00
24.0	19.60	19.80	19.00	19.25	18.90	18.65	18.35	18.00	17.75	17.35
26.0	18.05	18.25	17.50	17.75	17.35	17.15	16.80	16.55	16.20	15.85
28.0	16.70	16.90	16.15	16.40	16.00	15.80	15.45	15.20	14.85	14.55
30.0	15.45	15.70	14.90	15.15	14.80	14.60	14.25	14.00	13.65	13.35
32.0	14.35	14.55	13.80	14.05	13.65	13.50	13.10	12.90	12.55	12.30
34.0	13.35	13.55	12.80	13.05	12.65	12.50	12.10	11.95	11.55	11.30
36.0	12.40	12.60	11.85	12.10	11.70	11.60	11.15	11.00	10.60	10.40
38.0	11.25	11.50	10.80	11.05	10.65	10.55	10.15	9.95	9.45	9.20
40.0	10.20	10.40	9.75	10.00	9.60	9.45	8.95	8.75	8.25	8.05
42.0	9.25	9.45	8.70	9.00	8.50	8.40	7.85	7.70	7.20	7.00
44.0	8.35	8.60	7.75	8.00	7.50	7.40	6.90	6.75	6.20	6.05
46.0	7.45	7.70	6.85	7.15	6.65	6.55	6.00	5.90	5.35	5.20
48.0	6.65	6.90	6.10	6.35	5.85	5.75	5.20	5.15	4.55	4.45
50.0	5.95	6.15	5.35	5.60	5.10	5.05	4.50	4.45	3.85	3.80
52.0	5.30	5.50	4.70	4.95	4.45	4.40	3.85	3.80	3.20	3.15
54.0	4.70	4.90	4.15	4.40	3.85	3.85	3.25	3.25	2.65	2.60
56.0	4.10	4.25	3.55	3.80	3.30	3.30	2.70	2.70	55.1×2.20	55.0×2.20
56.2	4.00	4.20	3.45	3.75	3.20	3.20	2.60	2.60		

See notes on page 21.

# 75% Tipping Load

## Crane Ratings (Main Boom with Jib in 360° Working Area): With Mast (1)



Unit: ton

Main Boom Length (m)	45									
Jib Boom Length (m)	13		19		25		31		37	
Offset Angle (°)	15	30	15	30	15	30	15	30	15	30
Working Radius (m)	15	30	15	30	15	30	15	30	15	30
9.7	68.50	68.60	67.90	67.95	67.70	67.20	67.05	66.35	66.35	65.45
10.0	67.35	67.45	66.70	66.75	66.50	66.00	65.85	65.20	65.15	64.30
12.0	60.40	60.50	59.75	59.85	59.55	59.10	58.90	58.35	58.20	57.45
14.0	54.65	54.80	54.05	54.15	53.85	53.45	53.20	52.70	52.50	51.85
16.0	46.85	47.00	46.15	46.30	45.95	45.45	45.20	44.60	44.40	43.60
18.0	39.65	39.80	39.00	39.15	38.80	38.40	38.10	37.55	37.30	36.65
20.0	34.15	34.30	33.50	33.65	33.30	32.95	32.60	32.20	31.90	31.30
22.0	29.75	29.95	29.15	29.35	28.95	28.65	28.30	27.95	27.60	27.10
24.0	26.25	26.40	25.60	25.85	25.40	25.20	24.80	24.50	24.10	23.70
26.0	23.30	23.50	22.70	22.95	22.50	22.30	21.90	21.65	21.25	20.90
28.0	20.85	21.05	20.30	20.50	20.10	19.90	19.50	19.25	18.85	18.55
30.0	18.80	18.95	18.20	18.45	18.00	17.90	17.45	17.25	16.80	16.60
32.0	17.00	17.15	16.45	16.70	16.25	16.15	15.65	15.50	15.05	14.85
34.0	15.45	15.60	14.90	15.15	14.70	14.60	14.15	14.05	13.55	13.40
36.0	14.10	14.25	13.55	13.80	13.35	13.30	12.80	12.70	12.20	12.10
38.0	12.90	13.10	12.40	12.65	12.15	12.15	11.65	11.60	11.05	11.00
40.0	11.90	12.05	11.40	11.60	11.15	11.10	10.60	10.60	10.05	10.00
40.6	11.60	11.75	11.10	11.30	10.85	10.85	10.35	10.30	9.75	9.75

Main Boom Length (m)	48									
Jib Boom Length (m)	13		19		25		31		37	
Offset Angle (°)	15	30	15	30	15	30	15	30	15	30
Working Radius (m)	15	30	15	30	15	30	15	30	15	30
10.2	61.55	61.65	60.90	61.00	60.75	60.25	60.10	59.45	59.40	58.55
12.0	55.75	55.90	55.15	55.25	54.95	54.55	54.30	53.75	53.65	52.90
14.0	50.45	50.60	49.85	49.95	49.65	49.25	49.00	48.50	48.35	47.70
16.0	45.95	46.10	45.35	45.50	45.15	44.85	44.55	44.10	43.90	43.30
18.0	39.50	39.65	38.85	39.00	38.65	38.25	38.00	37.45	37.25	36.55
20.0	33.95	34.15	33.35	33.50	33.15	32.80	32.50	32.05	31.80	31.20
22.0	29.60	29.75	29.00	29.20	28.80	28.50	28.15	27.80	27.45	27.00
24.0	26.05	26.25	25.45	25.65	25.25	25.05	24.65	24.35	24.00	23.55
26.0	23.10	23.30	22.55	22.75	22.35	22.15	21.75	21.50	21.10	20.75
28.0	20.65	20.85	20.10	20.30	19.90	19.75	19.30	19.10	18.70	18.40
30.0	18.55	18.75	18.00	18.25	17.80	17.70	17.25	17.05	16.65	16.40
32.0	16.75	16.95	16.25	16.45	16.05	15.90	15.50	15.30	14.85	14.65
34.0	15.20	15.40	14.70	14.90	14.50	14.40	13.95	13.80	13.35	13.20
36.0	13.85	14.05	13.35	13.55	13.15	13.05	12.60	12.50	12.00	11.90
38.0	12.65	12.85	12.15	12.35	11.95	11.85	11.40	11.35	10.85	10.75
40.0	11.60	11.75	11.10	11.30	10.90	10.85	10.35	10.30	9.80	9.75
42.0	10.65	10.80	10.15	10.40	9.95	9.90	9.45	9.40	8.80	8.75
43.2	10.15	10.30	9.65	9.90	9.45	9.40	8.95	8.90	8.25	8.20

Main Boom Length (m)	51									
Jib Boom Length (m)	13		19		25		31		37	
Offset Angle (°)	15	30	15	30	15	30	15	30	15	30
Working Radius (m)	15	30	15	30	15	30	15	30	15	30
10.8	55.50	55.60	54.85	54.95	54.70	54.25	54.05	53.45	53.40	52.55
12.0	51.95	52.10	51.35	51.45	51.15	50.75	50.55	49.95	49.85	49.10
14.0	46.90	47.05	46.30	46.45	46.10	45.75	45.50	45.00	44.85	44.20
16.0	42.70	42.85	42.05	42.25	41.90	41.55	41.30	40.85	40.65	40.05
18.0	39.05	39.25	38.45	38.65	38.30	38.00	37.70	37.25	37.05	36.35
20.0	33.75	33.95	33.15	33.30	32.95	32.65	32.35	31.85	31.65	31.00
22.0	29.40	29.55	28.80	29.00	28.60	28.30	28.00	27.60	27.30	26.80
24.0	25.85	26.00	25.25	25.45	25.10	24.85	24.50	24.15	23.80	23.40
26.0	22.90	23.10	22.35	22.55	22.15	21.95	21.55	21.30	20.95	20.55
28.0	20.45	20.65	19.90	20.10	19.70	19.55	19.15	18.90	18.50	18.20
30.0	18.35	18.55	17.80	18.05	17.65	17.45	17.05	16.85	16.45	16.20
32.0	16.55	16.75	16.00	16.25	15.85	15.70	15.30	15.10	14.70	14.45
34.0	15.00	15.15	14.45	14.70	14.30	14.15	13.75	13.60	13.15	12.95
36.0	13.60	13.80	13.10	13.35	12.90	12.80	12.40	12.25	11.80	11.65
38.0	12.40	12.60	11.90	12.15	11.70	11.65	11.20	11.10	10.65	10.50
40.0	11.35	11.55	10.85	11.10	10.65	10.60	10.15	10.05	9.60	9.45
42.0	10.40	10.55	9.90	10.15	9.70	9.65	9.20	9.15	8.50	8.45
44.0	9.55	9.70	9.10	9.30	8.85	8.85	8.25	8.20	7.55	7.50
45.8	8.90	9.05	8.40	8.60	8.10	8.10	7.50	7.45	6.80	6.80

Notes: 1. The rated loads shown do not exceed 75% of tipping load with the machine on firm level ground, and are not less than 1.15 times over-front stability stipulated by the mobile crane construction standards.

2. The load to be actually lifted will be the rated load shown minus the weight of all lifting attachments such as a hook.

Aux. Hook Capacity (ton)	Aux. Hook Weight (ton)
25 (2 rope reevings)	0.85
13 (1 rope reeving)	0.50

3. Working radius is the horizontal distance from the swing center to the center of gravity of a lifted load.

4. Jib offset angle is under the loaded condition.

5. Figures described as ○○×○○ in the tables indicate working radius (m) × rated load (ton).

6. The counterweight is 81.6 ton (Upper: 79.2 ton/ Lower: 2.4 ton).

7. Be sure to fully extend the side frames before operating the machine.

8. Correlation among the number of rope reevings maximum rated loads and hook weights are shown in the table below.

Hook Capacity (ton)	Hook Weight (ton)	Maximum Rated Load (ton)					
		6 Rope reevings	5 Rope reevings	4 Rope reevings	3 Rope reevings	2 Rope reevings	1 Rope reeving
100	1.40	68.6	62.5	50.0	—	—	—
60	1.20	—	60.0	50.0	37.5	25.0	—
25	0.85	—	—	—	—	25.0	—



# 75% Tipping Load

## ■ Crane Ratings (Main Boom with Jib in 360° Working Area): With Mast (2)



Unit: ton

Main Boom Length (m)	54									
Jib Boom Length (m)	13		19		25		31		37	
Offset Angle (°)	15	30	15	30	15	30	15	30	15	30
Working Radius (m)	15	30	15	30	15	30	15	30	15	30
11.3	49.65	49.75	49.05	49.15	48.85	48.40	48.25	47.65	47.60	46.80
12.0	47.80	47.90	47.20	47.30	47.00	46.60	46.40	45.80	45.75	45.00
14.0	43.10	43.25	42.50	42.65	42.35	41.95	41.75	41.25	41.10	40.45
16.0	39.20	39.35	38.60	38.75	38.45	38.10	37.85	37.40	37.20	36.60
18.0	35.85	36.00	35.25	35.45	35.10	34.80	34.50	34.10	33.85	33.35
20.0	32.95	33.10	32.35	32.55	32.20	31.90	31.60	31.25	30.95	30.50
22.0	29.35	29.50	28.75	28.90	28.55	28.25	27.95	27.55	27.30	26.75
24.0	25.75	25.95	25.20	25.40	25.05	24.75	24.45	24.10	23.80	23.35
26.0	22.85	23.00	22.25	22.50	22.10	21.90	21.55	21.25	20.90	20.50
28.0	20.35	20.55	19.80	20.05	19.65	19.45	19.10	18.80	18.45	18.15
30.0	18.25	18.45	17.70	17.95	17.55	17.40	17.00	16.80	16.40	16.10
32.0	16.45	16.65	15.90	16.15	15.75	15.60	15.20	15.05	14.65	14.40
34.0	14.90	15.10	14.35	14.60	14.20	14.05	13.65	13.50	13.10	12.90
36.0	13.50	13.70	13.00	13.25	12.85	12.70	12.30	12.15	11.75	11.55
38.0	12.30	12.50	11.80	12.05	11.60	11.55	11.10	11.00	10.55	10.40
40.0	11.20	11.40	10.75	10.95	10.55	10.45	10.05	9.95	9.45	9.30
42.0	10.25	10.45	9.80	10.00	9.60	9.55	9.05	9.00	8.35	8.25
44.0	9.40	9.60	8.95	9.15	8.75	8.65	8.10	8.00	7.40	7.30
46.0	8.65	8.80	8.15	8.40	7.85	7.80	7.20	7.15	6.55	6.45
48.0	7.95	8.10	7.35	7.60	7.05	7.00	6.40	6.40	5.75	5.70
48.4	7.80	7.95	7.20	7.45	6.90	6.85	6.25	6.25	5.60	5.60

Main Boom Length (m)	57									
Jib Boom Length (m)	13		19		25		31		37	
Offset Angle (°)	15	30	15	30	15	30	15	30	15	30
Working Radius (m)	15	30	15	30	15	30	15	30	15	30
11.8	44.90	45.05	44.30	44.40	44.15	43.70	43.55	42.95	42.90	42.10
12.0	44.40	44.55	43.80	43.90	43.65	43.20	43.05	42.45	42.40	41.60
14.0	39.95	40.10	39.35	39.50	39.20	38.85	38.60	38.10	38.00	37.30
16.0	36.25	36.40	35.65	35.80	35.50	35.15	34.90	34.45	34.30	33.70
18.0	33.05	33.25	32.50	32.65	32.35	32.05	31.75	31.35	31.10	30.60
20.0	30.30	30.50	29.75	29.95	29.60	29.30	29.00	28.65	28.40	27.90
22.0	27.90	28.10	27.30	27.55	27.15	26.95	26.60	26.25	26.00	25.55
24.0	25.50	25.70	24.90	25.15	24.80	24.50	24.20	23.85	23.55	23.10
26.0	22.55	22.75	22.00	22.20	21.85	21.60	21.30	20.95	20.65	20.25
28.0	20.10	20.30	19.55	19.75	19.40	19.20	18.85	18.55	18.25	17.85
30.0	17.95	18.15	17.45	17.65	17.30	17.10	16.75	16.50	16.15	15.85
32.0	16.15	16.35	15.65	15.85	15.50	15.35	14.95	14.75	14.40	14.10
34.0	14.60	14.80	14.05	14.30	13.90	13.80	13.40	13.20	12.85	12.60
36.0	13.20	13.40	12.70	12.95	12.55	12.45	12.05	11.85	11.45	11.25
38.0	12.00	12.20	11.50	11.75	11.35	11.25	10.80	10.70	10.25	10.10
40.0	10.90	11.10	10.40	10.65	10.25	10.15	9.75	9.65	9.10	8.90
42.0	9.95	10.15	9.45	9.70	9.30	9.20	8.70	8.60	8.00	7.85
44.0	9.10	9.25	8.60	8.85	8.35	8.25	7.70	7.60	7.00	6.90
46.0	8.30	8.50	7.70	7.95	7.45	7.35	6.80	6.75	6.15	6.05
48.0	7.50	7.70	6.90	7.15	6.60	6.60	6.00	5.95	5.35	5.30
50.0	6.75	6.95	6.20	6.45	5.90	5.85	5.25	5.25	4.60	4.60
51.0	6.40	6.60	5.85	6.10	5.55	5.55	4.95	4.95	4.30	4.30

Main Boom Length (m)	60									
Jib Boom Length (m)	13		19		25		31		37	
Offset Angle (°)	15	30	15	30	15	30	15	30	15	30
Working Radius (m)	15	30	15	30	15	30	15	30	15	30
12.3	40.40	40.50	39.75	39.90	39.65	39.20	39.05	38.45	38.40	37.60
14.0	36.85	37.00	36.25	36.40	36.10	35.75	35.55	35.00	34.90	34.20
16.0	33.35	33.50	32.75	32.90	32.60	32.25	32.05	31.55	31.40	30.80
18.0	30.35	30.50	29.75	29.95	29.60	29.30	29.05	28.60	28.40	27.90
20.0	27.75	27.95	27.15	27.35	27.05	26.75	26.45	26.10	25.85	25.35
22.0	25.45	25.65	24.90	25.10	24.75	24.50	24.20	23.85	23.60	23.15
24.0	23.45	23.65	22.90	23.10	22.75	22.50	22.15	21.90	21.55	21.20
26.0	21.65	21.85	21.10	21.30	20.95	20.75	20.35	20.10	19.75	19.45
28.0	19.85	20.05	19.30	19.55	19.20	18.95	18.65	18.35	18.05	17.65
30.0	17.75	17.95	17.20	17.45	17.10	16.90	16.55	16.30	15.95	15.65
32.0	15.95	16.15	15.40	15.65	15.30	15.10	14.75	14.55	14.20	13.90
34.0	14.35	14.55	13.85	14.10	13.70	13.55	13.20	13.00	12.65	12.40
36.0	12.95	13.20	12.45	12.70	12.35	12.20	11.80	11.65	11.25	11.05
38.0	11.75	11.95	11.25	11.50	11.10	11.00	10.60	10.45	10.05	9.85
40.0	10.65	10.85	10.20	10.40	10.05	9.95	9.50	9.35	8.85	8.60
42.0	9.70	9.90	9.20	9.45	9.05	8.95	8.40	8.25	7.70	7.55
44.0	8.85	9.00	8.30	8.55	8.05	7.95	7.40	7.30	6.75	6.60
46.0	8.00	8.20	7.40	7.65	7.15	7.05	6.50	6.40	5.85	5.75
48.0	7.15	7.35	6.60	6.85	6.30	6.25	5.70	5.65	5.05	4.95
50.0	6.40	6.60	5.85	6.10	5.55	5.55	4.95	4.90	4.30	4.25
52.0	5.75	5.95	5.20	5.45	4.90	4.85	4.30	4.25	3.65	3.65
53.6	5.25	5.45	4.70	4.95	4.40	4.40	3.80	3.80	3.20	3.20

※See notes on page 24.

# 75% Tipping Load

## ■ Crane Ratings (Main Boom with Jib in 360° Working Area): With Mast (3)



Unit: ton

Main Boom Length (m)	63									
Jib Boom Length (m)	13		19		25		31		37	
Offset Angle (°)	15	30	15	30	15	30	15	30	15	30
Working Radius (m)	15	30	15	30	15	30	15	30	15	30
12.9	35.60	35.70	35.00	35.10	34.85	34.45	34.30	33.70	33.65	32.90
14.0	33.55	33.70	32.95	33.10	32.80	32.45	32.25	31.70	31.60	30.95
16.0	30.30	30.45	29.70	29.90	29.60	29.25	29.00	28.55	28.40	27.80
18.0	27.50	27.70	26.95	27.15	26.80	26.50	26.25	25.85	25.65	25.10
20.0	25.10	25.30	24.55	24.75	24.45	24.15	23.85	23.50	23.25	22.80
22.0	23.00	23.20	22.45	22.65	22.30	22.10	21.75	21.45	21.15	20.75
24.0	21.15	21.35	20.60	20.80	20.45	20.25	19.90	19.60	19.30	18.90
26.0	19.45	19.70	18.90	19.15	18.80	18.60	18.25	17.95	17.65	17.30
28.0	17.95	18.20	17.40	17.65	17.30	17.10	16.75	16.50	16.15	15.85
30.0	16.60	16.80	16.05	16.30	15.90	15.75	15.40	15.15	14.80	14.50
32.0	15.35	15.60	14.80	15.05	14.65	14.55	14.15	13.95	13.55	13.30
34.0	14.20	14.40	13.65	13.95	13.55	13.40	13.00	12.80	12.40	12.20
36.0	12.80	13.00	12.30	12.55	12.20	12.05	11.70	11.50	11.15	10.90
38.0	11.60	11.80	11.10	11.35	10.95	10.85	10.45	10.30	9.85	9.60
40.0	10.50	10.70	10.00	10.25	9.85	9.75	9.30	9.10	8.60	8.40
42.0	9.50	9.70	9.05	9.30	8.80	8.70	8.15	8.00	7.50	7.30
44.0	8.60	8.85	8.00	8.30	7.80	7.70	7.15	7.05	6.50	6.35
46.0	7.70	7.90	7.10	7.40	6.85	6.80	6.25	6.15	5.60	5.45
48.0	6.85	7.10	6.30	6.55	6.05	5.95	5.45	5.35	4.75	4.65
50.0	6.10	6.30	5.55	5.80	5.30	5.20	4.70	4.60	4.05	3.95
52.0	5.40	5.65	4.85	5.10	4.60	4.55	4.00	3.95	3.35	3.30
54.0	4.80	5.00	4.25	4.50	3.95	3.95	3.40	3.35	2.75	2.70
56.0	4.25	4.40	3.70	3.90	3.40	3.40	2.80	2.80	55.6×2.30	55.5×2.30
56.2	4.20	4.35	3.65	3.85	3.35	3.35	2.75	2.75		

Main Boom Length (m)	66									
Jib Boom Length (m)	13		19		25		31		37	
Offset Angle (°)	15	30	15	30	15	30	15	30	15	30
Working Radius (m)	15	30	15	30	15	30	15	30	15	30
13.4	32.40	32.55	31.80	31.95	31.70	31.25	31.10	30.55	30.50	29.75
14.0	31.35	31.50	30.75	30.90	30.65	30.25	30.05	29.55	29.45	28.75
16.0	28.20	28.40	27.65	27.80	27.55	27.20	26.95	26.50	26.35	25.75
18.0	25.55	25.75	25.00	25.20	24.90	24.55	24.35	23.90	23.70	23.15
20.0	23.25	23.45	22.70	22.90	22.60	22.30	22.05	21.65	21.45	20.95
22.0	21.25	21.45	20.70	20.95	20.60	20.35	20.05	19.70	19.45	19.00
24.0	19.50	19.70	18.90	19.15	18.80	18.60	18.25	17.95	17.70	17.25
26.0	17.90	18.10	17.35	17.60	17.20	17.00	16.65	16.40	16.10	15.75
28.0	16.45	16.65	15.90	16.15	15.80	15.60	15.25	15.00	14.65	14.35
30.0	15.15	15.40	14.60	14.85	14.50	14.30	13.95	13.70	13.35	13.10
32.0	13.95	14.20	13.40	13.70	13.30	13.15	12.75	12.55	12.20	11.95
34.0	12.90	13.10	12.35	12.60	12.20	12.05	11.70	11.50	11.10	10.90
36.0	11.90	12.10	11.35	11.60	11.20	11.10	10.70	10.50	10.10	9.90
38.0	10.95	11.20	10.40	10.70	10.30	10.20	9.75	9.60	9.20	9.00
40.0	10.10	10.35	9.55	9.85	9.45	9.35	8.90	8.80	8.35	8.10
42.0	9.30	9.50	8.75	9.00	8.50	8.40	7.90	7.75	7.25	7.00
44.0	8.30	8.55	7.70	8.00	7.50	7.40	6.90	6.75	6.20	6.05
46.0	7.40	7.65	6.80	7.10	6.60	6.50	5.95	5.85	5.30	5.15
48.0	6.55	6.80	5.95	6.25	5.75	5.65	5.15	5.05	4.50	4.35
50.0	5.80	6.00	5.20	5.50	5.00	4.90	4.40	4.30	3.75	3.65
52.0	5.10	5.30	4.55	4.80	4.30	4.25	3.70	3.65	3.05	3.00
54.0	4.45	4.70	3.90	4.15	3.65	3.60	3.10	3.05	2.45	2.40
56.0	3.90	4.10	3.35	3.60	3.10	3.05	2.50	2.50	54.5×2.30	54.3×2.30
58.0	3.35	3.55	2.85	3.05	2.55	2.55	56.7×2.30	56.7×2.30		
58.8	3.15	3.35	2.65	2.85	2.35	2.35				

# 75% Tipping Load

## ■ Crane Ratings (Main Boom with Jib in 360° Working Area): With Mast (4)



Unit: ton

Main Boom Length (m)	69									
Jib Boom Length (m)	13		19		25		31		37	
Offset Angle (°)	15	30	15	30	15	30	15	30	15	30
Working Radius (m)										
13.9	28.85	29.00	28.25	28.40	28.15	27.75	27.55	27.00	26.95	26.25
14.0	28.65	28.85	28.10	28.25	28.00	27.60	27.40	26.85	26.80	26.10
16.0	25.75	25.90	25.15	25.35	25.05	24.70	24.50	24.00	23.90	23.25
18.0	23.25	23.45	22.65	22.85	22.55	22.25	22.00	21.60	21.40	20.85
20.0	21.05	21.30	20.50	20.75	20.40	20.15	19.85	19.50	19.25	18.75
22.0	19.20	19.40	18.65	18.85	18.55	18.25	18.00	17.65	17.40	16.95
24.0	17.50	17.75	16.95	17.20	16.85	16.65	16.30	16.00	15.75	15.35
26.0	16.00	16.25	15.45	15.75	15.35	15.15	14.85	14.55	14.25	13.90
28.0	14.70	14.90	14.15	14.40	14.05	13.85	13.50	13.25	12.90	12.60
30.0	13.45	13.70	12.90	13.20	12.80	12.65	12.30	12.05	11.70	11.40
32.0	12.35	12.60	11.80	12.10	11.70	11.55	11.20	10.95	10.60	10.35
34.0	11.35	11.60	10.80	11.10	10.70	10.55	10.15	9.95	9.60	9.35
36.0	10.40	10.65	9.85	10.15	9.75	9.65	9.25	9.05	8.70	8.45
38.0	9.55	9.80	9.00	9.30	8.90	8.80	8.35	8.20	7.80	7.60
40.0	8.75	9.00	8.20	8.50	8.10	8.00	7.60	7.45	7.05	6.85
42.0	8.00	8.25	7.50	7.75	7.35	7.25	6.85	6.70	6.30	6.15
44.0	7.30	7.55	6.80	7.10	6.65	6.60	6.15	6.05	5.60	5.45
46.0	6.65	6.90	6.15	6.45	6.00	5.95	5.50	5.40	4.95	4.85
48.0	6.05	6.30	5.55	5.85	5.40	5.35	4.90	4.80	4.35	4.25
50.0	5.50	5.70	5.00	5.25	4.85	4.80	4.30	4.20	3.65	3.55
52.0	4.95	5.20	4.40	4.70	4.20	4.10	3.60	3.50	2.95	2.85
54.0	4.35	4.55	3.75	4.05	3.55	3.50	2.95	2.90	2.35	53.8×2.30
56.0	3.75	3.95	3.20	3.45	2.95	2.90	2.40	2.35	54.1×2.30	
58.0	3.20	3.45	2.70	2.95	2.40	2.40	56.3×2.30	56.2×2.30		
60.0	2.75	2.95	58.2×2.65	2.45	58.4×2.30	58.4×2.30				
61.4	60.4×2.65	2.60		60.5×2.30						

Main Boom Length (m)	72									
Jib Boom Length (m)	13		19		25		31		37	
Offset Angle (°)	15	30	15	30	15	30	15	30	15	30
Working Radius (m)										
14.4	24.85	25.05	24.30	24.45	24.20	23.80	23.65	23.10	23.00	22.30
16.0	22.70	22.90	22.15	22.35	22.05	21.70	21.50	21.00	20.90	20.25
18.0	20.40	20.60	19.85	20.05	19.75	19.45	19.20	18.75	18.60	18.05
20.0	18.40	18.60	17.85	18.05	17.75	17.45	17.20	16.80	16.65	16.10
22.0	16.65	16.90	16.10	16.35	16.00	15.75	15.45	15.10	14.90	14.45
24.0	15.10	15.35	14.55	14.80	14.45	14.25	13.95	13.60	13.35	12.95
26.0	13.70	13.95	13.20	13.45	13.10	12.85	12.55	12.25	12.00	11.60
28.0	12.50	12.70	11.95	12.20	11.85	11.65	11.30	11.05	10.75	10.40
30.0	11.35	11.60	10.80	11.10	10.75	10.55	10.20	9.95	9.65	9.35
32.0	10.35	10.60	9.80	10.10	9.70	9.55	9.20	8.95	8.65	8.35
34.0	9.40	9.65	8.85	9.15	8.75	8.60	8.25	8.05	7.70	7.45
36.0	8.55	8.80	8.00	8.30	7.90	7.80	7.40	7.20	6.85	6.60
38.0	7.75	8.00	7.25	7.50	7.10	7.00	6.60	6.45	6.05	5.85
40.0	7.00	7.25	6.50	6.80	6.40	6.30	5.85	5.75	5.35	5.15
42.0	6.35	6.60	5.80	6.10	5.70	5.60	5.20	5.05	4.65	4.50
44.0	5.70	5.95	5.20	5.50	5.05	5.00	4.55	4.45	4.00	3.85
46.0	5.10	5.35	4.60	4.90	4.50	4.40	3.95	3.85	3.45	3.30
48.0	4.55	4.80	4.05	4.35	3.90	3.85	3.40	3.35	2.90	2.75
50.0	4.05	4.30	3.55	3.85	3.40	3.35	2.90	2.85	2.35	2.30
52.0	3.55	3.80	3.05	3.35	2.90	2.85	2.40	2.35	50.2×2.30	
54.0	3.10	3.30	53.7×2.65	2.90	2.45	2.40	52.4×2.30	52.2×2.30		
56.0	2.70	2.90		2.45	54.6×2.30	54.5×2.30				
58.0	56.2×2.65	2.45		56.7×2.30						
58.8		2.30								

※See notes on page 24.

## ■ Crane Boom Construction

Elements	Boom Length (m)																									
	18	21	24	27	30	33	36	39	42	45	48	51	54	57	60	63	66	69	72	75	78	81	84	87	90	
Lower boom (7.5 m)																										
Upper boom (10.5 m)	1	1	1	1	1	1	1	1	1	1	1	1	1	1	1	1	1	1	1	1	1	1	1	1	1	1
Types of boom inserts	I	II	I	II	I	II	I	II	I	II	I	II	I	II	I	II	I	II	I	II	I	II	I	II	I	II
Boom insert 3 m (B)		1	1	1	1	1	1	1	1	1	1	1	1	1	1	1	1	1	1	1	1	1	1	1	1	1
Boom insert 3 m (A)	1	2	1	1	2	1	1	1	2	2	1	1	1	2	1	1	1	2	1	1	2	1	2	1	2	2
Boom insert 6 m				1	1	1	1	2	2	1	1	1	2	1	1	1	2	2	1	1	1	1	1	1	2	2
Boom insert 9 m (B)																										
Boom insert 9 m (A)																										
Boom insert 12 m																										
Boom mast required																										
Boom mast available																										
Boom (Jib available)																										
Boom (aux. available)																										
Boom (Intermediate suspension parts required)																										

### Types of Boom Inserts

I :For crane boom

II :For crane transformed from tower crane

Note: When crane is transformed from tower crane by using tower boom of 69 m or longer, the following boom inserts are required.

●69-78 m boom = 12 m × 1

●Boom of 81 m or longer = 12 m × 2

## ■ Crane Jib Construction

Elements	Jib Length (m)				
	13	19	25	31	37
Lower jib (5 m)	1	1	1	1	1
Upper jib (5 m)	1	1	1	1	1
Jib insert 3 m	1	1	1	1	1
Jib insert 6 m		1	2	3	4

## ■ Component weights and Dimensions for Transport

Components	Weight (ton)	Q'ty	Length × Width × Height (m)	Remarks	
Basic machine	Basic machine	33.90	1	7.12 × 3.40 × 3.15	Excluding ropes, gantry (H and L), track beam, and self-loading device
	Basic machine	41.70	1	8.84 × 3.40 × 3.46	Including ropes, gantry (H and L), and bridle Excluding track beam and self-loading device
	Track beam	5.70	2	6.00 × 0.55 × 0.68	
	Side frame (one side)	23.30	2	9.07 × 1.46 × 1.39	
	Self-loading device	0.35	4	0.80 × 0.75 × 0.91	Including float
	Gantry (H)	3.68	1	7.70 × 1.67 × 0.72	Including hanger
	Gantry (L)	0.33	2	1.70 × 0.30 × 1.12	Including cylinder
	Counterweight (A)	18.20	1	4.30 × 1.79 × 0.84	
	Counterweight (B)	16.70	1	4.28 × 1.79 × 0.62	
	Counterweight (C)	5.30	1	1.33 × 1.07 × 0.70	
	Counterweight (D)	8.50	1	1.73 × 1.30 × 0.70	
	Counterweight (E)	8.40	1	1.72 × 1.30 × 0.70	
	Counterweight (F)	5.00	1	1.63 × 0.90 × 0.75	
	Counterweight (G)	5.00	1	1.61 × 0.90 × 0.75	
	Counterweight (H)	6.10	1	1.68 × 1.25 × 0.61	
	Counterweight (I)	6.00	1	1.66 × 1.25 × 0.61	
Counterweight (Lower)	1.20	2	1.40 × 0.32 × 0.74	Track frame counterweight	
Crane front	Lower boom 7.5 m	3.10	1	7.72 × 2.47 × 2.50	
	Upper boom 10.5 m	3.26	1	10.94 × 2.24 × 2.29	
	Boom backstop	0.14	2	5.45 × 0.26 × 0.26	
	Bridle	0.53	1	2.10 × 0.69 × 0.33	
	Boom mast	1.54	1	10.17 × 1.36 × 1.19	
	Boom insert 3 m (A)	0.88	1	3.14 × 2.47 × 2.40	
	Boom insert 3 m (B)	1.38	1	3.14 × 2.47 × 2.59	
	Boom insert 6 m	1.22	1	6.14 × 2.47 × 2.40	
	Boom insert 9 m (A)	1.62	1	9.14 × 2.47 × 2.36	
	Boom insert 9 m (B)	1.68	1	9.14 × 2.47 × 2.38	
	Boom insert 12 m	1.92	1	12.14 × 2.47 × 2.36	
	Lower Jib 5m	0.30	1	5.11 × 1.24 × 0.97	
	Upper Jib 5 m	0.45	1	5.43 × 1.24 × 1.37	
	Jib insert 3 m	0.15	1	3.08 × 1.25 × 1.09	
Jib insert 6 m	0.26	1	6.08 × 1.25 × 1.09		
Jib mast	0.55	1	6.14 × 1.10 × 0.62		
Aux. Jib	0.39	1	2.22 × 1.04 × 1.43		
200 ton hook	2.60	1	2.38 × 0.74 × 0.93		
100 ton hook	1.40	1	2.13 × 0.75 × 0.54		
60 ton hook	1.20	1	2.12 × 0.74 × 0.35		
25 ton hook	0.85	1	1.74 × 0.74 × 0.38		
13 ton hook	0.50	1	1.18 × 0.47 × 0.47		

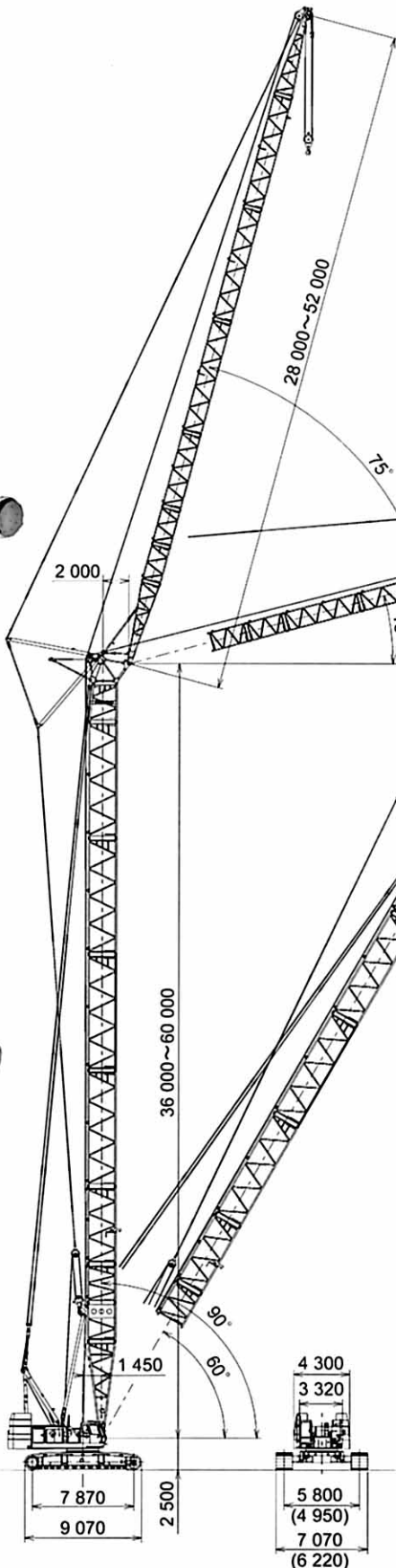
## ■ Dimensions

Unit: mm

### ■ Tower Jib Construction

Tower Length (m)	28			31			34			37			40			43			46			49			52		
	90	80	70	90	80	70	90	80	70	90	80	70	90	80	70	90	80	70	90	80	70	90	80	70			
36	○	○	○	○	○	○	○	○	○	○	○	○	○	○	○	○	○	○	○	○	○	○	○	○	○		
39	○	○	○	○	○	○	○	○	○	○	○	○	○	○	○	○	○	○	○	○	○	○	○	○	○		
42	○	○	○	○	○	○	○	○	○	○	○	○	○	○	○	○	○	○	○	○	○	○	○	○	○		
45	○	○	○	○	○	○	○	○	○	○	○	○	○	○	○	○	○	○	○	○	○	○	○	○	○		
48	○	○	○	○	○	○	○	○	○	○	○	○	○	○	○	○	○	○	○	○	○	○	○	○	○		
51	○	○	○	○	○	○	○	○	○	○	○	○	○	○	○	○	○	○	○	○	○	○	○	○	○		
54	○	○	○	○	○	○	○	○	○	○	○	○	○	○	○	○	○	○	○	○	○	○	○	○	○		
57	○	○	○	○	○	○	○	○	○	○	○	○	○	○	○	○	○	○	○	○	○	○	○	○	○		
60	○	○	○	○	○	○	○	○	○	○	○	○	○	○	○	○	○	○	○	○	○	○	○	○	○		

○:Available ×:Not Available



### ■ Specifications

(1 ton = 1 000 kg)

Maximum rated loads	ton × m	25.0 × 14.0 (36~51 m tower + 28 m Jib)
Tower length	m	36-60
Tower foot height	m	2.5
Jib length	m	28-52
Tower + Jib (max. length)	m	60+52
Working radius	m	77.5 (54 m tower + 49 m jib)
Max. lift above ground	m	109 (60 m tower + 52 m jib)
Line speeds		
Hoist/lower*	m/min	110/62/31
Jib hoist/lower*	m/min	31
Tower hoist/lower*	m/min	27 × 2
Ground pressure	kPa (kgf/cm <sup>2</sup> )	95.5 (0.97)
Operating weight	ton	205

(Equipped with 36 m tower, 28 m jib and 25 ton capacity hook)

Notes : 1. Data is expressed in SI units, along with conventional units in ( ).

2. Other specifications, not shown, are similar to those for the crawler crane.

3. Line speeds marked with asterisk (\*) will vary with the load.

Dimensions shown in ( ) are with side frames fully retracted.

# 75% Tipping Load

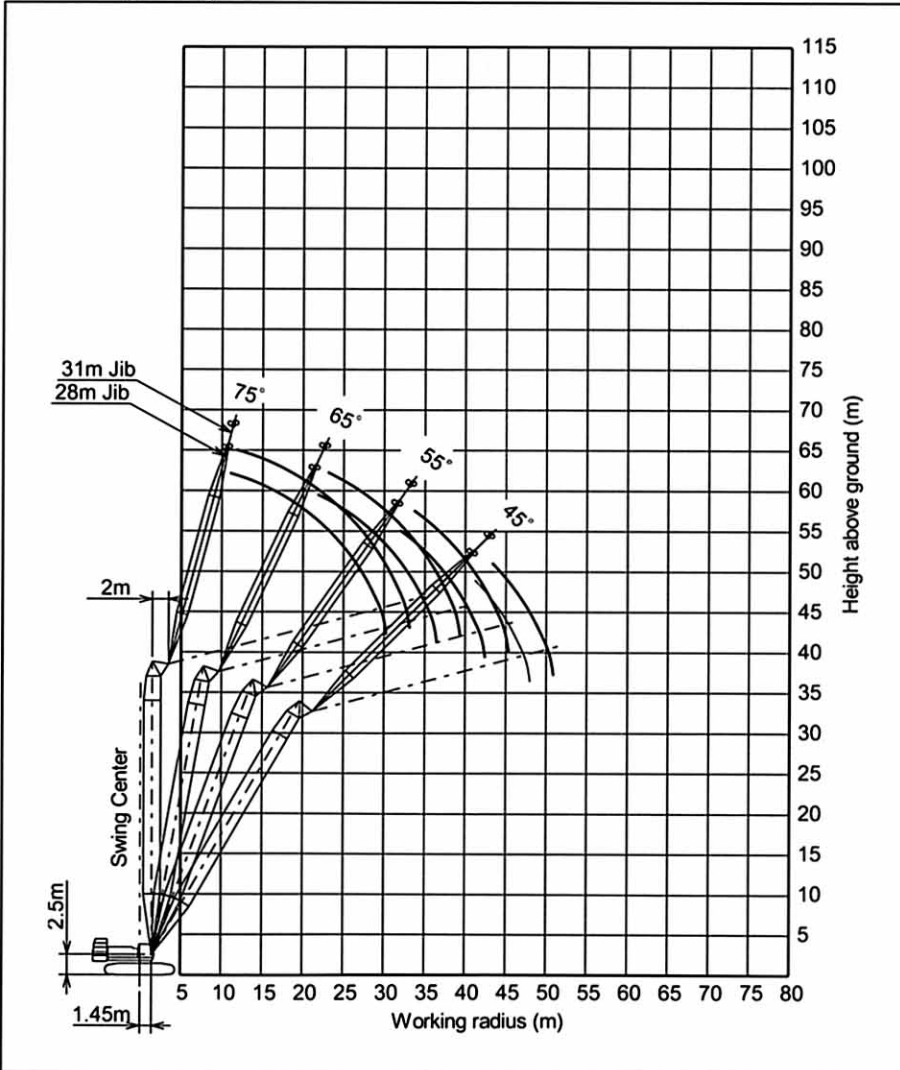
# 36m Tower (2 Rope Reeving)

## Rated Loads for Tower Crane

Unit: ton

Jib Length (m)	28				31			
	90	80	70	60	90	80	70	60
12.1	25.00				12.9×25.00			
14.0	25.00				25.00			
16.0	24.50				23.35			
18.0	23.05				21.75			
20.0	22.00	21.8×18.55			20.55			
22.0	21.40	18.25			19.70	23.1×17.15		
24.0	18.85	16.35			19.15	16.25		
26.0	16.20	14.80			16.80	14.70		
28.0	13.90	13.50			14.65	13.40		
30.0	11.55	12.40			12.75	12.30		
32.0	30.2×10.90	11.50	11.50		11.00	11.35	33.7×10.65	
34.0		10.65	10.65		33.1×9.60	10.50	10.50	
36.0		9.90	9.90			9.75	9.75	
38.0		36.4×9.75	9.25			9.10	9.10	
40.0			8.70	41.2×8.40		39.3×8.70	8.50	
42.0			8.15	8.15		8.00	8.00	43.3×7.70
44.0			42.4×8.05	7.65			7.55	7.50
46.0				7.25			45.3×7.25	7.10
48.0				47.9×6.85				6.70
50.0								6.35
50.8								6.20

## Working Ranges



Working ranges shown are under unloaded condition.

Notes 1. The rated loads shown do not exceed 75% of tipping load with the machine on firm level ground, and are not less than 1.15 times over-front stability stipulated by the mobile crane construction standards.

2. The load to be actually lifted will be the rated load shown minus the weight of all lifting attachments such as a hook.

Hook Capacity (ton)	Hook Weight (ton)
25	0.85

3. Working radius is a horizontal distance between swing center of the machine and center of gravity of a load lifted.

4. Figures described as  $\circ\circ \times \circ\circ$  in the tables indicate working radius (m)  $\times$  rated load (ton).

5. Counterweight is 81.6 ton (Upper: 79.2 ton/ Lower: 2.4 ton).

6. Be sure to fully extend the side frames before operating the machine.

# 75% Tipping Load

# 39 m Tower (2 Rope Reeving)

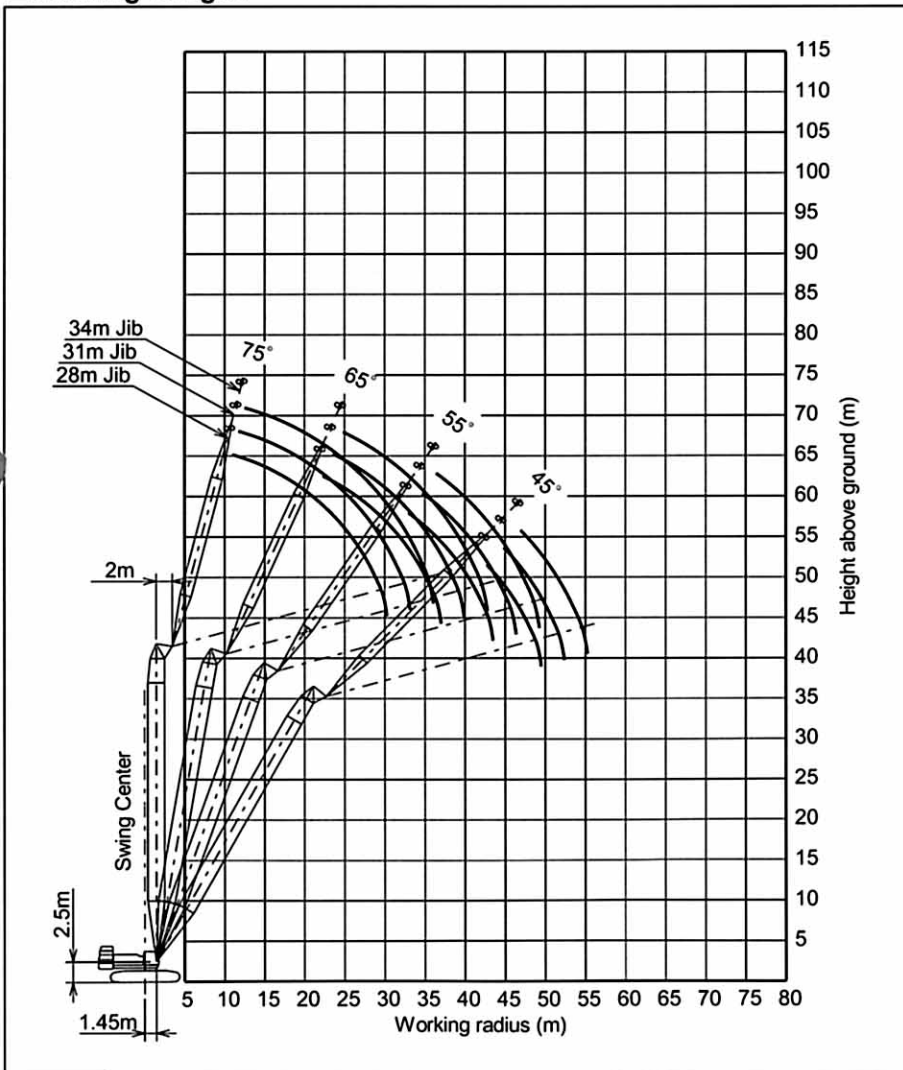
## Rated Loads for Tower Crane

Unit: ton

Jib Length (m)	28				31				34			
Tower Angle (°)	90	80	70	60	90	80	70	60	90	80	70	60
Working Radius (m)												
12.2	25.00				13.0×25.00				13.8×25.00			
14.0	25.00				25.00				24.90			
16.0	24.45				23.30				23.00			
18.0	22.95				21.75				21.40			
20.0	21.95				20.55				20.10			
22.0	21.35	22.3×17.95			19.65	23.6×16.70			19.15			
24.0	18.80	16.40			19.15	16.25			18.40	24.9×15.50		
26.0	16.20	14.85			16.80	14.70			17.95	14.60		
28.0	13.90	13.55			14.65	13.40			15.85	13.30		
30.0	11.55	12.40			12.70	12.30			14.00	12.20		
32.0	30.2×10.90	11.45	33.0×11.05		10.95	11.35			12.40	11.25		
34.0		10.60	10.60		33.1×9.60	10.50	34.7×10.25		10.95	10.40		
36.0		9.85	9.85			9.75	9.75		9.35	9.70	36.4×9.55	
38.0		36.9×9.55	9.25			9.10	9.10			9.05	9.00	
40.0			8.65			39.8×8.55	8.50			8.45	8.45	
42.0			8.15	42.7×8.00			8.00			7.95	7.95	
44.0			43.4×7.80	7.65			7.55	44.8×7.35		42.7×7.75	7.45	
46.0				7.20			7.10	7.05			7.05	47.0×6.80
48.0				6.80			46.3×7.05	6.65			6.65	6.55
50.0				49.4×6.55				6.30			49.2×6.45	6.20
52.0								6.00				5.90
54.0								52.3×5.95				5.60
55.2												5.40

※Notes for the 39 m tower are similar to those for the 36 m tower.

## Working Ranges



Working ranges shown are under unloaded condition.

# 75% Tipping Load

# 42m Tower (2 Rope Reeving)

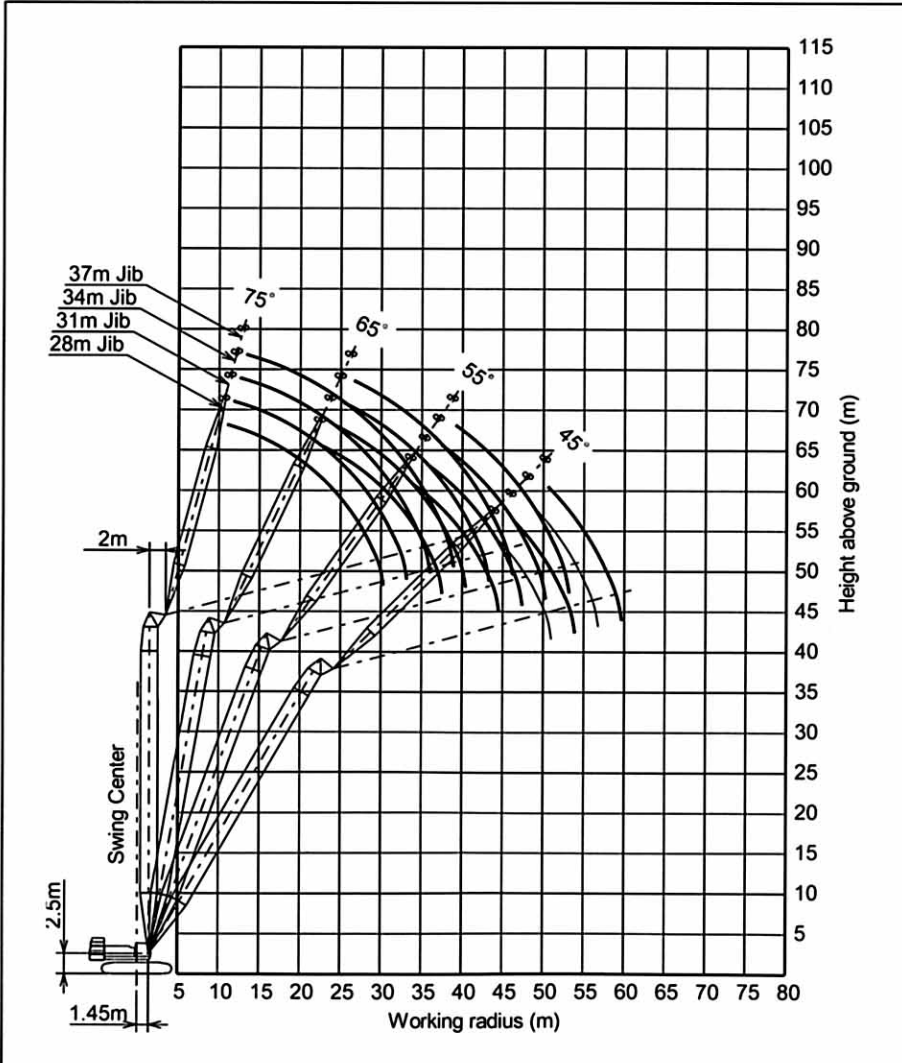
## Rated Loads for Tower Crane

Unit: ton

Jib Length (m)	28				31				34				37			
Tower Angle (°)	90	80	70	60	90	80	70	60	90	80	70	60	90	80	70	60
Working Radius (m)																
12.2	25.00				13.1×25.00				13.9×24.90							
14.0	25.00				25.00				24.85				14.7×23.10			
16.0	24.35				23.25				22.95				21.95			
18.0	22.90				21.70				21.40				20.40			
20.0	21.85				20.45				20.10				19.15			
22.0	21.30	22.8×17.50			19.60				19.10				18.10			
24.0	18.80	16.40			19.10	24.1×16.20			18.40	25.4×15.15			17.25			
26.0	16.15	14.85			16.80	14.70			17.90	14.65			16.65	26.6×14.10		
28.0	13.85	13.55			14.60	13.40			15.85	13.35			16.10	13.25		
30.0	11.55	12.40			12.70	12.30			14.00	12.20			14.35	12.10		
32.0	30.2×10.90	11.45			10.95	11.35			12.40	11.25			12.80	11.15		
34.0		10.60	10.60		33.1×9.60	10.50	35.7×9.85		10.90	10.40			11.40	10.35		
36.0		9.85	9.85			9.75	9.70		9.35	9.70	37.5×9.20		10.15	9.60		
38.0		37.4×9.40	9.20			9.10	9.05			9.05	9.00		8.95	8.95	39.2×8.55	
40.0			8.60			8.50	8.50			8.45	8.40		38.9×8.40	8.35	8.30	
42.0			8.10			40.3×8.45	7.95			7.90	7.90			7.85	7.80	
44.0			7.65	44.2×7.60			7.50			43.2×7.65	7.40			7.35	7.30	
46.0			44.4×7.55	7.20			7.10	46.3×7.00			7.00			6.95	6.90	
48.0				6.80			47.3×6.85	6.65			6.60	48.5×6.45		46.1×6.90	6.50	
50.0				6.40				6.25			6.25	6.15			6.15	50.6×6.00
52.0					50.9×6.25			5.95			50.2×6.25	5.85			5.85	5.70
54.0												5.55			53.1×5.70	5.45
56.0								53.8×5.65				5.25				5.15
58.0												56.7×5.20				4.90
59.6																4.70

※Notes for the 42 m tower are similar to those for the 36 m tower.

## Working Ranges



Working ranges shown are under unloaded condition.



# 75% Tipping Load

# 45m Tower (2 Rope Reeving)

## Rated Loads for Tower Crane

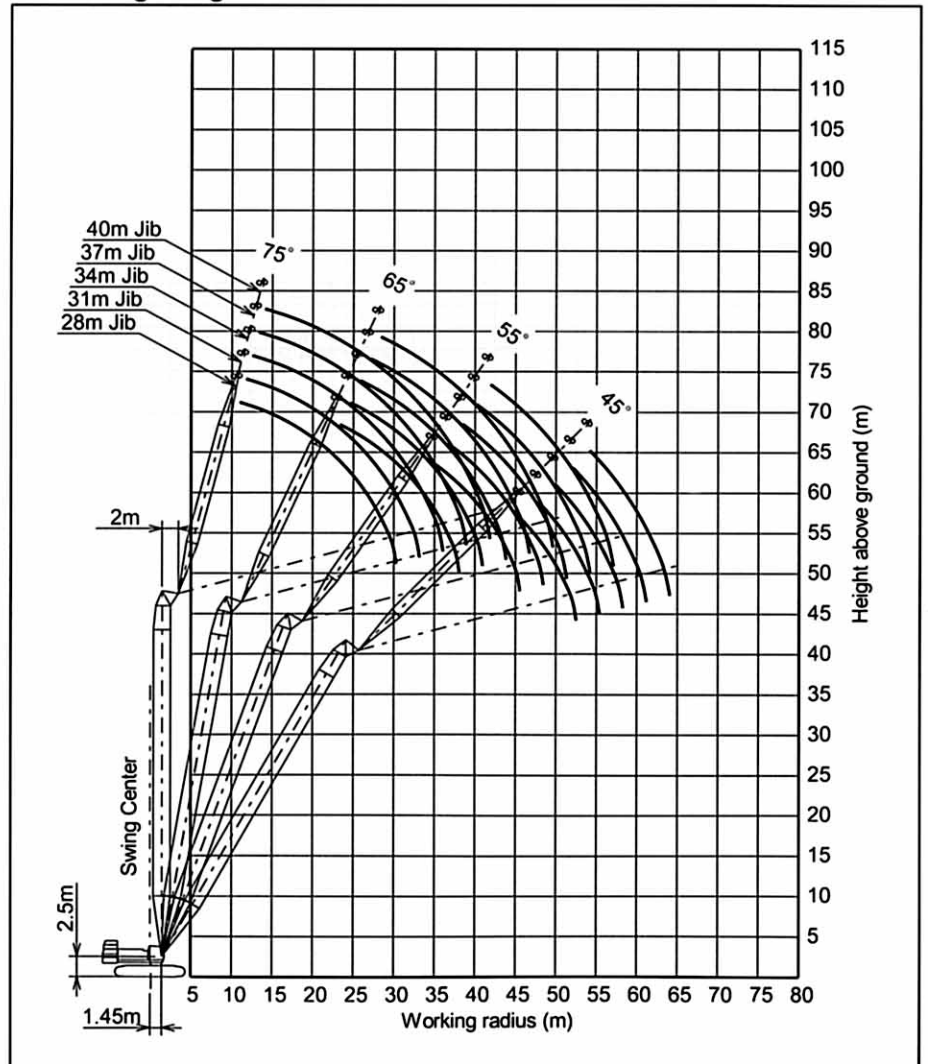
Unit: ton

Jib Length (m)	28				31				34				37			
Tower Angle (°)	90	80	70	60	90	80	70	60	90	80	70	60	90	80	70	60
Working Radius (m)																
12.3	25.00				13.1×25.00				13.9×24.80							
14.0	25.00				25.00				24.80				14.8×23.00			
16.0	24.30				23.20				22.90				21.95			
18.0	22.85				21.60				21.30				20.40			
20.0	21.80				20.40				20.05				19.10			
22.0	21.20	23.4×17.05			19.55				19.05				18.05			
24.0	18.75	16.40			19.05	24.6×15.80			18.30	25.9×14.80			17.25			
26.0	16.15	14.85			16.75	14.70			17.85	14.65			16.60	27.2×13.80		
28.0	13.85	13.55			14.60	13.40			15.80	13.35			16.10	13.20		
30.0	11.55	12.40			12.70	12.30			14.00	12.20			14.30	12.10		
32.0	30.2×10.90	11.45			10.90	11.35			12.35	11.25			12.75	11.15		
34.0		10.60	35.1×10.25		33.1×9.60	10.50			10.90	10.40			11.40	10.30		
36.0		9.85	9.85			9.75	36.8×9.50		9.35	9.65			10.15	9.60		
38.0			9.20			9.10	9.05			9.00	38.5×8.85		8.95	8.95		
40.0				8.60		8.50	8.45			8.45	8.40		38.9×8.35	8.35	40.2×8.25	
42.0				8.10						7.90	7.85			7.80	7.75	
44.0				7.60	45.7×7.25					7.50				7.35	7.30	
46.0				45.5×7.30	7.15					7.05	47.8×6.65			6.95	6.90	6.85
48.0					6.75					6.65	6.60			6.60	46.7×6.80	6.50
50.0					6.40					6.40	6.25			6.25	6.10	6.15
52.0					6.05					5.90		51.2×6.05	5.80		5.80	52.1×5.65
54.0						52.4×6.00				5.60			5.50		5.50	5.35
56.0										5.3×5.40			5.20		5.20	54.1×5.50
58.0													4.95			4.85
60.0														58.2×4.95		4.60
61.1																4.50

Jib Length (m)	40			
Tower Angle (°)	90	80	70	60
Working Radius (m)				
15.6	21.10			
16.0	20.85			
18.0	19.40			
20.0	18.15			
22.0	17.10			
24.0	16.25			
26.0	15.55			
28.0	15.00	28.4×12.85		
30.0	14.50	12.00		
32.0	12.95	11.05		
34.0	11.65	10.20		
36.0	10.45	9.45		
38.0	9.35	8.80		
40.0	8.35	8.20	41.9×7.65	
42.0	41.8×7.40	7.70	7.60	
44.0		7.25	7.15	
46.0		6.80	6.75	
48.0		6.40	6.35	
50.0		49.6×6.15	6.00	
52.0			5.70	
54.0			5.40	54.2×5.20
56.0			5.10	4.95
58.0			57.0×5.00	4.70
60.0				4.45
62.0				4.25
64.0				4.05

※Notes for the 45 m tower are similar to those for the 36 m tower.

## Working Ranges



Working ranges shown are under unloaded condition.

# 75% Tipping Load

# 48m Tower (2 Rope Reeving)

## Rated Loads for Tower Crane

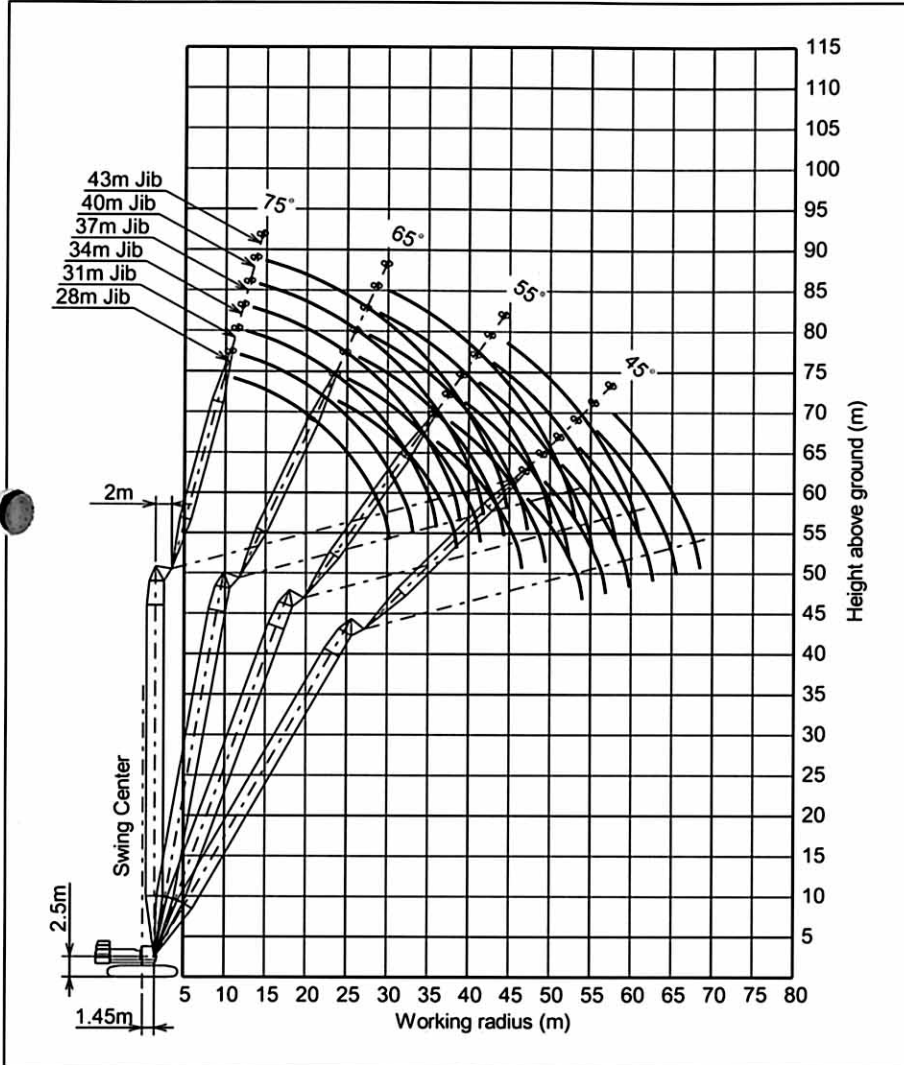
Unit: ton

Jib Length (m)	28				31				34				37			
	90	80	70	60	90	80	70	60	90	80	70	60	90	80	70	60
12.3	25.00				13.2×25.00											
14.0	25.00				25.00				24.75				14.8×22.85			
16.0	24.25				23.10				22.85				21.85			
18.0	22.75				21.55				21.25				20.35			
20.0	21.75				20.35				20.00				19.05			
22.0	21.15	23.9×16.60			19.50				19.00				18.00			
24.0	18.75	16.40			18.95	25.2×15.35			18.25				17.20			
26.0	16.10	14.85			16.75	14.70			17.80	26.4×14.35			16.55	27.7×13.45		
28.0	13.80	13.55			14.55	13.40			15.80	13.30			16.10	13.20		
30.0	11.55	12.40			12.65	12.30			13.95	12.20			14.30	12.10		
32.0	30.2×10.90	11.45			10.90	11.30			12.35	11.25			12.75	11.15		
34.0		10.60			33.1×9.60	10.45			10.90	10.40			11.35	10.30		
36.0		9.85	36.1×9.90			9.75	37.8×9.15		9.35	9.65			10.10	9.55		
38.0		9.20	9.20			9.10	9.05			9.00	39.5×8.50		8.90	8.90		
40.0		38.5×9.05	8.60			8.50	8.45			8.40	8.35		38.9×8.35	8.30	41.2×7.95	
42.0			8.05			41.4×8.10	7.95			7.90	7.85			7.80	7.70	
44.0			7.60				7.45			7.40	7.35			7.35	7.25	
46.0			7.15	47.2×6.95			7.05			44.3×7.35	6.95			6.90	6.85	
48.0			46.5×7.05	6.75			6.65	49.3×6.35			6.55			47.2×6.65	6.45	
50.0				6.35			49.4×6.40	6.20			6.20	51.5×5.85			6.10	
52.0				6.05				5.85			5.90	5.75			5.80	53.6×5.30
54.0				53.9×5.75				5.55			52.3×5.85	5.45			5.50	5.30
56.0								5.30				5.15			55.2×5.30	5.05
58.0								56.8×5.15				4.90				4.80
60.0												59.7×4.70				4.55
62.0																4.35
62.6																4.25

Jib Length (m)	40				43			
	90	80	70	60	90	80	70	60
15.6	21.05							
16.0	20.80				16.5×18.70			
18.0	19.35				18.50			
20.0	18.10				18.20			
22.0	17.05				17.25			
24.0	16.20				16.25			
26.0	15.50				15.35			
28.0	15.00	29.0×12.55			14.65			
30.0	14.45	11.95			14.05	30.2×11.75		
32.0	12.95	11.00			13.10	10.90		
34.0	11.60	10.15			11.80	10.10		
36.0	10.45	9.45			10.65	9.35		
38.0	9.35	8.80			9.60	8.70		
40.0	8.30	8.20			8.65	8.10		
42.0	41.8×7.35	7.70	43.0×7.40		7.75	7.60		
44.0		7.20	7.10		6.90	7.10	44.7×6.90	
46.0		6.80	6.70		44.7×6.55	6.70	6.60	
48.0		6.40	6.30			6.30	6.20	
50.0		6.05	5.95			5.95	5.85	
52.0		50.1×6.00	5.65			5.65	5.55	
54.0			5.35	55.7×4.95		53.0×5.50	5.25	
56.0			5.10	4.85			5.00	57.8×4.55
58.0			4.85	4.60			4.75	4.50
60.0			58.1×4.80	4.40			4.50	4.25
62.0				4.15			61.0×4.40	4.05
64.0				3.95				3.85
66.0				65.5×3.80				3.65
68.0								3.50
68.4								3.45

※Notes for the 48 m tower are similar to those for the 36 m tower.

■ Working Ranges



Working ranges shown are under unloaded condition.

# 75% Tipping Load

# 51 m Tower (2 Rope Reeving)

## Rated Loads for Tower Crane

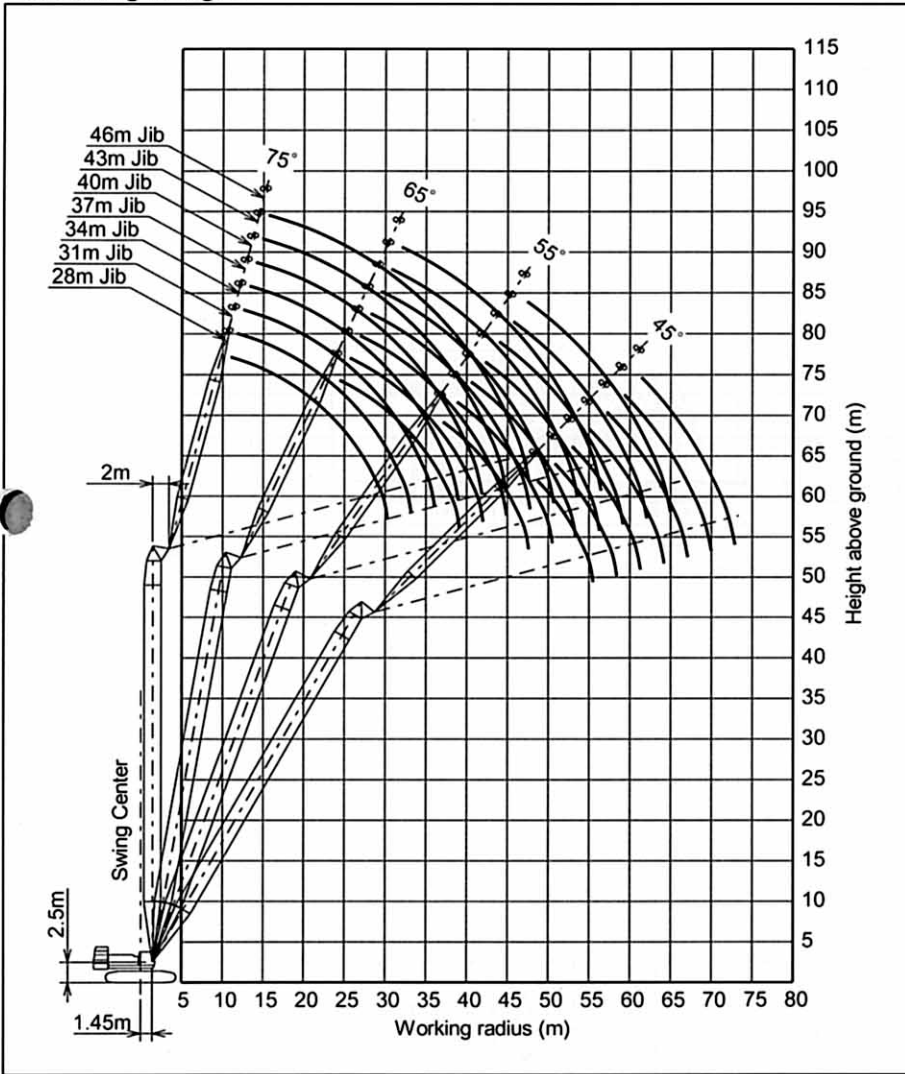
Unit: ton

Jib Length (m) Tower Angle (°) Working Radius (m)	28				31				34				37			
	90	80	70	60	90	80	70	60	90	80	70	60	90	80	70	60
12.4	25.00				13.2×24.80											
14.0	25.00				24.70				23.70				14.9×21.75			
16.0	24.20				23.10				22.80				21.45			
18.0	22.70				21.50				21.20				20.30			
20.0	21.70				20.30				19.95				19.00			
22.0	21.10				19.45				18.95				17.95			
24.0	18.75	24.4×16.15			18.90	25.7×14.95			18.20				17.15			
26.0	16.10	14.80			16.70	14.70			17.75	26.9×13.95			16.50			
28.0	13.80	13.50			14.55	13.35			15.75	13.30			16.05	28.2×13.05		
30.0	11.55	12.40			12.65	12.25			13.95	12.15			14.25	12.05		
32.0	30.2×10.90	11.40			10.90	11.30			12.35	11.20			12.70	11.10		
34.0		10.55			33.1×9.60	10.45			10.85	10.35			11.35	10.25		
36.0		9.85	37.1×9.50			9.70			9.35	9.60			10.10	9.55		
38.0		9.20	9.20			9.05	38.8×8.80			8.95			8.90	8.85		
40.0		39.0×8.85	8.60			8.45	8.40			8.40	40.5×8.20		38.9×8.30	8.30		
42.0			8.05			41.9×7.95	7.90			7.85	7.80			7.75	42.3×7.65	
44.0			7.60				7.45			7.40	7.35			7.30	7.20	
46.0			7.15				7.00			44.8×7.20	6.90			6.85	6.80	
48.0			47.5×6.85	48.7×6.65			6.60				6.50			47.7×6.55	6.40	
50.0				6.35			6.25	50.8×6.10			6.15				6.05	
52.0				6.05			50.4×6.20	5.85			5.85	53.0×5.60			5.75	
54.0				5.70				5.55			53.3×5.65	5.40			5.45	55.1×5.15
56.0				5.54×5.50				5.25				5.15			5.15	5.00
58.0								5.00				4.90			56.2×5.15	4.75
60.0								58.3×4.95				4.65				4.50
62.0												61.2×4.50				4.30
64.0																4.05
64.1																4.05

Jib Length (m) Tower Angle (°) Working Radius (m)	40				43				46			
	90	80	70	60	90	80	70	60	90	80	70	60
15.7	19.85											
16.0	19.80				16.5×18.10				17.3×15.45			
18.0	19.30				17.80				15.35			
20.0	18.05				17.20				15.10			
22.0	17.05				16.20				14.85			
24.0	16.15				15.35				14.50			
26.0	15.45				14.60				13.80			
28.0	14.95	29.5×12.25			14.05				13.20			
30.0	14.45	11.90			13.60	30.7×11.50			12.55			
32.0	12.95	10.95			13.10	10.85			11.90	10.75		
34.0	11.60	10.15			11.75	10.05			11.25	9.95		
36.0	10.40	9.40			10.60	9.30			10.60	9.20		
38.0	9.30	8.75			9.60	8.65			9.70	8.55		
40.0	8.30	8.15			8.65	8.10			8.80	8.00		
42.0	41.8×7.35	7.65			7.75	7.55			7.95	7.45		
44.0		7.15	7.05		6.85	7.10	45.7×6.65		7.20	7.00		
46.0		6.75	6.65		44.7×6.55	6.65	6.55		6.40	6.55	47.4×6.20	
48.0		6.35	6.25			6.30	6.15		47.6×5.80	6.20	6.05	
50.0		6.00	5.90			5.90	5.80			5.85	5.70	
52.0		50.6×5.90	5.60			5.60	5.50			5.50	5.40	
54.0			5.30			53.5×5.40	5.20			5.20	5.10	
56.0			5.05	57.2×4.70			4.95			4.95	4.80	
58.0			4.80	4.55			4.70	59.3×4.30		56.4×4.90	4.55	
60.0			59.1×4.65	4.30			4.45	4.20			4.35	61.4×3.90
62.0				4.10			4.25	4.00			4.15	3.85
64.0				3.90				3.75			3.95	3.65
66.0				3.70				3.60			64.9×3.85	3.45
68.0				67.0×3.60				3.40				3.25
70.0								69.9×3.25				3.10
72.0												2.95
72.8												2.90

※Notes for the 51 m tower are similar to those for the 36 m tower.

## Working Ranges



Working ranges shown are under unloaded condition.

# 75% Tipping Load

# 54<sub>m</sub> Tower (2 Rope Reeving)

## Rated Loads for Tower Crane

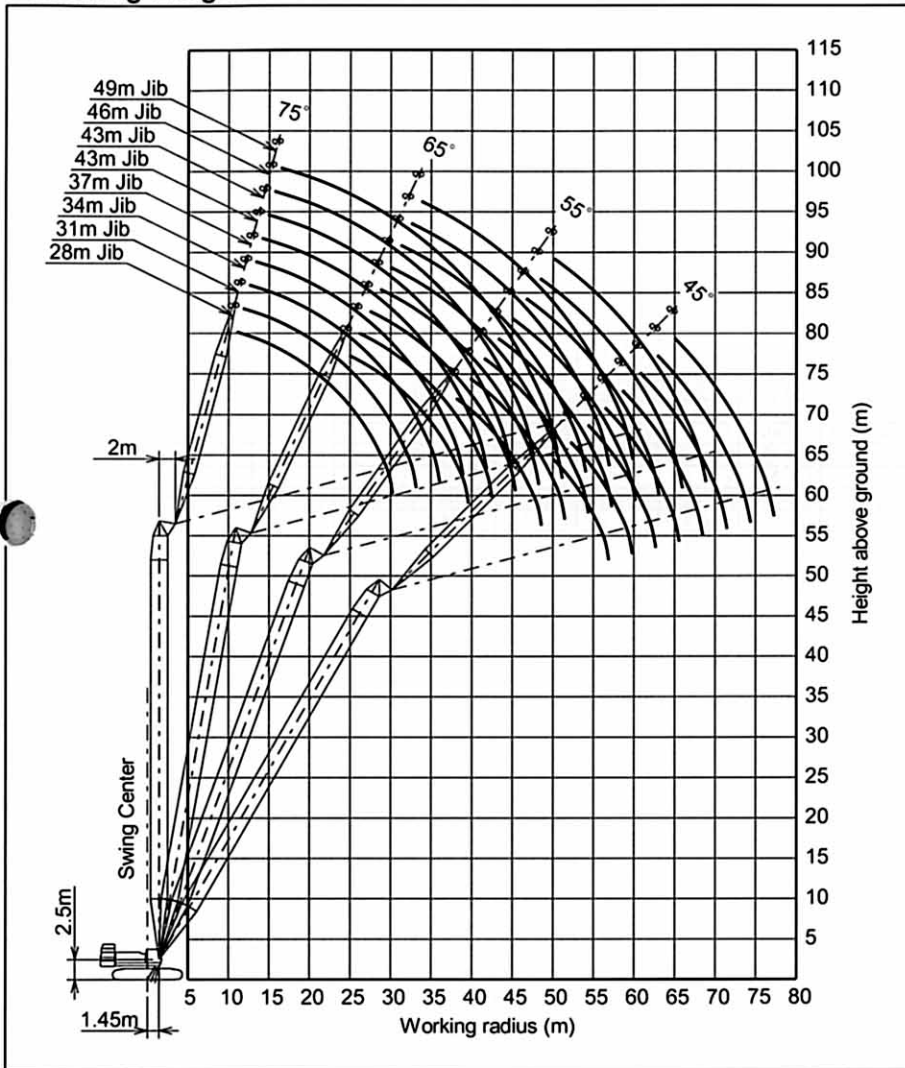
Unit: ton

Jib Length (m)	28				31				34				37			
	90	80	70	60	90	80	70	60	90	80	70	60	90	80	70	60
Tower Angle (°)																
Working Radius (m)																
12.4	25.00				13.3×23.20											
14.0	24.65				23.00				14.1×22.05				14.9×20.30			
16.0	23.95				22.35				21.55				20.05			
18.0	22.65				21.45				21.00				19.55			
20.0	21.65				20.25				19.90				18.95			
22.0	21.05				19.40				18.90				17.90			
24.0	18.70	24.9×15.60			18.85				18.15				17.10			
26.0	16.05	14.80			16.70	26.2×14.55			17.70	27.5×13.60			16.45			
28.0	13.75	13.50			14.50	13.35			15.75	13.25			16.05	28.7×12.70		
30.0	11.55	12.35			12.60	12.20			13.90	12.15			14.25	12.00		
32.0	30.2×10.90	11.40			10.85	11.25			12.30	11.15			12.70	11.05		
34.0		10.55			33.1×9.60	10.40			10.85	10.35			11.30	10.20		
36.0		9.80				9.70			9.35	9.60			10.05	9.50		
38.0		9.20	38.1×9.20			9.00	39.9×8.50			8.95			8.85	8.85		
40.0		39.5×8.70	8.60			8.45	8.40			8.35	41.6×7.90		38.9×8.30	8.25		
42.0			8.05			7.90	7.90			7.85	7.75			7.75	43.3×7.35	
44.0			7.55			42.4×7.80	7.40			7.35	7.30			7.25	7.20	
46.0			7.15				7.00			45.3×7.05	6.90			6.85	6.75	
48.0			6.75				6.60				6.50			6.45	6.40	
50.0			48.5×6.65	50.2×6.30			6.25				6.15			48.2×6.40	6.00	
52.0				6.00			51.4×6.00	52.3×5.80			5.80				5.70	
54.0				5.70				5.50			5.50	54.5×5.35			5.40	
56.0				5.40				5.20			54.3×5.45	5.10			5.15	56.6×4.90
58.0					56.9×5.30			4.95				4.85			57.2×4.95	4.70
60.0									59.8×4.75					4.60		4.45
62.0														4.35		4.20
64.0														62.7×4.30		4.00
65.6																3.85

Jib Length (m)	40				43				46				49			
	90	80	70	60	90	80	70	60	90	80	70	60	90	80	70	60
Tower Angle (°)																
Working Radius (m)																
15.7	18.50															
16.0	18.45				16.6×16.80					17.4×15.25						
18.0	18.05				16.60					15.15			18.2×12.75			
20.0	17.65				16.25					14.85			12.55			
22.0	17.00				15.95					14.60			12.30			
24.0	16.10				15.30					14.35			12.05			
26.0	15.45				14.60					13.75			11.80			
28.0	14.90				14.00					13.15			11.60			
30.0	14.40	11.90			13.55	31.0×11.20				12.50			11.05			
32.0	12.90	10.90			13.05	10.85				11.85	32.5×10.50		10.40	33.8×9.85		
34.0	11.55	10.10			11.75	10.00				11.25	9.90		9.85	9.75		
36.0	10.40	9.35			10.60	9.25				10.60	9.15		9.30	9.05		
38.0	9.30	8.70			9.55	8.60				9.70	8.50		8.70	8.40		
40.0	8.25	8.15			8.60	8.05				8.75	7.95		8.10	7.80		
42.0	41.8×7.35	7.60			7.70	7.50				7.95	7.40		7.60	7.30		
44.0		7.15	45.0×6.85		6.85	7.05				7.15	6.95		7.10	6.80		
46.0		6.70	6.60		44.7×6.50	6.60	46.7×6.40			6.40	6.50		6.55	6.40		
48.0		6.30	6.20			6.25	6.10			47.6×5.80	6.15	48.5×5.95	5.90	6.00		
50.0		5.95	5.85			5.90	5.75				5.80	5.65	5.25	5.65	50.2×5.50	
52.0		51.1×5.80	5.55			5.55	5.45				5.45	5.35	50.5×5.10	5.35	5.20	
54.0			5.25			5.25	5.15				5.15	5.05		5.05	4.90	
56.0			5.00				4.90				4.90	4.75		4.75	4.60	
58.0			4.75	58.7×4.45			4.65				56.9×4.80	4.50		4.50	4.35	
60.0			4.50	4.25			4.40	60.8×4.05				4.30		59.8×4.30	4.15	
62.0				60.1×4.50	4.05		4.20	3.90				4.05	62.9×3.70		3.95	
64.0					3.80		63.0×4.10	3.70				3.85	3.55		3.75	65.1×3.25
66.0					3.65			3.50				65.9×3.70	3.35		3.55	3.15
68.0					3.45			3.30					3.15		3.35	2.90
70.0					68.5×3.40			3.15					3.00		68.8×3.30	2.70
72.0								71.4×3.05					2.80			2.50
74.0													2.60			2.30
76.0													74.3×2.55			2.15
77.2																2.05

※Notes for the 54 m tower are similar to those for the 36 m tower.

■ Working Ranges



Working ranges shown are under unloaded condition.

# 75% Tipping Load

# 57 m Tower (2 Rope Reeving)

## Rated Loads for Tower Crane

Unit: ton

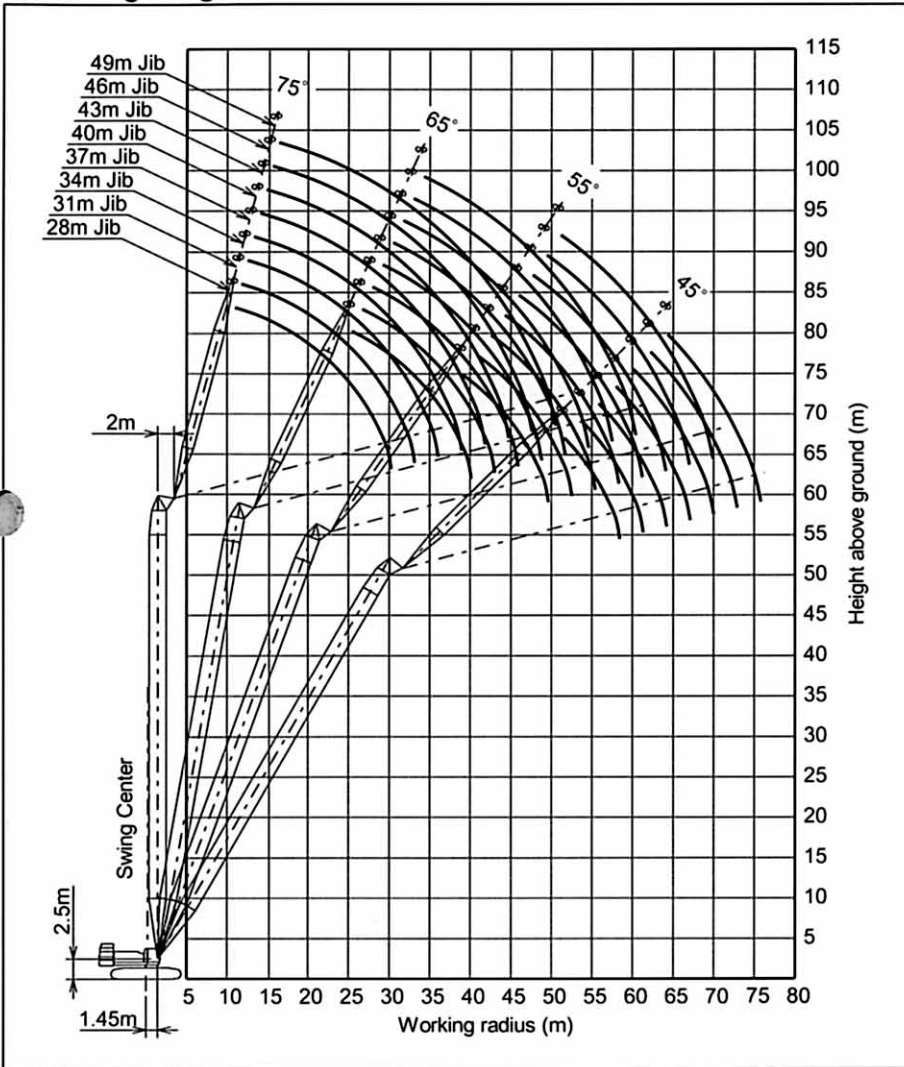
Jib Length (m)	28				31				34				37			
Tower Angle (°)	90	80	70	60	90	80	70	60	90	80	70	60	90	80	70	60
Working Radius (m)																
12.5	23.80				13.3×21.90											
14.0	23.30				21.70				14.1×20.90				15.0×19.20			
16.0	22.65				21.15				20.35				18.95			
18.0	21.65				20.60				19.90				18.55			
20.0	20.90				19.70				19.05				18.10			
22.0	20.15				18.85				18.50				17.40			
24.0	18.70	25.4×15.20			18.20				17.75				16.75			
26.0	16.05	14.75			16.65	26.7×14.10			17.20				16.15			
28.0	13.75	13.45			14.50	13.30			15.70	13.20			15.70	29.2×12.40		
30.0	11.55	12.30			12.60	12.15			13.90	12.10			14.25	11.95		
32.0	30.2×10.90	11.35			10.85	11.20			12.30	11.10			12.70	11.00		
34.0		10.50			33.1×9.60	10.35			10.80	10.30			11.30	10.20		
36.0		9.75				9.65			9.35	9.55			10.05	9.45		
38.0		9.10	39.2×8.85			9.00				8.90			8.85	8.80		
40.0		8.55	8.55			8.40	40.9×8.15			8.30			38.9×8.25	8.20		
42.0			8.00			7.85	7.85			7.80	42.6×7.60			7.70		
44.0			7.55			42.9×7.65	7.40			7.30	7.25			7.20	44.3×7.10	
46.0			7.10				6.95			45.8×6.90	6.85			6.80	6.70	
48.0			6.70				6.55				6.45			6.40	6.35	
50.0			49.6×6.40	51.7×6.05			6.20				6.10			48.7×6.25	6.00	
52.0				6.00			5.85	53.8×5.55			5.80				5.65	
54.0				5.70			52.5×5.80	5.50			5.50				5.35	
56.0				5.40				5.20			55.4×5.30	5.10			5.10	
58.0				5.10				4.95				4.80			4.85	58.1×4.65
60.0				58.4×5.05				4.70				4.55			58.2×4.80	4.40
62.0								61.3×4.55				4.35				4.20
64.0												4.10				3.95
66.0												64.2×4.10				3.70
67.1																3.60

Jib Length (m)	40				43				46				49		
Tower Angle (°)	90	80	70	60	90	80	70	60	90	80	70	60	90	80	70
Working Radius (m)															
15.8	17.50														
16.0	17.45				16.6×15.90				17.5×14.40						
18.0	17.05				15.65				14.35				18.3×12.60		
20.0	16.70				15.35				14.05				12.40		
22.0	16.40				15.05				13.75				12.20		
24.0	15.75				14.80				13.50				12.00		
26.0	15.15				14.25				13.30				11.80		
28.0	14.65				13.75				12.85				11.55		
30.0	14.25	30.5×11.55			13.30	31.8×10.90			12.50				11.00		
32.0	12.90	10.85			12.95	10.75			11.85	33.1×10.25			10.35		
34.0	11.55	10.05			11.75	9.95			11.20	9.85			9.85	34.3×9.20	
36.0	10.35	9.30			10.55	9.20			10.60	9.10			9.30	8.95	
38.0	9.25	8.65			9.55	8.55			9.65	8.45			8.65	8.30	
40.0	8.25	8.10			8.60	8.00			8.75	7.90			8.10	7.75	
42.0	41.8×7.30	7.55			7.70	7.45			7.90	7.35			7.60	7.25	
44.0		7.10			6.80	7.00			7.15	6.90			7.05	6.75	
46.0		6.65	6.55		44.7×6.50	6.55	47.8×6.15		6.40	6.45			6.55	6.35	
48.0		6.30	6.20			6.20	6.05		47.6×5.75	6.10	49.5×5.70		5.90	5.95	
50.0		5.90	5.85			5.85	5.70			5.75	5.60		5.25	5.60	51.2×5.25
52.0		51.6×5.65	5.50			5.50	5.40			5.40	5.30		50.5×5.05	5.30	5.10
54.0			5.20			5.20	5.10			5.10	5.00			5.00	4.85
56.0			4.95			54.5×5.15	4.85			4.85	4.70			4.70	4.55
58.0			4.70				4.60			57.4×4.65	4.45			4.45	4.30
60.0			4.45	60.2×4.10			4.35				4.25			4.25	4.10
62.0			61.1×4.35	3.90			4.15	62.3×3.65			4.00			60.3×4.20	3.85
64.0				3.65			3.95	3.45			3.80	64.4×3.15			3.65
66.0				3.40				3.20			3.60	2.95			3.45
68.0				3.20				3.00			66.9×3.55	2.75			3.30
70.0				3.00				2.80				2.55			69.8×3.15
72.0								2.60				2.35			
74.0								72.9×2.50				2.20			
75.8												2.05			

※Notes for the 57 m tower are similar to those for the 36 m tower.



■ Working Ranges



Working ranges shown are under unloaded condition.

# 75% Tipping Load

# 60m Tower (2 Rope Reeving)

## Rated Loads for Tower Crane

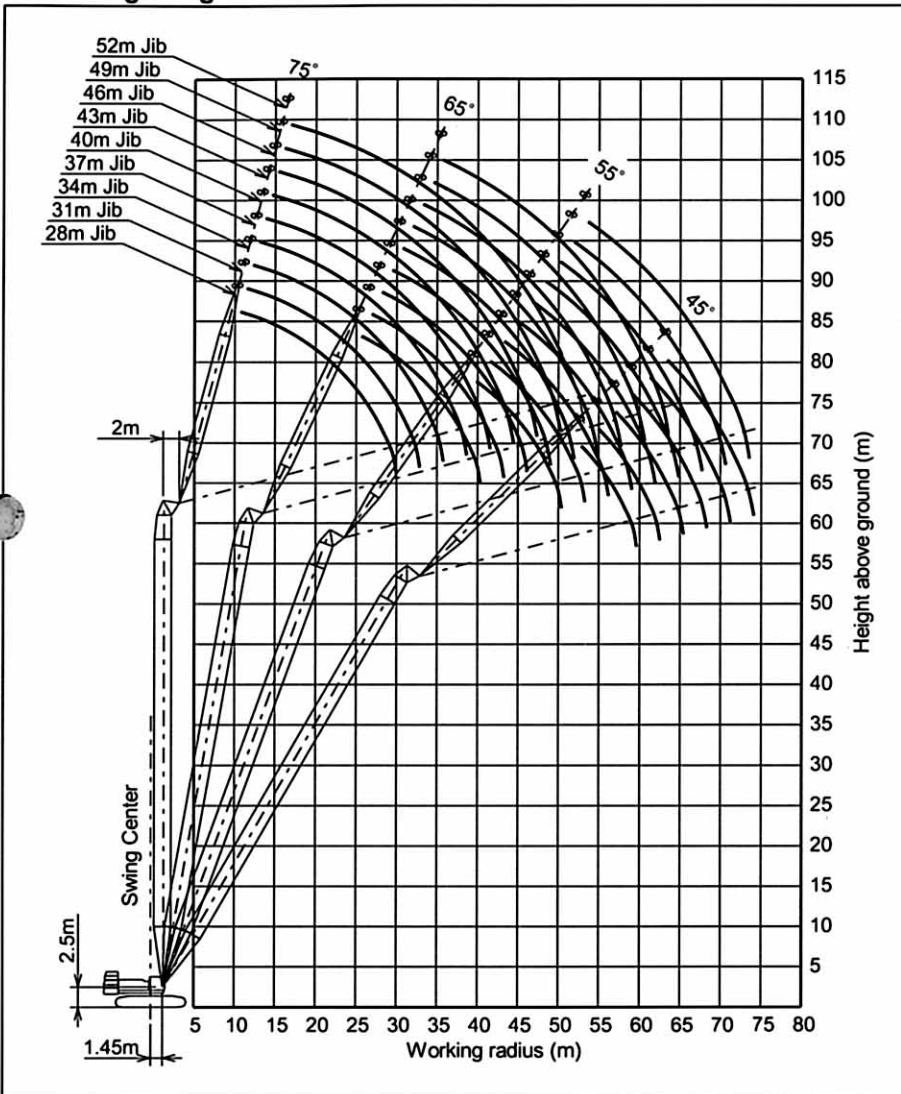
Unit: ton

Jib Length (m)	28				31				34				37			
	Tower Angle (°)				Tower Angle (°)				Tower Angle (°)				Tower Angle (°)			
Working Radius (m)	90	80	70	60	90	80	70	60	90	80	70	60	90	80	70	60
12.5	21.40				13.4·19.75											
14.0	21.00				19.60				14.2·18.85				15.0·17.35			
16.0	20.45				19.10				18.45				17.15			
18.0	20.00				18.60				18.05				16.75			
20.0	19.55				18.20				17.65				16.40			
22.0	19.20				17.75				17.25				16.10			
24.0	18.60				17.30				16.80				15.80			
26.0	16.00	14.35			16.60	27.2·13.45			16.25				15.25			
28.0	13.70	13.10			14.40	12.95			15.65	28.5·12.65			14.75	29.8·11.85		
30.0	11.50	12.00			12.50	11.90			13.80	11.80			14.15	11.70		
32.0	30.2·10.90	11.10			10.75	10.95			12.20	10.85			12.60	10.80		
34.0		10.25			33.1·9.60	10.15			10.75	10.05			11.20	10.00		
36.0		9.55				9.45			9.25	9.35			9.95	9.25		
38.0		8.90				8.80				8.75			8.75	8.65		
40.0		8.35	40.2·8.35			8.25	41.9·7.75			8.20			38.9·8.20	8.10		
42.0		40.6·8.20	7.85			7.75	7.70			7.65	43.6·7.20			7.60		
44.0			7.40			43.5·7.40	7.20			7.20	7.10			7.15	45.3·6.70	
46.0			6.95				6.80			6.80	6.70			6.75	6.55	
48.0			6.55				6.40			46.4·6.75	6.30			6.35	6.20	
50.0			6.20				6.05				5.95			49.3·6.15	5.85	
52.0			50.6·6.10	53.2·5.80			5.75				5.65				5.50	
54.0				5.65			53.5·5.50	55.3·5.20			5.35				5.20	
56.0				5.35				5.05			5.05	57.5·4.65			4.95	
58.0				5.05				4.75			56.4·5.00	4.55			4.70	59.6·4.10
60.0				59.9·4.80				4.45				4.25			59.3·4.55	4.00
62.0								4.20							4.00	3.75
64.0								62.8·4.10							3.75	3.50
66.0													65.7·3.55			3.30
68.0																3.05
68.6																3.00

Jib Length (m)	40				43				46			49			52		
	Tower Angle (°)				Tower Angle (°)				Tower Angle (°)			Tower Angle (°)			Tower Angle (°)		
Working Radius (m)	90	80	70	60	90	80	70	60	90	80	70	90	80	70	90	80	70
15.8	15.85																
16.0	15.80				16.7·14.40				17.5·13.00								
18.0	15.45				14.20				12.95			18.3·11.55			19.1·10.25		
20.0	15.10				13.90				12.70			11.40			10.20		
22.0	14.80				13.65				12.45			11.20			10.00		
24.0	14.55				13.40				12.25			11.00			9.85		
26.0	14.30				13.15				12.05			10.85			9.65		
28.0	13.80				12.80				11.85			10.70			9.50		
30.0	13.35	31.0·11.10			12.40				11.55			10.55			9.30		
32.0	12.80	10.65			12.00	32.3·10.20			11.10	33.6·9.20		10.35			9.15		
34.0	11.45	9.85			11.60	9.75			10.70	9.20		9.85	34.8·8.10		9.00		
36.0	10.25	9.15			10.50	9.05			10.20	9.00		9.30	8.05		8.80	36.1·7.00	
38.0	9.20	8.55			9.45	8.45			9.55	8.35		8.65	7.95		8.60	6.95	
40.0	8.15	7.95			8.50	7.90			8.65	7.80		8.10	7.70		8.00	6.85	
42.0	41.8·7.20	7.45			7.60	7.40			7.80	7.30		7.60	7.20		7.45	6.80	
44.0		7.00			6.75	6.95			7.05	6.85		7.05	6.75		6.90	6.65	
46.0		6.60	47.1·6.20		44.7·6.40	6.55			6.30	6.45		6.45	6.35		6.30	6.20	
48.0		6.25	6.00			6.15	48.8·5.80		47.6·5.65	6.10		5.80	5.95		5.80	5.85	
50.0		5.90	5.65			5.85	5.55			5.75	50.5·5.35	5.15	5.60		5.15	5.50	
52.0		5.60	5.35			5.50	5.25			5.40	5.10	50.5·4.95	5.30	52.2·4.90	4.55	5.20	53.9·4.55
54.0		52.2·5.55	5.05			5.20	4.95			5.10	4.85		5.00	4.65	53.4·4.00	4.95	4.50
56.0			4.80			55.1·5.05	4.70			4.85	4.55		4.70	4.40		4.65	4.25
58.0			4.55				4.45			4.60	4.30		4.45	4.15		4.40	4.00
60.0			4.30	61.7·3.50			4.20				4.10		4.25	3.95		4.20	3.80
62.0			4.10	3.45			4.00	63.8·3.05			3.85		60.9·4.15	3.70		4.00	3.55
64.0			62.2·4.10	3.20			3.80	3.00			3.70			3.50		63.8·3.80	3.35
66.0				2.95			65.1·3.70	2.80			3.50			3.35			3.20
68.0				2.75				2.60			3.30			3.15			3.00
70.0				2.55				2.40						3.00			2.85
72.0				71.5·2.45				2.25						70.9·2.95			2.70
74.0								2.05									73.8·2.60
74.4								2.00									

※Notes for the 60 m tower are similar to those for the 36 m tower.

## ■ Working Ranges



Working ranges shown are under unloaded condition.



## ■ Standard Equipment

### BASIC MACHINE

#### Undercarriage

- Crawler-type undercarriage (with 1 270 mm shoes)
- 2.40 ton (1.20 ton × 2) Lower counterweight (Track frame)

#### Superstructure

- Front lights (2 lights)
- Rearview mirrors (left and right)
- Boom hoist drum check mirror
- Centralized lubrication system (for gantry and swing circle)
- Electric refuel device
- Ladder (right)
- Undercover (at superstructure bottom)
- Cab climbing step
- Ultra slow speed controller
- Slow boom hoisting stop
- Constant swing speed controller
- Electric accelerator grip
- Gantry hoist cylinders
- Boom foot pin assembling device
- Drum rotation sensing system
- 79.2 ton counterweight
- Standard tool kit

#### Cab

- Intermittent windshield wipers (front and roof windows)
- Windshield washers (front and roof windows)
- Rolled sunshade (roof window)
- Sunvisor
- Floor mat
- Room light
- Air conditioner
- Auto-tuning (AM/FM) clock radio
- Cigarette lighter
- Ashtray
- Brake mode selector switches (interlocked)
- Electric tilt-type lever stand

#### Safety Devices

- Swing lock
- Drum pawl locks (main and auxiliary hoist, and boom hoist)
- Swing alarm (buzzer & lamp)
- Fail-safe brake systems
- Pilot-control shutoff lever
- Before-work check monitor

### FRONT ATTACHMENTS

#### Crane

- 18 m basic boom (lower 7.5 m, upper 10.5 m)
- Boom backstop
- Boom angle indicator
- 200 ton hook
- Main hoist rope (28 mm dia. × 370 m)
- Boom hoist rope (22 mm dia. × 350 m)
- Moment limiter
- Overhoist prevention devices (main hook, boom hoist and secondary boom hoist)

#### Tower Crane

- 60 m tower boom (lower 7.5 m, 3 m tower boom insert × 2, 6 m tower boom insert × 1, 9 m tower boom insert × 4, upper 3 m + 1.5 m)
- 52 m tower jib boom (lower 6.5 m, 3 m tower jib insert × 2, 6 m tower jib insert × 1, 9 m tower jib insert × 3, upper 6.5 m)
- Tower boom backstop
- Tower boom angle indicator
- 25 ton hook
- Main hoist rope (28 mm dia. × 370 m)
- Tower jib boom hoist rope (28 mm dia. × 210 m)
- Tower boom hoist rope (22 mm dia. × 350 m)
- Moment limiter
- Overhoist prevention devices (main hook, tower boom hoist, tower jib boom hoist and secondary jib boom hoist)
- Anemometer
- Spirit level (in cab)
- Tower hoist pad

## ■ Standard and Optional Equipment

○:Standard ●:Option — :Not recommended

	Crane	Tower Crane
<b>Undercarriage</b>		
Self-loading device	●	●
Side-frame removal device	●	●
Spirit level	●	●
<b>Superstructure</b>		
Reeving Winch (Reeving winch, reeving rope (10 mm dia. × 220 m), reeving joint, guide roller)	●	●
Side steps w/handrails	●	●
Side steps (folded) w/o handrail	●	●
Gantry climbing unit	○	○
Boom foot pin assembling device	○	○
<b>Cab</b>		
Extinguisher	●	●
Speaker	●	●
AM / FM clock radio	○	○
Fan	●	●
Air conditioner	○	○
Heater	●	●
<b>Safety Device</b>		
Anemometer	●	○
Spirit level (in cab)	●	○
<b>Crane / Tower Crane Front</b>		
37 m jib assembly: 13 m basic jib (Incl. jib mast, 3 m jib insert) aux. jib rope (28 mm dia. × 230 m)* <sup>4</sup> , 13 ton hook, 6 m jib insert × 4 pcs	●	● *2,*4
2 reevings aux. hoist rope (28 mm dia. × 300 m)* <sup>4</sup>	●	—
Aux. jib assembling aux. jib * <sup>2,*3</sup> , aux. jib hoist rope (28 mm dia. × 190 m)* <sup>2</sup> , 13 ton hook	●	● *2
Crane Front accessories 10.5 m upper boom, 200 ton hook, boom stop, main hoist hook overhoist prevention device, intermediate suspension parts, 12 m boom insert × 2 pcs	—	●
Boom mast	● * <sup>5</sup>	● *1,*5
Intermediate suspension parts	● * <sup>6</sup>	● *1,*6
200 ton hook (16 rope reevings)	○	● * <sup>1</sup>
100 ton hook (8 rope reevings)	●	● * <sup>2</sup>
60 ton hook (5 rope reevings)	●	● * <sup>2</sup>
25 ton hook (2 rope reevings)	●	○
13 ton hook (1 rope reeving)	●	●
3 m boom insert (A)	●	○
3 m boom insert (B)	●	○
6 m boom insert	●	○
9 m boom insert (A)	●	○
9 m boom insert (B)* <sup>6</sup>	● * <sup>6</sup>	○
12 m boom insert	●	● * <sup>1</sup>

Notes \*1 Included in crane front accessories.

\*2 Available when purchasing crane front accessories.

\*3 Required when purchasing jib assembly, except for common components.

\*4 230 m aux. hoist rope for crane jib is based on 1-rope reeving.

300 m aux. hoist rope for crane jib is based on 2-rope reevings.

\*5 Required for boom length of 66 m or longer.

\*6 Required for maximum boom length of 90 m.

A series of horizontal dotted lines for writing, spanning the width of the page.



 **Hitachi Construction Machinery Co., Ltd.**

**Head Office** : Nippon Bldg., 6-2, 2-chome, Ohtemachi,  
Chiyoda-ku, Tokyo 100-0004, Japan

**Telephone** : Tokyo (03) 3245-6390

**Facsimile** : Tokyo (03) 3246-2609

This catalog is not applicable to European and North America areas.  
The machine shown may vary according to territory Specifications.  
Specifications are subject to change without notice.