

CX700

HYDRAULIC CRAWLER CRANE

Specifications

HITACHI

CX700

HYDRAULIC CRAWLER CRANE

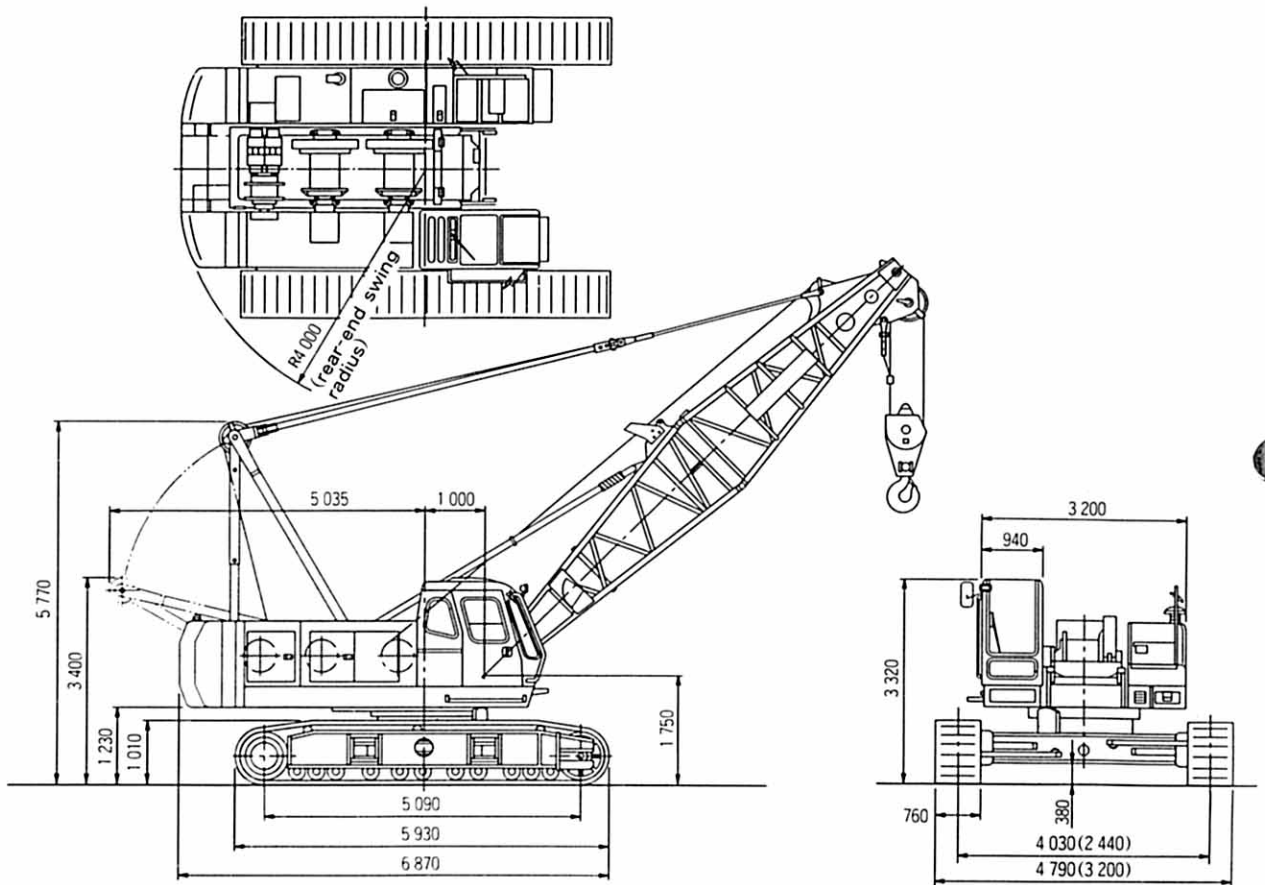
INDEX

CRAWLER CRANE	■Dimensions ■Specifications	4
	■Working Ranges	5
	■Crane Ratings (Main Boom in 360° Working Area) ...	6
	■Crane Ratings (Auxiliary Jib in 360° Working Area)	8
	■Crane Ratings (Main boom with Auxiliary Jib in 360° Working Area)	10
	■Crane Ratings (Jib in 360° Working Area)	12
	■Crane Ratings (Main Boom with Jib in 360° Working Area)	20
	■Crane Boom Construction ■Crane Jib Construction	
	■Component Weights and Dimensions for Transport	28
FULL-LUFFING TOWER CRANE	■Dimensions ■Tower Jib Construction	
	■Specifications	29
	■Rated loads for 25m Tower Crane ■Working Ranges ...	30
	■Rated loads for 28m Tower Crane ■Working Ranges ...	31
	■Rated loads for 31m Tower Crane ■Working Ranges ...	32
	■Rated loads for 34m Tower Crane ■Working Ranges ...	33
	■Rated loads for 37m Tower Crane ■Working Ranges ...	34
	■Rated loads for 40m Tower Crane ■Working Ranges ...	35
	■Rated loads for 43m Tower Crane ■Working Ranges ...	36
	TOWER/CRAWLER CRANE	■Crane Ratings (Main Boom in 360° Working Area)
■Crane Ratings (Auxiliary Jib in 360° Working Area)		38
■Crane Ratings (Main Boom with Auxiliary Jib in 360° Working Area)		39
■Crane Ratings (Jib in 360° Working Area)		40
■Crane Ratings (Main Boom with Jib in 360° Working Area)		42
■Tower Boom Construction ■Tower Jib Construction		
■Tower/Crawler Crane Construction ■Crane Jib Construction		
■Component Weights and Dimensions for Transport	44-45	
CLAMSHELL	■Dimensions ■Specifications	
	■Working Ranges ■Clamshell Bucket	46
TECHNICAL DATA	■Standard and Optional Equipment	47-48

Note : All "ton" described in this catalog represent metric tons.

■Dimensions

Unit:mm



Dimensions shown in () are with tracks retracted.

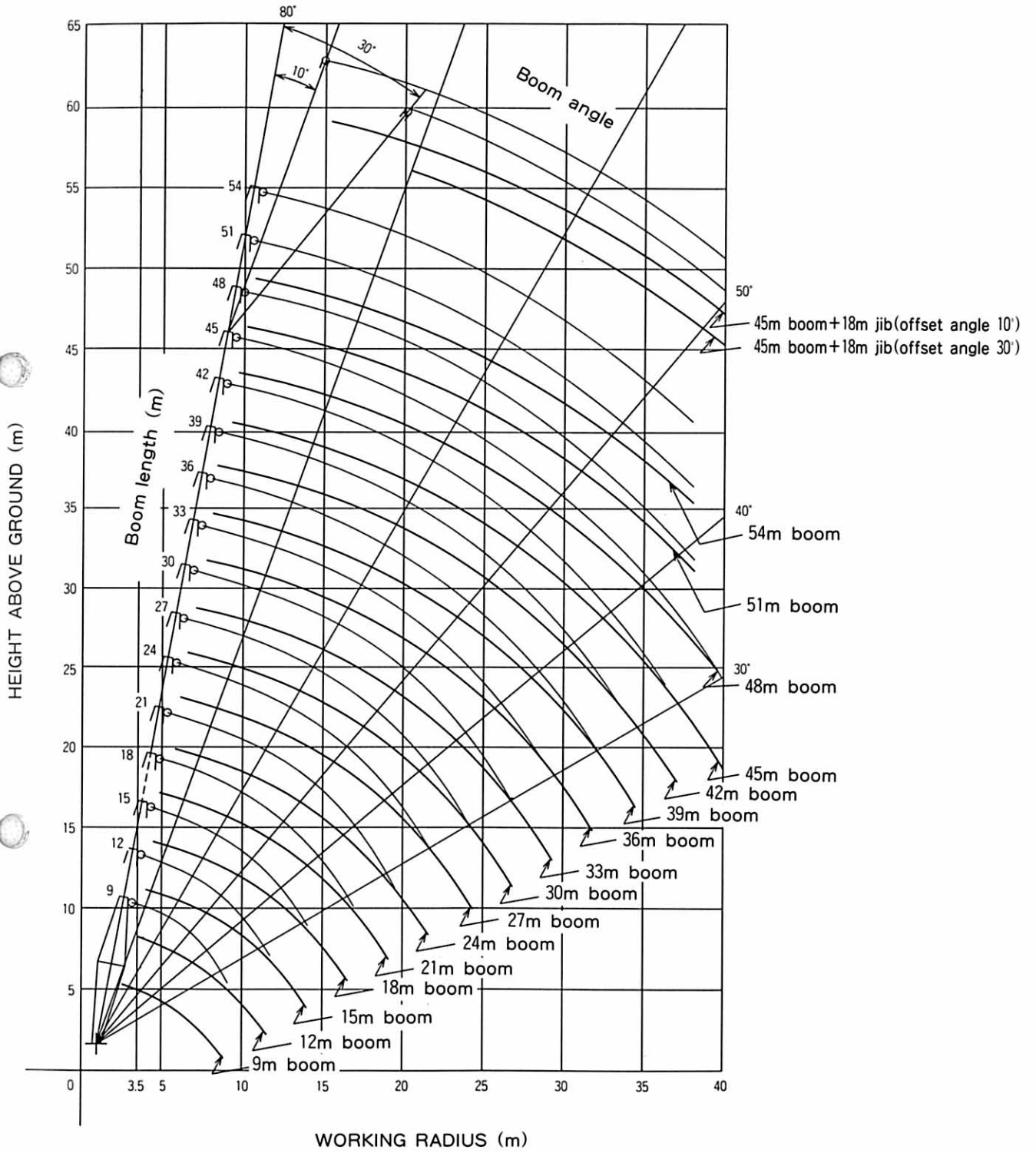
■Specifications

Maximum rated load	ton × m	70 × 3.7
Basic boom length	m	9
Max. boom length	m	54
Jib length	m	9~18
Max. boom with jib length	m	45 + 18
Main hoist drum	m/min	* 100/65/32
Aux. hoist drum	m/min	* 100/65/32
Boom hoist drum	m/min	* 53
Swing speed	min ⁻¹ (rpm)	3.0(3.0)
Travel speed	km/h	* 1.3/0.9
Gradeability	%(')	40(22)
Engine model		Hino H07CT
Rated power	kW/min ⁻¹ (PS/rpm)	132.4/2 000(180/2 000)
Ground pressure	kPa(kgf/cm ²)	77.6(0.79)
Operating weight	ton	64.9 (Equipped with 9m boom and 70ton capacity hook)

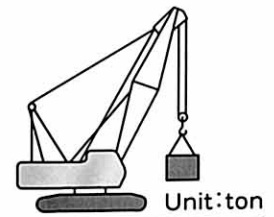
NOTE: Data expressed above are in SI units(International System of Unit), followed by data in conventional units in ().

*Data in the crane mode will vary with the load.

■ Working Ranges



78% Tipping Load (JIS Rating)



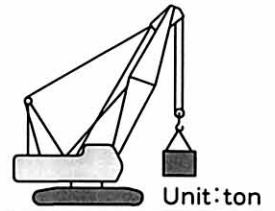
■ Crane Ratings (Main Boom in 360° Working Area)

Working Radius (m)	Boom length (m)																
	9	12	15	18	21	24	27	30	33	36	39	42	45	48	51	54	
3.5	70.00	3.7m × 70.00t															
4.0	65.00	65.00	4.2m × 61.85t														
4.5	58.35	58.15	57.95	4.7m × 55.45t													
5.0	52.10	51.95	51.85	51.80	5.3m × 47.05t												
5.5	44.80	44.70	44.55	44.45	44.35	5.8m × 40.80t											
6.0	39.30	39.15	39.00	38.90	38.80	38.75	6.4m × 35.15t	6.9m × 31.35t									
7.0	31.45	31.30	31.15	31.05	30.95	30.85	30.80	30.70	7.5m × 27.70t								
8.0	25.05	25.95	25.80	25.70	25.60	25.50	25.45	25.35	25.25	25.20	8.6m × 22.60t						
9.0	19.30	22.15	21.95	21.90	21.75	21.65	21.60	21.50	21.40	21.35	21.20	9.1m × 19.50t	9.7m × 18.90t				
10.0		19.30	19.10	19.00	18.85	18.75	18.70	18.60	18.45	18.40	18.30	18.20	18.10	10.2m × 17.50t	10.7m × 16.20t	11.3m × 13.00t	
12.0		11.6m × 15.20t	15.05	14.95	14.75	14.65	14.60	14.50	14.35	14.30	14.20	14.10	14.00	13.90	13.75	13.00	
14.0			12.35	12.20	12.05	11.95	11.90	11.75	11.60	11.55	11.40	11.35	11.25	11.10	11.00	10.95	
16.0			14.2m × 12.15t	10.30	10.10	10.00	9.90	9.80	9.65	9.60	9.45	9.40	9.30	9.15	9.00	9.00	
18.0				16.8m × 9.65t	8.65	8.55	8.45	8.30	8.20	8.15	7.95	7.90	7.80	7.65	7.50	7.50	
20.0					19.4m × 7.85t	7.40	7.30	7.20	7.05	7.00	6.80	6.75	6.65	6.50	6.35	6.35	
22.0						6.50	6.40	6.25	6.15	6.05	5.90	5.80	5.70	5.55	5.45	5.40	
24.0							5.70	5.55	5.40	5.30	5.15	5.05	4.95	4.80	4.70	4.65	
26.0								24.5m × 5.50t	4.90	4.75	4.70	4.55	4.45	4.35	4.20	4.05	3.95
28.0									27.2m × 4.60t	4.25	4.15	4.00	3.90	3.80	3.60	3.45	3.40
30.0										29.8m × 3.85t	3.70	3.55	3.45	3.30	3.10	2.95	2.85
32.0											3.35	3.15	3.00	2.85	2.65	2.50	2.40
34.0											32.4m × 3.25t	2.80	2.65	2.50	2.30	2.10	2.05
36.0												35.0m × 2.60t	2.30	2.15	1.95	1.80	1.70
38.0													37.6m × 2.05t	1.85	1.65	1.50	1.40
40.0														1.60	1.40		

- NOTES
- The rated loads shown do not exceed 78% of tipping load with the machine on firm level ground, and are not less than 1.15 times over-front stability stipulated by the mobile crane construction standards.
 - To calculate the maximum load that can actually be lifted, deduct weight of all lifting accessories, such as main hook, from figures shown above.
 - Working radius is the horizontal distance from the swing center to the center of gravity of a lifted load.
 - The counterweight is 23.8ton.
 - Be sure to fully extend the side frames before operating the machine.
 - Correlation between the number of falls, maximum rated loads, hook weights are shown in the table below.

Hook capacity (t)	Hook weight (t)	Maximum rated load (t)									
		10	9	8	7	6	5	4	3	2	1
70.0	0.80	70.0	58.5	52.0	45.5	39.0	32.5	26.0	19.5	13.0	—
40.0	0.41				40.0	39.0	32.5	26.0	19.5	13.0	—
15.0	0.36								15.0	13.0	—
6.5	0.18										6.5

75% Tipping Load(PCSA Rating)



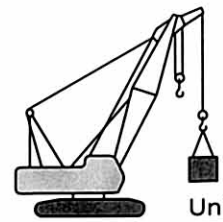
■Crane Ratings(Main Boom in 360° Working Area)

Working Radius (m)	Boom length(m)																
	9	12	15	18	21	24	27	30	33	36	39	42	45	48	51	54	
3.5	70.00	3.7m×70.00t															
4.0	65.00	65.00	4.2m×61.85t														
4.5	58.35	58.15	57.95	4.7m×53.25t													
5.0	50.10	49.95	49.85	49.80	5.3m×42.25t												
5.5	43.10	42.95	42.85	42.75	42.65	5.8m×38.20t											
6.0	37.75	37.65	37.50	37.45	37.30	37.25	6.4m×33.80t	6.9m×29.55t									
7.0	30.25	30.10	29.95	29.85	29.75	29.65	29.60	29.55	7.5m×26.60t								
8.0	25.05	24.95	24.80	24.70	24.60	24.50	24.45	24.40	24.25	23.80	8.6m×21.75t						
9.0	19.30	21.30	21.15	21.05	20.90	20.80	20.75	20.65	20.55	20.50	20.40	9.1m×19.50t	9.7m×18.20t				
10.0		18.55	18.35	18.25	18.10	18.00	17.95	17.85	17.75	17.70	17.60	17.50	17.45	10.2m×16.80t	10.7m×15.40t	11.3m×13.00t	
12.0		11.6m×15.20t	14.45	14.35	14.20	14.10	14.05	13.95	13.80	13.75	13.65	13.55	13.45	13.35	13.20	13.00	
14.0			11.90	11.75	11.60	11.50	11.40	11.30	11.20	11.15	11.00	10.90	10.80	10.70	10.55	10.55	
16.0			14.2m×11.65t	9.90	9.70	9.60	9.55	9.40	9.30	9.25	9.10	9.00	8.90	8.80	8.65	8.65	
18.0				16.8m×9.30t	8.35	8.20	8.15	8.00	7.85	7.80	7.65	7.60	7.50	7.35	7.25	7.20	
20.0					19.4m×7.55t	7.10	7.05	6.90	6.75	6.70	6.55	6.50	6.40	6.25	6.10	6.10	
22.0						6.25	6.15	6.05	5.90	5.85	5.70	5.60	5.50	5.35	5.25	5.20	
24.0							5.45	5.30	5.20	5.10	4.95	4.85	4.75	4.60	4.50	4.45	
26.0								24.6m×5.30t	4.75	4.60	4.50	4.35	4.25	4.15	4.00	3.90	3.85
28.0									27.2m×4.45t	4.10	4.00	3.85	3.75	3.65	3.50	3.40	3.35
30.0										29.8m×3.70t	3.60	3.40	3.35	3.20	3.05	2.95	2.85
32.0											3.20	3.05	2.95	2.85	2.65	2.50	2.40
34.0											32.4m×3.15t	2.75	2.65	2.50	2.30	2.10	2.05
36.0												35.0m×2.60t	2.30	2.15	1.95	1.80	1.70
38.0													37.6m×2.05t	1.85	1.65	1.50	1.40
40.0														1.60	1.40		

- NOTES
1. The rated loads shown do not exceed 75% of tipping load with the machine on firm level ground.
 2. To calculate the maximum load that can actually be lifted, deduct weight of all lifting accessories, such as main hook, from figures shown above.
 3. Working radius is the horizontal distance from the swing center to the center of gravity of a lifted load.
 4. The counterweight is 23.8ton.
 5. Be sure to fully extend the side frames before operating the machine.
 6. Correlation between the number of falls, maximum rated loads, hook weights are shown in the table below.

Hook capacity (t)	Hook weight (t)	Maximum rated load (t)									
		10	9	8	7	6	5	4	3	2	1
70.0	0.80	70.0	58.5	52.0	45.5	39.0	32.5	26.0	19.5	13.0	—
40.0	0.41				40.0	39.0	32.5	26.0	19.5	13.0	—
15.0	0.36								15.0	13.0	—
6.5	0.18										6.5

78% Tipping Load (JIS Rating)



Unit: ton

■ Crane Rating (Auxiliary Jib in 360° Working Area)

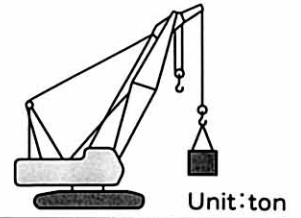
Working radius (m)	Boom Length (m)													
	12	15	18	21	24	27	30	33	36	39	42	45	48	51
4.4	6.50													
4.5	6.50													
5.0	6.50	6.50												
5.5	6.50	6.50	6.50											
6.0	6.50	6.50	6.50	6.1m×6.50t	6.6m×6.50t									
7.0	6.50	6.50	6.50	6.50	6.50	7.2m×6.50t	7.7m×6.50t							
8.0	6.50	6.50	6.50	6.50	6.50	6.50	6.50	8.3m×6.50t	8.8m×6.50t					
9.0	6.50	6.50	6.50	6.50	6.50	6.50	6.50	6.50	6.50	9.3m×6.50t	9.9m×6.50t			
10.0	6.50	6.50	6.50	6.50	6.50	6.50	6.50	6.50	6.50	6.50	6.50	10.5m×6.50t	11.0m×6.50t	11.5m×6.50t
12.0	6.50	6.50	6.50	6.50	6.50	6.50	6.50	6.50	6.50	6.50	6.50	6.50	6.50	6.50
14.0	12.7m×6.50t	6.50	6.50	6.50	6.50	6.50	6.50	6.50	6.50	6.50	6.50	6.50	6.50	6.50
16.0		15.3m×6.50t	6.50	6.50	6.50	6.50	6.50	6.50	6.50	6.50	6.50	6.50	6.50	6.50
18.0			17.9m×6.50t	6.50	6.50	6.50	6.50	6.50	6.50	6.50	6.50	6.50	6.50	6.50
20.0				6.50	6.50	6.50	6.50	6.50	6.50	6.50	6.50	6.50	6.35	6.25
22.0				20.5m×6.50t	6.40	6.30	6.15	6.00	5.95	5.80	5.70	5.60	5.45	5.30
24.0					23.1m×6.00t	5.55	5.40	5.25	5.20	5.00	4.95	4.80	4.65	4.55
26.0						25.5m×5.00t	4.80	4.65	4.55	4.40	4.30	4.20	4.00	3.85
28.0							4.25	4.10	4.00	3.85	3.75	3.60	3.40	3.25
30.0							28.3m×4.20t	3.65	3.55	3.40	3.25	3.10	2.90	2.75
32.0								30.8m×3.50t	3.15	2.95	2.80	2.65	2.45	2.30
34.0									33.4m×2.90t	2.60	2.45	2.30	2.10	1.90
36.0										2.25	2.10	1.95	1.75	1.55
38.0											1.80	1.65	1.45	
40.0											38.6m×1.75t	1.40		

- NOTES
- The rated loads shown do not exceed 78% of tipping load with the machine on firm level ground, and are not less than 1.15 times over-front stability stipulated by the mobile crane construction standards.
 - To calculate the maximum load that can actually be lifted, deduct weight of all lifting accessories, such as main hook, from figures shown above.

Hook Capacity	Weight
70.0t	0.80t
40.0t	0.41t
15.0t	0.36t
6.5t	0.18t

- Working radius is the horizontal distance from the swing center to the center of gravity of a lifted load.
- The counterweight is 23.8ton.
- Be sure to fully extend the side frames before operating the machine.
- Correlation between the number of falls, maximum rated loads, hook weights are shown in the table below.

75% Tipping Load(PCSA Rating)



■ Crane Rating(Auxiliary Jib in 360° Working Area)

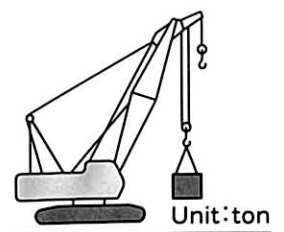
Working radius (m)	Boom Length (m)													
	12	15	18	21	24	27	30	33	36	39	42	45	48	51
4.4	6.50													
4.5	6.50													
5.0	6.50	6.50												
5.5	6.50	6.50	6.50											
6.0	6.50	6.50	6.50	6.1m×6.50t	6.6m×6.50t									
7.0	6.50	6.50	6.50	6.50	6.50	7.2m×6.50t	7.7m×6.50t							
8.0	6.50	6.50	6.50	6.50	6.50	6.50	6.50	8.3m×6.50t	8.8m×6.50t					
9.0	6.50	6.50	6.50	6.50	6.50	6.50	6.50	6.50	6.50	9.3m×6.50t	9.9m×6.50t			
10.0	6.50	6.50	6.50	6.50	6.50	6.50	6.50	6.50	6.50	6.50	6.50	10.5m×6.50t	11.0m×6.50t	11.5m×6.50t
12.0	6.50	6.50	6.50	6.50	6.50	6.50	6.50	6.50	6.50	6.50	6.50	6.50	6.50	6.50
14.0	12.7m×6.50t	6.50	6.50	6.50	6.50	6.50	6.50	6.50	6.50	6.50	6.50	6.50	6.50	6.50
16.0		15.3m×6.50t	6.50	6.50	6.50	6.50	6.50	6.50	6.50	6.50	6.50	6.50	6.50	6.50
18.0			17.9m×6.50t	6.50	6.50	6.50	6.50	6.50	6.50	6.50	6.50	6.50	6.50	6.50
20.0				6.50	6.50	6.50	6.50	6.50	6.50	6.45	6.35	6.25	6.10	6.00
22.0				20.5m×6.50t	6.15	6.05	5.90	5.80	5.70	5.55	5.45	5.35	5.20	5.10
24.0					23.1m×5.75t	5.35	5.20	5.05	5.00	4.80	4.75	4.65	4.50	4.35
26.0						25.5m×4.90t	4.60	4.45	4.40	4.20	4.15	4.00	3.85	3.75
28.0							4.10	3.95	3.85	3.70	3.60	3.50	3.35	3.20
30.0							28.3m×4.05t	3.55	3.45	3.25	3.20	3.05	2.90	2.75
32.0								30.8m×3.40t	3.05	2.90	2.80	2.65	2.45	2.30
34.0									33.4m×2.85t	2.60	2.45	2.30	2.10	1.90
36.0										2.25	2.10	1.95	1.75	1.55
38.0											1.80	1.65	1.45	
40.0											38.6m×1.75t	1.40		

- NOTES
- The rated loads shown do not exceed 75% of tipping load with the machine on firm level ground.
 - To calculate the maximum load that can actually be lifted, deduct weight of all lifting accessories, such as main hook, from figures shown above.

Hook Capacity	Weight
70.0t	0.80t
40.0t	0.41t
15.0t	0.36t
6.5t	0.18t

- Working radius is the horizontal distance from the swing center to the center of gravity of a lifted load.
- The counterweight is 23.8ton.
- Be sure to fully extend the side frames before operating the machine.
- Correlation between the number of falls, maximum rated loads, hook weights are shown in the table below.

78% Tipping Load(JIS Rating)



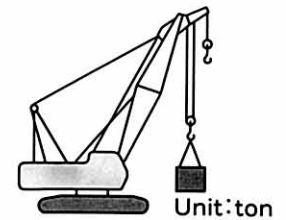
■Crane Ratings(Main boom with Auxiliary Jib in 360° Working Area)

Working radius (m)	Boom Length(m)													
	12	15	18	21	24	27	30	33	36	39	42	45	48	51
3.6	70.00													
4.0	64.60	4.2m×61.45t												
4.5	57.75	57.55	4.7m×55.05t											
5.0	51.55	51.45	51.40	5.3m×46.65t										
5.5	44.30	44.15	44.05	43.95	5.8m×40.40t									
6.0	38.75	38.60	38.50	38.40	38.35	6.4m×34.75t	6.9m×30.95t							
7.0	30.90	30.75	30.65	30.55	30.45	30.40	30.30	7.5m×27.30t						
8.0	25.55	25.40	25.30	25.20	25.10	25.05	24.95	24.85	24.80	8.6m×22.20t				
9.0	21.75	21.55	21.50	21.35	21.25	21.20	21.10	21.00	20.95	20.80	9.1m×19.50t	9.7m×18.50t		
10.0	18.90	18.70	18.60	18.45	18.35	18.30	18.20	18.05	18.00	17.90	17.80	17.70	10.2m×17.10t	10.7m×15.80t
12.0	11.6m×14.80t	14.65	14.55	14.35	14.25	14.20	14.10	13.95	13.90	13.80	13.70	13.60	13.50	13.35
14.0		11.95	11.80	11.65	11.55	11.50	11.35	11.20	11.15	11.00	10.95	10.85	10.70	10.60
16.0		14.2m×11.75t	9.90	9.70	9.60	9.50	9.40	9.25	9.20	9.05	9.00	8.90	8.75	8.60
18.0			16.8m×9.25t	8.25	8.15	8.05	7.90	7.80	7.75	7.55	7.50	7.40	7.25	7.10
20.0				19.4m×7.45t	7.00	6.90	6.80	6.65	6.60	6.40	6.35	6.25	6.10	5.95
22.0					6.10	6.00	5.85	5.75	5.65	5.50	5.40	5.30	5.15	5.05
24.0						5.30	5.15	5.00	4.90	4.75	4.65	4.55	4.40	4.30
26.0						24.6m×5.10t	4.50	4.35	4.30	4.15	4.05	3.95	3.80	3.65
28.0							27.2m×4.20t	3.85	3.75	3.60	3.50	3.40	3.20	3.05
30.0								29.8m×3.45t	3.30	3.15	3.05	2.90	2.70	2.55
32.0									2.95	2.75	2.60	2.45	2.25	2.10
34.0									32.4m×2.85t	2.40	2.25	2.10	1.90	1.70
36.0										35.0m×2.20t	1.90	1.75	1.55	1.40
38.0											37.6m×1.65t	1.45		

- NOTES
- The rated loads shown do not exceed 78% of tipping load with the machine on firm level ground, and are not less than 1.15 times over-front stability stipulated by the mobile crane construction standards.
 - To calculate the maximum load that can actually be lifted, deduct weight of all lifting accessories, such as main hook, from figures shown above.
 - Working radius is the horizontal distance from the swing center to the center of gravity of a lifted load.
 - The counterweight is 23.8ton.
 - Be sure to fully extend the side frames before operating the machine.
 - Correlation between the number of falls, maximum rated loads, hook weights are shown in the table below.

Hook capacity (t)	Hook weight (t)	Maximum rated load (t)									
		10	9	8	7	6	5	4	3	2	1
70.0	0.80	70.0	58.5	52.0	45.5	39.0	32.5	26.0	19.5	13.0	—
40.0	0.41				40.0	39.0	32.5	26.0	19.5	13.0	—
15.0	0.36								15.0	13.0	—
6.5	0.18										6.5

75% Tipping Load(PCSA Rating)



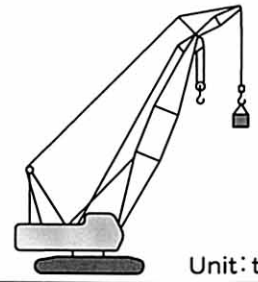
■ Crane Ratings(Main boom with Auxiliary Jib in 360° Working Area)

Working radius (m)	Boom Length(m)														
	12	15	18	21	24	27	30	33	36	39	42	45	48	51	
3.7	70.00														
4.0	64.60	4.2m×61.45t													
4.5	57.75	57.55	4.8m×52.85t												
5.0	49.55	49.45	49.40	5.3m×44.85t											
5.5	42.55	42.40	42.35	42.25	5.8m×37.80t										
6.0	37.25	37.10	37.00	36.90	36.85	6.4m×33.35t	6.9m×29.15t								
7.0	29.70	29.55	29.45	29.35	29.25	29.20	29.15	7.5m×26.20t							
8.0	24.55	24.40	24.30	24.20	24.10	24.05	23.95	23.85	23.40	8.6m×21.35t					
9.0	20.90	20.70	20.65	20.50	20.40	20.35	20.25	20.15	20.10	20.00	9.1m×19.30t	9.7m×17.80t			
10.0	18.15	17.95	17.85	17.70	17.60	17.55	17.45	17.35	17.30	17.15	17.10	17.00	10.2m×16.40t	10.7m×15.00t	
12.0	11.5m×14.80t	14.05	13.95	13.80	13.70	13.65	13.55	13.40	13.35	13.20	13.15	13.05	12.95	12.80	
14.0		11.45	11.35	11.20	11.05	11.00	10.90	10.75	10.70	10.60	10.50	10.40	10.30	10.15	
16.0		14.2m×11.25t	9.50	9.30	9.20	9.15	9.00	8.90	8.85	8.70	8.60	8.50	8.40	8.25	
18.00			16.8m×8.90t	7.95	7.80	7.70	7.60	7.45	7.40	7.25	7.20	7.10	6.95	6.85	
20.0				19.4m×7.15t	6.70	6.65	6.50	6.35	6.30	6.15	6.10	6.00	5.85	5.70	
22.0					5.85	5.75	5.60	5.50	5.40	5.25	5.20	5.10	4.95	4.80	
24.0						5.05	4.90	4.75	4.70	4.55	4.45	4.35	4.20	4.10	
26.0							24.5m×4.90t	4.35	4.20	4.10	3.95	3.85	3.75	3.60	3.50
28.0								27.2m×4.00t	3.70	3.60	3.45	3.35	3.25	3.10	2.95
30.0									29.8m×3.30t	3.15	3.00	2.90	2.80	2.65	2.55
32.0										2.80	2.65	2.55	2.45	2.25	2.10
34.0										32.4m×2.75t	2.30	2.20	2.10	1.90	1.70
36.0											35.0m×2.20t	1.90	1.75	1.55	1.35
38.0												37.6m×1.65t	1.45		

- NOTES
1. The rated loads shown do not exceed 75% of tipping load with the machine on firm level ground.
 2. To calculate the maximum load that can actually be lifted, deduct weight of all lifting accessories, such as main hook, from figures shown above.
 3. Working radius is the horizontal distance from the swing center to the center of gravity of a lifted load.
 4. The counterweight is 23.8ton.
 5. Be sure to fully extend the side frames before operating the machine.
 6. Correlation between the number of falls, maximum rated loads, hook weights are shown in the table below.

Hook capacity (t)	Hook weight (t)	Maximum rated load (t)													
		10	9	8	7	6	5	4	3	2	1				
70.0	0.80	70.0	58.5	52.0	45.5	39.0	32.5	26.0	19.5	13.0	—				
40.0	0.41				40.0	39.0	32.5	26.0	19.5	13.0	—				
15.0	0.36								15.0	13.0	—				
6.5	0.18														6.5

78% Tipping Load (JIS Rating)



■ Crane Ratings (Jib in 360° Working Area) (1)

Main Boom Length(m)	27					
Jib Boom Length(m)	9.0		13.5		18.0	
Offset Angle (°)	10	30	10	30	10	30
Working Radius(m)	10	30	10	30	10	30
9.4	6.50					
10.0	6.50		11.0m × 6.50t			
12.0	6.50	12.1m × 6.50t	6.50		12.6m × 5.90t	
14.0	6.50	6.50	6.50	15.0m × 6.50t	5.70	
16.0	6.50	6.50	6.50	6.50	5.40	17.9m × 4.30t
18.0	6.50	6.50	6.50	6.25	5.15	4.30
20.0	6.50	6.50	6.50	5.85	4.95	4.15
22.0	6.45	6.50	6.50	5.55	4.75	4.05
24.0	5.70	5.80	5.85	5.25	4.55	3.95
26.0	5.05	5.15	5.20	5.00	4.40	3.85
28.0	4.50	4.55	4.65	4.80	4.25	3.65
30.0	4.05	4.10	4.20	4.30	4.10	3.50
32.0	3.65	3.65	3.80	3.85	3.90	3.35
34.0	33.3m × 3.45t	33.8m × 3.35t	3.45	3.50	3.50	3.20
36.0			3.10	3.15	3.20	3.10
38.0			37.5m × 2.90t	2.85	2.95	3.00
40.0				38.3m × 2.80t	2.70	2.75
42.0					41.7m × 2.50t	2.50
44.0						42.8m × 2.40t

Unit: ton

Main Boom Length(m)	30					
Jib Boom Length(m)	9.0		13.5		18.0	
Offset Angle (°)	10	30	10	30	10	30
Working Radius(m)	10	30	10	30	10	30
10.0	6.50		11.5m × 6.50t			
12.0	6.50	12.7m × 6.50t	6.50		13.1m × 5.90t	
14.0	6.50	6.50	6.50	15.6m × 6.50t	5.80	
16.0	6.50	6.50	6.50	6.50	5.50	
18.0	6.50	6.50	6.50	6.35	5.25	18.5m × 4.30t
20.0	6.50	6.50	6.50	6.00	5.05	4.20
22.0	6.35	6.50	6.50	5.70	4.85	4.10
24.0	5.55	5.70	5.75	5.40	4.65	4.00
26.0	4.90	5.00	5.10	5.15	4.50	3.90
28.0	4.40	4.45	4.55	4.70	4.35	3.75
30.0	3.90	3.95	4.05	4.20	4.15	3.60
32.0	3.50	3.55	3.65	3.75	3.75	3.45
34.0	3.15	3.20	3.30	3.40	3.40	3.30
36.0	35.9m × 2.85t	2.85	3.00	3.05	3.05	3.20
38.0		36.4m × 2.80t	2.70	2.75	2.80	2.90
40.0			2.40	2.45	2.55	2.60
42.0			40.1m × 2.40t	40.9m × 2.30t	2.25	2.35
44.0					2.05	2.10
46.0					44.3m × 2.00t	45.4m × 1.90t

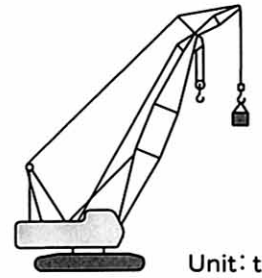
Unit: ton

- NOTES
- The rated loads shown do not exceed 78% of tipping load with the machine on firm level ground, and are not less than 1.15 times over-front stability stipulated by the mobile crane construction standards.
 - To calculate the maximum load that can actually be lifted, deduct weight of all lifting accessories, such as main hook, from figures shown above.

Hook Capacity	Weight
70.0t Hook	0.80t
40.0t Hook	0.41t
15.0t Hook	0.36t
6.5t Hook	0.18t

- Working radius is the horizontal distance from the swing center to the center of gravity of a lifted load.
- The counterweight is 23.8ton.
- Be sure to fully extend the side frames before operating the machine.
- Correlation between the number of falls, maximum rated loads, hook weights are shown in the table below.

78% Tipping Load(JIS Rating)



■ Crane Ratings(Jib in 360° Working Area) (2)

Main Boom Length(m)	33					
Jib Boom Length(m)	9.0		13.5		18.0	
Offset Angle(°)	10	30	10	30	10	30
Working Radius(m)	10.0	10.5m×6.50t	12.1m×6.50t	13.7m×5.90t	16.1m×6.50t	19.0m×4.30t
12.0	6.50	6.50	6.50	6.50	6.50	5.85
14.0	6.50	6.50	6.50	6.50	6.50	5.60
16.0	6.50	6.50	6.50	6.50	6.50	5.35
18.0	6.50	6.50	6.50	6.50	6.50	5.15
20.0	6.50	6.50	6.50	6.50	6.50	4.95
22.0	6.20	6.40	6.40	6.40	6.15	4.75
24.0	5.40	5.55	5.60	5.55	5.85	4.60
26.0	4.80	4.90	4.95	4.95	5.60	4.45
28.0	4.25	4.35	4.40	4.40	5.40	4.30
30.0	3.75	3.85	3.90	3.90	5.20	4.15
32.0	3.35	3.40	3.50	3.50	5.00	4.00
34.0	3.00	3.05	3.15	3.15	4.85	3.90
36.0	2.65	2.70	2.85	2.85	4.70	3.80
38.0	2.35	2.35	2.50	2.50	4.55	3.70
40.0	38.5m×2.30t	39.0m×2.20t	2.25	2.30	4.40	3.60
42.0			2.00	2.00	4.25	3.50
44.0			42.7m×1.90t	43.5m×1.85t	4.10	3.40
46.0					4.00	3.30
48.0					46.9m×1.60t	3.20

Unit: ton

Main Boom Length(m)	36					
Jib Boom Length(m)	9.0		13.5		18.0	
Offset Angle(°)	10	30	10	30	10	30
Working Radius(m)	10.0	11.0m×6.50t	12.6m×6.50t	14.2m×5.90t	16.7m×6.50t	19.6m×4.25t
12.0	6.50	6.50	6.50	6.50	6.50	5.65
14.0	6.50	6.50	6.50	6.50	6.50	5.45
16.0	6.50	6.50	6.50	6.50	6.50	5.25
18.0	6.50	6.50	6.50	6.50	6.50	5.05
20.0	6.50	6.50	6.50	6.50	6.25	4.85
22.0	6.10	6.30	6.30	6.30	6.05	4.65
24.0	5.35	5.50	5.50	5.50	5.85	4.45
26.0	4.70	4.85	4.85	4.85	5.65	4.25
28.0	4.15	4.25	4.30	4.30	5.45	4.05
30.0	3.70	3.80	3.85	3.85	5.25	3.85
32.0	3.25	3.35	3.40	3.40	5.05	3.65
34.0	2.90	2.95	3.05	3.05	4.85	3.45
36.0	2.55	2.60	2.70	2.70	4.65	3.25
38.0	2.25	2.25	2.40	2.40	4.45	3.05
40.0	1.95	1.95	2.10	2.20	4.25	2.85
42.0	41.1m×1.80t	41.6m×1.75t	1.85	1.95	4.05	2.65
44.0			1.65	1.70	3.85	2.45
46.0			45.3m×1.50t	1.45	3.65	2.25
48.0				46.1m×1.45t	3.45	2.05

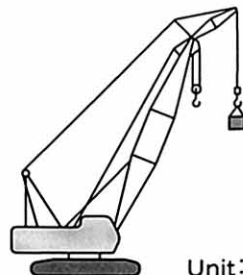
Unit: ton

- NOTES
- The rated loads shown do not exceed 78% of tipping load with the machine on firm level ground, and are not less than 1.15 times over-front stability stipulated by the mobile crane construction standards.
 - To calculate the maximum load that can actually be lifted, deduct weight of all lifting accessories, such as main hook, from figures shown above.

Hook Capacity	Weight
70.0t Hook	0.80t
40.0t Hook	0.41t
15.0t Hook	0.36t
6.5t Hook	0.18t

- Working radius is the horizontal distance from the swing center to the center of gravity of a lifted load.
- The counterweight is 23.8ton.
- Be sure to fully extend the side frames before operating the machine.
- Correlation between the number of falls, maximum rated loads, hook weights are shown in the table below.

78% Tipping Load(JIS Rating)



■ Crane Ratings(Jib in 360° Working Area) (3)

Unit: ton

Main Boom Length(m)	39					
Jib Boom Length(m)	9.0		13.5		18.0	
Offset Angle(°)	10	30	10	30	10	30
Working Radius(m)						
11.6	6.50					
12.0	6.50		13.2m×6.50t			
14.0	6.50	14.3m×6.50t	6.50		14.7m×5.90t	
16.0	6.50	6.50	6.50	17.2m×6.50t	5.75	
18.0	6.50	6.50	6.50	6.50	5.50	
20.0	6.50	6.50	6.50	6.40	5.30	20.1m×4.25t
22.0	5.95	6.20	6.15	6.10	5.10	4.15
24.0	5.20	5.40	5.35	5.70	4.95	4.05
26.0	4.55	4.70	4.70	5.00	4.75	4.00
28.0	4.00	4.15	4.15	4.40	4.30	3.90
30.0	3.50	3.65	3.70	3.90	3.80	3.85
32.0	3.10	3.20	3.25	3.45	3.40	3.65
34.0	2.70	2.80	2.85	3.05	3.00	3.25
36.0	2.35	2.40	2.50	2.70	2.65	2.90
38.0	2.00	2.10	2.20	2.35	2.35	2.60
40.0	1.75	1.80	1.90	2.05	2.05	2.25
42.0	1.50	1.55	1.65	1.75	1.80	1.95
44.0	43.7m×1.30t	1.30	1.45	1.50	1.55	1.70
46.0				1.30	1.35	1.50

Unit: ton

Main Boom Length(m)	42					
Jib Boom Length(m)	9.0		13.5		18.0	
Offset Angle(°)	10	30	10	30	10	30
Working Radius(m)						
12.0	12.1m×6.50t		13.7m×6.50t			
14.0	6.50	14.8m×6.50t	6.50		15.3m×5.90t	
16.0	6.50	6.50	6.50	17.8m×6.50t	5.80	
18.0	6.50	6.50	6.50	6.50	5.60	
20.0	6.50	6.50	6.50	6.50	5.35	20.7m×4.25t
22.0	5.90	6.15	6.10	6.20	5.20	4.20
24.0	5.10	5.30	5.30	5.65	5.00	4.10
26.0	4.45	4.65	4.65	4.95	4.75	4.00
28.0	3.90	4.05	4.05	4.35	4.20	3.95
30.0	3.40	3.55	3.60	3.85	3.70	3.85
32.0	2.95	3.10	3.15	3.40	3.30	3.60
34.0	2.55	2.65	2.75	2.95	2.90	3.20
36.0	2.20	2.30	2.40	2.60	2.55	2.85
38.0	1.90	1.95	2.05	2.25	2.20	2.50
40.0	1.60	1.65	1.80	1.95	1.90	2.15
42.0	1.35	1.40	1.55	1.65	1.65	1.85
44.0			1.30	1.40	1.45	1.60
46.0						1.35

NOTES 1. The rated loads shown do not exceed 78% of tipping load with the machine on firm level ground, and are not less than 1.15 times over-front stability stipulated by the mobile crane construction standards.

2. To calculate the maximum load that can actually be lifted, deduct weight of all lifting accessories, such as main hook, from figures shown above.

Hook Capacity	Weight
70.0t Hook	0.80t
40.0t Hook	0.41t
15.0t Hook	0.36t
6.5t Hook	0.18t

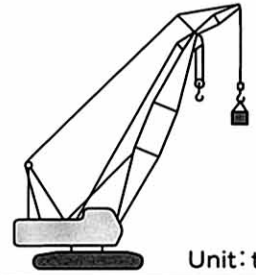
3. Working radius is the horizontal distance from the swing center to the center of gravity of a lifted load.

4. The counterweight is 23.8ton.

5. Be sure to fully extend the side frames before operating the machine.

6. Correlation between the number of falls, maximum rated loads, hook weights are shown in the table below.

78% Tipping Load(JIS Rating)



Unit: ton

■ Crane Ratings(Jib in 360° Working Area)(4)

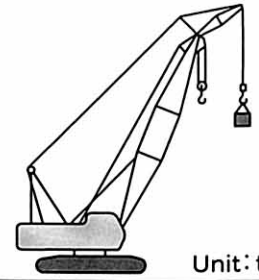
Main Boom Length(m)	45					
Jib Boom Length(m)	9.0		13.5		18.0	
Offset Angle(°)	10	30	10	30	10	30
Working Radius(m)						
12.7	6.50					
14.0	6.50	15.4m×6.50t	14.3m×6.50t		15.8m×5.90t	
16.0	6.50	6.50	6.50		5.85	
18.0	6.50	6.50	6.50	18.3m×6.50t	5.65	
20.0	6.50	6.50	6.50	6.50	5.45	21.2m×4.25t
22.0	5.75	6.05	5.95	6.30	5.25	4.20
24.0	5.00	5.20	5.20	5.55	5.10	4.10
26.0	4.35	4.55	4.50	4.85	4.65	4.05
28.0	3.80	3.95	3.95	4.25	4.10	3.95
30.0	3.25	3.45	3.45	3.75	3.60	3.90
32.0	2.80	2.95	3.00	3.30	3.15	3.50
34.0	2.40	2.55	2.60	2.85	2.75	3.10
36.0	2.05	2.15	2.25	2.45	2.40	2.70
38.0	1.75	1.85	1.90	2.10	2.05	2.35
40.0	1.45	1.55	1.65	1.80	1.75	2.05
42.0			1.40	1.55	1.50	1.75
44.0					1.30	1.50

- NOTES
- The rated loads shown do not exceed 78% of tipping load with the machine on firm level ground, and are not less than 1.15 times over-front stability stipulated by the mobile crane construction standards.
 - To calculate the maximum load that can actually be lifted, deduct weight of all lifting accessories, such as main hook, from figures shown above.

Hook Capacity	Weight
70.0t Hook	0.80t
40.0t Hook	0.41t
15.0t Hook	0.36t
6.5t Hook	0.18t

- Working radius is the horizontal distance from the swing center to the center of gravity of a lifted load.
- The counterweight is 23.8ton.
- Be sure to fully extend the side frames before operating the machine.
- Correlation between the number of falls, maximum rated loads, hook weights are shown in the table below.

75% Tipping Load(PCSA Rating)



Unit: ton

Crane Ratings(Jib in 360° Working Area) (1)

Main Boom Length(m)	27					
Jib Boom Length(m)	9.0		13.5		18.0	
Offset Angle(°)	10	30	10	30	10	30
Working Radius(m)						
9.4	6.50					
10.0	6.50		11.0m×6.50t			
12.0	6.50	12.1m×6.50t	6.50		12.6m×5.90t	
14.0	6.50	6.50	6.50	15.0m×6.50t	5.70	
16.0	6.50	6.50	6.50	6.50	5.40	17.9m×4.30t
18.0	6.50	6.50	6.50	6.25	5.15	4.30
20.0	6.50	6.50	6.50	5.85	4.95	4.15
22.0	6.20	6.40	6.40	5.55	4.75	4.05
24.0	5.50	5.60	5.65	5.25	4.55	3.95
26.0	4.85	4.95	5.00	5.00	4.40	3.85
28.0	4.35	4.45	4.50	4.65	4.25	3.65
30.0	3.90	3.95	4.05	4.15	4.10	3.50
32.0	3.50	3.55	3.65	3.75	3.75	3.35
34.0	3.33m×3.30t	33.8m×3.25t	3.30	3.40	3.40	3.20
36.0			3.00	3.05	3.10	3.10
38.0			37.5m×2.80t	2.75	2.80	2.90
40.0				38.3m×2.70t	2.60	2.65
42.0					41.7m×2.40t	2.40
44.0						42.8m×2.30t

Unit: ton

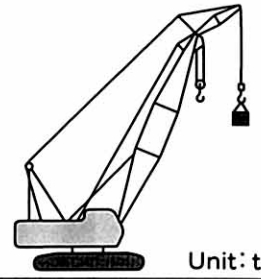
Main Boom Length(m)	30					
Jib Boom Length(m)	9.0		13.5		18.0	
Offset Angle(°)	10	30	10	30	10	30
Working Radius(m)						
10.0	6.50		11.5m×6.50t			
12.0	6.50	12.7m×6.50t	6.50		13.1m×5.90t	
14.0	6.50	6.50	6.50	15.6m×6.50t	5.80	
16.0	6.50	6.50	6.50	6.50	5.50	
18.0	6.50	6.50	6.50	6.35	5.25	18.5m×4.30t
20.0	6.50	6.50	6.50	6.00	5.05	4.20
22.0	6.10	6.30	6.25	5.70	4.85	4.10
24.0	5.35	5.50	5.50	5.40	4.65	4.00
26.0	4.75	4.85	4.90	5.10	4.50	3.90
28.0	4.20	4.30	4.35	4.55	4.35	3.75
30.0	3.75	3.85	3.90	4.05	4.00	3.60
32.0	3.35	3.45	3.50	3.65	3.60	3.45
34.0	3.05	3.10	3.15	3.30	3.25	3.30
36.0	35.9m×2.75t	2.75	2.85	2.95	2.95	3.10
38.0		36.4m×2.70t	2.60	2.65	2.70	2.80
40.0			40.1m×2.35t	2.40	2.45	2.55
42.0				40.9m×2.30t	2.25	2.30
44.0					2.05	2.10
46.0					44.3m×2.00t	45.4m×1.90t

- NOTES
- The rated loads shown do not exceed 75% of tipping load with the machine on firm level ground.
 - To calculate the maximum load that can actually be lifted, deduct weight of all lifting accessories, such as main hook, from figures shown above.

Hook Capacity	Weight
70.0t Hook	0.80t
40.0t Hook	0.41t
15.0t Hook	0.36t
6.5t Hook	0.18t

- Working radius is the horizontal distance from the swing center to the center of gravity of a lifted load.
- The counterweight is 23.8ton.
- Be sure to fully extend the side frames before operating the machine.
- Correlation between the number of falls, maximum rated loads, hook weights are shown in the table below.

75% Tipping Load(PCSA Rating)



Crane Ratings(Jib in 360° Working Area)(2)

Unit: ton

Main Boom Length(m)	33					
Jib Boom Length(m)	9.0		13.5		18.0	
Offset Angle(°)	10	30	10	30	10	30
Working Radius(m)						
10.5	6.50					
12.0	6.50	13.2m×6.50t	12.1m×6.50t		13.7m×5.90t	
14.0	6.50	6.50	6.50		5.85	
16.0	6.50	6.50	6.50	16.1m×6.50t	5.60	
18.0	6.50	6.50	6.50	6.50	5.35	19.0m×4.30t
20.0	6.50	6.50	6.50	6.15	5.15	4.20
22.0	5.95	6.20	6.15	5.85	4.95	4.10
24.0	5.20	5.40	5.40	5.55	4.75	4.00
26.0	4.60	4.75	4.75	5.00	4.60	3.95
28.0	4.05	4.20	4.20	4.45	4.35	3.85
30.0	3.60	3.75	3.75	3.95	3.90	3.70
32.0	3.25	3.30	3.40	3.55	3.50	3.55
34.0	2.90	2.95	3.05	3.15	3.15	3.35
36.0	2.60	2.65	2.75	2.85	2.85	3.00
38.0	2.35	2.35	2.45	2.55	2.55	2.70
40.0	38.5m×2.30t	39.0m×2.20t	2.25	2.30	2.30	2.45
42.0			2.00	2.00	2.10	2.20
44.0			42.7m×1.90t	43.5m×1.85t	1.85	1.95
46.0					1.65	1.70
48.0					46.9m×1.60t	1.50

Unit: ton

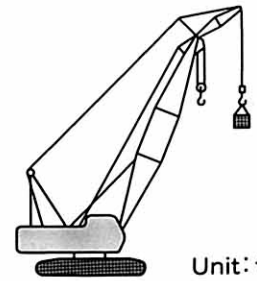
Main Boom Length(m)	36					
Jib Boom Length(m)	9.0		13.5		18.0	
Offset Angle(°)	10	30	10	30	10	30
Working Radius(m)						
11.0	6.50					
12.0	6.50	3.7m×6.50t	12.6m×6.50t		14.2m×5.90t	
14.0	6.50	6.50	6.50		5.65	
16.0	6.50	6.50	6.50	16.7m×6.50t	5.45	
18.0	6.50	6.50	6.50	6.50	5.20	19.6m×4.25t
20.0	6.50	6.50	6.50	6.25	5.20	4.25
22.0	5.90	6.10	6.05	5.95	5.05	4.15
24.0	5.15	5.35	5.30	5.60	4.85	4.05
26.0	4.50	4.70	4.70	4.95	4.70	3.95
28.0	4.00	4.15	4.15	4.40	4.25	3.90
30.0	3.55	3.65	3.70	3.90	3.80	3.75
32.0	3.15	3.25	3.30	3.45	3.40	3.60
34.0	2.80	2.90	2.95	3.10	3.05	3.30
36.0	2.50	2.60	2.65	2.80	2.75	2.95
38.0	2.25	2.25	2.35	2.50	2.45	2.65
40.0	1.95	1.95	2.10	2.20	2.20	2.40
42.0	41.1m×1.80t	41.6m×1.75t	1.85	1.95	2.00	2.15
44.0			1.65	1.70	1.75	1.85
46.0			45.3m×1.50t	46.1m×1.45t	1.55	1.65
48.0					1.35	1.40

- NOTES
1. The rated loads shown do not exceed 75% of tipping load with the machine on firm level ground.
 2. To calculate the maximum load that can actually be lifted, deduct weight of all lifting accessories, such as main hook, from figures shown above.

Hook Capacity	Weight
70.0t Hook	0.80t
40.0t Hook	0.41t
15.0t Hook	0.36t
6.5t Hook	0.18t

3. Working radius is the horizontal distance from the swing center to the center of gravity of a lifted load.
4. The counterweight is 23.8ton.
5. Be sure to fully extend the side frames before operating the machine.
6. Correlation between the number of falls, maximum rated loads, hook weights are shown in the table below.

75% Tipping Load(PCSA Rating)



■Crane Ratings(Jib in 360° Working Area)(3)

Unit: ton

Main Boom Length(m)	39					
Jib Boom Length(m)	9.0		13.5		18.0	
Offset Angle(°)	10	30	10	30	10	30
Working Radius(m)						
11.6	6.50					
12.0	6.50		13.2m×6.50t			
14.0	6.50	14.3m×6.50t	6.50		14.7m×5.90t	
16.0	6.50	6.50	6.50	17.2m×6.50t	5.75	
18.0	6.50	6.50	6.50	6.50	5.50	
20.0	6.50	6.50	6.50	6.40	5.30	20.1m×4.25t
22.0	5.75	6.00	5.95	6.10	5.10	4.15
24.0	5.00	5.20	5.15	5.50	4.95	4.05
26.0	4.35	4.55	4.55	4.85	4.65	4.00
28.0	3.85	4.00	4.00	4.25	4.15	3.90
30.0	3.40	3.55	3.55	3.80	3.65	3.85
32.0	3.00	3.10	3.15	3.35	3.25	3.55
34.0	2.65	2.75	2.80	3.00	2.90	3.20
36.0	2.35	2.40	2.50	2.65	2.60	2.85
38.0	2.00	2.10	2.20	2.35	2.35	2.55
40.0	1.75	1.80	1.90	2.05	2.05	2.25
42.0	1.50	1.55	1.65	1.75	1.80	1.95
44.0	43.7m×1.30t	1.30	1.45	1.50	1.55	1.70
46.0				1.30	1.35	1.50

Unit: ton

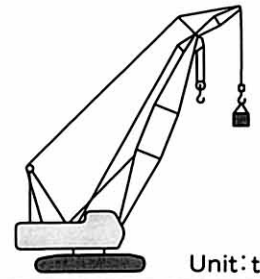
Main Boom Length(m)	42					
Jib Boom Length(m)	9.0		13.5		18.0	
Offset Angle(°)	10	30	10	30	10	30
Working Radius(m)						
12.0	12.1m×6.50t		13.7m×6.50t			
14.0	6.50	14.8m×6.50t	6.50		15.3m×5.90t	
16.0	6.50	6.50	6.50	17.8m×6.50t	5.80	
18.0	6.50	6.50	6.50	6.50	5.60	
20.0	6.50	6.50	6.50	6.50	5.35	20.7m×4.25t
22.0	5.65	5.95	5.85	6.20	5.20	4.20
24.0	4.90	5.15	5.10	5.45	5.00	4.10
26.0	4.30	4.50	4.45	4.80	4.60	4.00
28.0	3.75	3.95	3.90	4.20	4.05	3.95
30.0	3.30	3.45	3.45	3.70	3.60	3.85
32.0	2.90	3.05	3.05	3.30	3.20	3.50
34.0	2.55	2.65	2.70	2.90	2.80	3.10
36.0	2.20	2.30	2.40	2.60	2.50	2.75
38.0	1.90	1.95	2.05	2.25	2.20	2.45
40.0	1.60	1.65	1.80	1.95	1.90	2.15
42.0	1.35	1.40	1.55	1.65	1.65	1.85
44.0			1.30	1.40	1.45	1.60
46.0						1.35

- NOTES
1. The rated loads shown do not exceed 75% of tipping load with the machine on firm level ground.
 2. To calculate the maximum load that can actually be lifted, deduct weight of all lifting accessories, such as main hook, from figures shown above.

Hook Capacity	Weight
70.0t Hook	0.80t
40.0t Hook	0.41t
15.0t Hook	0.36t
6.5t Hook	0.18t

3. Working radius is the horizontal distance from the swing center to the center of gravity of a lifted load.
4. The counterweight is 23.8ton.
5. Be sure to fully extend the side frames before operating the machine.
6. Correlation between the number of falls, maximum rated loads, hook weights are shown in the table below.

75% Tipping Load(PCSA Rating)



■Crane Ratings(Jib in 360° Working Area)(4)

Unit: ton

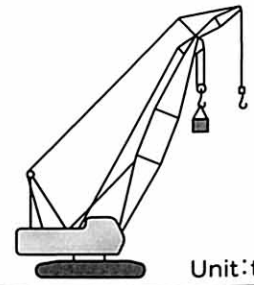
Main Boom Length(m)	45					
Jib Boom Length(m)	9.0		13.5		18.0	
Offset Angle(°)	10	30	10	30	10	30
Working Radius(m)	10	30	10	30	10	30
12.7	6.50					
14.0	6.50	15.4m × 6.50t	14.3m × 6.50t		15.8m × 5.90t	
16.0	6.50	6.50	6.50		5.85	
18.0	6.50	6.50	6.50	18.3m × 6.50t	5.65	
20.0	6.45	6.50	6.50	6.50	5.45	21.2m × 4.25t
22.0	5.55	5.85	5.75	6.20	5.25	4.20
24.0	4.80	5.05	5.00	5.40	5.10	4.10
26.0	4.15	4.40	4.35	4.70	4.50	4.05
28.0	3.65	3.85	3.80	4.10	3.95	3.95
30.0	3.20	3.35	3.35	3.65	3.45	3.85
32.0	2.80	2.95	2.95	3.20	3.05	3.40
34.0	2.40	2.55	2.60	2.80	2.70	3.05
36.0	2.05	2.15	2.25	2.45	2.40	2.70
38.0	1.75	1.85	1.90	2.10	2.05	2.35
40.0	1.45	1.55	1.65	1.80	1.75	2.05
42.0			1.40	1.55	1.50	1.75
44.0					1.30	1.50

- NOTES
1. The rated loads shown do not exceed 75% of tipping load with the machine on firm level ground.
 2. To calculate the maximum load that can actually be lifted, deduct weight of all lifting accessories, such as main hook, from figures shown above.

Hook Capacity	Weight
70.0t Hook	0.80t
40.0t Hook	0.41t
15.0t Hook	0.36t
6.5t Hook	0.18t

3. Working radius is the horizontal distance from the swing center to the center of gravity of a lifted load.
4. The counterweight is 23.8ton.
5. Be sure to fully extend the side frames before operating the machine.
6. Correlation between the number of falls, maximum rated loads, hook weights are shown in the table below.

78% Tipping Load(JIS Rating)



■Crane Ratings(Main boom with Jib in 360° Working Area)(1)

Unit:ton

Main Boom Length(m)	27					
Jib Boom Length(m)	9.0		13.5		18.0	
Offset Angle(°)	10	30	10	30	10	30
Working Radius(m)						
6.4	34.45	34.00	34.20	33.60	33.85	33.05
7.0	30.10	29.70	29.85	29.30	29.55	28.85
8.0	24.75	24.40	24.50	24.05	24.20	23.60
9.0	20.85	20.60	20.65	20.25	20.35	19.85
10.0	17.95	17.70	17.75	17.40	17.45	17.00
12.0	13.85	13.65	13.65	13.40	13.35	13.05
14.0	11.10	10.95	10.90	10.70	10.65	10.40
16.0	9.15	9.00	8.95	8.75	8.70	8.50
18.0	7.70	7.55	7.45	7.35	7.25	7.05
20.0	6.55	6.45	6.35	6.20	6.10	5.95
22.0	5.65	5.55	5.45	5.35	5.20	5.10
24.0	4.90	4.85	4.70	4.65	4.45	4.40
24.6	4.70	4.65	4.50	4.45	4.25	4.20

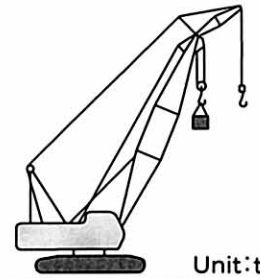
Unit:ton

Main Boom Length(m)	30					
Jib Boom Length(m)	9.0		13.5		18.0	
Offset Angle(°)	10	30	10	30	10	30
Working Radius(m)						
6.9	30.70	30.30	30.45	29.90	30.15	29.40
7.0	30.05	29.65	29.80	29.25	29.50	28.80
8.0	24.65	24.35	24.40	23.95	24.15	23.55
9.0	20.80	20.50	20.55	20.15	20.30	19.80
10.0	17.85	17.60	17.65	17.30	17.35	16.95
12.0	13.75	13.55	13.55	13.30	13.30	12.95
14.0	11.00	10.85	10.80	10.60	10.55	10.30
16.0	9.05	8.90	8.85	8.65	8.60	8.35
18.0	7.55	7.45	7.35	7.20	7.10	6.95
20.0	6.40	6.30	6.20	6.10	6.00	5.85
22.0	5.50	5.40	5.30	5.20	5.05	4.95
24.0	4.75	4.70	4.55	4.50	4.30	4.20
26.0	4.15	4.10	3.90	3.85	3.65	3.55
27.2	3.80	3.75	3.55	3.50	3.30	3.20

- NOTES
1. The rated loads shown do not exceed 78% of tipping load with the machine on firm level ground, and are not less than 1.15 times over-front stability stipulated by the mobile crane construction standards.
 2. To calculate the maximum load that can actually be lifted, deduct weight of all lifting accessories, such as main hook, from figures shown above.
 3. Working radius is the horizontal distance from the swing center to the center of gravity of a lifted load.
 4. The counterweight is 23.8ton.
 5. Be sure to fully extend the side frames before operating the machine.
 6. Correlation between the number of falls, maximum rated loads, hook weights are shown in the table below.

Hook capacity (t)	Hook weight (t)	Maximum rated load (t)					
		6	5	4	3	2	1
70.0	0.80	34.45	32.50	26.00	19.50	13.00	—
40.0	0.41	34.45	32.50	26.00	19.50	13.00	—
15.0	0.36				15.00	13.00	—
6.5	0.18						6.50

78% Tipping Load(JIS Rating)



■ Crane Ratings(Main boom with Jib in 360° Working Area)(2)

Unit:ton

Main Boom Length(m)	33					
Jib Boom Length(m)	9.0		13.5		18.0	
Offset Angle(°)						
Working Radius(m)	10	30	10	30	10	30
7.5	27.00	26.65	26.75	26.25	26.50	25.80
8.0	24.55	24.20	24.30	23.85	24.05	23.45
9.0	20.65	20.40	20.45	20.05	20.20	19.70
10.0	17.75	17.50	17.55	17.20	17.25	16.85
12.0	13.65	13.45	13.45	13.15	13.20	12.85
14.0	10.90	10.70	10.70	10.45	10.45	10.15
16.0	8.90	8.75	8.70	8.55	8.50	8.25
18.0	7.45	7.30	7.25	7.10	7.00	6.80
20.0	6.30	6.20	6.10	5.95	5.85	5.70
22.0	5.35	5.25	5.20	5.05	4.95	4.80
24.0	4.60	4.55	4.45	4.35	4.15	4.00
26.0	4.00	3.90	3.75	3.65	3.50	3.35
28.0	3.40	3.35	3.20	3.10	2.90	2.80
29.8	2.95	2.90	2.75	2.65	2.45	2.40

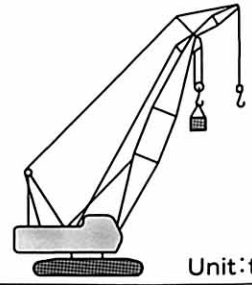
Unit:ton

Main Boom Length(m)	36					
Jib Boom Length(m)	9.0		13.5		18.0	
Offset Angle(°)						
Working Radius(m)	10	30	10	30	10	30
7.5						
8.0	24.50	24.15	24.25	23.80	24.00	23.40
9.0	20.65	20.35	20.40	20.05	20.15	19.65
10.0	17.70	17.45	17.50	17.15	17.25	16.80
12.0	13.60	13.40	13.40	13.15	13.15	12.80
14.0	10.85	10.65	10.65	10.40	10.40	10.15
16.0	8.85	8.70	8.65	8.50	8.45	8.20
18.0	7.40	7.25	7.20	7.05	6.95	6.75
20.0	6.20	6.10	6.05	5.90	5.80	5.65
22.0	5.30	5.20	5.10	5.00	4.90	4.75
24.0	4.55	4.45	4.35	4.25	4.10	3.95
26.0	3.90	3.80	3.65	3.55	3.40	3.25
28.0	3.30	3.25	3.10	3.00	2.80	2.70
30.0	2.80	2.75	2.60	2.50	2.35	2.25
32.0	2.40	2.30	2.15	2.10	1.90	1.85
32.4	2.30	2.25	2.10	2.00	1.85	1.75

- NOTES
1. The rated loads shown do not exceed 78% of tipping load with the machine on firm level ground, and are not less than 1.15 times over-front stability stipulated by the mobile crane construction standards.
 2. To calculate the maximum load that can actually be lifted, deduct weight of all lifting accessories, such as main hook, from figures shown above.
 3. Working radius is the horizontal distance from the swing center to the center of gravity of a lifted load.
 4. The counterweight is 23.8ton.
 5. Be sure to fully extend the side frames before operating the machine.
 6. Correlation between the number of falls, maximum rated loads, hook weights are shown in the table below.

Hook capacity (t)	Hook weight (t)	Maximum rated load (t)				
		5	4	3	2	1
70.0	0.80	27.00	22.35	19.50	13.00	—
40.0	0.41	27.00	22.35	19.50	13.00	—
15.0	0.36			15.00	13.00	—
6.5	0.18					6.50

78% Tipping Load(JIS Rating)



■Crane Ratings(Main boom with Jib in 360° Working Area)(3)

Unit:ton

Main Boom Length(m)	39					
Jib Boom Length(m)	9.0		13.5		18.0	
Offset Angle(°)	10	30	10	30	10	30
Working Radius(m)	10	30	10	30	10	30
8.6	21.90	21.60	21.70	21.30	21.45	20.90
9.0	20.50	20.20	20.30	19.90	20.05	19.55
10.0	17.60	17.35	17.35	17.05	17.15	16.70
12.0	13.45	13.25	13.25	13.00	13.05	12.70
14.0	10.70	10.55	10.50	10.30	10.30	10.00
16.0	8.70	8.55	8.55	8.35	8.30	8.05
18.0	7.25	7.10	7.05	6.90	6.85	6.65
20.0	6.05	5.95	5.90	5.75	5.70	5.50
22.0	5.15	5.05	4.95	4.85	4.75	4.55
24.0	4.40	4.30	4.15	4.05	3.90	3.75
26.0	3.70	3.60	3.45	3.35	3.20	3.05
28.0	3.10	3.00	2.90	2.80	2.65	2.50
30.0	2.60	2.55	2.40	2.30	2.15	2.05
32.0	2.15	2.10	1.95	1.90	1.70	1.60
34.0	1.80	1.75	1.60	1.50	1.35	
35.0	1.65	1.60	1.40	1.35		

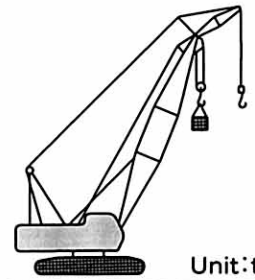
Unit:ton

Main Boom Length(m)	42					
Jib Boom Length(m)	9.0		13.5		18.0	
Offset Angle(°)	10	30	10	30	10	30
Working Radius(m)	10	30	10	30	10	30
9.1	19.50	19.50	19.50	19.50	19.50	19.15
10.0	17.50	17.25	17.30	17.00	17.10	16.65
12.0	13.40	13.20	13.20	12.95	13.00	12.60
14.0	10.65	10.45	10.45	10.20	10.25	9.95
16.0	8.65	8.50	8.45	8.30	8.25	8.00
18.0	7.15	7.05	7.00	6.80	6.75	6.55
20.0	6.00	5.90	5.85	5.70	5.60	4.45
22.0	5.05	5.00	4.90	4.75	4.65	4.45
24.0	4.30	4.20	4.05	3.95	3.80	3.65
26.0	3.60	3.50	3.35	3.25	3.10	2.95
28.0	3.00	2.90	2.75	2.65	2.50	2.40
30.0	2.50	2.40	2.25	2.15	2.00	1.90
32.0	2.05	1.95	1.85	1.75	1.60	1.50
34.0	1.65	1.60	1.45	1.40		
36.0	1.35					

- NOTES
1. The rated loads shown do not exceed 78% of tipping load with the machine on firm level ground, and are not less than 1.15 times over-front stability stipulated by the mobile crane construction standards.
 2. To calculate the maximum load that can actually be lifted, deduct weight of all lifting accessories, such as main hook, from figures shown above.
 3. Working radius is the horizontal distance from the swing center to the center of gravity of a lifted load.
 4. The counterweight is 23.8ton.
 5. Be sure to fully extend the side frames before operating the machine.
 6. Correlation between the number of falls, maximum rated loads, hook weights are shown in the table below.

Hook capacity (t)	Hook weight (t)	Maximum rated load(t)			
		4	3	2	1
70.0	0.80	21.9	17.65	13.00	—
40.0	0.41	21.9	17.65	13.00	—
15.0	0.36		15.00	13.00	—
6.5	0.18				6.50

78% Tipping Load(JIS Rating)



■ Crane Ratings(Main boom with Jib in 360° Working Area)(4)

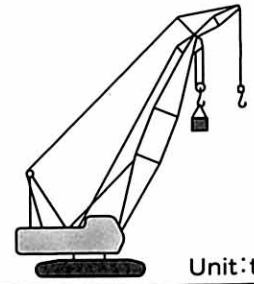
Unit:ton

Main Boom Length(m)	45					
Jib Boom Length(m)	9.0		13.5		18.0	
Offset Angle(°)	10	30	10	30	10	30
Working Radius(m)	10	30	10	30	10	30
9.7	18.25	17.95	18.05	17.70	17.80	17.35
10.0	17.45	17.20	17.25	16.90	17.00	16.55
12.0	13.30	13.10	13.10	12.85	12.90	12.55
14.0	10.55	10.35	10.35	10.10	10.15	9.85
16.0	8.55	8.40	8.35	8.20	8.15	7.90
18.0	7.05	6.95	6.90	6.70	6.70	6.45
20.0	5.90	5.80	5.75	5.60	5.55	5.35
22.0	4.95	4.85	4.80	4.60	4.55	4.35
24.0	4.15	4.05	3.95	3.80	3.70	3.50
26.0	3.45	3.35	3.25	3.10	3.00	2.85
28.0	2.85	2.75	2.65	2.55	2.40	2.25
30.0	2.35	2.25	2.15	2.05	1.90	1.75
32.0	1.90	1.85	1.70	1.60	1.45	1.35
34.0	1.50	1.45	1.30			

- NOTES
1. The rated loads shown do not exceed 78% of tipping load with the machine on firm level ground, and are not less than 1.15 times over-front stability stipulated by the mobile crane construction standards.
 2. To calculate the maximum load that can actually be lifted, deduct weight of all lifting accessories, such as main hook, from figures shown above.
 3. Working radius is the horizontal distance from the swing center to the center of gravity of a lifted load.
 4. The counterweight is 23.8ton.
 5. Be sure to fully extend the side frames before operating the machine.
 6. Correlation between the number of falls, maximum rated loads, hook weights are shown in the table below.

Hook capacity(t)	Hook weight(t)	Maximum rated load(t)			
		4	3	2	1
70.0	0.80	18.25	14.25	13.00	—
40.0	0.41	18.25	14.25	13.00	—
15.0	0.36		14.25	13.00	—
6.5	0.18				6.50

75% Tipping Load(PCSA Rating)



■Crane Ratings(Main boom with Jib in 360° Working Area)(1)

Unit:ton

Main Boom Length(m)	27					
Jib Boom Length(m)	9.0		13.5		18.0	
Offset Angle(°)	10	30	10	30	10	30
Working Radius(m)	10	30	10	30	10	30
6.4	33.15	32.90	32.85	32.50	32.55	32.00
7.0	28.95	28.75	28.70	28.35	28.40	27.90
8.0	23.80	23.60	23.55	23.25	23.25	22.85
9.0	20.05	19.95	19.85	19.60	19.55	19.20
10.0	17.25	17.15	17.05	16.85	16.80	16.50
12.0	13.30	13.25	13.10	12.95	12.85	12.65
14.0	10.70	10.60	10.50	10.35	10.25	10.05
16.0	8.80	8.75	8.60	8.50	8.35	8.20
18.0	7.40	7.35	7.20	7.10	6.95	6.85
20.0	6.30	6.25	6.10	6.05	5.85	5.75
22.0	5.40	5.40	5.20	5.15	5.00	4.95
24.0	4.70	4.70	4.50	4.50	4.30	4.25
24.6	4.50	4.50	4.35	4.30	4.10	4.05

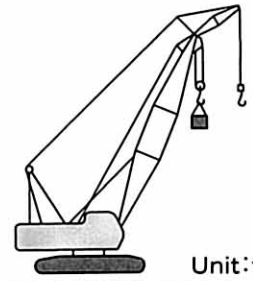
Unit:ton

Main Boom Length(m)	30					
Jib Boom Length(m)	9.0		13.5		18.0	
Offset Angle(°)	10	30	10	30	10	30
Working Radius(m)	10	30	10	30	10	30
6.9	28.90	28.70	28.65	28.30	28.35	27.85
7.0	28.90	28.70	28.65	28.30	28.35	27.85
8.0	23.70	23.55	23.50	23.20	23.20	22.80
9.0	20.00	19.85	19.75	19.55	19.50	19.15
10.0	17.15	17.05	16.95	16.75	16.70	16.40
12.0	13.20	13.15	13.00	12.85	12.75	12.55
14.0	10.60	10.50	10.40	10.25	10.15	9.95
16.0	8.70	8.60	8.50	8.40	8.25	8.10
18.0	7.25	7.20	7.05	7.00	6.85	6.75
20.0	6.15	6.10	5.95	5.90	5.75	5.65
22.0	5.30	5.25	5.10	5.05	4.90	4.80
24.0	4.55	4.55	4.40	4.35	4.15	4.10
26.0	4.00	3.95	3.80	3.75	3.60	3.55
27.2	3.65	3.65	3.50	3.45	3.30	3.20

- NOTES
1. The rated loads shown do not exceed 75% of tipping load with the machine on firm level ground.
 2. To calculate the maximum load that can actually be lifted, deduct weight of all lifting accessories, such as main hook, from figures shown above.
 3. Working radius is the horizontal distance from the swing center to the center of gravity of a lifted load.
 4. The counterweight is 23.8ton.
 5. Be sure to fully extend the side frames before operating the machine.
 6. Correlation between the number of falls, maximum rated loads, hook weights are shown in the table below.

Hook capacity (t)	Hook weight (t)	Maximum rated load (t)					
		6	5	4	3	2	1
70.0	0.80	34.45	32.50	26.00	19.50	13.00	—
40.0	0.41	34.45	32.50	26.00	19.50	13.00	—
15.0	0.36				15.00	13.00	—
6.5	0.18						6.50

75% Tipping Load(PCSA Rating)



■ Crane Ratings(Main boom with Jib in 360° Working Area)(2)

Unit: ton

Main Boom Length(m)	33					
Jib Boom Length(m)	9.0		13.5		18.0	
Offset Angle(°)	10	30	10	30	10	30
Working Radius(m)						
7.5	25.95	25.80	25.75	25.45	25.45	25.00
8.0	23.60	23.45	23.40	23.10	23.10	22.70
9.0	19.85	19.75	19.65	19.40	19.40	19.05
10.0	17.05	16.95	16.85	16.65	16.60	16.30
12.0	13.10	13.00	12.90	12.75	12.65	12.45
14.0	10.45	10.40	10.25	10.15	10.05	9.85
16.0	8.55	8.50	8.40	8.25	8.15	8.00
18.0	7.15	7.10	6.95	6.85	6.75	6.60
20.0	6.05	6.00	5.85	5.80	5.65	5.55
22.0	5.15	5.10	5.00	4.90	4.75	4.70
24.0	4.45	4.40	4.25	4.20	4.05	4.00
26.0	3.85	3.80	3.65	3.60	3.45	3.35
28.0	3.35	3.30	3.15	3.10	2.90	2.80
29.8	2.95	2.90	2.75	2.65	2.45	2.40

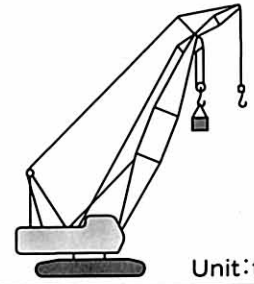
Unit: ton

Main Boom Length(m)	36					
Jib Boom Length(m)	9.0		13.5		18.0	
Offset Angle(°)	10	30	10	30	10	30
Working Radius(m)						
8.0	23.15	23.00	22.95	22.65	22.65	22.25
9.0	19.85	19.70	19.65	19.40	19.40	19.05
10.0	17.05	16.90	16.85	16.60	16.60	16.30
12.0	13.05	12.95	12.90	12.70	12.65	12.40
14.0	10.40	10.35	10.25	10.10	10.00	9.80
16.0	8.50	8.45	8.35	8.25	8.10	7.95
18.0	7.10	7.05	6.90	6.80	6.70	6.55
20.0	6.00	5.95	5.80	5.75	5.60	5.50
22.0	5.10	5.05	4.90	4.85	4.70	4.60
24.0	4.35	4.35	4.20	4.15	4.00	3.90
26.0	3.75	3.75	3.60	3.55	3.40	3.25
28.0	3.25	3.25	3.10	3.00	2.80	2.70
30.0	2.80	2.75	2.60	2.50	2.35	2.25
32.0	2.40	2.30	2.15	2.10	1.90	1.85
32.4	2.30	2.25	2.10	2.00	1.85	1.75

- NOTES
1. The rated loads shown do not exceed 75% of tipping load with the machine on firm level ground.
 2. To calculate the maximum load that can actually be lifted, deduct weight of all lifting accessories, such as main hook, from figures shown above.
 3. Working radius is the horizontal distance from the swing center to the center of gravity of a lifted load.
 4. The counterweight is 23.8ton.
 5. Be sure to fully extend the side frames before operating the machine.
 6. Correlation between the number of falls, maximum rated loads, hook weights are shown in the table below.

Hook capacity (t)	Hook weight (t)	Maximum rated load (t)				
		5	4	3	2	1
70.0	0.80	27.00	22.35	19.50	13.00	—
40.0	0.41	27.00	22.35	19.50	13.00	—
15.0	0.36			15.00	13.00	—
6.5	0.18					6.50

75% Tipping Load(PCSA Rating)



■Crane Ratings(Main boom with Jib in 360° Working Area)(3)

Unit:ton

Main Boom Length(m)	39					
Jib Boom Length(m)	9.0		13.5		18.0	
Offset Angle(°)	10	30	10	30	10	30
Working Radius(m)						
8.6	21.10	20.95	20.85	20.60	20.65	20.25
9.0	19.70	19.55	19.50	19.25	19.25	18.90
10.0	16.90	16.80	16.70	16.50	16.45	16.15
12.0	12.95	12.85	12.75	12.60	12.55	12.30
14.0	10.30	10.20	10.10	9.95	9.90	9.70
16.0	8.40	8.30	8.20	8.10	8.00	7.85
18.0	6.95	6.90	6.80	6.70	6.55	6.45
20.0	5.85	5.80	5.65	5.60	5.45	5.35
22.0	4.95	4.90	4.80	4.70	4.60	4.50
24.0	4.25	4.20	4.05	4.00	3.85	3.75
26.0	3.60	3.60	3.45	3.35	3.20	3.05
28.0	3.10	3.00	2.90	2.80	2.65	2.50
30.0	2.60	2.55	2.40	2.30	2.15	2.05
32.0	2.15	2.10	1.95	1.90	1.70	1.60
34.0	1.80	1.75	1.60	1.50	1.35	
35.0	1.65	1.60	1.40	1.35		

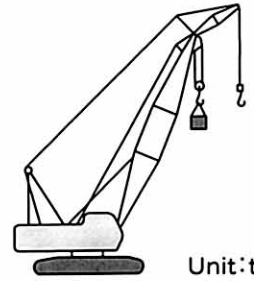
Unit:ton

Main Boom Length(m)	42					
Jib Boom Length(m)	9.0		13.5		18.0	
Offset Angle(°)	10	30	10	30	10	30
Working Radius(m)						
9.1	19.05	18.90	18.85	18.60	18.60	18.25
10.0	16.85	16.70	16.65	16.45	16.45	16.10
12.0	12.90	12.80	12.70	12.55	12.50	12.25
14.0	10.20	10.15	10.05	9.90	9.85	9.65
16.0	8.30	8.25	8.15	8.05	7.95	7.75
18.0	6.90	6.80	6.70	6.60	6.50	6.35
20.0	5.75	5.70	5.60	5.50	5.40	5.30
22.0	4.90	4.85	4.70	4.65	4.50	4.40
24.0	4.15	4.10	4.00	3.90	3.80	3.65
26.0	3.55	3.50	3.35	3.25	3.10	2.95
28.0	3.00	2.90	2.75	2.65	2.50	2.40
30.0	2.50	2.40	2.25	2.15	2.00	1.90
32.0	2.05	1.95	1.85	1.75	1.60	1.50
34.0	1.65	1.60	1.45	1.40		
36.0	1.35					

- NOTES
1. The rated loads shown do not exceed 75% of tipping load with the machine on firm level ground.
 2. To calculate the maximum load that can actually be lifted, deduct weight of all lifting accessories, such as main hook, from figures shown above.
 3. Working radius is the horizontal distance from the swing center to the center of gravity of a lifted load.
 4. The counterweight is 23.8ton.
 5. Be sure to fully extend the side frames before operating the machine.
 6. Correlation between the number of falls, maximum rated loads, hook weights are shown in the table below.

Hook capacity (t)	Hook weight (t)	Maximum rated load(t)			
		4	3	2	1
70.0	0.80	21.9	17.65	13.00	—
40.0	0.41	21.9	17.65	13.00	—
15.0	0.36		15.00	13.00	—
6.5	0.18				6.50

75% Tipping Load(PCSA Rating)



■ Crane Ratings(Main boom with Jib in 360° Working Area)(4)

Unit: ton

Main Boom Length(m)	45					
Jib Boom Length(m)	9.0		13.5		18.0	
Offset Angle(°)	10	30	10	30	10	30
Working Radius(m)						
9.7	17.55	17.40	17.35	17.10	17.10	16.80
10.0	16.75	16.65	16.55	16.35	16.35	16.05
12.0	12.80	12.70	12.60	12.45	12.40	12.15
14.0	10.15	10.05	9.95	9.80	9.75	9.55
16.0	8.20	8.15	8.05	7.95	7.85	7.70
18.0	6.80	6.70	6.60	6.50	6.40	6.30
20.0	5.65	5.60	5.50	5.40	5.30	5.20
22.0	4.80	4.75	4.60	4.55	4.45	4.30
24.0	4.05	4.00	3.90	3.80	3.70	3.50
26.0	3.45	3.35	3.25	3.10	3.00	2.85
28.0	2.85	2.75	2.65	2.55	2.40	2.25
30.0	2.35	2.25	2.15	2.05	1.90	1.75
32.0	1.90	1.85	1.70	1.60	1.45	1.35
34.0	1.50	1.45	1.30			

- NOTES
1. The rated loads shown do not exceed 75% of tipping load with the machine on firm level ground.
 2. To calculate the maximum load that can actually be lifted, deduct weight of all lifting accessories, such as main hook, from figures shown above.
 3. Working radius is the horizontal distance from the swing center to the center of gravity of a lifted load.
 4. The counterweight is 23.8ton.
 5. Be sure to fully extend the side frames before operating the machine.
 6. Correlation between the number of falls, maximum rated loads, hook weights are shown in the table below.

Hook capacity (t)	Hook weight (t)	Maximum rated load(t)			
		4	3	2	1
70.0	0.80	18.25	14.25	13.00	—
40.0	0.41	18.25	14.25	13.00	—
15.0	0.36		14.25	13.00	—
6.5	0.18				6.50

■Crane Boom Construction

Boom length (m)	9	12	15	18	21	24	27	30	33	36	39	42	45	48	51	54
Elements																
Lower boom 5m	1	1	1	1	1	1	1	1	1	1	1	1	1	1	1	1
Lower boom 4m	1	1	1	1	1	1	1	1	1	1	1	1	1	1	1	1
Boom inserts combination	I II	I II	I II	I II	I II	I II	I II	I II	I II	I II	I II	I II	I II	I II	I II	I II
3m boom insert		1	2	1	2	1	1 1	2 2	1 1	1 1	2 2	1 1	1 1	2 2	1 1	1 1
6m boom insert				1	1	2	1 1	1 1	2 2	1 1	1 1	2 2	1 1	1 1	2 2	1 1
9m boom insert							1	1	1	2 1	2 1	2 1	3 2	3 2	3 2	4 3
9m (B) boom insert								1	1	1	1	1	1	1	1	1
Available jib																
Available aux. jib																

Boom inserts combination :

I : For operation of crane boom only

II : For operation of crane boom with jib

6m boom insert can be replaced with two 3m boom inserts, and 9m boom insert with a combination of 3m and 6m boom inserts.

■Crane Jib Construction

Jib length (m)	9	13.5	18
Elements			
Lower jib 4.5m	1	1	1
Upper jib 4.5m	1	1	1
4.5m jib insert		1	2

■Component Weights and Dimensions for Transport

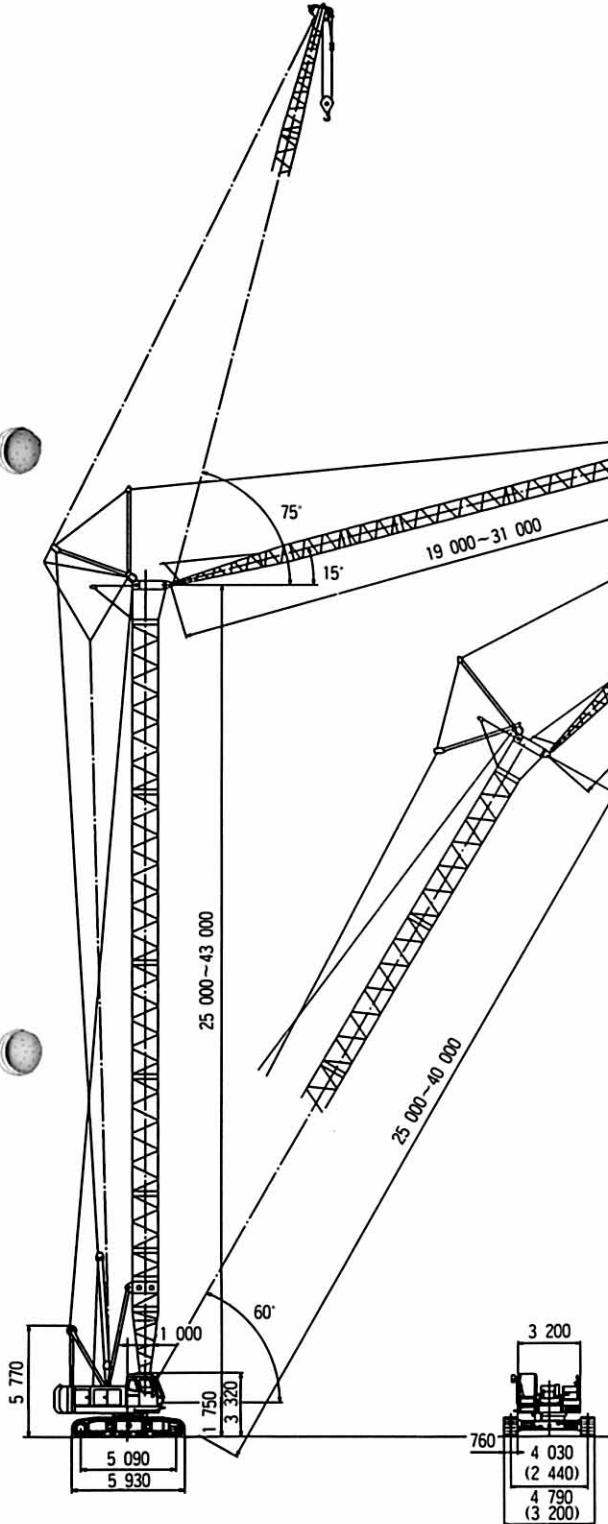
Components		Weight(t)	Q'ty	Length×Width×Height(m)			Remarks
Basic machine	Basic machine	36.8	1	7.98	3.20	3.40	Gantry, ropes and side frames included, except counterweight
	Aux. counterweight	0.6	2	0.69	0.29	0.67	Mounted to side for raise winch
	Counterweight	7.4	1	3.20	0.62	1.37	Inner
	Counterweight	7.9	1	3.20	0.73	1.37	Center
	Counterweight	8.5	1	3.20	0.71	1.48	Outer
Crane front	Lower boom	1.01	1	5.16	1.63	1.72	Backstop included
	Upper boom	1.14	1	4.43	1.49	1.54	Pendant rope included
	Bridle	0.29	1	1.72	0.69	0.28	
	3m boom insert	0.42	1	3.10	1.50	1.61	Pendant rope included
	6m boom insert	0.70	1	6.10	1.50	1.61	
	9m boom insert	0.93	1	9.10	1.50	1.61	
	9m (B) boom insert	0.94	1	9.10	1.50	1.62	
	Lower jib	0.57	1	4.62	0.82	0.75	Jib mast included
	Upper jib	0.25	1	4.93	0.78	1.11	
	4.5m jib insert	0.14	1	4.60	0.64	0.74	
	Aux jib	0.21	1	1.26	0.82	0.87	
	70ton hook	0.80	1	0.62	0.59	1.82	
	40ton hook	0.41	1	0.62	0.32	1.59	
	15ton hook	0.36	1	0.62	0.31	1.36	
6.5ton hook	0.18	1	0.30	0.30	0.84		

Full-Luffing Tower Crane

CX700

■ Dimensions

Unit: mm



■ Tower Jib Construction

Tower height (m)	19				22				25				28				31			
	Tower angle (°)				Tower angle (°)				Tower angle (°)				Tower angle (°)				Tower angle (°)			
	90	80	70	60	90	80	70	60	90	80	70	60	90	80	70	60	90	80	70	60
25	○	○	○	○	○	○	○	○	×	×	×	×	×	×	×	×	×	×	×	×
28	○	○	○	○	○	○	○	○	○	○	○	○	×	×	×	×	×	×	×	×
31	○	○	○	○	○	○	○	○	○	○	○	○	○	○	○	○	×	×	×	×
34	○	○	○	○	○	○	○	○	○	○	○	○	○	○	○	○	○	○	○	○
37	○	○	○	○	○	○	○	○	○	○	○	○	○	○	○	○	○	○	○	○
40	○	○	○	○	○	○	○	○	○	○	○	○	○	○	○	○	×	○	○	○
43	○	○	○	×	○	○	○	×	○	○	○	×	○	○	○	×	○	○	○	×

○ : Available × : Not available

■ Specifications

Maximum rated load	ton × m	13.0 × 12.0 (25m tower + 19m jib)
Tower length	m	25 ~ 43
Tower foot height	m	1.75
Jib length	m	19 ~ 31
Tower + Jib	m	43 + 31
Working radius	m	8.3 ~ 46.9
Max. lift above ground	m	70.4
Hoist/lower line speeds	m/min	* 100/65/32
Jib hoist/lower line speed	m/min	* 32
Tower hoist/lower line speed	m/min	* 53
Ground pressure kPa (kgf/cm ²)		86.3 (0.88)
Operating weight	ton	73.6 (43m tower + 31m jib)

NOTES 1. Data is expressed in SI units, along with conventional units in ().
 2. Other specifications, not shown, are similar to those for the crane.
 *Data in the bucket mode will vary with the load.

Figures in () indicate crawlers retracted.

78% Tipping Load (JIS Rating)

25_m Tower(2-Rope Reeving)

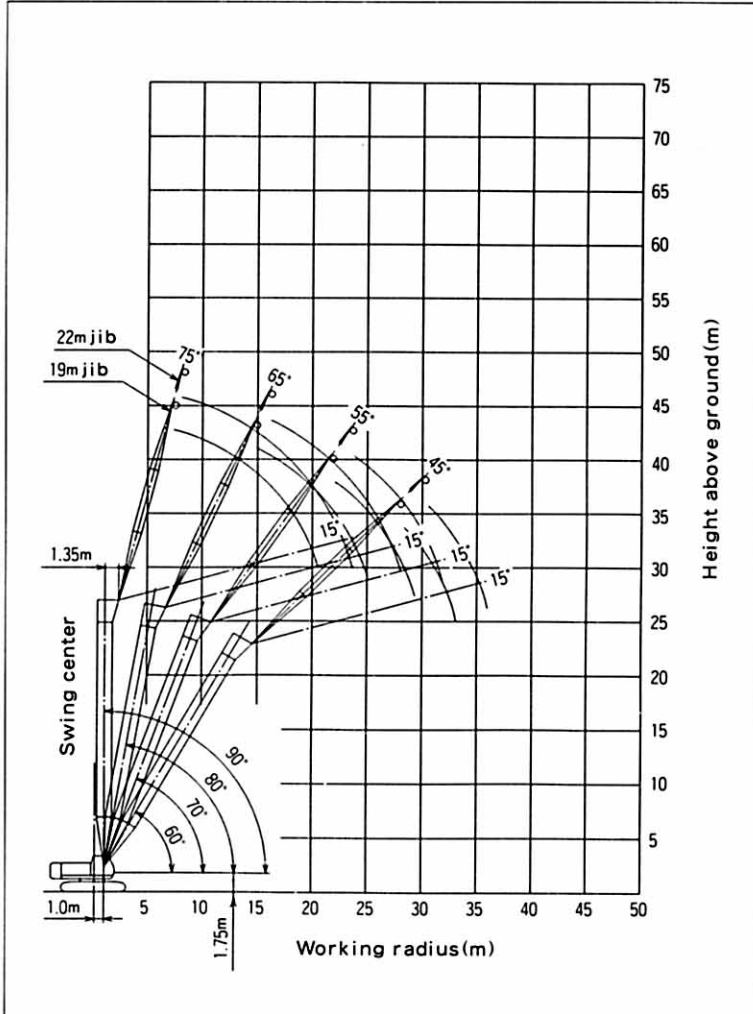
Rated Loads for Tower Crane

Unit: ton

Working radius (m)	Jib length (m)							
	19m				22m			
	90°	80°	70°	60°	90°	80°	70°	60°
8.3	13.00							
9.0	13.00				9.1m × 13.00t			
10.0	13.00				13.00			
12.0	13.00				13.00			
14.0	11.70	15.0m × 10.25t			11.65			
16.0	10.15	9.55			10.10	16.2m × 9.35t		
18.0	8.55	8.35			8.85	8.30		
20.0	6.80	7.40			7.55	7.30		
22.0	20.7m × 6.10t	6.55	6.05		6.25	6.50	23.7m × 5.45t	
24.0		5.90	5.45		23.6m × 5.20t	5.85	5.40	
26.0		25.0m × 5.65t	4.95			5.30	4.90	
28.0			4.50	28.3m × 4.10t		27.9m × 4.85t	4.45	
30.0			29.2m × 4.30t	3.80			4.10	30.4m × 3.70t
32.0				3.50			3.75	3.45
34.0				33.0m × 3.40t			32.1m × 3.70t	3.20
35.9								3.00

- NOTES:
- The rated loads shown do not exceed 78% of tipping load with the machine on firm level ground, and are not less than 1.15 times over-front stability stipulated by the mobile crane construction standards.
 - The load to be actually lifted will be the rated load shown minus the weight of all lifting attachments such as a hook. 15ton hook.....weight 0.36ton
 - Working radius is a horizontal distance between swing center of the machine and center of gravity of the load lifted.
 - Counterweight is 23.8ton.
 - In operation with 1-rope reeving, use a 6.5ton hook(option). In this case, the rated loads for tower crane(with 1-rope reeving)described in the Operation Manual will be applied.
 - Crawlers must be extended into position before crane operation.

Working Ranges



Working ranges are shown for unloading.

78% Tipping Load (JIS Rating)

28_m Tower(2-Rope Reeving)

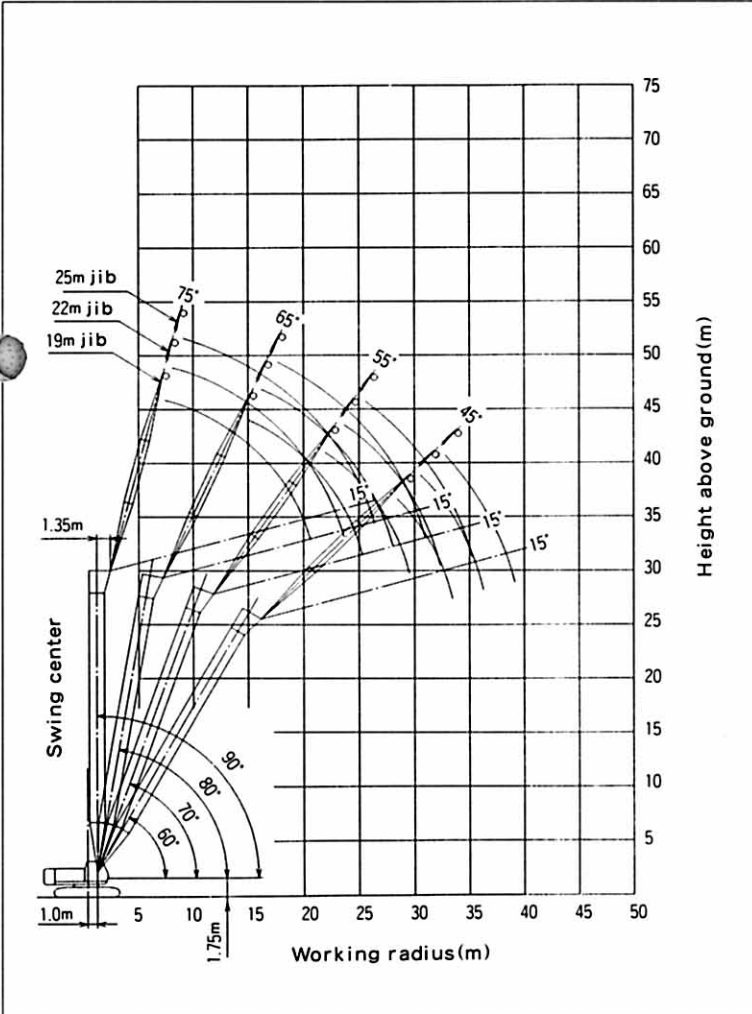
Rated Loads for Tower Crane

Unit: ton

Working radius (m)	Jib length (m)											
	19m				22m				25m			
	90°	80°	70°	60°	90°	80°	70°	60°	90°	80°	70°	60°
8.3	13.00											
9.0	13.00				9.2m × 13.00t							
10.0	13.00				13.00				13.00			
12.0	13.00				13.00				13.00			
14.0	11.70	15.5m × 9.75t			11.65				11.55			
16.0	10.10	9.45			10.05	16.7m × 8.95t			10.00			
18.0	8.60	8.30			8.85	8.20			8.75	8.15		
20.0	6.80	7.30			7.60	7.25			7.70	7.15		
22.0	20.7m × 6.05t	6.50	23.0m × 5.60t		6.25	6.45			6.70	6.35		
24.0		5.85	5.35		23.6m × 5.15t	5.80	24.7m × 5.05t		5.65	5.70		
26.0		25.6m × 5.40t	4.85			5.25	4.75		4.65	5.15	26.4m × 4.55t	
28.0			4.40	29.8m × 3.70t		4.80	4.35		26.5m × 4.40t	4.70	4.25	
30.0			4.05	3.65		28.5m × 4.70t	4.00	31.9m × 3.30t		4.30	3.90	
32.0			30.2m × 4.00t	3.40			3.65	3.30		31.3m × 4.10t	3.60	
34.0				3.15			33.1m × 3.50t	3.05			3.30	34.1m × 2.95t
36.0				34.5m × 3.05t				2.85			3.05	2.75
38.0							37.4m × 2.70t					2.55
40.0												2.35
40.3												2.30

For notes, refer to those on the 25m tower.

Working Ranges



Working ranges are shown for unloading.

78% Tipping Load (JIS Rating)

31_m Tower(2-Rope Reeving)

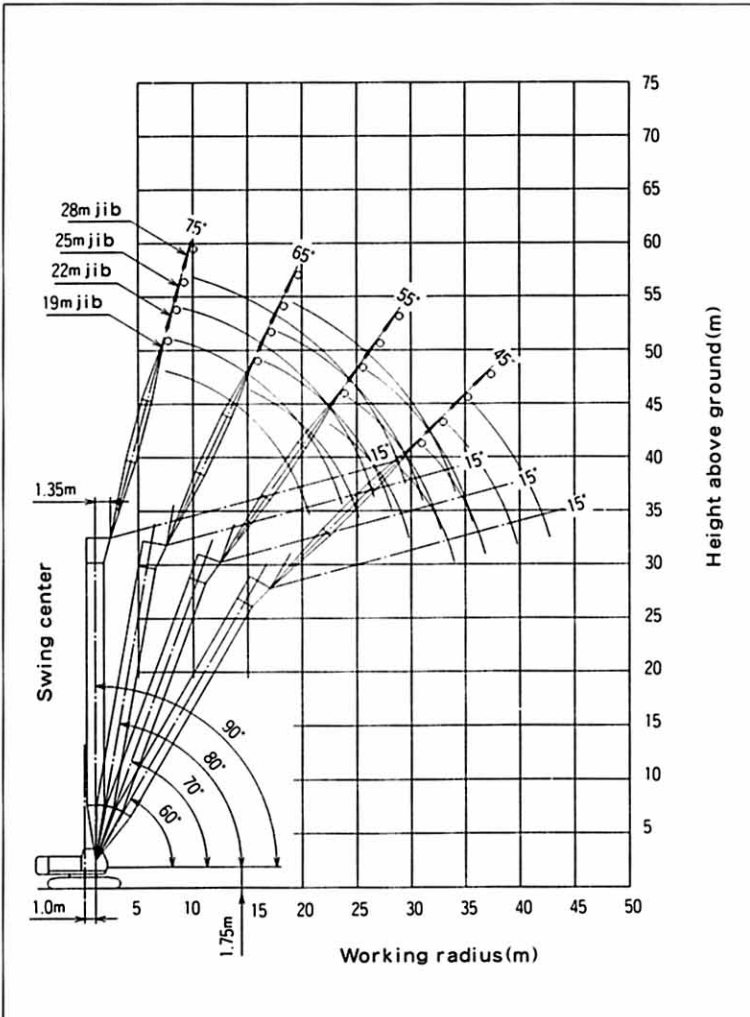
Rated Loads for Tower Crane

Unit: ton

Working radius (m)	Jib length (m)															
	19m				22m				25m				28m			
	90°	80°	70°	60°	90°	80°	70°	60°	90°	80°	70°	60°	90°	80°	70°	60°
8.4	13.00															
9.0	13.00				9.2m × 13.00t											
10.0	13.00				13.00				10.1m × 13.00t				10.9m × 10.75t			
12.0	13.00				13.00				12.95				10.75			
14.0	11.70				11.65				11.55				10.75			
16.0	10.10	9.35			10.05	17.3m × 8.50t			10.00				9.95			
18.0	8.60	8.20			8.85	8.10			8.75	18.5m × 7.75t			8.70	19.8m × 6.85t		
20.0	6.85	7.20			7.60	7.15			7.70	7.05			7.65	6.85		
22.0	20.7m × 6.15t	6.40			6.25	6.35			6.70	6.25			6.80	6.20		
24.0		5.75	5.15		23.6m × 5.20t	5.70	25.7m × 4.65t		5.65	5.65			5.95	5.55		
26.0		5.25	4.70			5.20	4.60		4.65	5.10	27.4m × 4.20t		5.10	5.05		
28.0		26.1m × 5.20t	4.25			4.75	4.20		26.5m × 4.40t	4.65	4.10		4.35	4.60	29.2m × 3.80t	
30.0			3.90	31.3m × 3.30t		29.0m × 4.50t	3.85			4.25	3.75		29.4m × 3.80t	4.20	3.70	
32.0			31.2m × 3.75t	3.20			3.55	33.4m × 2.95t		31.9m × 3.95t	3.45			3.85	3.40	
34.0				2.95			3.30	2.85			3.20	35.6m × 2.60t		3.60	3.10	
36.0				2.75			34.1m × 3.25t	2.65			2.95	2.55		34.8m × 3.45t	2.90	37.7m × 2.35t
38.0								2.50			37.0m × 2.85t	2.40			2.70	2.30
40.0								38.9m × 2.40t				2.20			39.9m × 2.50t	2.15
42.0												41.8m × 2.10t				2.00
44.0																1.85
44.7																1.80

For notes, refer to those on the 25m tower.

Working Ranges



Working ranges are shown for unloading.

78% Tipping Load (JIS Rating)

34_m Tower(2-Rope Reeving)

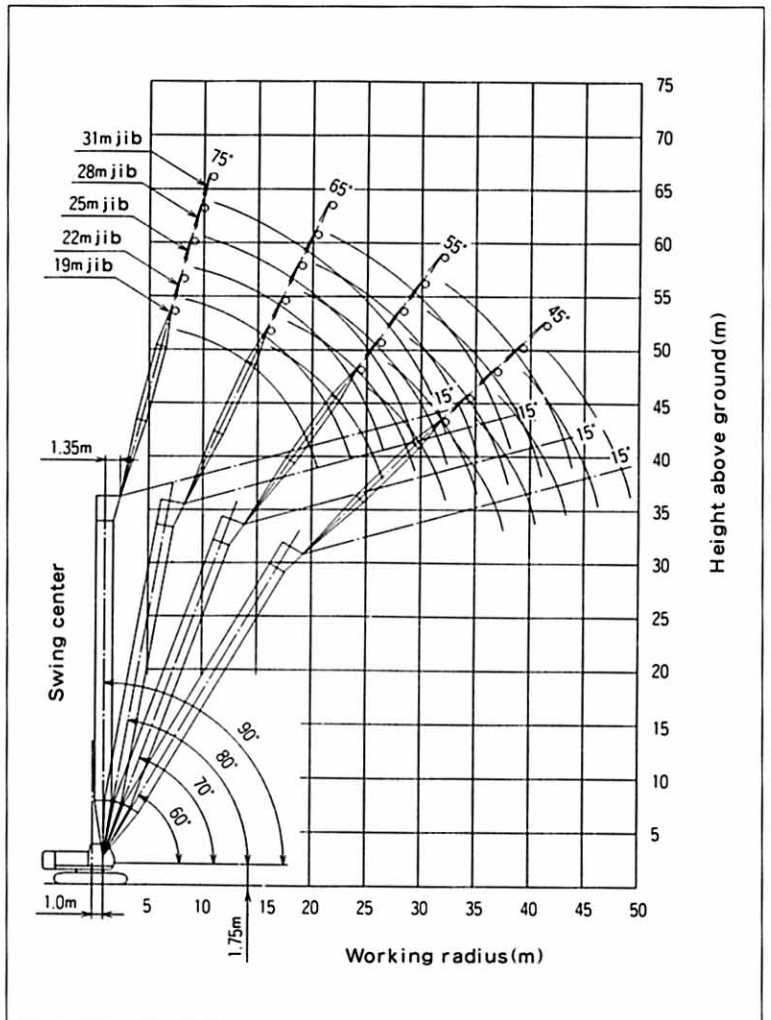
Rated Loads for Tower Crane

Unit: ton

Working radius (m)	Jib length (m)															
	19m				22m				25m				28m			
	90°	80°	70°	60°	90°	80°	70°	60°	90°	80°	70°	60°	90°	80°	70°	60°
8.5	13.00															
9.0	13.00				9.3m × 13.00t											
10.0	13.00				13.00				10.1m × 13.00t				10.9m × 10.60t			
12.0	13.00				13.00				12.60				10.60			
14.0	11.65				11.60				11.40				10.60			
16.0	10.10	16.5m × 8.90t			10.05	17.8m × 8.10t			10.00				9.90			
18.0	8.60	8.05			8.80	8.00			8.75	19.1m × 7.35t			8.70			
20.0	6.85	7.10			7.60	7.05			7.70	6.95			7.65	20.3m × 6.75t		
22.0	20.7m × 6.20t	6.35			6.25	6.25			6.70	6.15			6.80	6.10		
24.0		5.70	25.0m × 4.75t		23.6m × 5.20t	5.65			5.65	5.55			5.95	5.50		
26.0		5.15	4.50		5.10	26.8m × 4.30t			4.65	5.00			5.10	4.95		
28.0		26.6m × 5.00t	4.10		4.65	4.05			26.5m × 4.40t	4.55	28.5m × 3.85t		4.35	4.50		
30.0			3.80		29.5m × 4.35t	3.70			4.20	3.60			29.4m × 3.80t	4.15	30.2m × 3.50t	
32.0			3.50	32.8m × 2.90t		3.40			3.85	3.30			3.80	3.25		
34.0			32.3m × 3.45t	2.80		3.15	34.9m × 2.60t		32.4m × 3.80t	3.05			3.50	3.00		
36.0				2.60		35.2m × 3.00t	2.50			2.85	37.1m × 2.30t		35.3m × 3.35t	2.75		
38.0				37.5m × 2.45t			2.30			2.65	2.20			2.55	39.2m × 2.05t	
40.0							2.15			38.1m × 2.60t	2.05			2.40	2.00	
42.0							40.4m × 2.10t				1.90			41.0m × 2.30t	1.85	
44.0											43.3m × 1.85t				1.70	
46.0															1.60	
48.0															45.2m × 1.55t	

Working radius (m)	Jib length (m)			
	90°	80°	70°	60°
11.8	8.60			
12.0	8.60			
14.0	8.60			
16.0	8.15			
18.0	7.40			
20.0	6.75	21.6m × 5.40t		
22.0	6.20	5.40		
24.0	5.65	5.40		
26.0	4.95	4.85		
28.0	4.30	4.40		
30.0	3.75	4.05	31.9m × 3.15t	
32.0	3.30	3.70	3.15	
34.0	32.3m × 3.20t	3.45	2.90	
36.0		3.20	2.70	
38.0		2.95	2.50	
40.0		38.2m × 2.90t	2.30	41.3m × 1.75t
42.0			2.15	1.70
44.0			43.9m × 2.00t	1.55
46.0				1.45
48.0				1.35
49.1				1.30

Working Ranges



For notes, refer to those on the 25m tower.

Working ranges are shown for unloading.

78% Tipping Load (JIS Rating)

37 m Tower(2-Rope Reeving)

Rated Loads for Tower Crane

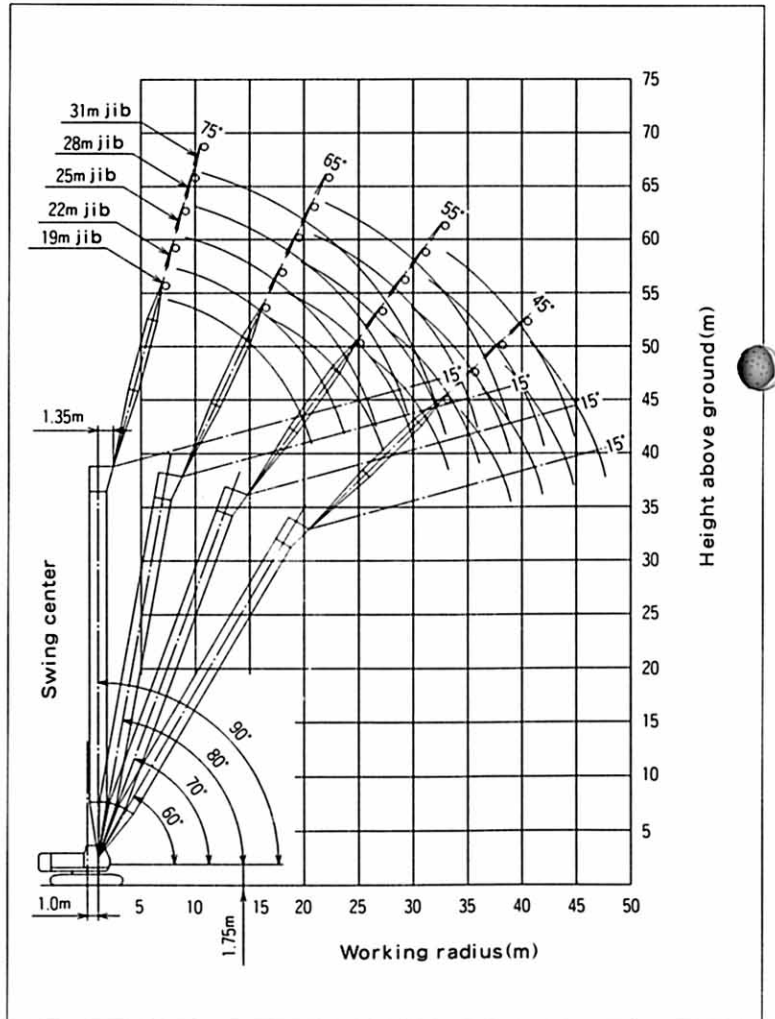
Unit: ton

Working radius (m)	Jib length (m)															
	19m				22m				25m				28m			
	90°	80°	70°	60°	90°	80°	70°	60°	90°	80°	70°	60°	90°	80°	70°	60°
8.5	13.00															
9.0	13.00				9.3m × 13.00t											
10.0	13.00				13.00				10.2m × 13.00t				11.0m × 10.45t			
12.0	13.00				12.75				12.20				10.45			
14.0	11.65				11.50				11.05				10.45			
16.0	10.10	17.0m × 8.50t			10.05				9.95				9.75			
18.0	8.60	7.95			8.80	18.3m × 7.75t			8.70	19.6m × 7.00t			8.65			
20.0	6.85	7.00			7.60	6.95			7.65	6.85			7.60	20.8m × 6.45t		
22.0	20.7m × 6.25t	6.25			6.25	6.15			6.70	6.10			6.75	6.00		
24.0		5.60			23.6m × 5.20t	5.55			5.65	5.45			5.95	5.40		
26.0		5.10	26.1m × 4.35t		5.00	27.8m × 3.95t			4.65	4.95			5.10	4.85		
28.0		27.1m × 4.55t	4.00		4.60	3.90			26.5m × 4.40t	4.50	23.5m × 3.55t		4.35	4.45		
30.0			3.65		4.20	3.55			4.10	3.45			28.4m × 3.75t	4.05	31.2m × 3.20t	
32.0			3.35			3.30			3.80	3.20				3.75	3.10	
34.0			33.3m × 3.20t	34.3m × 2.60t		3.05			32.9m × 3.65t	2.95				3.45	2.85	
36.0				2.40		2.80	36.4m × 2.30t			2.70				35.8m × 3.25t	2.65	
38.0				2.25		2.25	36.2m × 2.75t	2.15		2.55	38.6m × 2.00t				2.45	
40.0				39.0m × 2.15t				2.00			39.1m × 2.45t	1.90			2.30	40.7m × 1.65t
42.0								41.9m × 1.90t				1.75			2.15	1.65
44.0												1.60				1.50
46.0													44.8m × 1.55t			1.40
47.7																1.30

Working radius (m)	Jib length (m)		
	90°	80°	70°
11.8	8.50		
12.0	8.50		
14.0	8.50		
16.0	8.15		
18.0	7.40		
20.0	6.75		
22.0	6.20	22.1m × 5.30t	
24.0	5.70	5.30	
26.0	4.90	4.80	
28.0	4.20	4.35	
30.0	3.70	3.95	
32.0	3.25	3.65	32.9m × 2.90t
34.0	32.3m × 3.20t	3.35	2.75
36.0		3.10	2.55
38.0		2.90	2.35
40.0		38.7m × 2.85t	2.20
42.0			2.05
44.0			1.90
44.9			1.85

For notes, refer to those on the 25m tower.

Working Ranges



Working ranges are shown for unloading.

78% Tipping Load (JIS Rating)

40_m Tower(2-Rope Reeving)

Rated Loads for Tower Crane

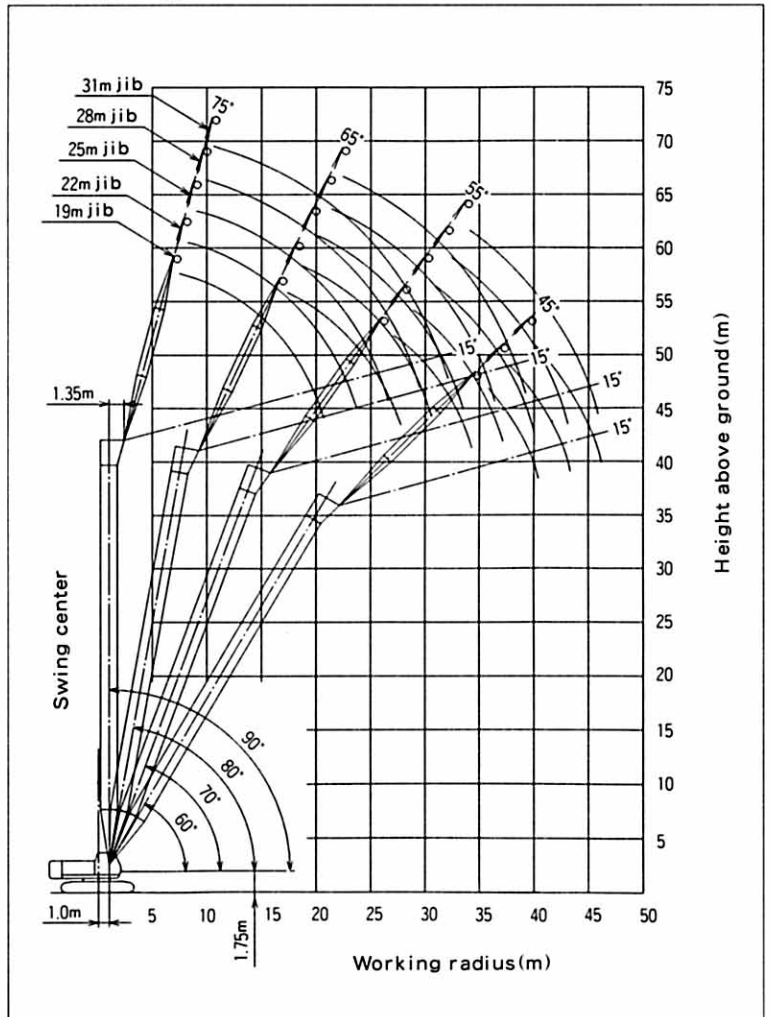
Unit: ton

Working radius (m)	Jib length (m)														
	19m				22m				25m				28m		
	90°	80°	70°	60°	90°	80°	70°	60°	90°	80°	70°	60°	90°	80°	70°
8.6	13.00														
9.0	13.00				9.4m × 13.00t										
10.0	13.00				13.00				10.2m × 12.25t				11.0m × 10.35t		
12.0	12.85				12.35				11.85				10.35		
14.0	11.60				11.20				10.75				10.35		
16.0	10.05	17.6m × 8.05t			10.00				9.85				9.50		
18.0	8.65	7.85			8.80	18.8m × 7.35t			8.70				8.65		
20.0	6.85	6.90			7.60	6.80			7.65	20.1m × 6.70t			7.60	21.4m × 6.10t	
22.0	20.7m × 6.25t	6.15			6.25	6.05			6.70	5.95			6.75	5.90	
24.0		5.50			23.6m × 5.20t	5.45			5.65	5.35			5.95	5.30	
26.0		5.00	27.1m × 3.95t			4.95			4.65	4.85			5.10	4.80	
28.0		27.6m × 4.55t	3.80			4.50	28.8m × 3.60t		26.5m × 4.40t	4.40			4.35	4.35	
30.0			3.50			4.10	3.40		4.05	30.5m × 3.25t			29.4m × 3.75t	4.00	
32.0			3.20			30.5m × 4.05t	3.15		3.70	3.05			3.65	32.2m × 2.95t	
34.0			2.95	35.8m × 2.25t			2.90		33.4m × 3.50t	2.80			3.40	2.70	
36.0			34.3m × 2.90t	2.20			2.70	37.9m × 1.95t		2.60			3.15	2.50	
38.0				2.05			37.2m × 2.55t	1.95		2.40			36.3m × 3.10t	2.35	
40.0				1.90				1.80		2.25	40.1m × 1.50t			2.15	
42.0				40.5m × 1.85t				1.65		42.1m × 2.20t	1.50			2.00	
44.0								43.4m × 1.55t			1.40			43.0m × 1.95t	
46.0											1.30				
46.3											1.25				

Working radius (m)	Jib length (m)		
	31m		
	90°	80°	70°
11.9	8.40		
12.0	8.40		
14.0	8.40		
16.0	8.15		
18.0	7.40		
20.0	6.75		
22.0	6.20	22.6m × 5.25t	
24.0	5.65	5.20	
26.0	4.85	4.70	
28.0	4.15	4.25	
30.0	3.60	3.90	
32.0	3.20	3.55	
34.0	32.3m × 3.10t	3.30	2.60
36.0		3.05	2.40
38.0		2.85	2.25
40.0		39.2m × 2.70t	2.05
42.0			1.90
44.0			1.80
45.9			1.70

For notes, refer to those on the 25m tower.

Working Ranges



Working ranges are shown for unloading.

78% Tipping Load (JIS Rating)

43_m Tower(2-Rope Reeving)

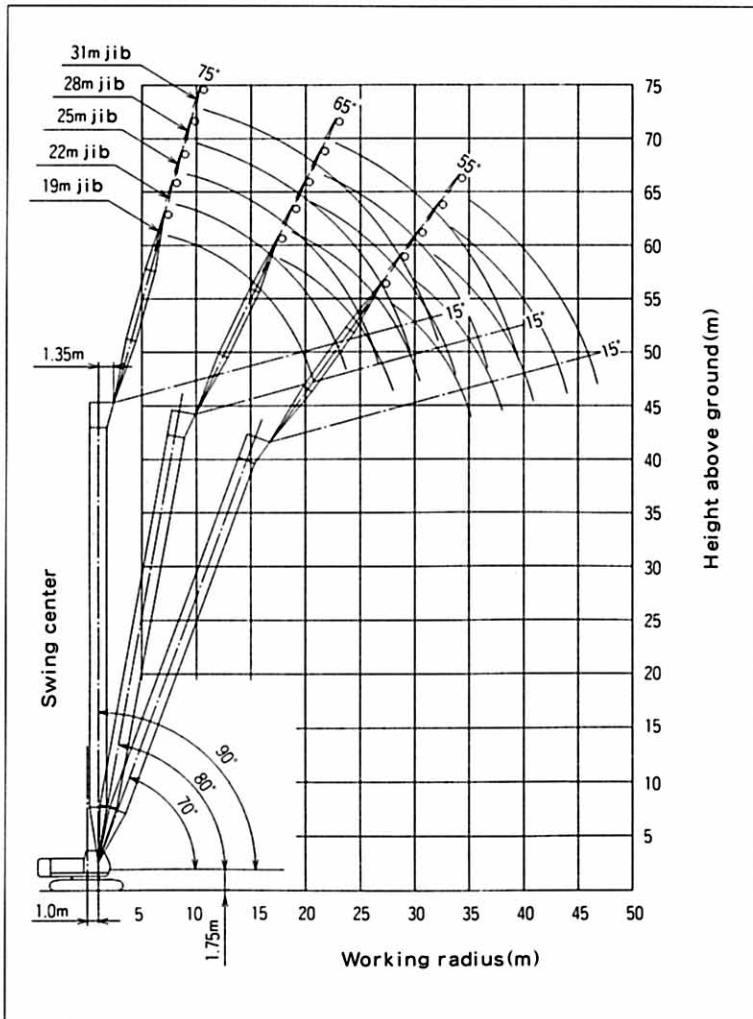
Rated Loads for Tower Crane

Unit: ton

Working radius (m)	Jib length (m)														
	19m			22m			25m			28m			31m		
	90°	80°	70°	90°	80°	70°	90°	80°	70°	90°	80°	70°	90°	80°	70°
8.6	13.00														
9.0	13.00			9.4m × 11.95t											
10.0	13.00			11.95			10.3m × 10.75t			11.1m × 9.65t				11.9m × 8.35t	
12.0	12.40			11.80			10.75			9.65				8.35	
14.0	11.30			10.85			10.40			9.60				8.35	
16.0	10.05			9.95			9.60			9.15				8.15	
18.0	8.65	18.1m × 7.65t		8.75	19.4m × 6.95t		8.70			8.55				7.40	
20.0	6.85	6.75		7.60	6.70		7.65	20.6m × 6.35t		7.60	21.9m × 5.80t			6.75	
22.0	20.7m × 6.25t	6.05		6.25	5.95		6.70	5.85		6.75	5.80		6.20	23.2m × 5.25t	
24.0		5.40		23.6m × 5.20t	5.35		5.65	5.25		5.95	5.20		5.60	5.10	
26.0		4.90			4.85		4.65	4.75		5.10	4.70		4.80	4.60	
28.0		4.50	28.1m × 3.65t		4.40	29.8m × 3.30t	26.5m × 4.40t	4.30		4.35	4.25		4.15	4.15	
30.0		28.2m × 4.45t	3.35		4.05	3.25		3.95	31.6m × 2.95t	29.4m × 3.75t	3.90		3.55	3.80	
32.0			3.05		31.1m × 3.85t	3.00		3.65	2.90		3.60	33.3m × 2.65t	3.10	3.50	
34.0			2.85			2.75		3.35	2.65		3.30	2.60	32.3m × 3.05t	3.20	35.0m × 2.35t
36.0			35.3m × 2.70t			2.55			2.45		3.05	2.40		3.00	2.30
38.0						2.35			2.25		36.9m × 2.35t	2.20		2.75	2.10
40.0						38.2m × 2.30t			2.10			2.05		39.7m × 2.60t	1.90
42.0									41.1m × 2.05t			1.90			1.75
44.0												1.75			1.65
46.0															1.50
46.9															1.45

For notes, refer to those on the 25m tower.

Working Ranges



Working ranges are shown for unloading.

78% Tipping Load (JIS Rating)

■ Crane Ratings (Main Boom in 360° Working Area)

Unit: ton

Working radius (m)	Boom length (m)																
	9	12	15	18	21	24	27	30	33	36	39	42	45	48	51	54	
3.5	70.00	3.6m × 70.00t															
4.0	70.00	64.80	4.2m × 61.70t														
4.5	58.30	57.95	57.75	4.7m × 55.25t													
5.0	52.05	51.90	51.80	51.75	5.3m × 47.05t												
5.5	44.80	44.60	44.50	44.45	44.35	5.8m × 40.80t											
6.0	39.25	39.05	38.95	38.90	38.80	38.70	6.4m × 35.05t	6.9m × 31.35t									
7.0	31.40	31.20	31.05	31.00	30.90	30.80	30.75	30.70	7.5m × 27.55t								
8.0	25.00	25.85	25.70	25.65	25.55	25.45	25.35	25.35	25.20	25.15	8.6m × 22.60t						
9.0	19.25	22.05	21.90	21.80	21.70	21.60	21.50	21.45	21.35	21.30	21.20	9.1m × 19.50t	9.7m × 18.90t				
10.0		19.15	19.00	18.90	18.80	18.70	18.60	18.55	18.40	18.35	18.25	18.20	18.10	10.2m × 17.50t	10.7m × 16.20t	11.3m × 13.00t	
12.0		11.6m × 15.00t	14.95	14.85	14.70	14.60	14.50	14.45	14.30	14.25	14.15	14.10	13.95	13.85	13.75	13.00	
14.0			12.25	12.15	12.00	11.90	11.75	11.70	11.55	11.50	11.40	11.30	11.20	11.10	10.95	10.90	
16.0			14.2m × 12.05t	10.20	10.05	9.95	9.80	9.75	9.60	9.50	9.45	9.35	9.20	9.10	9.00	8.95	
18.0				16.8m × 9.60t	8.60	8.48	8.35	8.30	8.10	8.05	7.95	7.85	7.75	7.65	7.50	7.45	
20.0					19.4m × 7.80t	7.35	7.20	7.15	6.95	6.90	6.80	6.70	6.55	6.45	6.35	6.30	
22.0						6.45	6.30	6.20	6.05	5.95	5.85	5.75	5.65	5.55	5.40	5.35	
24.0							5.55	5.50	5.30	5.20	5.10	5.00	4.90	4.80	4.65	4.60	
26.0								24.6m × 5.35t	4.85	4.70	4.60	4.50	4.40	4.25	4.15	4.00	3.90
28.0									27.2m × 4.55t	4.20	4.05	3.95	3.85	3.70	3.60	3.40	3.30
30.0										29.8m × 3.80t	3.65	3.50	3.35	3.20	3.05	2.85	2.80
32.0											3.25	3.10	2.95	2.75	2.65	2.45	2.35
34.0											32.4m × 3.15t	2.75	2.55	2.40	2.25	2.05	1.95
36.0												35.0m × 2.55t	2.25	2.05	1.90	1.70	1.60
38.0													37.6m × 2.00t	1.75	1.60	1.40	1.30
40.0														1.50	1.35		

- NOTES
- The rated loads shown do not exceed 78% of tipping load with the machine on firm level ground, and are not less than 1.15 times over-front stability stipulated by the mobile crane construction standards.
 - To calculate the maximum load that can actually be lifted, deduct weight of all lifting accessories, such as main hook, from figures shown above.
 - Working radius is the horizontal distance from the swing center to the center of gravity of a lifted load.
 - The counterweight is 23.8ton.
 - Be sure to fully extend the side frames before operating the machine.
 - Correlation between the number of falls, maximum rated loads, hook weights are shown in the table below.

Hook capacity (t)	Hook weight (t)	Maximum rated load (t)									
		10	9	8	7	6	5	4	3	2	1
70.0	0.80	70.0	58.5	52.0	45.5	39.0	32.5	26.0	19.5	13.0	—
40.0	0.41				40.0	39.0	32.5	26.0	19.5	13.0	—
15.0	0.36								15.0	13.0	—
6.5	0.18										6.5

78% Tipping Load(JIS Rating)

■Crane Ratings(Auxiliary Jib in 360° Working Area)

Unit:ton

Working radius (m)	Boom Length (m)													
	12	15	18	21	24	27	30	33	36	39	42	45	48	51
4.4	6.50													
4.5	6.50													
5.0	6.50	6.50												
5.5	6.50	6.50	6.50											
6.0	6.50	6.50	6.50	6.1m×6.50t	6.6m×6.50t									
7.0	6.50	6.50	6.50	6.50	6.50	7.2m×6.50t	7.7m×6.50t							
8.0	6.50	6.50	6.50	6.50	6.50	6.50	6.50	8.3m×6.50t	8.8m×6.50t					
9.0	6.50	6.50	6.50	6.50	6.50	6.50	6.50	6.50	6.50	9.3m×6.50t	9.9m×6.50t			
10.0	6.50	6.50	6.50	6.50	6.50	6.50	6.50	6.50	6.50	6.50	6.50	10.5m×6.50t	11.0m×6.50t	11.5m×6.50t
12.0	6.50	6.50	6.50	6.50	6.50	6.50	6.50	6.50	6.50	6.50	6.50	6.50	6.50	6.50
14.0	12.7m×6.50t	6.50	6.50	6.50	6.50	6.50	6.50	6.50	6.50	6.50	6.50	6.50	6.50	6.50
16.0		15.3m×6.50t	6.50	6.50	6.50	6.50	6.50	6.50	6.50	6.50	6.50	6.50	6.50	6.50
18.0			17.9m×6.50t	6.50	6.50	6.50	6.50	6.50	6.50	6.50	6.50	6.50	6.50	6.50
20.0				6.50	6.50	6.50	6.50	6.50	6.50	6.50	6.50	6.50	6.45	6.35
22.0				20.5m×6.50t	6.35	6.20	6.10	5.95	5.85	5.75	5.65	5.50	5.40	5.25
24.0					23.1m×5.90t	5.45	5.35	5.20	5.10	5.00	4.90	4.75	4.65	4.50
26.0						25.5m×4.95t	4.75	4.55	4.45	4.35	4.25	4.10	4.00	3.80
28.0							4.20	4.05	3.95	3.80	3.70	3.50	3.40	3.20
30.0							28.3m×4.15t	3.60	3.50	3.35	3.20	3.00	2.85	2.65
32.0								30.8m×3.45t	3.05	2.90	2.75	2.55	2.40	2.20
34.0									33.4m×2.80t	2.55	2.35	2.20	2.05	1.85
36.0										2.20	2.00	1.85	1.70	1.50
38.0											1.75	1.55	1.40	
40.0											38.6m×1.65t	1.30		

- NOTES
1. The rated loads shown do not exceed 78% of tipping load with the machine on firm level ground, and are not less than 1.15 times over-front stability stipulated by the mobile crane construction standards.
 2. To calculate the maximum load that can actually be lifted, deduct weight of all lifting accessories, such as main hook, from figures shown above.

Hook Weight

6.5t Hook	0.18t
-----------	-------

3. Working radius is the horizontal distance from the swing center to the center of gravity of a lifted load.
4. The counterweight is 23.8ton.
5. Be sure to fully extend the side frames before operating the machine.

78% Tipping Load (JIS Rating)

■Crane Ratings (Main Boom with Auxiliary Jib in 360° Working Area)

Unit: ton

Working radius (m)	Boom Length (m)													
	12	15	18	21	24	27	30	33	36	39	42	45	48	51
3.6	70.00													
4.0	64.40	4.2m×61.30t												
4.5	57.55	57.35	4.7m×54.85t											
5.0	51.50	51.40	51.35	5.3m×46.65t										
5.5	44.20	44.10	44.05	43.95	5.8m×40.40t									
6.0	38.65	38.55	38.50	38.40	38.30	6.4m×34.65t	6.9m×30.95t							
7.0	30.80	30.65	30.60	30.50	30.40	30.35	30.30	7.5m×27.25t						
8.0	25.45	25.30	25.25	25.15	25.05	24.95	24.95	24.80	24.75	8.6m×22.20t				
9.0	21.65	21.50	21.40	21.30	21.20	21.10	21.05	20.95	20.90	20.80	9.1m×19.50t	9.7m×18.50t		
10.0	18.75	18.60	18.50	18.40	18.30	18.20	18.15	18.00	17.95	17.85	17.80	17.70	10.2m×17.10t	10.7m×15.80t
12.0	11.6m×14.60t	14.55	14.45	14.30	14.20	14.10	14.05	13.90	13.85	13.75	13.70	13.55	13.45	13.35
14.0		11.85	11.75	11.60	11.50	11.35	11.30	11.15	11.10	11.00	10.90	10.80	10.70	10.55
16.0		14.2m×11.65t	9.80	9.65	9.55	9.40	9.35	9.20	9.10	9.05	8.95	8.80	8.70	8.60
18.0			16.8m×9.20t	8.20	8.05	7.95	7.90	7.70	7.65	7.55	7.45	7.35	7.25	7.10
20.0				19.4m×7.40t	6.95	6.80	6.75	6.55	6.50	6.40	6.30	6.15	6.05	5.95
22.0					6.05	5.90	5.80	5.65	5.55	5.45	5.35	5.25	5.15	5.00
24.0						5.15	5.10	4.90	4.80	4.70	4.60	4.50	4.40	4.25
26.0						24.6m×4.95t	4.45	4.30	4.20	4.10	4.00	3.85	3.75	3.60
28.0							27.2m×4.15t	3.80	3.65	3.55	3.45	3.30	3.20	3.00
30.0								29.8m×3.40t	3.25	3.10	2.95	2.80	2.65	2.45
32.0									2.85	2.70	2.55	2.35	2.25	2.05
34.0									32.4m×2.75t	2.35	2.15	2.00	1.85	1.65
36.0										35.0m×2.15t	1.85	1.65	1.50	1.30
38.0											37.6m×1.60t	1.35		

- NOTES
1. The rated loads shown do not exceed 78% of tipping load with the machine on firm level ground, and are not less than 1.15 times over-front stability stipulated by the mobile crane construction standards.
 2. To calculate the maximum load that can actually be lifted, deduct weight of all lifting accessories, such as main hook, from figures shown above.
 3. Working radius is the horizontal distance from the swing center to the center of gravity of a lifted load.
 4. The counterweight is 23.8ton.
 5. Be sure to fully extend the side frames before operating the machine.
 6. Correlation between the number of falls, maximum rated loads, hook weights are shown in the table below.

Hook capacity (t)	Hook weight (t)	Maximum rated load (t)									
		10	9	8	7	6	5	4	3	2	1
70.0	0.80	70.0	58.5	52.0	45.5	39.0	32.5	26.0	19.5	13.0	—
40.0	0.41				40.0	39.0	32.5	26.0	19.5	13.0	—
15.0	0.36								15.0	13.0	—
6.5	0.18										6.5

78% Tipping Load (JIS Rating)

Crane Ratings (Jib in 360° Working Area)

Unit: ton

Boom length (m)	27						30					
	9		13.5		18		9		13.5		18	
Jib length (m)	10	30	10	30	10	30	10	30	10	30	10	30
Offset angle / Working radius (m)												
9.4	6.50											
10.0	6.50		11.0m × 6.50t				6.50		11.5m × 6.50t			
12.0	6.50	12.1m × 6.50t	6.50		12.6m × 5.90t		6.50	12.7m × 6.50t	6.50		13.1m × 5.90t	
14.0	6.50	6.50	6.50	15.0m × 6.50t	5.70		6.50	6.50	6.50	15.6m × 6.50t	5.80	
16.0	6.50	6.50	6.50	6.50	5.40	17.9m × 4.30t	6.50	6.50	6.50	6.50	5.50	
18.0	6.50	6.50	6.50	6.25	5.15	4.30	6.50	6.50	6.50	6.35	5.25	18.5m × 4.30t
20.0	6.50	6.50	6.50	5.85	4.95	4.15	6.50	6.50	6.50	6.00	5.05	4.20
22.0	6.40	6.50	6.50	5.55	4.75	4.05	6.30	6.45	6.50	5.70	4.85	4.10
24.0	5.60	5.70	5.80	5.25	4.55	3.95	5.55	5.65	5.70	5.40	4.65	4.00
26.0	4.95	5.05	5.15	5.00	4.40	3.85	4.90	5.00	5.05	5.15	4.50	3.90
28.0	4.45	4.50	4.60	4.75	4.25	3.65	4.35	4.40	4.50	4.65	4.35	3.75
30.0	3.95	4.00	4.10	4.25	4.10	3.50	3.90	3.95	4.05	4.15	4.15	3.60
32.0	3.55	3.60	3.70	3.80	3.80	3.35	3.45	3.50	3.60	3.75	3.75	3.45
34.0	33.3m × 3.35t	33.8m × 3.25t	3.35	3.40	3.45	3.20	3.10	3.15	3.25	3.35	3.35	3.30
36.0			3.05	3.10	3.15	3.10	35.9m × 2.80t	2.80	2.95	3.00	3.05	3.20
38.0			37.5m × 2.85t	2.80	2.85	2.95		36.4m × 2.70t	2.65	2.70	2.75	2.90
40.0				38.3m × 2.75t	2.60	2.65			2.35	2.40	2.50	2.60
42.0					41.7m × 2.40t	2.40			40.1m × 2.35t	40.9m × 2.25t	2.25	2.30
44.0						42.8m × 2.25t					2.00	2.05
46.0											44.3m × 1.95t	45.4m × 1.85t

Boom length (m)	33						36					
	9		13.5		18		9		13.5		18	
Jib length (m)	10	30	10	30	10	30	10	30	10	30	10	30
Offset angle / Working radius (m)												
10.5	6.50						11.0m × 6.50t					
12.0	6.50	13.2m × 6.50t	12.1m × 6.50t			13.7m × 5.90t	6.50	13.7m × 6.50t	12.6m × 6.50t			
14.0	6.50	6.50	6.50			5.85	6.50	6.50	6.50			14.2m × 5.90t
16.0	6.50	6.50	6.50	16.1m × 6.50t	5.60		6.50	6.50	6.50	16.7m × 6.50t	5.65	
18.0	6.50	6.50	6.50	6.50	5.35	19.0m × 4.30t	6.50	6.50	6.50	6.50	5.45	19.6m × 4.25t
20.0	6.50	6.50	6.50	6.15	5.15	4.20	6.50	6.50	6.50	6.25	5.20	4.25
22.0	6.15	6.35	6.35	5.85	4.95	4.10	6.05	6.25	6.25	5.95	5.05	4.15
24.0	5.35	5.55	5.55	5.55	4.75	4.00	5.30	5.45	5.45	5.70	4.85	4.05
26.0	4.75	4.85	4.90	5.15	4.60	3.95	4.65	4.80	4.80	5.05	4.70	3.95
28.0	4.20	4.30	4.35	4.55	4.45	3.85	4.10	4.20	4.25	4.45	4.40	3.90
30.0	3.70	3.80	3.85	4.05	4.00	3.70	3.60	3.70	3.75	3.95	3.90	3.75
32.0	3.30	3.35	3.45	3.60	3.60	3.55	3.20	3.30	3.35	3.55	3.50	3.60
34.0	2.90	3.00	3.10	3.20	3.20	3.40	2.80	2.85	3.00	3.15	3.10	3.35
36.0	2.60	2.60	2.75	2.90	2.90	3.05	2.45	2.50	2.60	2.75	2.75	3.00
38.0	2.25	2.30	2.45	2.55	2.60	2.75	2.10	2.15	2.30	2.45	2.45	2.65
40.0	38.5m × 2.20t	39.0m × 2.15t	2.15	2.25	2.30	2.45	1.85	1.85	2.00	2.10	2.15	2.35
42.0			1.90	1.95	2.05	2.15	41.1m × 1.70t	41.6m × 1.65t	1.75	1.85	1.90	2.05
44.0			42.7m × 1.85t	43.5m × 1.75t	1.80	1.90			1.55	1.60	1.65	1.80
46.0					1.60	1.65			45.3m × 1.40t	1.35	1.45	1.55
48.0					45.9m × 1.50t	1.45				45.1m × 1.35t		1.35

Continued on next page

78% Tipping Load(JIS Rating)

■ Crane Ratings(Jib in 360° Working Area)

Unit: ton

Boom length(m)	39						42					
Jib length(m)	9		13.5		18		9		13.5		18	
Offset angle(°) Working radius(m)	10	30	10	30	10	30	10	30	10	30	10	30
11.6	6.50											
12.0	6.50		13.2m×6.50t				12.1m×6.50t		13.7m×6.50t			
14.0	6.50	14.3m×6.50t	6.50		14.7m×5.90t		6.50	14.8m×6.50t	6.50		15.3m×5.90t	
16.0	6.50	6.50	6.50	17.2m×6.50t	5.75		6.50	6.50	6.50	17.8m×6.50t	5.80	
18.0	6.50	6.50	6.50	6.50	5.50		6.50	6.50	6.50	6.50	5.60	
20.0	6.50	6.50	6.50	6.40	5.30	20.1m×4.25t	6.50	6.50	6.50	6.50	5.35	20.7m×4.25t
22.0	5.95	6.20	6.15	6.10	5.10	4.15	5.85	6.10	6.05	6.20	5.20	4.20
24.0	5.15	5.35	5.35	5.70	4.95	4.05	5.05	5.30	5.25	5.60	5.00	4.10
26.0	4.50	4.70	4.70	5.00	4.75	4.00	4.40	4.60	4.60	4.90	4.75	4.00
28.0	3.95	4.10	4.15	4.40	4.30	3.90	3.85	4.00	4.05	4.30	4.20	3.95
30.0	3.50	3.60	3.65	3.90	3.80	3.85	3.35	3.50	3.55	3.80	3.70	3.85
32.0	3.05	3.15	3.25	3.45	3.40	3.65	2.90	3.05	3.10	3.35	3.25	3.60
34.0	2.65	2.75	2.85	3.05	3.00	3.25	2.50	2.60	2.70	2.90	2.85	3.20
36.0	2.30	2.35	2.50	2.65	2.65	2.90	2.15	2.25	2.35	2.55	2.50	2.80
38.0	2.00	2.05	2.15	2.30	2.30	2.55	1.80	1.90	2.00	2.20	2.15	2.45
40.0	1.70	1.75	1.90	2.00	2.00	2.25	1.55	1.60	1.75	1.90	1.85	2.10
42.0	1.45	1.50	1.65	1.75	1.75	1.95	1.30	1.35	1.45	1.60	1.60	1.80
44.0			1.40	1.45	1.55	1.70				1.35	1.35	1.55
46.0					1.30	1.45						1.30

Boom length(m)	45					
Jib length(m)	9		13.5		18	
Offset angle(°) Working radius(m)	10	30	10	30	10	30
12.7	6.50					
14.0	6.50	15.4m×6.50t	14.3m×6.50t		15.8m×5.90t	
16.0	6.50	6.50	6.50		5.85	
18.0	6.50	6.50	6.50	18.3m×6.50t	5.65	
20.0	6.50	6.50	6.50	6.50	5.45	21.2m×4.25t
22.0	5.75	6.00	5.95	6.30	5.25	4.20
24.0	4.95	5.20	5.15	5.50	5.10	4.10
26.0	4.30	4.50	4.50	4.80	4.60	4.05
28.0	3.70	3.90	3.90	4.20	4.05	3.95
30.0	3.20	3.40	3.40	3.70	3.55	3.90
32.0	2.70	2.90	2.95	3.25	3.10	3.50
34.0	2.30	2.45	2.55	2.80	2.70	3.05
36.0	1.95	2.10	2.15	2.40	2.30	2.65
38.0	1.65	1.75	1.85	2.05	2.00	2.30
40.0	1.35	1.45	1.55	1.75	1.70	2.00
42.0			1.30	1.45	1.45	1.70
44.0						1.45

- NOTES
- The rated loads shown do not exceed 78% of tipping load with the machine on firm level ground, and are not less than 1.15 times over-front stability stipulated by the mobile crane construction standards.
 - To calculate the maximum load that can actually be lifted, deduct weight of all lifting accessories, such as main hook, from figures shown above.

Hook Weight

6.5t Hook	0.18t
-----------	-------

- Working radius is the horizontal distance from the swing center to the center of gravity of a lifted load.
- The counterweight is 23.8ton.
- Be sure to fully extend the side frames before operating the machine.
- Correlation between the number of falls, maximum rated loads, hook weights are shown in the table below.

78% Tipping Load(JIS Rating)

■Crane Ratings(Main Boom with Jib in 360° Working Area)

Unit: ton

Boom length(m)	27						30					
Jib length(m)	9		13.5		18		9		13.5		18	
Offset angle(°) Working radius(m)	10	30	10	30	10	30	10	30	10	30	10	30
6.4	34.45	34.00	34.20	33.60	33.85	33.05	6.9m×30.60t	6.9m×30.20t	6.9m×30.35t	6.9m×29.80t	6.9m×30.05t	6.9m×29.30t
7.0	30.05	29.65	29.75	29.25	29.45	28.75	30.05	29.65	29.80	29.25	29.45	28.75
8.0	24.65	24.30	24.40	23.95	24.10	23.50	24.65	24.30	24.40	23.95	24.10	23.50
9.0	20.75	20.50	20.55	20.15	20.25	19.75	20.75	20.45	20.55	20.15	20.25	19.75
10.0	17.85	17.60	17.60	17.30	17.35	16.90	17.85	17.60	17.60	17.30	17.35	16.90
12.0	13.75	13.55	13.50	13.25	13.25	12.95	13.70	13.50	13.50	13.25	13.25	12.90
14.0	11.00	10.85	10.80	10.55	10.50	10.25	10.95	10.80	10.75	10.55	10.50	10.25
16.0	9.05	8.90	8.80	8.65	8.55	8.35	9.00	8.85	8.80	8.60	8.55	8.35
18.0	7.55	7.45	7.35	7.20	7.10	6.95	7.50	7.40	7.30	7.15	7.10	6.90
20.0	6.40	6.30	6.20	6.10	5.95	5.80	6.35	6.25	6.15	6.05	5.95	5.80
22.0	5.50	5.40	5.30	5.20	5.05	4.95	5.45	5.35	5.25	5.15	5.05	4.90
24.0	4.75	4.70	4.55	4.50	4.30	4.20	4.70	4.65	4.50	4.40	4.25	4.10
26.0	24.6m×4.55t	24.6m×4.50t	24.6m×4.35t	24.6m×4.30t	24.6m×4.10t	24.6m×4.00t	4.10	4.00	3.85	3.75	3.55	3.45
27.2							3.75	3.65	3.50	3.40	3.20	3.15

Boom length(m)	33						36					
Jib length(m)	9		13.5		18		9		13.5		18	
Offset angle(°) Working radius(m)	10	30	10	30	10	30	10	30	10	30	10	30
7.5	27.00	26.65	26.75	26.25	26.50	25.80						
8.0	24.50	24.20	24.30	23.85	24.00	23.40	24.45	24.10	24.20	23.75	23.95	23.35
9.0	20.65	20.35	20.40	20.00	20.15	19.65	20.60	20.30	20.35	19.95	20.10	19.60
10.0	17.70	17.45	17.50	17.15	17.25	16.80	17.65	17.40	17.45	17.10	17.20	16.75
12.0	13.60	13.40	13.35	13.10	13.15	12.80	13.50	13.30	13.30	13.05	13.10	12.75
14.0	10.80	10.65	10.60	10.40	10.40	10.10	10.75	10.60	10.55	10.35	10.35	10.05
16.0	8.85	8.70	8.65	8.45	8.40	8.20	8.80	8.65	8.60	8.40	8.35	8.15
18.0	7.35	7.25	7.15	7.00	6.95	6.75	7.30	7.15	7.10	6.95	6.90	6.70
20.0	6.20	6.10	6.00	5.90	5.80	5.65	6.15	6.05	5.95	5.80	5.75	5.55
22.0	5.30	5.20	5.10	5.00	4.90	4.70	5.20	5.10	5.05	4.90	4.80	4.60
24.0	4.55	4.45	4.35	4.20	4.05	3.90	4.45	4.35	4.25	4.10	3.95	3.80
26.0	3.90	3.80	3.65	3.55	3.40	3.25	3.75	3.65	3.55	3.40	3.25	3.15
28.0	3.30	3.20	3.05	3.00	2.80	2.70	3.15	3.10	2.95	2.85	2.70	2.55
30.0	29.8m×2.85t	29.8m×2.80t	29.8m×2.65t	29.8m×2.55t	29.8m×2.35t	29.8m×2.30t	2.65	2.60	2.45	2.35	2.20	2.10
32.0							2.25	2.20	2.05	1.95	1.75	1.70
32.4							2.15	2.10	1.95	1.90	1.70	1.60

Continued on next page

78% Tipping Load(JIS Rating)

■Crane Ratings(Main Boom with Jib in 360° Working Area)

Unit: ton

Boom length(m)	39						42					
Jib length(m)	9		13.5		18		9		13.5		18	
Offset angle(°) Working radius(m)	10	30	10	30	10	30	10	30	10	30	10	30
8.6	21.90	21.60	21.70	21.30	21.45	20.90						
9.0	20.50	20.20	20.30	19.90	20.05	19.50	9.1m×19.50t	9.1m×19.50t	9.1m×19.50t	9.1m×19.50t	9.1m×19.50t	9.1m×19.15t
10.0	17.55	17.30	17.35	17.00	17.10	16.65	17.50	17.25	17.30	16.95	17.05	16.60
12.0	13.45	13.25	13.25	12.95	13.00	12.65	13.35	13.15	13.15	12.90	12.95	12.60
14.0	10.65	10.50	10.50	10.25	10.25	9.95	10.60	10.40	10.40	10.20	10.20	9.90
16.0	8.70	8.55	8.50	8.30	8.30	8.05	8.60	8.45	8.40	8.25	8.20	7.95
18.0	7.20	7.10	7.00	6.85	6.80	6.60	7.10	7.00	6.95	6.75	6.75	6.50
20.0	6.05	5.95	5.85	5.70	5.65	5.50	5.95	5.85	5.80	5.65	5.55	5.40
22.0	5.10	5.00	4.95	4.80	4.70	4.50	5.00	4.90	4.85	4.70	4.60	4.40
24.0	4.35	4.25	4.10	4.00	3.85	3.70	4.20	4.10	4.00	3.85	3.75	3.55
26.0	3.65	3.55	3.40	3.30	3.15	3.00	3.50	3.40	3.30	3.15	3.05	2.90
28.0	3.05	2.95	2.85	2.75	2.60	2.45	2.90	2.80	2.70	2.60	2.45	2.30
30.0	2.55	2.45	2.35	2.25	2.10	1.95	2.40	2.30	2.20	2.10	1.95	1.80
32.0	2.10	2.05	1.90	1.80	1.65	1.55	1.95	1.90	1.75	1.65	1.50	1.40
34.0	1.75	1.70	1.55	1.45	1.30		1.60	1.50	1.35	1.30		
35.0	1.55	1.50	1.35	1.30								

Boom length(m)	45					
Jib length(m)	9		13.5		18	
Offset angle(°) Working radius(m)	10	30	10	30	10	30
9.7	18.25	17.95	18.05	17.70	17.80	17.35
10.0	17.40	17.15	17.20	16.85	16.95	16.50
12.0	13.25	13.05	13.05	12.80	12.85	12.50
14.0	10.50	10.30	10.30	10.05	10.10	9.80
16.0	8.50	8.35	8.30	8.10	8.10	7.85
18.0	7.00	6.85	6.80	6.65	6.60	6.40
20.0	5.85	5.70	5.65	5.50	5.45	5.25
22.0	4.90	4.75	4.70	4.50	4.45	4.25
24.0	4.05	3.95	3.85	3.70	3.60	3.40
26.0	3.35	3.25	3.15	3.00	2.90	2.75
28.0	2.75	2.65	2.55	2.40	2.30	2.15
30.0	2.25	2.15	2.05	1.95	1.80	1.65
32.0	1.80	1.70	1.60	1.50	1.35	
34.0	1.40	1.35				

- NOTES
1. The rated loads shown do not exceed 78% of tipping load with the machine on firm level ground, and are not less than 1.15 times over-front stability stipulated by the mobile crane construction standards.
 2. To calculate the maximum load that can actually be lifted, deduct weight of all lifting accessories, such as main hook, from figures shown above.
 3. Working radius is the horizontal distance from the swing center to the center of gravity of a lifted load.
 4. The counterweight is 23.8ton.
 5. Be sure to fully extend the side frames before operating the machine.
 6. Correlation between the number of falls, maximum rated loads, hook weights are shown in the table below.

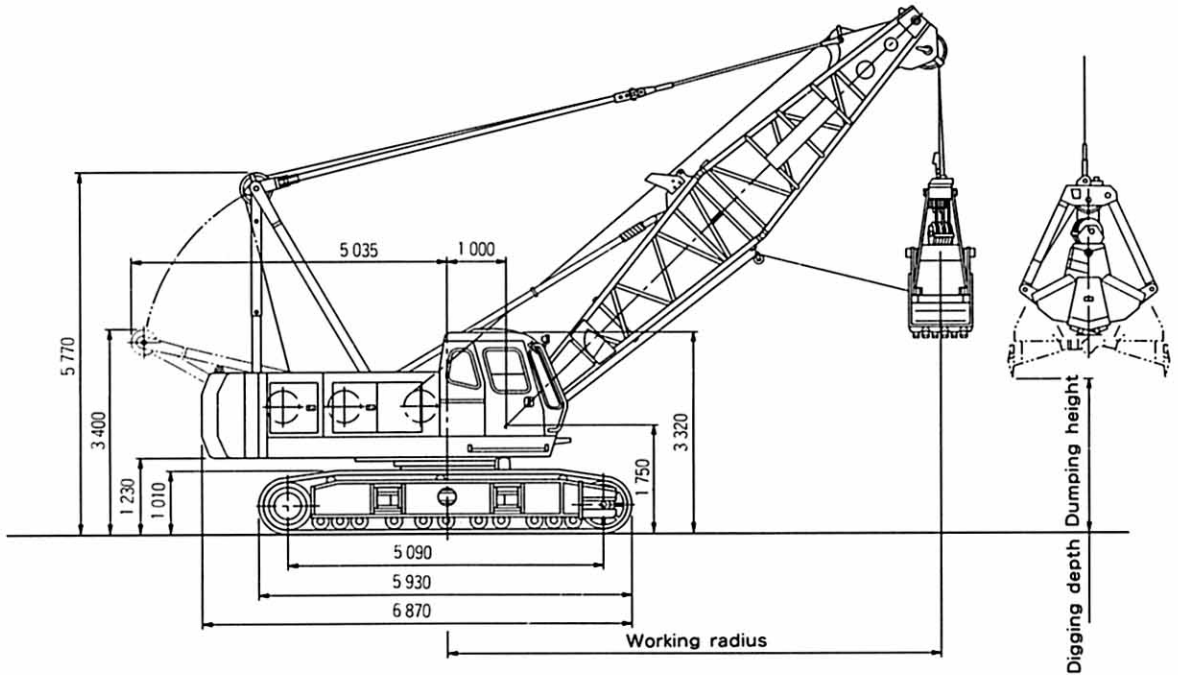
Hook capacity (t)	Hook weight (t)	Maximum rated load (t)						
		6	5	4	3	2	1	
70.0	0.80	34.45	32.5	26.0	19.5	13.0	—	
40.0	0.41	34.45	32.5	26.0	19.5	13.0	—	
15.0	0.36				15.0	13.0	—	
6.5	0.18						6.5	

■ Component Weights and Dimensions for Transport

Component		Weight(t)	Q'ty	Length×Width×Height(m)			Remarks
Basic machine	Basic machine	36.8	1	7.98	3.20	3.40	Including gantry, ropes and side frames. Excluding counter weight.
	Basic machine	22.4	1	6.96	3.20	3.02	Including gantry and ropes. Excluding side frames and counter weight.
	Side frame	7.2	2	5.93	0.92	1.01	
	Gantry	1.2	1	3.17	1.33	0.62	
	Aux.counter weight	0.6	2	0.69	0.29	0.67	
	Counter weight	7.4	1	3.20	0.62	1.37	Inner
	Counter weight	7.9	1	3.20	0.73	1.37	Center
	Counter weight	8.5	1	3.20	0.71	1.48	Outer
Tower front	Lower tower	0.92	1	5.16	1.63	1.72	
	1.5m tower insert. Lower	0.45	1	1.62	1.53	1.98	
	1.5m tower insert. Upper	0.28	1	1.62	1.51	1.52	
	3m boom insert	0.44	1	3.12	1.53	1.61	
	6m boom insert	0.73	1	6.12	1.53	1.61	
	9m boom insert	0.99	1	9.12	1.53	1.61	
	9m(B)boom insert	1.0	1	9.12	1.53	1.62	
	Upper tower	0.69	1	2.77	1.52	2.38	Guide roller excluded
	Swing levers	0.66	1	4.68	1.56	0.79	3 levers included
	Tower stop. right	0.33	1	5.68	0.23	0.32	
	Tower stop. left	0.33	1	5.68	0.20	0.41	
	Jib Boom, Lower	0.48	1	6.92	1.50	0.98	Jib stop included
	3m tower jib insert	0.15	1	3.08	1.25	1.09	
	6m tower jib insert	0.26	1	6.08	1.25	1.09	
	Jib boom, Upper	0.43	1	6.98	1.23	1.07	
	Guide Roller	0.09	1	2.82	0.79	0.28	
	Hanger(Tower Jib)	0.23	1	1.44	0.80	0.70	
	Bridle(Tower Jib)	0.19	1	0.99	0.68	0.62	
	Bridle(Tower Boom)	0.28	1	1.72	0.69	0.28	
	15ton hook	0.36	1	1.36	0.62	0.31	
6.5ton hook	0.18	1	0.84	0.30	0.30		

■Dimensions

Unit:mm



■Specifications

Bucket capacity	m ³	0.8/1.0/1.2
Allowable clamshell gross weight	ton	6.0
Boom length	m	9~18
Max.digging depth	m	36
Suspend line speeds	m/min	*1 74/37 *2 100/65/32
Open/close line speeds	m/min	*1 74/37 *2 100/65/32
Boom hoist/lower line speeds	m/min	*1 60 *2 53
Travel speeds	km/h	*1 1.5/11 *2 1.3/0.9
Ground pressure	kPa(kgf/cm ²)	79.4(0.81)
Operating weight	ton	66.7(9m boom+1.2m ³ bucket)

■Clamshell Bucket

Capacity(m ³)	Weight(t)	Use
0.8	2.0	Excavation
1.0	2.45	Excavation
1.2	2.4	Excavation(light-duty)

- NOTES
1. Data is expressed in SI units, along with conventional units in ().
 2. Other specifications, not shown, are similar to those for the crane.
 3. *1 Data in the bucket mode(*2 crane mode)will vary with the load.

■Working Ranges

Boom length	m	9				12				15				18			
		35	45	55	65	35	45	55	65	35	45	55	65	35	45	55	65
Boom angle	Degree																
Working radius	m	8.8	7.9	6.7	5.4	11.3	10.0	8.4	6.7	13.7	12.1	10.2	7.9	16.2	14.2	11.9	9.2
Rated load	ton	6.00	6.00	6.00	6.00	6.00	6.00	6.00	6.00	6.00	6.00	6.00	6.00	6.00	6.00	6.00	6.00
Bucket dumping height	m	1.5	2.7	3.8	4.6	3.2	4.9	6.3	7.3	4.9	7.0	8.7	10.0	6.6	9.1	11.2	12.8
0.8m ³ bucket																	
1.0m ³ bucket	m	1.3	2.5	3.6	4.4	3.0	4.7	6.1	7.1	4.7	6.8	8.5	9.8	6.5	8.9	11.0	12.6
1.2m ³ bucket	m	1.1	2.3	3.4	4.2	2.8	4.5	5.9	6.9	4.5	6.6	8.3	9.6	6.2	8.7	10.8	12.4

- NOTES
1. Rated loads for clamshell do not exceed 90% those for crane.
 2. The rated loads shown are upper limits determined by the following equation. Please select a bucket in such a manner that its rated load does not exceed the rated load shown below, according to kinds of the loads handled.

$$\text{Rated load} = \text{Bucket capacity(m}^3\text{)} \times \text{Specific gravity of load(ton/m}^3\text{)} + \text{Bucket weight(ton)}$$
 Be careful that brake will be overheated if the bucket is too heavy even within the rated loads.
 3. Working radius is the horizontal distance from the swing center to the center of gravity of lifted load.
 4. The bucket weight is 2.45ton.(Max)
 5. The counterweight is 23.8ton.
 6. Be sure to fully extend the side frames before operating the machine.
 7. Free fall using brake will vary with operating conditions such as bucket weight and work cycle, but its height should be within 10m.

■ STANDARD EQUIPMENT

BASIC MACHINE

Undercarriage

- Crawler-type undercarriage (with 760mm shoes)
- Side frame extend cylinder (1pc)

Upperstructure

- Front lights (2pcs)
- Rearview mirrors (left and right)
- Hoist drum check mirror
- Centralized lubrication system (for gantry and swing circle)
- Electric refuel device
- Under-cover (at upperstructure bottom)
- Cab climbing steps
- Ultra slow speed controller
- Drum rotation sensing system
- 23.8ton counterweight
- Standard tool kit

Cab

- Intermittent-wipers (front and roof windows)
- Washers (front and roof windows)
- Rolled sunshade (roof windows)
- Sunvisor
- Floor mat
- Room light
- Auto-tuning clock radio (AM)
- Cigarette lighter
- Ashtray
- Brake mode selector switch (interlocked)
- Work mode selector (interlocked)
- Electric tilt-type stand

Safety Devices

- Swing lock
- Drum pawl lock (main and auxiliary hoist, and boom raise)
- Swing alarm
- Fail safe brake system
- Pilot control shut-off lever
- Before-work check monitor

FRONT ATTACHMENTS

Crane

- 9m basic boom (lower 5m, upper 4m)
- Boom stop
- Boom angle indicator
- 70ton hook
- Main hoist rope ($\phi 22\text{mm} \times 215\text{m}$)
- Boom raise rope ($\phi 16\text{mm} \times 135\text{m}$)
- Moment limiter
- Overhoist prevention device (main hook, boom raise, secondary)

Clamshell

- 9m basic boom (lower 5m, upper 4m)
- Boom stop
- Boom angle indicator
- Open/close and suspend rope disengagement prevention device (for tubular chord boom)
- Open/close rope ($\phi 22\text{mm} \times 67\text{m}$)*
- Suspend rope ($\phi 22\text{mm} \times 60\text{m}$)*
- Hydraulic tagline ($\phi 10\text{mm} \times 45\text{m}$ rope included) and Boom raise rope ($\phi 16\text{mm} \times 135\text{m}$)

※ Open/close and suspend ropes are determined based on 18m boom length and 12m digging depth.



A series of horizontal dotted lines for writing, spanning the width of the page.





A series of horizontal dotted lines for writing, spanning the width of the page.



© **Hitachi Construction Machinery Co., Ltd.**

Head Office: Nippon Bidg., 6-2, 2-chome, Ohtemachi,
Chiyoda-ku, Tokyo 100, Japan

Telephone: Tokyo (03) 3245-6390

Facsimile : Tokyo (03) 3246-2609

*These specifications are subject to change without notice
illustrations and photos show the standard models, and may or may not include optional
equipment, accessories, and all standard equipment.*