

STANDARD EQUIPMENT		
	42ZV-2	45ZV-2
Alarms (Audible):		
Brake Oil Level		●
Engine Coolant Temp		●
Engine Oil Pressure		●
Alarms (Visual):		
Air Filter		●
Brake Oil Level	●	●
Battery Discharge	●	●
Engine Coolant Temp		●
Engine Oil Pressure	●	●
HST Warning		●
Machine Stop		●
Machine Service		●
Alternator	60 AMP	80 AMP
Battery	12V 490CCA	12V 620CCA
Brake (Parking): Spring applied; Oil Pressure Released; Enclosed Wet Disc	●	●
Brake (Service): Enclosed Wet Disc; Full Hydraulic System	●	●
Bucket, Coupler-Type	●	●
Bucket Leveler	●	●
Cold Start Aid – Glow Plugs	●	●
Coupler, Hydraulic	Universal	Hook-type (Std) Universal (Opt)
Counterweight	●	●
Drawbar	●	●
Easy Clean Floor	●	●
Engine Fuel Filter w/Water Separator	●	●
Engine Coolant Reservoir	●	●
Fenders	●	●
Gauges		
Engine Coolant Temp	●	●
Fuel	●	●
Hourmeter	●	●
Hydraulic Oil Level, Sight	●	●
Horn, Electric	●	●
Hydraulic System, 3-Spool Valve	●	●

STANDARD EQUIPMENT, CONT.		
	42ZV-2	45ZV-2
Inching Pedal Function	●	●
Indicators:		
Clearance Light		●
Engine Pre-heater	●	●
Forward/Reverse	●	●
High Beam		●
Parking Brake	●	●
Turn Signals	●	●
Working Light (Opt Equipment)		●
Lifting Eyes	●	●
Limited Slip Differentials (F&R)	●	
Linkage (Z-type, sealed)	●	●
Lights: (2) Headlights (2) Turn Signals (Front) (2) Stop/Tail/Turn Lights (1) Backup	●	●
Neutral Safety Start	●	●
Radiator, Side-by-Side w/Oil Cooler	●	●
Reverse Alarm	●	●
ROPS/FOPS Canopy	●	●
Safety Articulation Locking Bar	●	●
Seat, Adjustable Suspension	●	●
Seat Belt	●	●
Shift Lever Lock	●	●
Vandalism Protection	●	●

OPTIONAL EQUIPMENT		
	42ZV-2	45ZV-2
HVAC (Heat, Vent, A/C)	●	●
Differentials, Manually Locking, Front		●
48" x 48" Pallet Forks	Universal	Universal
Heater Only	●	●
ROPS/FOPS Cab	●	●
Mechanical Coupler		●
Radiator Dust Shield	●	●
Solid Tires	●	●
Delete Standard Bucket	●	●



### HISTORY

Kawasaki Heavy Industries, has over 100 years of experience providing technology solutions. Kawasaki Heavy Industries is a global supplier of innovative engineering with a portfolio ranging from jet turbines to bridge design to construction equipment.

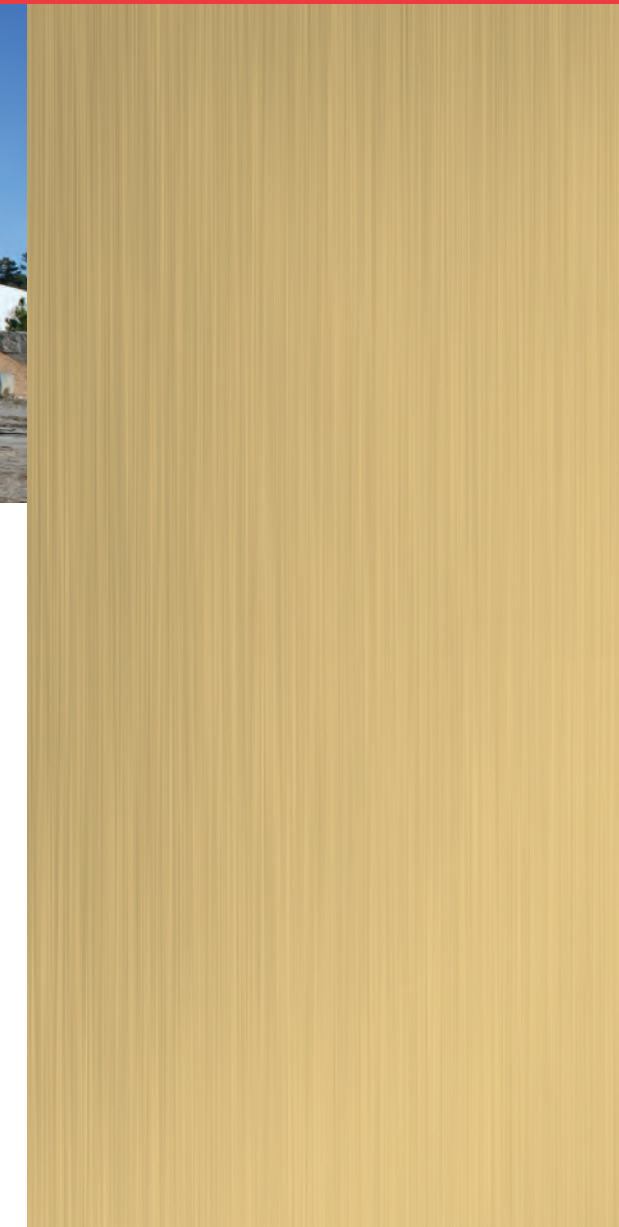
### TECHNOLOGY

Kawasaki is the most experienced manufacturer of articulated wheel loaders in the world. Since introducing our first models in 1962, we have maintained a leadership position in technology, service, and support. Kawasaki articulated wheel loaders incorporate innovative design features coupled with extensive knowledge and experience gained from real-world applications. Kawasaki pioneered Z-Link design to provide unmatched utility, high breakout force and efficiency in its machines.

### TUTT BRYANT EQUIPMENT: AUSTRALIAN DISTRIBUTOR

Tutt Bryant Equipment (formerly BT Equipment) is the leading multi franchised National Distributor of construction equipment and cranes in Australia. Tutt Bryant Equipment deals in the selling and provision of equipment, parts and services through its company owned branches in Brisbane, Sydney, Melbourne, Adelaide, Perth and Darwin plus strategically located independent dealers.

Tutt Bryant Equipment provides a comprehensive selection of quality equipment to a wide range of industries including construction, government sector, infrastructure and the general equipment hire industry. Tutt Bryant Equipment has long lasting supply relationships with key manufacturers including Bomag, Sumitomo, Kato, Kawasaki, Mitsubishi, Mustang, Hitachi-Sumitomo and Yanmar. The total equipment portfolio includes excavators, loaders, tool carriers, compactors, milling and paving machines and cranes.





**HEAD OFFICE**  
Locked Bag 11  
Chester Hill, NSW 2162

6-8 Frengrove Place  
South Granville NSW 2142  
T: 02 9780 7200  
F: 02 9780 7290  
Freecall: 1300 658 888  
W: [www.tuttbryantequipment.com.au](http://www.tuttbryantequipment.com.au)



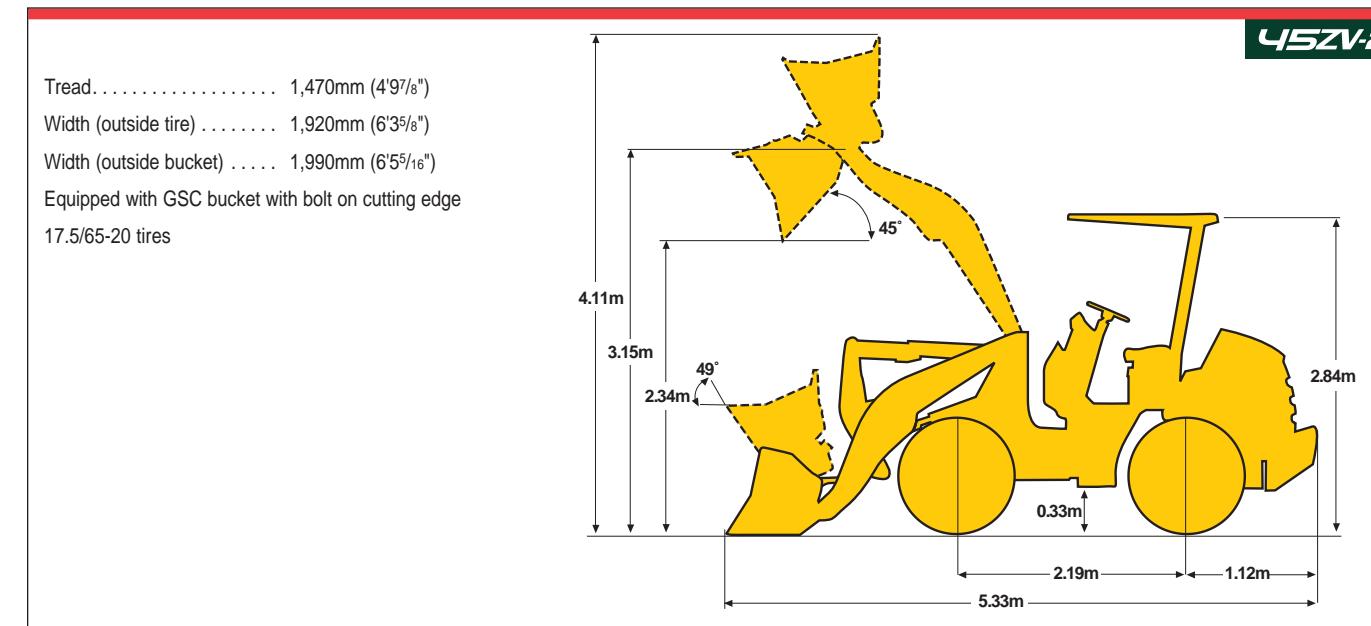
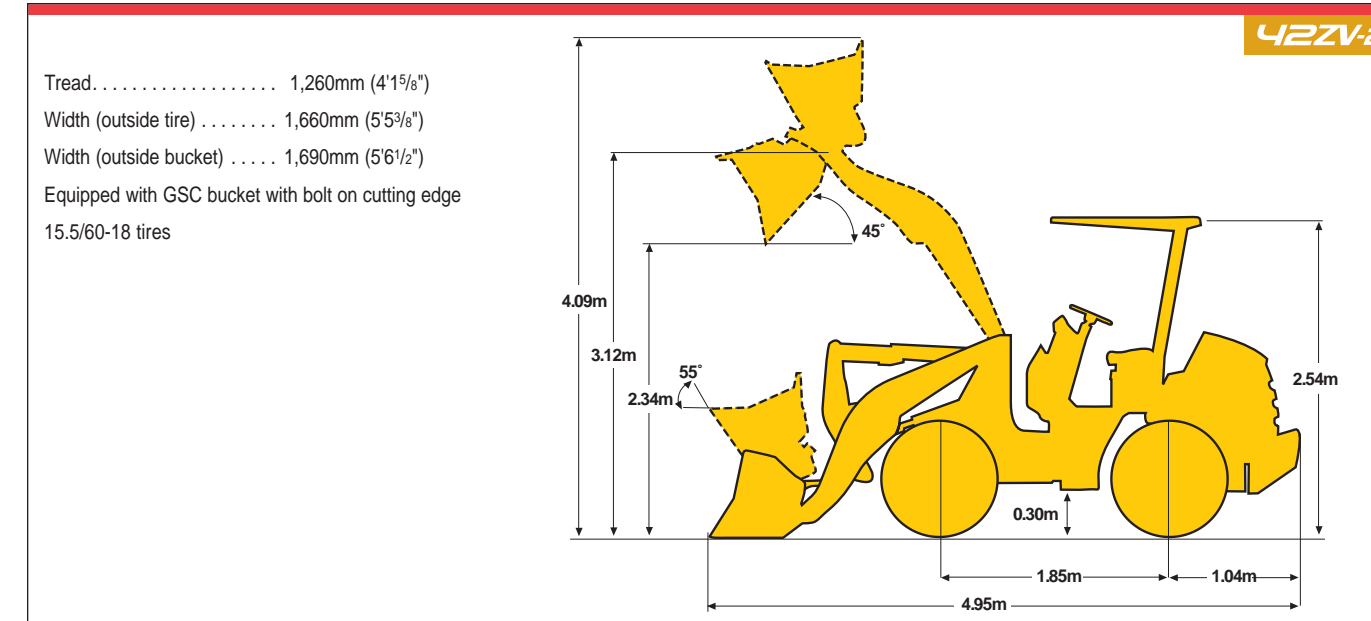
## BUCKET DATA

		42ZV-2		45ZV-2	
		Standard Boom/General Purpose			
		Straight Edge With Bolt-on Cutting Edge		Straight Edge With Bolt-on Cutting Edge	
					
Capacity	Heaped	m <sup>3</sup> (yd <sup>3</sup> )	.60 (.78)	.90 (1.18)	
	Struck	m <sup>3</sup> (yd <sup>3</sup> )	.52 (.68)	.73 (.95)	
Maximum dumping clearance		mm (ft-in)	2,380 (7' 9 3/4")	2,390 (7' 10")	
Dumping reach (to front of bucket edge or tooth)		mm (ft-in)	995 (3' 3 1/4")	990 (3' 4")	
Bucket hinge pin height		mm (ft-in)	3,140 (10' 3 5/8")	3,160 (10' 4 5/8")	
Digging depth		mm (ft-in)	50 (2")	65 (2.65")	
Breakout force		kg (lb)	2,515 (5,500)	3,755 (8,280)	
Bucket tilt-back angle	at ground level		47°	41°	
	at carry position		55°	49°	
Overall	Length	mm (ft-in)	4,955 (16' 3")	5,380 (17' 8")	
	Height	mm (ft-in)	2,565 (8' 5")	2,860 (9' 4 5/8")	
	Width (outside tire)	mm (ft-in)	1,690 (5' 5 3/8")	1,920 (6' 3 5/8")	
	Width (outside bucket)	mm (ft-in)	1,690 (5' 6 1/2")	1,990 (6' 5 1/8")	
Wheel base		mm (ft-in)	1,850 (6' 1/16")	2,200 (7' 2 5/8")	
Minimum turning radius	at outside bucket	mm (ft-in)	3,870 (12' 8 3/8")	4,540 (14' 10 3/4")	
	at center of outside tire	mm (ft-in)	3,125 (10' 3")	3,795 (12' 5 3/8")	
Minimum ground clearance		mm (ft-in)	304 (12")	340 (13 3/8")	
Full articulation angle		degree	41°	40°	
Operating weight (with ROPS Cab)		kg (lb)	4,195 (9,250)	5,540 (12,220)	
Static Tipping Load (with ROPS cab)	Straight	kg (lb)	2,650 (5,840)	3,840 (8,470)	
	Full turn	kg (lb)	2,160 (4,760)	3,250 (7,170)	

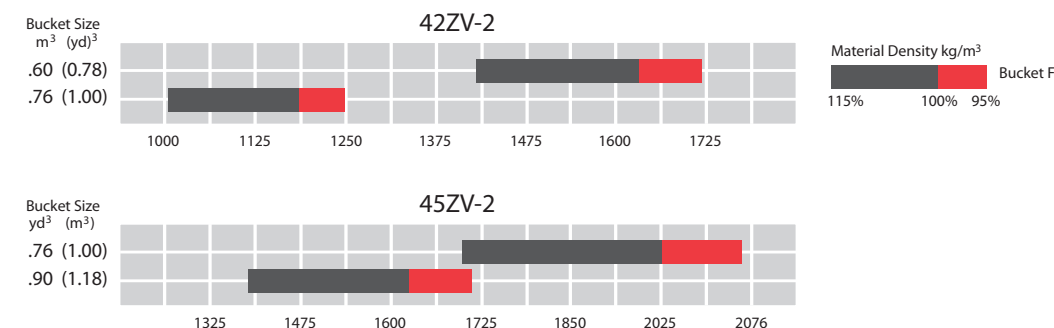
The weight and load figures include counterweight, coupler, GP Bucket, 15.5/60-18 tires (42ZV-2), 17.5/65-20 (45ZV-2) tires, enclosed ROPS Cab, full fuel tank and operator.

Materials and specifications are subject to change without notice and without obligation on the part of the manufacturer. The specifications supplied, while believed to be completely reliable, are not to be taken as warranty for which we assume legal responsibility.

## OPERATING SPECS



## BUCKET SELECTION CHARTS



## FORK DATA

		42ZV-2		45ZV-2	
Fork Tine Length	mm (ft-in)	1,219 (48")	1,219 (48")		
Reach @ Ground Level	mm (ft-in)	895 (2' 11")	755 (2' 6")		
Maximum Reach	mm (ft-in)	1,475 (4' 10")	1,340 (4' 5")		
Reach @ Max Hinge Pin Height	mm (ft-in)	750 (2' 6")	680 (2' 3")		
Fork Height @ Max Reach	mm (ft-in)	1,505 (4' 11")	1,530 (5')		
Fork Height @ Max Hinge Pin Height	mm (ft-in)	3,105 (10' 2")	3,090 (10' 1 1/2")		
Straight Tip Load with Level Arms and Fork (load centered @ 24")	kg (lb)	1,975 (4,350)	2,850 (6,280)		
Full Turn Tip Load with Level Arms and Fork (load centered @ 24")	kg (lb)	1,620 (3,570)	2,410 (5,310)		
Max Operating Load	kg (lb)	980 (2,160)	1,470 (3,240)		
Fork Attachment Weight	kg (lb)	163 (359)	310 (685)		
Operating Weight	kg (lb)	4,065 (8,960)	5,490 (12,100)		
Minimum turning radius (at outside tire)	mm (ft-in)	4,165 (13' 8")	4,520 (14' 10")		
Overall	Length	mm (ft-in)	5,475 (18')	5,860 (19' 3")	
	Height	mm (ft-in)	2,565 (8' 5")	2,860 (9' 4")	
	Width (outside tire)	mm (ft-in)	1,690 (5' 5 3/8")	1,920 (6' 3 5/8")	

The weight and load figures include counterweight, coupler, 1.22m forks, 15.5/60-18 tires (42ZV-2), 17.5/65-20 (45ZV-2) tires, enclosed ROPS Cab, full fuel tank, and operator.

Materials and specifications are subject to change without notice and without obligation on the part of the manufacturer. The specifications supplied, while believed to be completely reliable, are not to be taken as warranty for which we assume legal responsibility.

