



70ZV

 **Kawasaki**

BUCKET DATA

			Standard Boom			High Lift
			General Purpose Bucket With Bolt-on Cutting Edge	General Purpose Bucket With Teeth	Material Handling Bucket With Bolt-on Cutting Edge	Light Material
Capacity	Heaped	yd ³ (m ³)	3.5 (2.7)	3.25 (2.5)	4.0 (3.1)	3.5 (2.7)
	Struck	yd ³ (m ³)	3.0 (2.3)	2.8 (2.1)	3.5 (2.7)	3.0 (2.3)
Maximum dumping clearance		ft-in (mm)	9'2 ¹³ / ₁₆ " (2815)	8'11 ⁵ / ₁₆ " (2725)	9'1 ¹ / ₁₆ " (2745)	10'6 ¹ / ₁₆ " (3200)
Dumping reach (to front of bucket edge or tooth)		ft-in (mm)	3'7 ¹⁵ / ₁₆ " (1090)	3'9 ¹ / ₂ " (1155)	3'9 ¹¹ / ₁₆ " (1160)	3'7 ³ / ₄ " (1110)
Bucket hinge pin height		ft-in (mm)	12'9 ¹ / ₈ " (3890)	12'9 ¹ / ₈ " (3890)	12'9 ¹ / ₈ " (3890)	14'1 ¹ / ₈ " (4270)
Digging depth		ft-in (mm)	4 ³ / ₄ " (120)	5 ⁵ / ₁₆ " (135)	4 ³ / ₄ " (120)	4 ³ / ₄ " (120)
Breakout force		lb (kg)	27,780 (12,600)	30,310 (13,750)	25,530 (11,590)	27,866 (12,640)
Bucket tilt-back angle	at ground level		43.5°	43.5°	43.5°	43°
	at carry position		47.0°	47.0°	47.0°	49°
Overall	Length	ft-in (mm)	24'11 ³ / ₁₆ " (7600)	25'3 ³ / ₄ " (7715)	25'3 ³ / ₈ " (7700)	25'4 ⁷ / ₁₆ " (7730)
	Height	ft-in (mm)	10'11 ⁵ / ₁₆ " (3335)	10'11 ⁵ / ₁₆ " (3335)	10'11 ⁵ / ₁₆ " (3335)	10'11 ⁵ / ₁₆ " (3335)
	Width (outside tire)	ft-in (mm)	8'5 ³ / ₄ " (2585)	8'5 ³ / ₄ " (2585)	8'5 ³ / ₄ " (2585)	8'5 ³ / ₄ " (2585)
	Width (outside bucket)	ft-in (mm)	8'9 ¹ / ₈ " (2670)	8'9 ⁵ / ₈ " (2680)	8'9 ¹ / ₈ " (2670)	8'9 ¹ / ₈ " (2670)
Wheel base		ft-in (mm)	10'1 ¹ / ₈ " (3050)	10'1 ¹ / ₈ " (3050)	10'1 ¹ / ₈ " (3050)	10'1 ¹ / ₈ " (3050)
Minimum turning radius	at outside bucket	ft-in (mm)	19'10 ³ / ₈ " (6055)	19'11 ⁵ / ₁₆ " (6095)	19'11 ³ / ₈ " (6080)	20'1 ¹ / ₄ " (6125)
	at center of outside tire	ft-in (mm)	17'1 ³ / ₈ " (5215)	17'1 ³ / ₈ " (5215)	17'1 ³ / ₈ " (5215)	17'1 ³ / ₈ " (5215)
Minimum ground clearance		ft-in (mm)	1'4" (405)	1'4" (405)	1'4" (405)	1'4" (405)
Full articulation angle		degree	40°	40°	40°	40°
Operating weight (with ROPS Cab)		lb (kg)	31,590 (14,330)	31,390 (14,240)	32,210 (14,610)	32,022 (14,525)
Static tipping load (with ROPS Cab)	Straight	lb (kg)	26,630 (12,080)	26,850 (12,180)	26,080 (11,830)	22,123 (10,035)
	Full turn	lb (kg)	22,860 (10,370)	23,080 (10,470)	22,400 (10,160)	18,949 (8595)

The weight and load figure includes optional counterweight, enclosed ROPS cab, air conditioner, 20.5-25-12 (L-2) tires, full fuel tank and operator.

Materials and specifications are subject to change without notice and without obligation on the part of the manufacturer. The specifications supplied, while believed to be completely reliable, are not to be taken as warranty for which we assume legal responsibility.

WEIGHTS AND DIMENSIONS (SUPPLEMENTAL DATA)

		Operating Weight	Tipping Load			Overall Width (Outside Tire)	Tread	Vertical Dimensions	Overall Length
			Straight	Full Turn					
ROPS Canopy (Instead of ROPS Cab)	lb (kg)	-310 (-140)	-330 (-150)	-290 (-130)	in (mm)				
Remove ROPS Cab (for transport only)	lb (kg)	-1100 (-500)			in (mm)			-10' ¹⁵ / ₁₆ " (-275)	
Remove Optional Counterweight	lb (kg)	-770 (-350)	-1760 (-800)	-1540 (-700)	in (mm)				
Tires: 20.5-25-12PR (L-3)	lb (kg)	+300 (+135)	+220 (+100)	+190 (+85)	in (mm)				
23.5-25-12PR (L-2)	lb (kg)	+1610 (+730)	+1200 (+545)	+1030 (+465)	in (mm)	+2 (+50)	+1 ⁵ / ₈ " (+40)	+2 ³ / ₈ " (+60)	-2 ¹ / ₈ " (-55)
23.5-25-12PR (L-3)	lb (kg)	+2030 (+920)	+1520 (+690)	+1300 (+590)	in (mm)	+2 (+50)	+1 ⁵ / ₈ " (+40)	+2 ³ / ₈ " (+60)	-2 ¹ / ₈ " (-55)
23.5-25-12PR (L-3) with 75% CaCl ₂	lb (kg)	+1800 (+815)	+2690 (+1220)	+2290 (+1040)	in (mm)				
Air conditioner (Deletion)	lb (kg)	-220 (-100)	-240 (-110)	-210 (-95)	in (mm)				
Belly Guard (rear frame)	lb (kg)	+130 (+60)	+120 (+55)	+100 (+45)	in (mm)				

Base Tire 20.5-25-12PR (L-2)

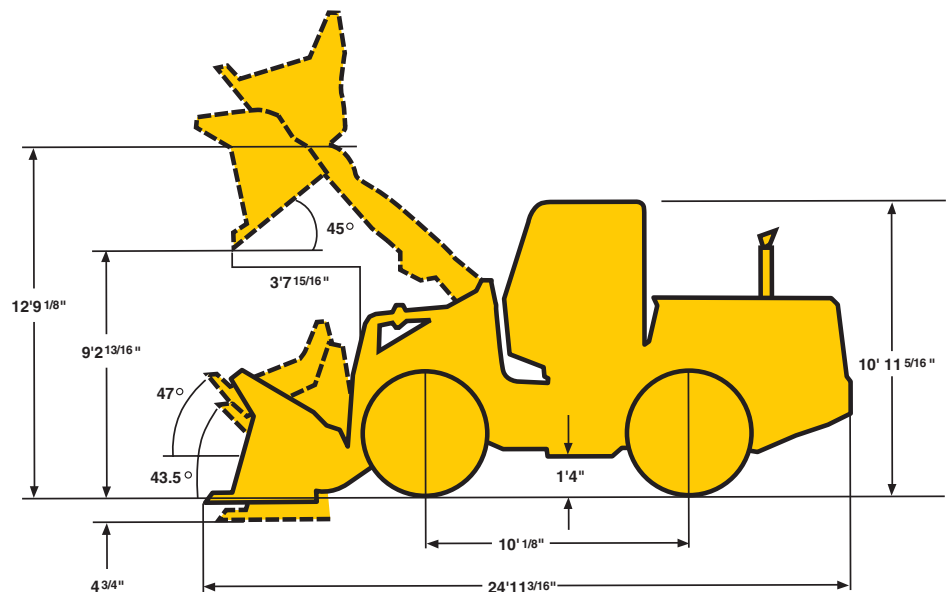
Tread 6'8 ³/₄" (2050mm)

Width (outside tire) 8'5 ³/₄" (2585mm)

Width (outside bucket) 8'9 ¹/₈" (2670mm)

Equipped with GSC bucket with bolt on cutting edge

20.5-25-12PR (L-2) Tire and ROPS Cab



OPERATING SPECIFICATIONS

ENGINE

Make/Model/Fuel Type	Cummins/QSB5.9/Diesel
Type	4-cycle, watercooled, in-line direct injection type with turbo charger and air-cooled intercooler
Net flywheel horsepower	168 HP/2400 RPM
Max Torque	525 lb/ft. @ 1300 RPM
Number of cylinders	6
Bore and stroke	4.02" x 4.72" (102mm x 120mm)
Total displacement	359 in ³ (5890 cm ³)
Alternator	AC24V-1.68kw (70amp)
Starting motor	24V-7.5kw (10.1 HP)
Battery	12V-150AH, 2 units
Governor	All-speed, electrical type

TORQUE CONVERTER AND TRANSMISSION

Torque converter		3 elements, single stage
Torque stall ratio		3.03:1
Main clutches		Wet hydraulic, multi-disc type
Cooling method		Forced circulation type
Transmission		Full power shift, 4 forward, 4 reverse with automatic mode (2nd - 4th) with downshift switch for 2nd - 1st downshifting
Speeds	Forward	1st: 4.5 MPH (7.2 km/hr) 2nd: 7.5 MPH (12.0 km/hr) 3rd: 12.6 MPH (20.3 km/hr) 4th: 23.6 MPH (37.8 km/hr)
	Reverse	1st: 4.5 MPH (7.2 km/hr) 2nd: 7.5 MPH (12.0 km/hr) 3rd: 12.6 MPH (20.2 km/hr) 4th: 23.5 MPH (37.8 km/hr)

SYSTEMS CAPACITY

LOCATION	Gallons	Liters
Engine (coolant)	11.9	(45.0)
Fuel tank (diesel fuel)	75.3	(285.0)
Engine (oil pan)	3.7	(14.0)
Front axle (gear oil)	13.2	(50.0)
Rear axle (gear oil)	13.7	(52.0)
Torque converter and transmission (engine oil)	7.9	(30.0)
Hydraulic system including tank (hydraulic oil)	44.9	(170.0)

HYDRAULIC AND STEERING SYSTEM

Steering type	Articulated frame steering
Steering mechanism	Hydraulic power steering unit, pilot operated type
Lift (boom) cylinder	Two (2) double-acting piston type: 5.5" x 29.7" (140mm x 754mm)
Tilt (bucket) cylinder	One (1) double-acting piston type: 6.3" x 20.1" (160mm x 511mm)
Steering cylinder	Two (2) double-acting piston type: 3.1" x 15.0" (80mm x 380mm)
Main oil pump	Gear type: 17.7 GPM @ 2400 RPM (67 LPM @ 2400 RPM)
Steering oil pump	Gear type: 43.1 GPM @ 2400 RPM (163 LPM @ 2400 RPM)
Pilot oil pump	Gear type: 17.7 GPM @ 2400 RPM (67 LPM @ 2400 RPM)
Relief valve set pressure	Loading 3000 psi (210 kg/cm ²) Steering 3000 psi (210 kg/cm ²)
HYDRAULIC CYCLE TIME*	
Lifting time (at full load)	6.2 sec.
Lowering time (empty)	3.1 sec.
Bucket dumping time	1.2 sec.
TOTAL	10.5 sec.

* Measured in accordance with SAE J732C

AXLE SYSTEM

Drive system		4-wheel drive
Front and rear axle		Full floating banjo type
Tires	Standard	20.5 x 25-12PR (L-2)
	Optional	20.5 x 25-12PR (L-3) 23.5 x 25-12PR (L-2) (L-3) 650/65R25 Low Profile
Reduction and differential gear		Spiral bevel/gear, 1 stage reduction torque, proportioning type
Final reduction gear		Outboard mounted. Internal planetary gear
Oscillation angle		±12° (total 24°)

BRAKE SYSTEM

Service brakes	4 wheel, adjustment free, wet multiple disc brake. Controlled by full hydraulic system. Dual circuit.
Parking/Emergency brake	Spring applied oil pressure released type. Meets MSHA requirements.