

D3K/D4K/D5K

Track-Type Tractors

CATERPILLAR[®]



Cat [®] Cat C4.4 ACERT Diesel Engine	D3K	D4K	D5K
Net power (SAE J1349)	55.2 kW/75 hp	62.6 kW/85 hp	71.6kW/97 hp
Weights			
Operating weight – XL	7795 kg	8147 kg	9408 kg
Operating weight – LGP	8093 kg	8501 kg	9683 kg

D3K, D4K and D5K Track-Type Tractor Specifications

Engine

Engine Model Cat® C4.4 ACERT™

	D3K	D4K	D5K
Power – Gross	60.5 kW/ 82 hp	68.5 kW/ 93 hp	74.5kW/ 101 hp
Power – Net			
ISO 9249	55.2 kW/ 75 hp	62.6 kW/ 85 hp	71.6kW/ 97 hp
EEC 80/1269	55.2 kW/ 75 hp	62.6 kW/ 85 hp	71.6kW/ 97 hp
Displacement	4400 cm ³	4400 cm ³	4400 cm ³
Bore	105 mm	105 mm	105mm
Stroke	127 mm	127 mm	127mm

- Net Power ratings are tested at the reference conditions for the specified standard.
- Ratings at 1900 rpm.
- Net power advertised is the power available at the flywheel when engine is equipped with fan, air cleaner, muffler and alternator.
- No derating required up to 3000 m altitude.

Weights

	D3K	D4K	D5K
Operating weight – XL	7795 kg	8147 kg	9408 kg
Operating weight – LGP	8093 kg	8501 kg	9683 kg

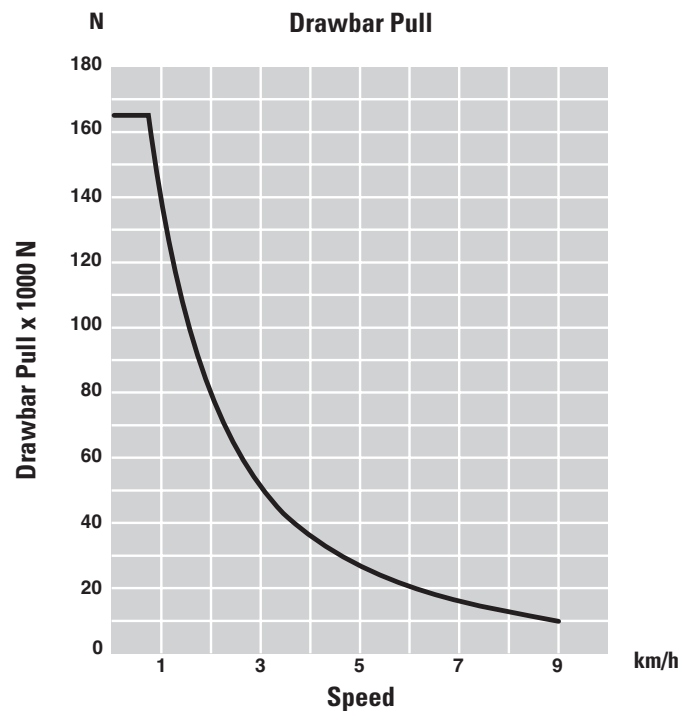
- Operating with dozer blade, canopy ROPS, back-up alarm, operator, coolant, lubricants and full fuel tank.

Ripper

Type: Parallelogram

	D3K	D4K	D5K
Number of shanks	3	3	3
Maximum digging depth			
	337.5 mm	337.5 mm	337.5 mm
Maximum reach at ground line	596 mm	596 mm	555 mm
Maximum ground clearance under tip	448 mm	448 mm	448 mm
Overall width	1710 mm	1710 mm	1710 mm
Height	165 mm	165 mm	165 mm
Weight	554 kg	554 kg	554 kg

Drawbar



Undercarriage

	D3K	D4K	D5K
Number of rollers (each side)	6	7	7
Number of shoes (each side)			
SALT (Sealed and Lubricated Track) Undercarriage	41	43	40
SystemOne Undercarriage	36	38	36
Shoe width			
XL	406 mm	460 mm	510 mm
LGP	635 mm	635 mm	660 mm
Length of track on ground			
XL	2095 mm	2248 mm	2310 mm
LGP	2095 mm	2248 mm	2310 mm
Track gauge			
XL	1495 mm	1550 mm	1600 mm
LGP	1725 mm	1725 mm	1750 mm
Ground contact area			
XL	17 011 cm ²	20 682 cm ²	23 562 cm ²
LGP	26 697 cm ²	28 550 cm ²	30 492 cm ²
Ground pressure			
XL	0.45 bar	0.39 bar	0.39 bar
LGP	0.30 bar	0.29 bar	0.31 bar

- Hydraulic track adjusters.
- Box section track roller frames.
- Bolt-on rear track guiding guards.
- Full length recoil guarding with sprocket guards and wipers.
- Serrated, two-piece split master link (SALT).
- Single-grouser shoes.
- Segmented sprocket (SALT).
- Sealed and lubricated rollers and idlers.

Standards

ROPS

ISO 3471-94, ISO 3164-95

FOPS

ISO 3449-92

Winch

	D3K	D4K	D5K
Weight	610 kg	610 kg	610 kg
Winch drive	Hydrostatic	Hydrostatic	Hydrostatic
Control	Hydraulic	Hydraulic	Hydraulic
Speed	Variable	Variable	Variable
Winch length	705 mm	705 mm	705 mm
Overall width	741 mm	741 mm	741 mm
Drum diameter	254 mm	254 mm	254 mm
Drum width	274 mm	274 mm	274 mm
Throat clearance	171.5 mm	171.5 mm	171.5 mm
Rope diameter			
recommended	16 mm	16 mm	16 mm
optional	19 mm	19 mm	19 mm
Drum capacity			
recommended cable	113 m	113 m	113 m
optional cable	78 m	78 m	78 m
Maximum line pull			
bare drum	18 144 kg	18 144 kg	18 144 kg
full drum	11 340 kg	11 340 kg	11 340 kg
Maximum line m/minspeed			
bare drum	40 m/min	40 m/min	40 m/min
full drum	63 m/min	63 m/min	63 m/min

- Infinitely variable line speed and line pull from 0 to maximum.
- Power in/power out, brake off, free spool (standard equipment).
- Single lever, low effort hydraulic control.
- Precise load control and speed modulation.
- Integral mounted drawbar.
- 3 roller fairlead available. Kit available to add a 4th roller.

D3K, D4K and D5K Track-Type Tractor Specifications

Transmission

All Models	
Drive pumps	2
Track motors	2
Relief valve settings	476 bar
Maximum travel speed	
forward	9 km/h
reverse	10 km/h

- Dual-path, closed loop hydrostatic drive provides infinitely variable speeds from 0-9 km/h forward and 0-10 km/h reverse.
- Full-flow filtering of hydrostatic charge system oil.
- Drive pumps: two variable-displacement, slipper-axial piston pumps mounted tandem-style to engine flywheel housing.
- Track motors: two variable-displacement, link-type piston motors.

Service Refill Capacities

All Models	liter
Fuel tank	195
Crankcase and filter	11
Final drives, XL (each side)	10
Final drives, LGP (each side)	10
Cooling system	22.4
Transmission/hydraulic tank	59.5

Hydraulic Controls

Pump output	73.5 l/min
Relief valve setting	206 bar

- Pump output ratings at 2150 rpm and 69 bar.
- Control positions:
 - Lift cylinders – raise, hold, lower, float.
 - Tilt cylinders – left, hold, right.
 - Angle cylinders – left, hold, right.
 - Ripper cylinders – raise, hold, lower.

Final Drive

Features:

- Double-reduction planetary gear set.
- Mounted independently of track frames to isolate them from machine weight and ground-induced shock loads.

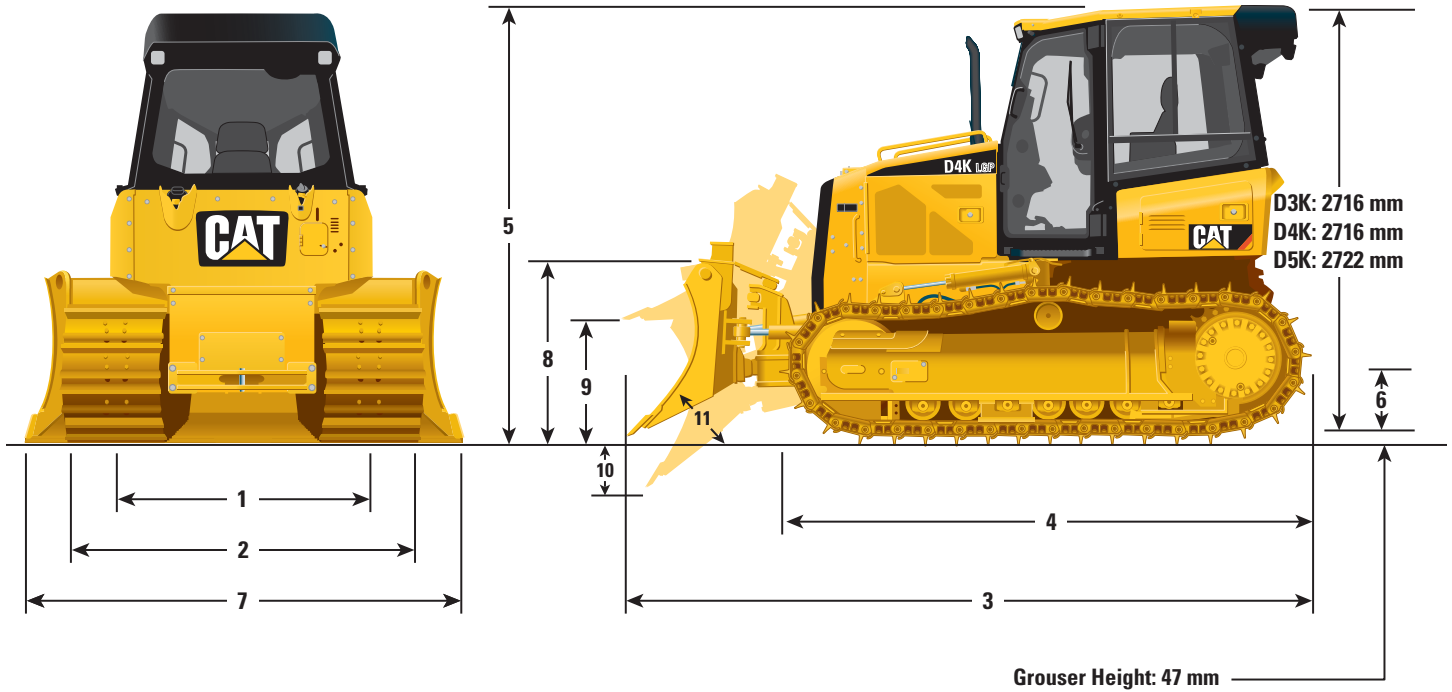
Steering and Braking

Features:

- Full powerturn.
- Counterrotation.
- Single lever steering, speed and direction control.
- Hydrostatic (dynamic) braking through machine drive system using transmission control lever, center brake pedal or decel pedal.

Dimensions

All dimensions are approximate.



	D3K		D4K		D5K				
	XL	LGP	KL	LGP	XL	LGP			
	mm	mm	mm	mm	mm	mm			
1 Track gauge	1495	1725	1550	1725	1600	1750			
2 Width of tractor (std shoes, no blade)	1902	2360	2010	2360	2110	2410			
3 Overall length (with blade)	4266	4255	4274	4266	4321	4294			
4 Length of basic tractor (without blade)	3275	3275	3275	3275	3265	3265			
5 Tractor height	2763	2763	2763	2763	2769	2769			
6 Ground clearance	332	332	332	332	332	332			
Blade	XL	*	LGP	XL	*	LGP	XL	*	LGP
	mm	mm	mm	mm	mm	mm	mm	mm	mm
7 Blade width	2646	2921	3149	2782	2921	3149	2886	2921	3220
8 Blade height	910	860	860	1010	860	910	1050	1010	1010
9 Blade lift height	730	743	730	743	743	708	767	767	787
10 Digging depth	573	573	573	573	590	590	586	572	572
11 Blade cutting edge angle, adjustable	52-58°	52-58°	52-58°	52-58°	52-58°	52-58°	52-58°	52-58°	52-58°
Maximum tilt	387	448	438	387	448	438	402	448	448
Maximum angle (either side)	25°	25°	25°	25°	25°	25°	25°	25°	25°
Blade width at maximum angle	2417	2669	2874	2542	2669	2874	2636	2669	2940
Blade capacity (SAE)	1.52 m ³	1.50 m ³	1.66 m ³	1.98 m ³	1.50 m ³	1.85 m ³	2.09 m ³	1.50 m ³	2.34 m ³

* Intermediate