

D6M

Track-Type Tractor



XL & LGP

Cat® 3116 turbocharged diesel engine

Gross horsepower	114 kW	153 HP
Flywheel horsepower	104 kW	140 HP

Operating weight

XL arrangement	15 530 kg	34,240 lb
LGP arrangement	16 930 kg	37,320 lb

Blade capacity

XL arrangement (VPAT dozer)	3.18 m ³	4.16 yd ³
XL arrangement (SU dozer)	4.28 m ³	5.6 yd ³
LGP arrangement	3.16 m ³	4.11 yd ³

Service Refill Capacities

	Liters	Gallons
Fuel tank	311	82.2
Crankcase and filter	26	6.9
Transmission, bevel gear and steering clutch (includes torque converter)	122	32.2
Final drives (each side)	7	1.8
Cooling system	48.4	12.8
Equipment hydraulic system (includes hydraulic tank)	69.2	18.3
Hydraulic tank	29.2	7.7
Recoil spring compartment	29.5	7.8

Winch

Rugged PA55 winch with freespool.*

Features

- hydraulically actuated multiple-disc wet clutch and brake
- single lever control of clutch and brake functions
- separate lever for freespool operation

Weight	1276.4 kg	2814 lb
Winch length	1120 mm	44.1"
Winch case width	975 mm	38.4"
Flange diameter	504 mm	19.8"
Drum width	330 mm	13"
Drum diameter	254 mm	10"
Cable size:		
Recommended	19 mm	0.75"
Optional	22 mm	0.87"
Drum capacity:		
Recommended cable	122 m	400'
Optional cable	88 m	289'
Oil capacity	74 L	19.55 gal
Cable/ferrule sizes (OD x length)		
54 mm x 65 mm	2.13"	x 2.56"

*PA55 winch is manufactured for Caterpillar by PACCAR Inc.

Track Roller Frame

Tubular design resists torsional loads.

Features

- Lifetime Lubricated rollers and idlers are directly mounted to roller frame
- oscillating roller frames attach to tractor by pivot shaft and pinned equalizer bar
- large pivot bushings operate in an oil reservoir
- equalizer bar saddle connection is low-friction bushing with remote lube line
- recoil system fully sealed and lubricated

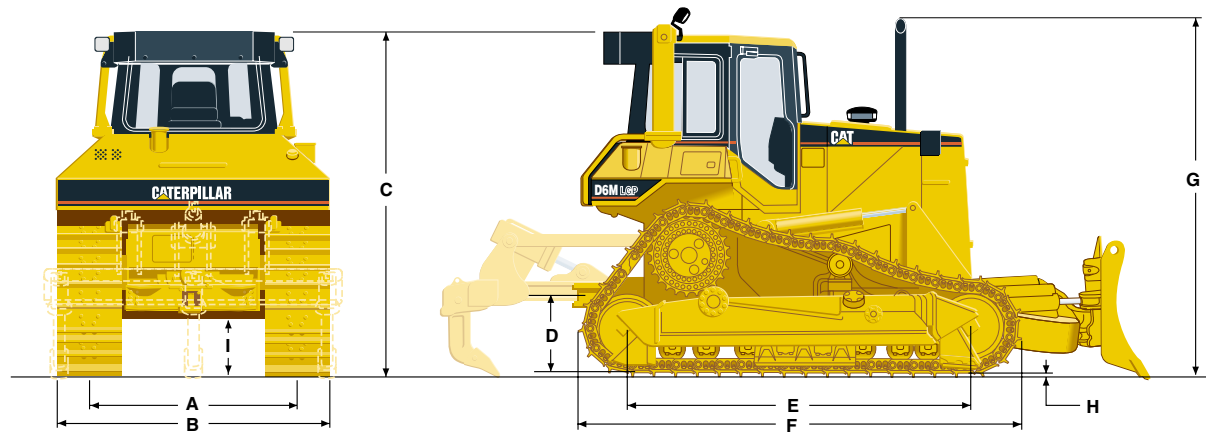
	XL		LGP	
Oscillation:				
front and rear idlers at gauge line	245 mm	9.6"	270 mm	10.6"
at pivot shaft	±2.8°		±2.5°	
Number of rollers (each side)	7		8	
Number of shoes (each side)	40		46	
Width of:				
standard shoes	600 mm	24"	860 mm	34"
optional shoes	560 mm	22"	710 mm	28"
self-cleaning shoes	—		865 mm	34"
Length of track on ground	2550 mm	100"	3102 mm	122"
Track gauge	1890 mm	74"	2160 mm	85"
Ground contact area with:				
560 mm (22") shoes	2.86 m ²	4427 in ²	—	
600 mm (24") shoes (std)	3.06 m ²	4743 in ²	—	
710 mm (28") shoes	—		4.40 m ²	6820 in ²
840 mm (33") shoes**	—		5.21 m ²	8078 in ²
860 mm (34") shoes (std)	—		5.34 m ²	8277 in ²
self cleaning 865 mm (34") shoes	—		5.37 m ²	8324 in ²
Ground Pressure:*				
560 mm (22") shoes	.54 kg/cm ²	7.73 psi	—	
600 mm (24") shoes	.51 kg/cm ²	7.21 psi	—	
710 mm (28") shoes	—		.38 kg/cm ²	5.46 psi
840 mm (33") shoes **	—		.32 kg/cm ²	4.62 psi
860 mm (34") shoes (std)	—		.32 kg/cm ²	4.51 psi
self cleaning 865 mm (34") shoes	—		.31 kg/cm ²	4.48 psi

*Ground pressure is calculated for machine equipped with Heavy Duty (HD) tracks, and Moderate Service (MS) Shoes.

** 840 mm (33") shoes allow the D6M LGP to meet the 3000 mm (118") transportation width restriction with the blade dismounted.

Dimensions

(approximate)



Tractor Dimensions

	XL		LGP	
A. Track gauge	1890 mm	74"	2160 mm	85"
B. Width of tractor with the following attachments:				
Standard shoes without blade	2490 mm	98"	3020 mm	119"
840 mm(33") shoes without blade,			3000 mm	118"
Standard shoes with VPAT blade, angled 25°	2960 mm	117"	3700 mm	146"
C. Machine height from tip of grouser with the following equipment:				
ROPS canopy	3022 mm	119"	3136 mm	123"
ROPS cab	3080 mm	121"	3194 mm	126"
D. Drawbar height (center of clevis) from ground face of shoe	595 mm	23.4"	710 mm	27.9"
E. Length of track on ground	2550 mm	100"	3082 mm	121"
F. Length of basic tractor (with drawbar)	3740 mm	147"	4149 mm	163"
With the following attachments, add to basic tractor length:				
Ripper	1016 mm	40"	1016 mm	40"
PA55 winch	381 mm	15"	381 mm	15"
VPAT blades, straight	1057 mm	42"	1244 mm	49"
VPAT blade, angled 25°	1787 mm	70"	2125 mm	84"
SU blade	1176 mm	46"	—	—
G. Height over stack from tip of grouser	3152 mm	124"	3266 mm	129"
H. Height of grouser	57 mm	2.2"	57 mm	2.2"
I. Ground clearance from ground face of shoe (per SAE J1234)	424 mm	16.7"	538 mm	21.2"

Bulldozer Specifications

	(XL) 6 VPAT Blade		(XL) 6SU Blade		(LGP) 6 VPAT Blade	
Blade capacity (SAE J1265)	3.18 m ³	4.16 yd ³	4.28 m ³	5.57 yd ³	3.16 m ³	4.11 yd ³
Blade width (over end bits)	3274 mm	129"	3190 mm	125.6"	4080 mm	161"
Blade height	1195 mm	47"	1244 mm	49"	1025 mm	40.4"
Digging depth	444 mm	17.5"	520 mm	20.5"	433 mm	17.0"
Ground clearance	925 mm	36.4"	983 mm	38.7"	1024 mm	40.3"
Maximum tilt	497 mm	20"	665 mm	26.2"	598 mm	23.5"
Weight (without hyd. controls)	2372 kg	5229 lb	2427 kg	5351 lb	2819 kg	6215 lb

Ripper

Multi-shank parallelogram design lets you choose one, two or three shanks to match job conditions.

	XL		LGP	
Beam width	2202 mm	86.7"	2202 mm	86.7"
Cross section	216 x 254 mm	8.5 x 10"	216 x 254 mm	8.5 x 10"
Ground clearance under beam (raised)	1090 mm	42.9"	1205 mm	47.4"
(Under tip at full raise)	391.7 mm	15.4"	505.7 mm	19.9"
Number of pockets (teeth)	3		3	
Max. penetration	473.5 mm	18.6"	359.5 mm	14.2"
Max. pryout force	126 000 N	27,780 lb	126 000 N	27,780 lb
Max. penetration force (VPAT blade equipped — power shift)	60 230 N	13,278 lb	71 980 N	15,869 lb
Weight				
With three teeth	1406 kg	3100 lb	1406 kg	3100 lb
Each tooth	78 kg	172 lb	78 kg	172 lb

Standard Equipment

Standard and optional equipment may vary. Consult your Caterpillar dealer for specifics.

Air cleaner, dry-type, with precleaner	Ecology drains	Mirror, rearview
Air cleaner service indicator	Electric hour meter	Muffler
Air intake heater	Electric starting, 24-volt direct	Power train oil:
Alternator, 70-amp	Engine, 3116 turbocharged diesel	- Engine coolant/transmission oil/ equipment hydraulic oil temperature
Armrest, electric adjustment (Finger Tip Control models only)	Engine enclosures, lockable	- Fuel level
Automatic shifting features (Finger Tip Control models only)	Extended life coolant	Precleaner
Auto-kickdown (auto-downshift)	Front pull device	Seat, vinyl suspension with adjustable armrests
Auto shift (2R-1F, 2R-2F)	Fuel gauge	Seat belt, 76 mm (3 inch)
Back up alarm	Fuel priming pump	Segmented sprocket
Batteries (2), 12-volt each, 24-volt total	Gauge package:	Single key start
Blower fan	Temperature of engine	Steering system:
Brake system, service, parking and emergency	coolant/transmission	Lever Steering or
Canopy, ROPS (depending on region)	oil/implement hydraulic oil	Finger Tip Control
Computerized Caterpillar Monitoring System on Finger Tip Control models. Electronic Monitoring system on Lever Steering models.	Fuel level	Track:
Decelerator	Guards:	Adjusters, hydraulic
Diagnostic connector (Finger Tip Control models)	Center section track guiding (LGP only)	Carrier rollers
Drawbar, rigid	Crankcase, normal service	Heavy Duty (HD) Sealed and Lubricated
Dual fuel filters	End track guiding	Track with single grouser, Moderate Service (MS) shoes
	Instrument panel (OROPS)	XL — 40-section, 600 mm (24") LGP — 46-section, 860 mm (34")
	Radiator, hinged	Two-piece master link
	Rear	Transmission, power shift
	Horn	Vandalism protection
	Hydraulics, three-valve for VPAT bulldozer	Water separator
	IMRM radiator	
	Lifetime Lubricated rollers and idlers	
	Lockable storage compartment	

Optional Equipment

Approximate changes in operating weights.

	Kg	Lb		Kg	Lb
Air conditioner	130	287	Ripper, parallelogram		
Bulldozers (see page 17 for weights)			(with three straight teeth)	1406	3100
Cab – ROPS sound suppressed with heater and Cat Contour Series, suspended, adjustable fabric seat	388	855	Each optional curved tooth, replacing straight tooth	9	20
Fan, reversible	8	18	Seat, with adjustable armrests:		
Finger Tip Controls, replacing standard mechanical controls	-66	-145	Air suspended Contour Series, cloth (for cab only)	41	89
Guards:			Contour Series, vinyl, suspended (for cab, standard on canopy)	2	4
Crankcase, heavy duty	62	137	Low back, vinyl	0	0
Fuel tank (for ROPS cab or canopy)	80	176	Sound suppression (for cab)	72	158
Precleaner	7	16	Starting aids:		
Radiator, heavy duty, hinged grill	20	44	Ether starting aid	3	7
Rear screen			Engine coolant heater (dealer installed)	1	2
for ROPS cab without air conditioner	55	121	Heavy duty batteries	0	0
for ROPS cab with air conditioner	53	117	Sweeps		
for ROPS canopy	67	148	ROPS cab	159	350
Track guiding, center section only (XL)	54	119	ROPS canopy	153	337
Track rollers, high flange track guiding arrangement			Tool kit (dealer installed)	15	33
XL	27	60	Track, pair, Heavy Duty Sealed and Lubricated*		
LGP	30	66	XL arrangement, 40-section:		
Track roller, full length:			560 mm (22") MS/HD	-180	-397
XL	206	454	560 mm (22") MS/RBT	252	556
LGP	262	578	560 mm (22") ES/HD	60	132
Heater, dash mounted (for ROPS canopy)	25	55	600 mm (24") MS/RBT	-80	-176
Hydraulics:			600 mm (24") ES/HD	160	353
Two valve for 6SU (XL) bulldozer	-15	-33	LGP arrangement, 46-section:		
Three valve for 6SU (XL) and ripper	12	26	710 mm (28") MS/HD	-370	-816
Four valve for 6VPAT bulldozer and ripper	24	53	710 mm (28") MS/RBT	-60	-132
Lighting system, six lights:			865 mm (34") MS/RBT	0	0
For use with ROPS cab	16	35	860 mm (34") self cleaning/HD	-30	-66
For use with ROPS canopy	16	35	Winch (standard or low speed)	1160	2557
Precleaner with prescreener	5	11	Winch fairlead		
Pump, refueling	10	22	3 Roller	290	639
			4 Roller	322	710

* ES = Extreme Service shoes, MS = Moderate Service shoes, HD = Heavy Duty link track, RBT = Rotating Bushing Track.

Model Comparisons

Former Model	kW	HP	Current Model
D5H	89	120	D6M 104 kW (140 hp)
D5H Series II Standard	89	120	
D5H Series II XL & LGP	97	130	
D6C	104	140	
D6D	104-119	140-160	
D6E	116	155	