

D3G, D4G, D5G

Track-type Tractors



	D3G	D4G	D5G
Cat® Engine	3046 T	3046 T	3046 T
Gross Power	57 kW/77 hp	65 kW/87 hp	74 kW/99 hp
Net Power	52 kW/70 hp	60 kW/80 hp	67 kW/90 hp
Operating Weight*			
XL	7750 kg	8260 kg	9320 kg
LGP	8190 kg	8600 kg	9670 kg

* Operating with dozer blade, cab, back-up alarm, operator, coolant, lubricants and full fuel tank.

Engine

	D3G	D4G	D5G
Engine Model	3046 T	3046 T	3046 T
Gross Power	57 kW/77 hp	65 kW/87 hp	74 kW/99 hp
Net Power			
ISO 9249	52 kW/70 hp	60 kW/80 hp	67 kW/90 hp
EEC 80/1269	52 kW/70 hp	60 kW/80 hp	67 kW/90 hp
Displacement	4996 cm ³	4996 cm ³	4996 cm ³
Bore	94 mm	94 mm	94 mm
Stroke	120 mm	120 mm	120 mm

- Ratings at 2200 rpm.
- Net power advertised is the power available at the flywheel when engine is equipped with fan, air cleaner, muffler and alternator.
- No derating required up to 2300 m altitude.

Steering and Braking

- Full powerturn
- Counterrotation
- Single lever steering, speed and direction control
- Hydrostatic (dynamic) braking through machine drive system using transmission control lever, center brake pedal or decel pedal.

Final Drive

- Double-reduction, with outboard planetary gear set.
- Mounted independently of track frames to isolate them from machine weight and ground-induced shock loads.

Transmission

Drive Pumps	2
Track motors	2
Relief valve settings	44 000 kPa
Maximum travel speed	
forward	9 km/h
reverse	9.6 km/h

- Dual-path, closed loop hydrostatic drive provides infinitely variable speeds from 0-9 km/h forward and 0-9.6 km/h reverse.
- Full-flow filtering of hydrostatic charge system oil.
- Drive pumps: two variable-displacement, slipper-axial piston pumps mounted tandem-style to engine flywheel housing.
- Track motors: two variable-displacement, link-type piston motors.

Hydraulic Controls

Pump Output	61.1 L/min
Relief valve setting	20 000 kPa

- Pump output ratings at 2200 rpm and 6895 kPa
- Control Positions:
 - Lift cylinders - raise, hold, lower, float.
 - Tilt cylinders - left, hold, right.
 - Angle cylinders - left, hold, right.
 - Ripper cylinders - raise, hold, lower.

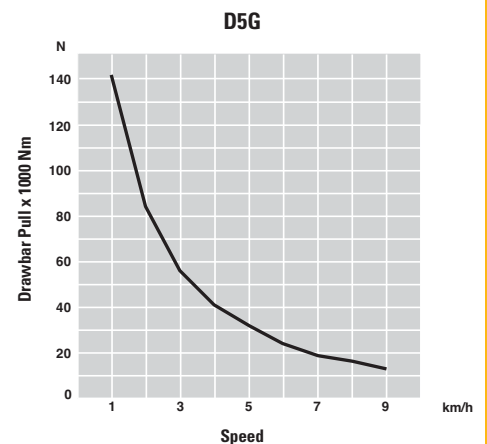
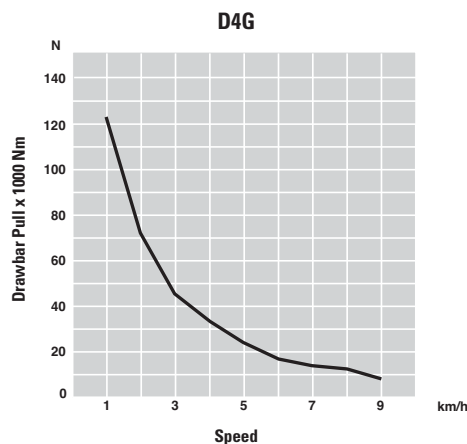
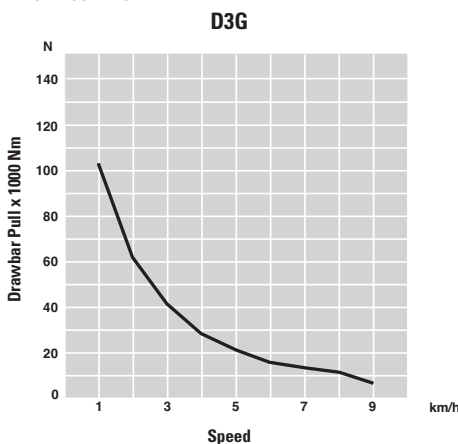
ROPS/FOPS

- ROPS (Rollover Protective Structure) offered by Caterpillar for the machine meets ROPS criteria ISO 3471-1994.
- FOPS (Falling Object Protective Structure) meets FOPS criteria ISO 3449-1992 Level II.

Sound

- The operator sound level measured according to the procedures specified in ISO 6396:1992 is 82 dB(A), for cab offered by Caterpillar, when properly installed and maintained and tested with the doors and windows closed.
- The labeled sound power level is 106 dB(A) for D3G and 107 dB(A) for D4G/D5G measured according to the test procedures and conditions specified in 2000/14/EC.

Drawbar Pull



Winch

Weight	610 kg
Winch Drive	Hydrostatic
Control	Pilot hydraulic
Speed	Variable
Winch length	705 mm
Overall width	741 mm
Drum diameter	254 mm
Drum width	274 mm
Throat clearance	171.5 mm
Rope diameter	
recommended	16 mm
optional	19 mm
Drum capacity	
recommended cable	113 m
optional cable	78 m
Maximum line pull	
bare drum	18 144 kg
full drum	11 340 kg
Maximum line speed	
bare drum	40 m/min
full drum	63 m/min

- Infinitely variable line speed and line pull from 0 to maximum.
- Power in/power out, brake off, freespool (standard equipment).
- Single lever, low effort pilot hydraulic control.
- Precise load control and speed modulation.
- Integral mounted drawbar.
- 3 roller fairlead available. Kit available to add a 4th roller.

Weights

Operating Weight	D3G	D4G	D5G
XL	7750 kg	8260 kg	9320 kg
LGP	8190 kg	8600 kg	9670 kg

Operating with dozer blade, cab, back-up alarm, operator, coolant, lubricants and full fuel tank.

Undercarriage

	D3G	D4G	D5G
Number of rollers (each side)	6	7	7
Number of shoes (each side)	39	41	39
Shoe width			
XL	406 mm	460 mm	510 mm
LGP	635 mm	635 mm	660 mm
Length of track on ground			
XL	2055 mm	2211 mm	2317 mm
LGP	2055 mm	2211 mm	2317 mm
Track gauge			
XL	1448 mm	1499 mm	1549 mm
LGP	1676 mm	1676 mm	1727 mm
Ground contact area			
XL	16 687 cm ²	20 341 cm ²	23 633 cm ²
LGP	26 099 cm ²	28 080 cm ²	30 584 cm ²
Ground pressure			
XL	43.2 kPa	38 kPa	37.1 kPa
LGP	29.3 kPa	28.6 kPa	29.7 kPa

- Sealed and lubricated track (S.A.L.T.).
- Hydraulic track adjusters.
- Box section track roller frames.
- Bolt-on rear track guiding guards.
- Serrated, two-piece split master link.
- Full length recoil guarding with sprocket guards and wipers.
- Single-grouser shoes.
- Segmented sprocket.
- Sealed and lubricated rollers and idlers.

Ripper

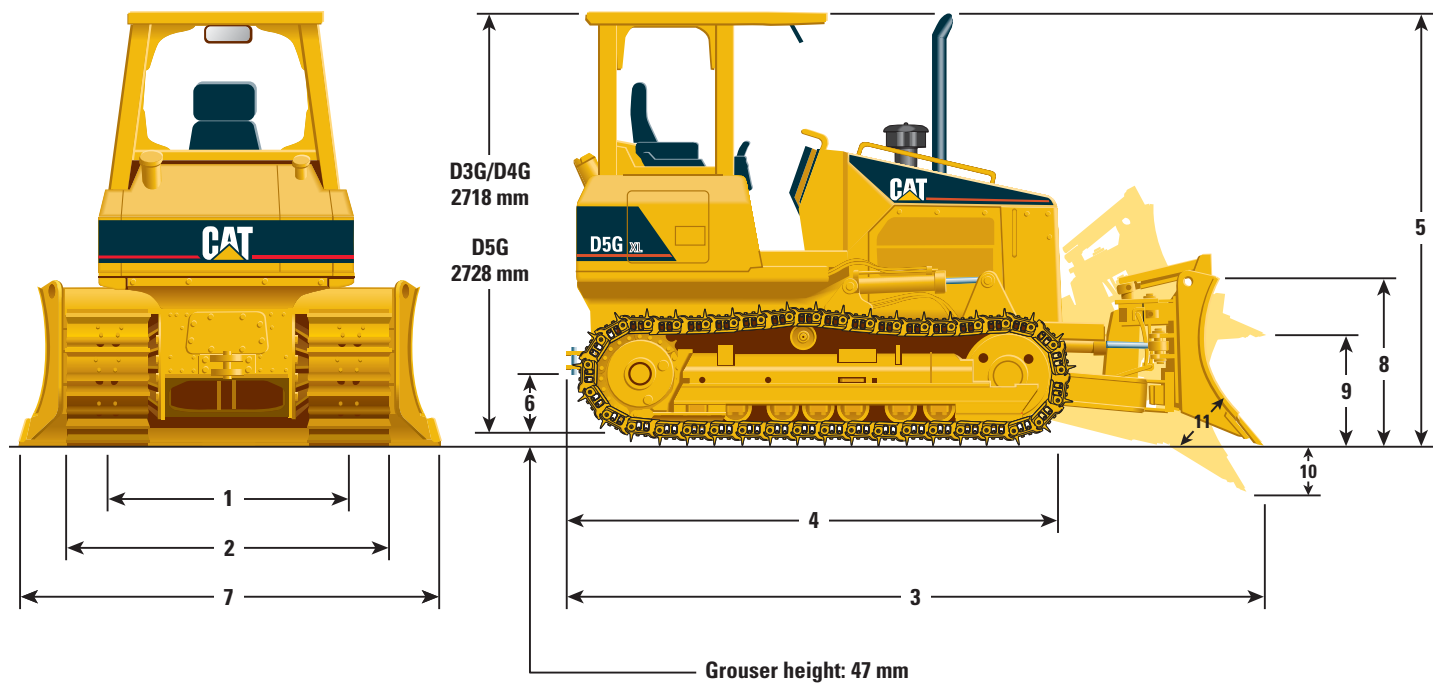
Type	Parallelogram
Number of Shanks	3
Maximum digging depth	337 mm
Maximum reach at ground line (D3G/D4G/D5G)	738/627/615 mm
Maximum ground clearance under tip	412 mm
Overall width	1710 mm
Height	165 mm
Weight	563 kg

Service Refill Capacities

	D3G	D4G	D5G
	Liters	Liters	Liters
Fuel tank	165	187	187
Crankcase and filter	13	13	13
Final drives			
XL (each side)	13.8	14.7	14.7
LGP (each side)	20.5	21.5	21.5
Cooling system	21	21	16.1
Transmission/hydraulic tank	46.5	46.5	46.5

Dimensions

All dimensions are approximate.



		XL			Intermediate			LGP		
		D3G	D4G	D5G	D3G	D4G	D5G	D3G	D4G	D5G
1 Track gauge	mm	1448	1499	1549	–	–	–	1676	1676	1727
2 Width of tractor (standard shoes, no blade)	mm	1854	1959	2059	–	–	–	2311	2311	2387
3 Overall length (with blade)	mm	4020	4035	4336	–	–	–	4017	4035	4252
4 Length of basic tractor (without blade)	mm	3103	3103	3184	–	–	–	3103	3103	3184
5 Tractor height	mm	2765	2765	2775	–	–	–	2765	2765	2775
6 Ground clearance	mm	374	374	384	–	–	–	374	374	384
Blade										
7 Blade width	mm	2461	2671	2690	2921	2921	2921	3146	3146	3254
8 Blade height	mm	936	1028	1101	843	922	1028	843	922	1028
9 Blade lift height	mm	688	686	760	695	733	789	695	733	789
10 Digging depth	mm	554	568	630	527	521	582	527	521	582
11 Blade cutting edge angle, adjustable		50-55°	50-55°	50-55°	50-55°	50-55°	50-55°	50-55°	50-55°	50-55°
Maximum tilt	mm	369	387	390	423	423	423	456	456	471
Maximum angle (either side)		25°	25°	25°	25°	25°	25°	25°	25°	25°
Blade width at maximum angle	mm	2247	2438	2456	2666	2666	2666	2871	2871	2970
Blade capacity (SAE)	m ³	1.44	1.92	2.19	1.42	1.69	2.09	1.53	1.84	2.34

Standard Equipment

Standard and optional equipment may vary. Consult your Caterpillar dealer for specifics.

Powertrain

Air-to-oil transmission cooler and side by side radiator
Air cleaner, radial dry-type with turbine precleaner
Blower fan
CAT 3046 T 6-cylinder diesel engine with 12-volt direct electric key start/stop
Fuel priming pump
Fuel/water separator with integral filter
Hydrostatic transmission, dual path, closed loop
Muffler

Electrical

Air inlet heater
Alternator, 110 amp
Back-up alarm
Batteries, heavy duty, 12-volt, maintenance free, two 900 cca
Horn
12-volt powerport

Hydraulics

3 valve
Hydraulic pump and oil
Single lever-three function control

Antifreeze

Extended Life Coolant -37°C

Undercarriage

Roller track frame
D3G: 6
D4G and D5G: 7
Track gauge
D3G:
XL 57" (1448 mm)
LGP 66" (1676 mm)
D4G:
XL 59" (1499 mm)
LGP 66" (1676 mm)
D5G:
XL 61" (1549 mm)
LGP 69" (1753 mm)
Sealed and lubricated tracks
D3G and D5G: 39-section
D4G: 41-section
Single grouser shoes
D3G:
XL 16" (406 mm)
LGP 25" (635 mm)
D4G:
XL 18" (460 mm)
LGP 25" (635 mm)
D5G:
XL 20" (510 mm)
LGP 26" (660 mm)
Front/rear guiding guards
Full length recoil guards with sprocket wiper plates
Hydraulic track adjusters
Segmented sprockets
Split master link

Operator Environment

ROPS, Canopy
Headliner
Dash mounted lighted gauge package includes:
Fuel level
Coolant temperature
Engine oil pressure
Transmission oil temperature
Maximum speed setting gauge
Indicator lights:
Low engine oil pressure
Parking brake
Hydraulics filter bypass
Low alternator charging
Electronic control fault
Water in fuel
Air inlet restriction
Air intake heater
Service hour meter
Comfort adjustable vinyl suspension seat
Seat, comfort, suspension, vinyl
Seat belt (76 mm)
Adjustable arm rests
Joystick control lever:
Speed
Direction
Steering
Counterrotation
Adjustable foot rests
Decelerator
12-volt powerport

Other Standard Equipment

C-Frame, VPAT, hydraulic cylinders and lines
Heavy duty crankcase guard
Engine enclosures
Heavy-duty hood, radiator guard and grill
Retrieval hitch (rear)
Front pull device
Vandalism protections
Instructions, English
Electronic technician connector
Product Link - Installation ready

Optional Equipment

(with approximate change in operating weight)

	kg		kg
AccuGrade installation arrangement	31	Lights	
Blade, variable pitch, power angling and tilt		ROPS, canopy, two front, one rear	4
D3G		ROPS, cab, two front, one rear	7
XL, 1.43 m ³ , 97" (2456 mm) width	503	Machine Security System	3
Intermediate, 1.41 m ³ , 115" (2921 mm) width	527	Product Link	8
LGP, 1.53 m ³ , 124" (3146 mm) width	560	Radiator grid, sandblast	12
D4G		Ripper, parallelogram, includes three shanks and teeth	563
XL, 1.91 m ³ , 105" (2671 mm) width	587	Screens:	
Intermediate, 1.68 m ³ , 115" (2921 mm) width	606	Front and door, for use with ROPS canopy	91
LGP, 1.83 m ³ , 124" (3146 mm) width	647	Rear, for use with ROPS canopy	23
1.43 m ³ , 97" (2456 mm) width	503	Rear, for use with ROPS cab	24
D5G		Side, for use with ROPS canopy	41
XL, 2.19 m ³ , 106" (2690 mm) width	683	Side, for use with ROPS cab	46
Intermediate, 2.09 m ³ , 115" (2921 mm) width	627	Sound suppression, exterior	
LGP, 2.34 m ³ , 128" (3254 mm) width	686	D3G	43
1.43 m ³ , 97" (2456 mm) width	503	D4G	40
Forestry, 2.19 m ³ , 106" (2690 mm) width	1001	D5G	16
Cab, ROPS, includes air conditioner, comfort seat (cloth), 110 amp alternator	403	Starting aid, ether	4
Cab, ROPS, logging, includes screens and polycarbonate door windows, air conditioner, comfort seat (cloth), 110 amp alternator	606	Sweeps, logging	133
Counterweight, front	289	Tracks:	
Counterweights, idler mounted		D3G	
D3G and D4G	136	14" (356 mm) triple grouser, sealed and lubricated track	-34
Drawbar, towing	13	25" (635 mm) self cleaning, sealed and lubricated track	175
Drive, auxiliary	11	D4G	
Guards		25" (635 mm) self cleaning, sealed and lubricated track	181
Rock, idler		D5G	
D3G and D4G (with counterweight)	21	18" (460 mm) single grouser, sealed and lubricated track	-84
D3G and D4G (without counterweight)	15	18" (460 mm) single grouser, rotating bushing track	9
D5G	31	20" (510 mm) single grouser, rotating bushing track	42
Track Roller		26" (660 mm) single grouser, rotating bushing track	42
D3G	69	Winch	
D4G	78	Installation, includes pump, lines, filter and control lever	69
D5G	99	Winch, variable speed	610
Heater		Fairlead (3-roller) for winch	120
Engine coolant	0.45	4th roller kit for fairlead	17
ROPS canopy	33		
Heavy duty grill	16		
Hydraulic arrangement			
4-valve, 1-lever dozer control, ripper	12		
4-valve, 1-lever dozer control, winch	12		