

# D11R CD

Carrydozer  
Track-Type Tractor



#### Cat® 3508B Diesel Engine

Gross Power	698 kW	935 hp
Flywheel Power	634 kW	850 hp
Blade Capacity to	43.6 m <sup>3</sup>	57.0 yd <sup>3</sup>

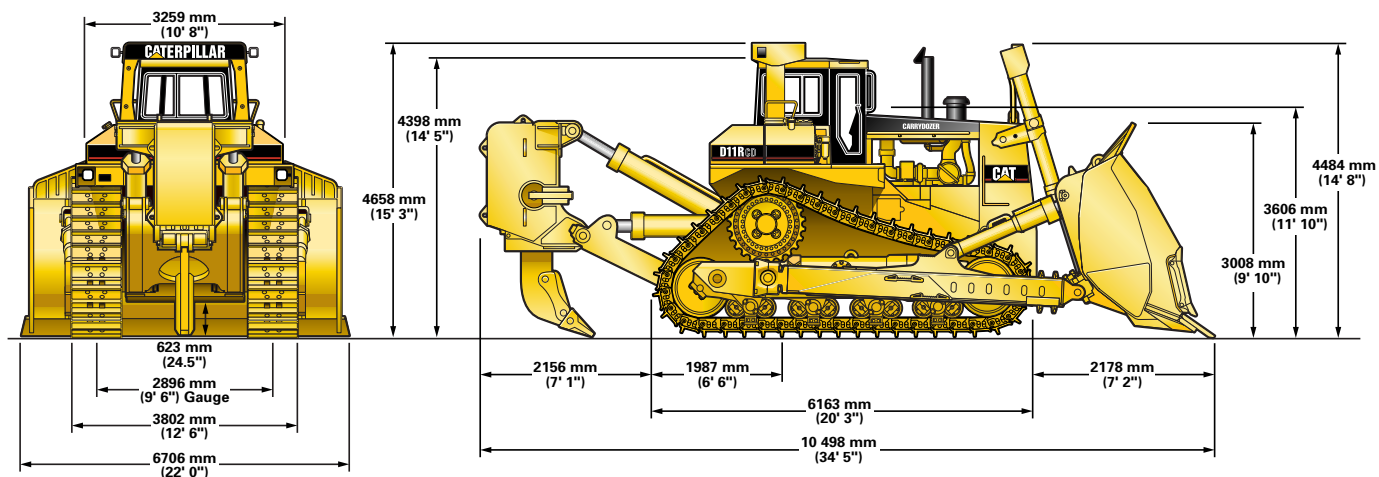
Featured machine may include additional equipment applicable only for special applications. See your Caterpillar Dealer for available options.

## Dimensions

All dimensions are approximate.

With attachments add to overall machine length:

Single-Shank ripper	2156 mm	7' 0.7"
Multi-Shank ripper	1935 mm	6' 4"
11 Carrydozer	2178 mm	7' 1.5"
Width over trunnions	4365 mm	14' 4"



**Note:** model shown equipped with 910 mm (36") shoes.

## Bulldozer

Tag-link dozer coupling brings blade closer for better balance and control.

### 11 Carrydozer Blade

Blade capacity	43.6 m <sup>3</sup>	57.0 yd <sup>3</sup>
Width with blade (over end bits)	6706 mm	22'
Blade height w/cutting edge at 53°	2740 mm	9' 0"
Blade height w/cutting edge at 53° and rock guard	3255 mm	10' 8"
Digging depth		
Rack back	688 mm	27.1"
Full dump	1708 mm	67.2"
Ground clearance		
Rack back	1846 mm	6' 1"
Full dump	307 mm	12.1"
Maximum tilt	1800 mm	5' 11"
Weight*	23 600 kg	51,920 lb
Total operating weight**	113,000 kg	248,600 lb

\* Does not include hydraulic controls but includes blade cylinders.

\*\* Includes blade and single-shank ripper, hydraulic controls, blade cylinders, coolant, lubricants, full fuel tank, 910 mm (36 in) shoes, ROPS/FOPS cab and operator.

### Features

- dual-tilt/dump cylinders are standard for improved blade loading, carrying and dumping
- cutting edges and end bits are DH-2 steel for maximum durability
- dozer lift cylinders mount to top corners of radiator guard to improve mechanical advantage
- single lever controls all blade functions
- aggressive heel clearance for improved blade penetration
- rock guard
- wear plates
- router protectors

# Ripper

Redesigned ripper frame for improved visibility to ripper tip. Hydraulic tip adjustment cylinders vary shank angle to aid penetration and help lift and shatter rock.

		Single-shank	+Multi-shank Arrangement
Overall beam width	mm ft/in	— —	3330 10' 11"
Maximum penetration force* (shank vertical)	kN lb	326 73,350	306 68,850
Maximum penetration (standard tip)	mm ft/in	1612 5' 3"	1070 3' 6"
Pryout force (multi-shank ripper with one tooth)	kN lb	642 144,450	650 146,250
Maximum clearance raised (under tip, pinned in bottom hole)	mm in	1115 43.9"	1137 44.8"
Number of shank holes		4	2
Weight (without hydraulic controls)	kg lb	12 733 28,076	12 025 26,515
Total operating weight** (with 11 CD blade and ripper)	kg lb	113 000 248,600	112 521 247,039

\* Specifications are converted from British to metric measure and rounded.

\*\* Operating weight includes lubricant, coolant, full fuel tank, hydraulic controls, 910 mm (36 in) extreme service shoe, ROPS/FOPS cab, and operator.

## Features

- optional single-shank pin puller lets operator adjust shank depth from seat
- large one-piece shank

# Standard Equipment

Standard and optional equipment may vary. Consult your Caterpillar Dealer for specifics.

## Electrical

Alarm, back-up  
Alternator, 100-amp  
Batteries, 12-volt (4), 190 amp-hour  
Converter, 12-volt, 5 amp  
Deutsch electrical connectors  
Diagnostic connector (3)  
Horn, forward warning  
Lighting system, Halogen  
(2 forward, 2 rear)  
Receptacle, starting

## Operator Environment

Armrests, adjustable  
Attachment control lever lockout switch  
Cat VIDS with fuel gauge, temperature gauges, tachometer, odometer, hour meter and diagnostic code readout  
Decelerator and governor switch  
Electronic controls  
Finger Tip Control (FTC) steering  
Heater  
Radio-ready cab  
Rearview mirror  
ROPS/FOPS sound suppressed cab with rollbar

Seat, adjustable contour suspension  
Seat belt, retractable

## Power Train

3508B Diesel Engine:  
24-volt electric start  
Air cleaner with precleaner (2)  
Electronic Unit Injection (EUI)  
Ether starting aid, automatic  
Fuel priming pump  
Muffler with rain cap (2)  
Turbocharged/aftercooled  
Advanced Modular Cooling System (AMOCs)  
Blower fan with hydraulic demand drive  
Clutch and brake system, electronic  
Controlled throttle shifting  
Drains, ecology fluid  
Electronic transmission control module  
Parking brake, electronic  
Planetary final drives, 4-planet, double-reduction  
Power shift transmission (3 speed)  
Precleaner with dust ejector  
Torque divider

## Undercarriage

Grousers, 910 mm (36"), extreme service, with sealed and lubricated PPR track (41 section)  
Hydraulic track adjusters  
Suspension-type undercarriage, 8-roller tubular track roller frame  
Track guides

## Other Standard Equipment

Dual-tilt blade control  
Guards:  
Bottom, extreme service, hinged, with front towing device  
Hinged radiator  
Hinged power train  
Pilot-operated, two-valve hydraulic system for bulldozer control  
Vandalism protection (8 caplocks)

## Optional Equipment

(with approximate change in operating weight)

	kg	lb		kg	lb
Air conditioner (R134a)	50	110	Hydraulic controls for ripper (two additional valves)	108	238
Antifreeze -50°C (-58°F)	—	—	Lights, supplemental		
Bulldozer:			2 front	9	20
11 Carrydozer			2 rear	11	24
Basic	—	—	Lines, cylinder	—	—
Complete	—	—	Mounting, cylinder	324	745
Converter, Aux. 24-volt to 12-volt	2.7	6	Oil change system for quick service to engine	1.8	4
Counterweight:			Paint, black, hood and cylinders	—	—
*Rear mounted (basic)	13 436	29,620	Pin puller:		
*Rear mounted (additional weight for two)	2145	4700	Single-shank ripper	100	220
Engine enclosure	97	214	Hydraulic control	5	11
Fan, defroster	—	—	Prelubrication system, engine	8.2	18
Fast-fill fuel system for use with:			Ripper		
Counterweight	34	58	Multi-shank	12 969	28,592
Ripper	34	58	Single-shank	13 584	29,885
Guards:			Roller, carrier	327	720
Final drive seal	—	—	Rollers, single-flange	—	—
Heater:			Seat, air suspension	—	—
Engine coolant (120-volt or 240-volt)	1.4	3	Seat, vinyl	—	—
Fuel	7.7	17	Steps, heavy-duty, and handles	102	255
			Sound suppression, spectator	2.3	5

\*A rear attachment and/or counterweight is required.