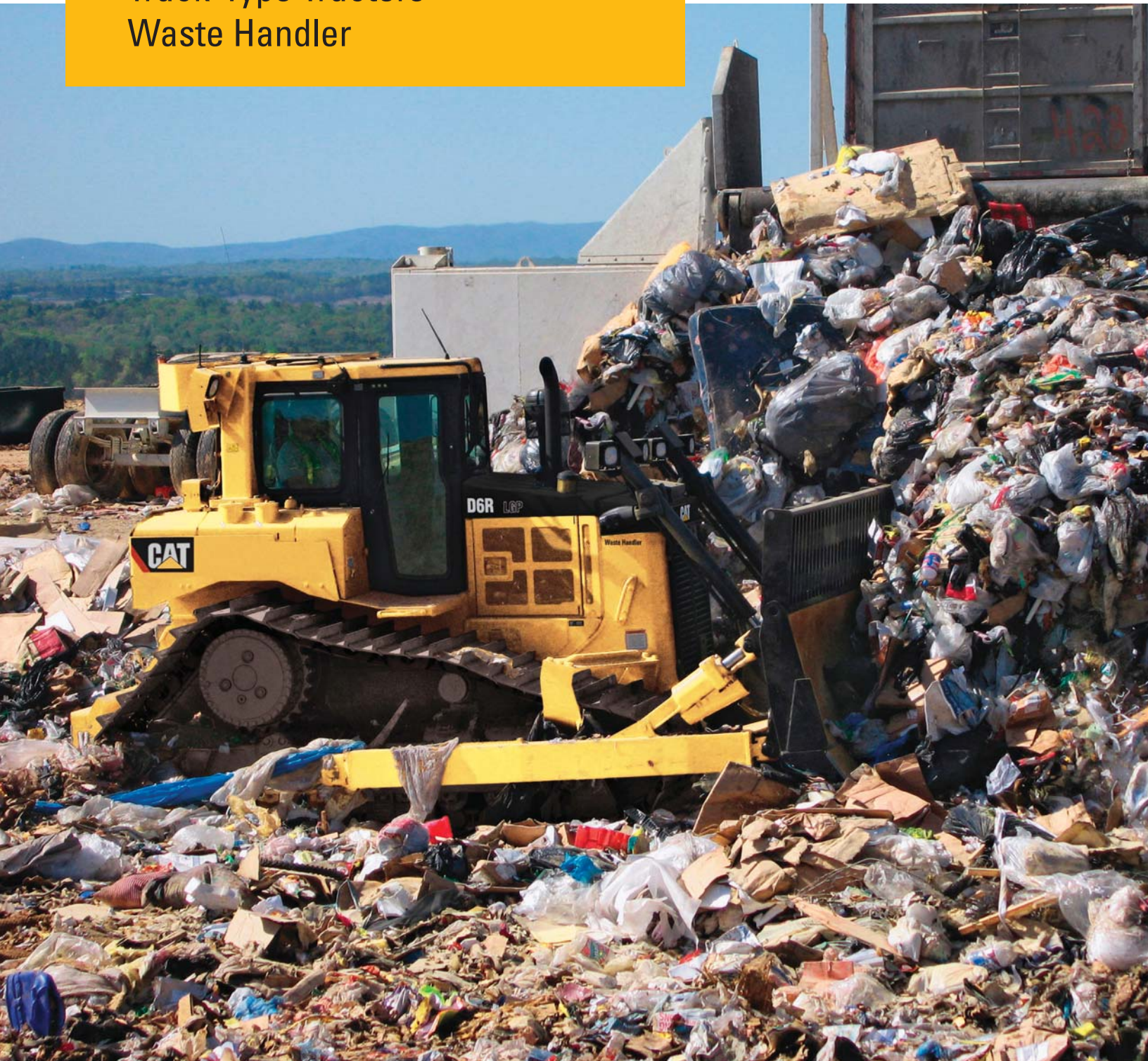


# D6R, D7R, D8R

Track-Type Tractors  
Waste Handler



Engine	Engine Model	Net Power – ISO 9249		Weights	Operating Weight	
D6R	Cat® C9 ACERT™	145 kW	195 hp	D6R XL	22 520 kg	49,648 lb
D7R	Cat C9 ACERT	179 kW	240 hp	D6R LGP	23 800 kg	52,470 lb
D8R	Cat 3406C DITA	228 kW	305 hp	D7R	27 610 kg	60,870 lb
				D7R LGP	29 570 kg	65,190 lb
				D8R	37 630 kg	82,880 lb
				D8R LGP	37 960 kg	83,687 lb

Note: Net Power is at rated engine speed.

## Engine – D6R XL

Engine Model	Cat® C9 ACERT™	
Flywheel Power <sup>(1)</sup>	145 kW	195 hp
No. of Cylinders	6 In-line	
Displacement	8.8 L	537 in <sup>3</sup>

## Operating Specifications – D6R XL

Operating Weight	22 520 kg	49,648 lb
Height – Top of ROPS	3195 mm	126 in
Width – Over Trunnions	2640 mm	104 in
Length – with Blade	5332 mm	210 in
Length – without Blade	3860 mm	152 in
Ground Clearance	383 mm	15 in

## Track – D6R XL

Width of Standard Track Shoe <sup>(2)</sup>	560 mm	22 in
Length of Track on Ground	2871 mm	113 in
Track Gauge	1880 mm	74 in

## Landfill Blades – D6R XL

Semi-Universal – Width	3260 mm	128.3 in
Semi-Universal – Capacities with Trash Rack	11.2 m <sup>3</sup>	14.3 yd <sup>3</sup>

<sup>(1)</sup> Flywheel power is at rated engine speed.

<sup>(2)</sup> Optional 610 mm (24 in) shoe with TRAP-hole available. Not compatible with Front Striker bar option.

## Engine – D6R LGP

Engine Model	Cat® C9 ACERT™	
Flywheel Power <sup>(1)</sup>	145 kW	195 hp
No. of Cylinders	6 In-line	
Displacement	8.8 L	537 in <sup>3</sup>

## Operating Specifications – D6R LGP

Operating Weight	23 800 kg	52,470 lb
Height – Top of ROPS	3245 mm	128 in
Width – Over Trunnions	3941 mm	155 in
Length – with Blade	5465 mm	215 in
Length – without Blade	4247 mm	167 in
Ground Clearance	433 mm	17 in

## Track – D6R LGP

Width of Standard Track Shoe	914 mm	36 in
Length of Track on Ground	3275 mm	129 in
Track Gauge	2290 mm	90.2 in

## Landfill Blades – D6R LGP

Straight – Width	4063 mm	160 in
Straight – Capacities with Trash Rack	9.3 m <sup>3</sup>	12.1 yd <sup>3</sup>

## Engine – D7R

Engine Model	Cat® C9 ACERT™	
Flywheel Power <sup>(1)</sup>	179 kW	240 hp
No. of Cylinders	6 In-line	
Displacement	8.8 L	537 in <sup>3</sup>

## Operating Specifications – D7R

Operating Weight	27 610 kg	60,870 lb
Height – Top of ROPS	3280 mm	129 in
Width – Over Trunnions	2876 mm	113 in
Length – with Blade	6037 mm	238 in
Length – without Blade	4736 mm	187 in
Ground Clearance	416 mm	16 in

## Track – D7R

Width of Standard Track Shoe	610 mm	24 in
Length of Track on Ground	2870 mm	113 in
Track Gauge	1980 mm	78 in

## Landfill Blades – D7R

Semi-Universal – Width	3690 mm	145.3 in
Semi-Universal – Capacities with Trash Rack	14.0 m <sup>3</sup>	18.4 yd <sup>3</sup>

# Specifications

## Engine – D7R LGP

Engine Model	Cat® C9 ACERT™	
Flywheel Power <sup>(1)</sup>	179 kW	240 hp
No. of Cylinders	6 In-line	
Displacement	8.8 L	537 in <sup>3</sup>

## Operating Specifications – D7R LGP

Operating Weight	29 570 kg	65,190 lb
Height – Top of ROPS	3360 mm	132.3 in
Width – Over Trunnions	3396 mm	134 in
Length – with Blade	5807 mm	229 in
Length – without Blade	4736 mm	187 in
Ground Clearance	496 mm	19.5 in

## Track – D7R LGP

Width of Standard Track Shoe	914 mm	36 in
Length of Track on Ground	3175 mm	125 in
Track Gauge	2235 mm	88 in

## Landfill Blades – D7R LGP

Straight – Width	4500 mm	177.2 in
Straight – Capacities with Trash Rack	12.3 m <sup>3</sup>	16.1 yd <sup>3</sup>

<sup>(1)</sup> Flywheel power is at rated engine speed.

## Engine – D8R

Engine Model	Cat® 3406C DI TA	
Flywheel Power <sup>(1)</sup>	228 kW	305 hp
No. of Cylinders	6 In-line	
Displacement	14.6 L	893 in <sup>3</sup>

## Operating Specifications – D8R

Operating Weight	37 630 kg	82,880 lb
Height – Top of ROPS <sup>(2)</sup>	3498 mm	138 in
Width – Over Trunnions	3050 mm	120 in
Length – with Blade	6438 mm	253.5 in
Length – without Blade	4554 mm	179.3 in
Ground Clearance	528 mm	20.8 in

## Track – D8R

Width of Standard Track Shoe	710 mm	28 in
Length of Track on Ground	3206 mm	126 in
Track Gauge	2082 mm	82 in

## Landfill Blades – D8R

Semi-Universal – Width	3937 mm	155 in
Semi-Universal – Capacities with Trash Rack	20.0 m <sup>3</sup>	26.1 yd <sup>3</sup>

<sup>(2)</sup> Includes ROPS mounted air conditioner installed.

## Engine – D8R LGP

Engine Model	Cat® 3406C DI TA	
Flywheel Power <sup>(1)</sup>	228 kW	305 hp
No. of Cylinders	6 In-line	
Displacement	14.6 L	893 in <sup>3</sup>

## Operating Specifications – D8R LGP

Operating Weight	37 960 kg	83,687 lb
Height – Top of ROPS <sup>(2)</sup>	3498 mm	138 in
Width – Over Trunnions	3396 mm	134 in
Length – with Blade	6281 mm	247.3 in
Length – without Blade	4554 mm	179.3 in
Ground Clearance	519 mm	20.4 in

## Track – D8R LGP

Width of Standard Track Shoe	710 mm	28 in
Length of Track on Ground	3206 mm	126 in
Track Gauge	2337 mm	92 in

## Landfill Blades – D8R LGP

Semi-Universal – Width	4400 mm	173.2 in
Semi-Universal – Capacities with Trash Rack	21.1 m <sup>3</sup>	27.6 yd <sup>3</sup>