

D7G XL

Series 2
Track-Type Tractor



Cat® 3306 DITA

Net Power (ISO 9249) at 2000 rpm

150 kW/204 hp

Operating Weight

20 580 kg

Operating weight includes: lubricants, coolant, 2-valve hydraulics, 560 mm shoes, 7S Bulldozer, Non-ROPS cab, full fuel tank, and 80 kg operator.

Engine

Cat 3306 DITA	
Maximum Flywheel Power	164 kW/223 hp
Net Power	
ISO 9249	150 kW/204 hp
80/1269/EEC	150 kW/204 hp
Bore	121 mm
Stroke	152 mm
Displacement	10.5 L

- All engine horsepower (hp) are metric including front page.
- Engine ratings at 2000 rpm.
- Net flywheel power is the power available at the flywheel when the engine is equipped with fan, air cleaner, water pump, lubrication oil pump, fuel pump and alternator.
- No altitude deration is required to 4100 m.

Transmission

Forward	km/h
1	3.9
2	6.4
3	9.9
Reverse	
1	4.5
2	7.8
3	12.7

Service Refill Capacities

	liter
Fuel Tank	415
Cooling System	45
Engine Crankcase	27
Final Drives (each)	34
Hydraulic Tank	102
Transmission, bevel gear and steering clutch compartments, torque converter	70

Weights

Operating Weight	20 580 kg
Shipping Weight	15 650 kg

- Operating weight includes: lubricants, coolant, 2-valve hydraulics, 560 mm shoes, 7S Bulldozer, Non-ROPS cab, full fuel tank, AC and 80 kg operator.
- Shipping weight includes: lubricants, coolant, 1-valve hydraulics, 560 mm shoes and 5% fuel.

Undercarriage

Shoe Type	Moderate service (single grouser)
Width of Shoe	560 mm
Optional	510 mm
Shoes/Side	38
Grouser Height	70 mm
Track on Ground	2720 mm
Ground Contact Area	3.05 m ²

Blades

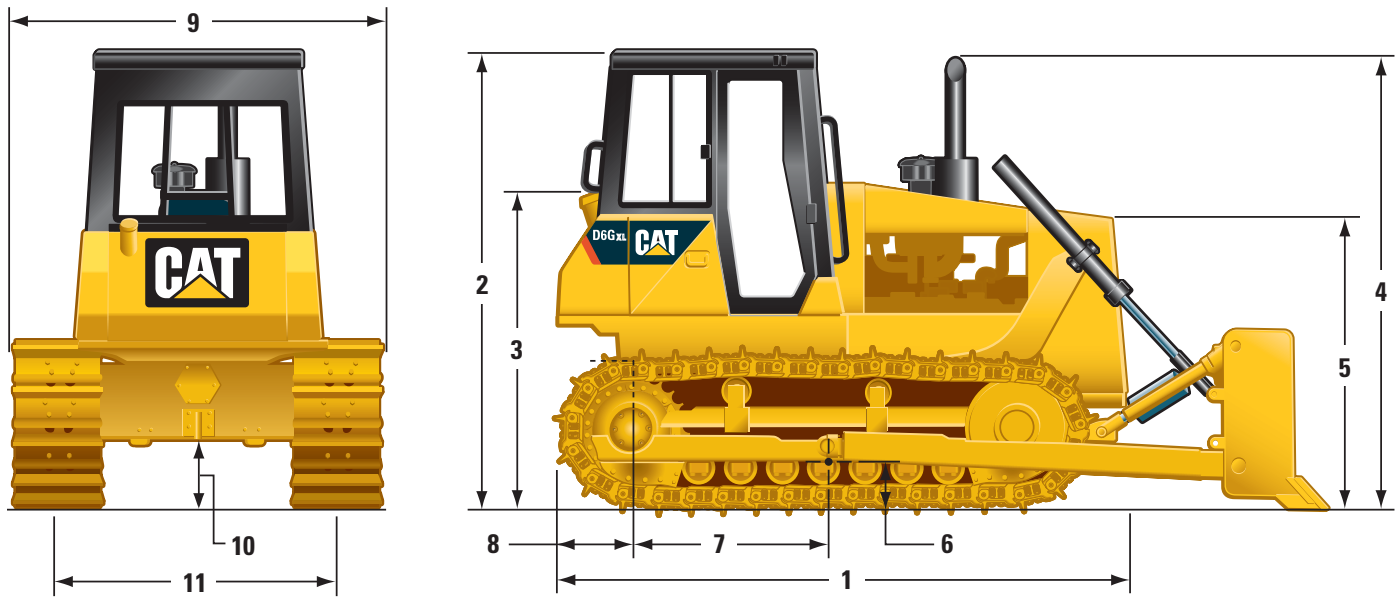
SU-Blade Capacity	5.75 m ³
S-Blade Capacity	4.2 m ³
A-Blade Capacity	2.9 m ³

Ripper

Type	Fixed Parallelogram
Number of Pockets	3
Overall Beam Width	2210 mm
Maximum Clearance Raised (under tip, pinned in bottom hole)	490 mm
Maximum Penetration	510 mm

Dimensions

All dimensions are approximate.



	mm
1 Overall length	4198
2 Height to top of non-ROPS cab	3294
3 Height to top of fuel tank	2334
4 Height to top of exhaust	2942
5 Height to top of radiator	2120
6 Height to bulldozer trunnion	481
7 Distance from rear of tractor to bulldozer trunnion	1124
8 Rear clearance from rear of tractor	575
9 Overall width with 560 mm standard shoes	2560
10 Ground clearance (SAE J894)	349
11 Track gauge	1981
To overall length (1), add the following dimension for respective attachments:	
Angle bulldozer	1300
Straight bulldozer with tilt	1090
SU bulldozer	1650
No. 7 ripper	973
PA57G winch	1270

Standard Equipment

Standard equipment may vary. Consult your Caterpillar dealer for details.

Electrical

35 amp alternator
Maintenance free battery – 2
Hour meter
Horn

Operator Environment

Decelerator
Gauges
 Fuel level
 Transmission/torque converter oil temperature
 Engine coolant temperature
 Ammeter (lamp)
 Engine oil pressure (lamp and audible)
Hand throttle
Suspension seat – vinyl
Seat belt
Brake pedal – single

Powertrain

Double Reduction Final Drives
Cat® 3306 DITA with 24-volt starter
Fuel priming pump – manual
Fuel/Water separator
Air cleaner with pre-cleaner
Blower fan
Muffler (curved tip)
Power-shift transmission (3F-3R)

Undercarriage

Track End Guiding Guards
6-Roller Track Frame
560 mm Single Grouser Sealed and Lubricated Track
Hydraulic Track Adjusters
Restrained Equalizer Bar
Segmented Sprocket

Other Standard Equipment

Crankcase Guard
Hinged Radiator Guard
415 Liter Fuel Tank
Front Pull Devise and retrieval hitch
Cap Locks (Fuel, Hydraulic, Fuel Drain Cover, Seat Support)

Optional Equipment

Optional equipment may vary. Consult your Caterpillar dealer for details.

Lighting Package

 Forward facing (2)
 Rear facing (2)
Alarm, backup
Heavy duty radiator guard, punched hole
Engine enclosure, normal duty
Engine enclosure, heavy duty
Guard
 Vandal, instrument panel (for canopy)
 Track guiding (center)
 Full length track roller frame
 Crank case, extreme service
 Fuel Tank
 Hydraulic Tank
 Hinged, heavy-duty radiator
Non-ROPS canopy

Non-ROPS cab

Pre-cleaner with pre-screener
610 mm single grouser sealed and lubricated track
Angle bulldozer blade
Straight bulldozer blade with tilt cylinder
Semi-universal bulldozer blade with tilt cylinder
Hydraulics
 One valve
 Two valve
 Three valve
Multi-shank ripper
Drawbar – rigid
Heater
Air Conditioning
Ether start
Start Motor, heavy duty