

# KOMATSU®

## D39EXi-23 D39PXi-23 Tier 4 Interim Engine

D  
3  
9  
i

### NET HORSEPOWER

105 HP @ 2200rpm  
78 kW @ 2200rpm

### OPERATING WEIGHT

D39EXi-23 9490 kg 20,922 lb  
D39PXi-23 9910 kg 21,848 lb

### BLADE CAPACITY

2.50–2.78 yd<sup>3</sup>  
1.91–2.13 m<sup>3</sup>



PHOTOS MAY INCLUDE OPTIONAL EQUIPMENT

**intelligent**™  
**MACHINE CONTROL**



## ENGINE

Model.....Komatsu SAA4D95LE-6\*  
 Type..... 4-cycle, water-cooled, direct injection  
 Aspiration..... Variable flow turbocharged, air-to-air aftercooled  
 Number of cylinders..... 4  
 Bore x stroke..... 95 mm x 115 mm **3.75" x 4.52"**  
 Piston displacement.....3.26 ltr **199 in³**  
 Governor.....All-speed, electronic  
 Horsepower  
     SAE J1995.....Gross 79 kW **107 HP**  
     ISO 9249 / SAE J1349.....Net 78 kW **105 HP**  
 Rated rpm..... 2200 rpm  
 Fan drive type.....Hydraulic  
 Lubrication system  
     Method..... Gear pump, forced lubrication  
     Filter..... Full-flow  
 \*EPA Tier 4 Interim and EU stage 3B emissions certified



## HYDROSTATIC TRANSMISSION

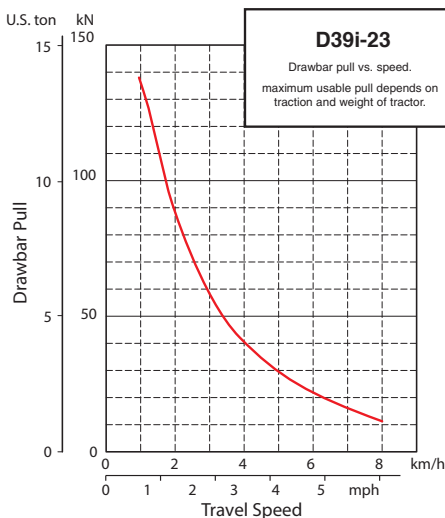
Dual-path, hydrostatic transmission provides infinite speed changes up to 5.3 km/h **8.5 mph**. The variable capacity travel motors allow the operator to select the optimum speed to match specific jobs. Travel control lock lever and neutral switch.

Travel speed (quick shift mode)*	Forward	Reverse
<b>1st</b>	0-3.4 km/h <b>0-2.1 mph</b>	0-4.1 km/h <b>0-2.5 mph</b>
<b>2nd</b>	0-5.6 km/h <b>0-3.5 mph</b>	0-6.5 km/h <b>0-4.0 mph</b>
<b>3rd</b>	0-8.5 km/h <b>0-5.3 mph</b>	0-8.5 km/h <b>0-5.3 mph</b>

Travel speed (variable mode)	Forward	Reverse
	0-8.5 km/h <b>0-5.3 mph</b>	0-8.5 km/h <b>0-5.3 mph</b>

\*Quick shift speeds are adjustable in the monitor.



## FINAL DRIVES

In-shoe mounted axial piston type travel motors with integrated two-stage planetary gear reduction. Compact in-shoe mount reduces risk of damaged by debris. Bolt-on sprocket ring.



## STEERING SYSTEM

Palm Command Control System (PCCS) joystick control for all directional movements. Pushing the joystick forward results in forward machine travel, while pulling it rearward reverses the machine. Simply tilt the joystick to the left or right to make a turn. Tilting the joystick fully to the left or right activates counter-rotation. Hydrostatic Transmission (HST) provides smooth powerful turns. Fully electronic control enables smooth control that can be adjusted in the monitor. The PCCS utilizes shift buttons to increase and decrease speed.

Minimum turning radius\*  
 D39EXi-23..... 2.2 m **87"**  
 D39PXi-23..... 2.4 m **94"**

\*As measured by track marks on the ground at pivot turn.



## UNDERCARRIAGE

Suspension..... Rigid type  
 Track roller frame.....Monocoque, large section, durable construction  
 Rollers and idlers.....Lubricated track rollers  
 Sealed and lubricated track  
     Track tension is easily adjusted with grease gun.

	D39EXi-23	D39PXi-23 Narrow	D39PXi-23 Wide
Number of track rollers (each side)	6	6	6
Type of shoes (standard)	Single grouser	Single grouser	Single grouser
Number of shoes (each side)	39	39	39
Grouser height	mm in 53 <b>2.1"</b>	53 <b>2.1"</b>	53 <b>2.1"</b>
Shoe width (standard)	mm in 510 <b>20"</b>	635 <b>25"</b>	700 <b>27.5"</b>
Ground contact area	cm²	24072	29970
	in²	<b>3,731</b>	<b>4,645</b>
Ground pressure (with dozer, ROPS cab)	kPa	38.9	32.6
	kgf/cm²	0.40	0.33
	psi	<b>5.64</b>	<b>4.73</b>
Track gauge	mm ft.in 1620 <b>5'4"</b>	1810 <b>5'11"</b>	1810 <b>5'11"</b>
Length of track on ground	mm ft.in 2360 <b>7'9"</b>	2360 <b>7'9"</b>	2360 <b>7'9"</b>



## SERVICE REFILL CAPACITIES

Coolant..... 34 ltr **9.0 U.S. gal**  
 Fuel tank..... 190 ltr **50.2 U.S. gal**  
 Engine oil..... 11 ltr **2.9 U.S. gal**  
 Hydraulic tank..... 60 ltr **15.8 U.S. gal**  
 Final drive (each side)..... 3.5 ltr **0.9 U.S. gal**



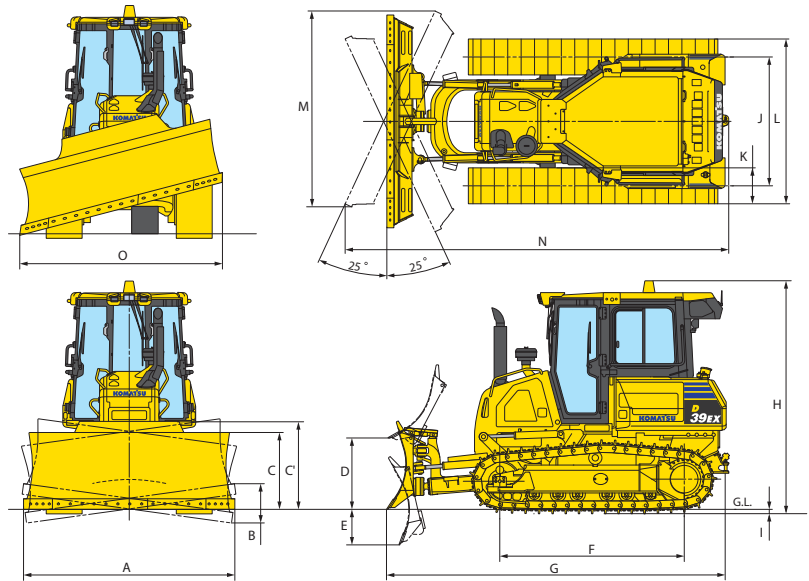
## OPERATING WEIGHT (APPROXIMATE)

Tractor weight:  
 Including ROPS cab, U frame for power angle tilt dozer, rated capacity of lubricant, coolant, full fuel tank, operator, and standard equipment.  
 D39EXi-23..... 8340 kg **18,387 lb**  
 D39PXi-23..... 8690 kg **19,158 lb**  
 Operating weight:  
 Including Power Angle Tilt dozer, ROPS cab, operator, standard equipment, rated capacity of lubricant, hydraulic control unit, coolant, and full fuel tank.  
 D39EXi-23.....9490 kg **20,922 lb**  
 D39PXi-23..... 9910 kg **21,848 lb**



## DIMENSIONS

	D39EXi-23		D39PXi-23*		D39PXi-23**	
A	2710 mm	<b>8'11"</b>	2980 mm	<b>9'9"</b>	3250 mm	<b>10'8"</b>
B	365 mm	<b>14"</b>	405 mm	<b>16"</b>	440 mm	<b>17"</b>
C	980 mm	<b>39"</b>	920 mm	<b>36"</b>	980 mm	<b>38.5"</b>
C'	1075 mm	<b>3'6"</b>	1047 mm	<b>3'5"</b>	1075 mm	<b>3'6"</b>
D	910 mm	<b>3'0"</b>	920 mm	<b>3'0"</b>	920 mm	<b>3'0"</b>
E	450 mm	<b>1'6"</b>	440 mm	<b>1'6"</b>	440 mm	<b>1'6"</b>
F	2360 mm	<b>7'9"</b>	2360 mm	<b>7'9"</b>	2360 mm	<b>7'9"</b>
G	4385 mm	<b>14'5"</b>	4385 mm	<b>14'5"</b>	4385 mm	<b>14'5"</b>
H	3015 mm	<b>9'11"</b>	3015 mm	<b>9'11"</b>	3015 mm	<b>9'11"</b>
I	53 mm	<b>2"</b>	53 mm	<b>2"</b>	53 mm	<b>2"</b>
J	1620 mm	<b>5'4"</b>	1810 mm	<b>5'11"</b>	1810 mm	<b>5'11"</b>
K	460 mm	<b>1'6"</b>	635 mm	<b>2'1"</b>	700 mm	<b>2'3"</b>
L	2080 mm	<b>6'10"</b>	2445 mm	<b>8'0"</b>	2490 mm	<b>8'2"</b>
M	2495 mm	<b>8'2"</b>	2980 mm	<b>9'9"</b>	2990 mm	<b>9'10"</b>
N	4910 mm	<b>16'1"</b>	4957 mm	<b>16'3"</b>	5020 mm	<b>16'6"</b>
O	2475 mm	<b>8'1"</b>	2870 mm	<b>9'5"</b>	2940 mm	<b>9'8"</b>



Ground clearance ..... 380 mm **15"**

\* Narrow blade, narrow shoe

\*\* Wide blade, wide shoe



## HYDRAULIC SYSTEM

Closed-center Load Sensing System (CLSS) designed for precise and responsive control, and for efficient simultaneous operation.

Hydraulic control unit:

All spool control valves externally mounted remote to the hydraulic tank. Piston-type hydraulic pump with capacity (discharge flow) of 99 ltr/min **26 U.S. gal/min** at rated engine rpm.

Relief valve setting ..... 27.4 MPa 280 kg/cm<sup>2</sup> **3,974 psi**

Hydraulic cylinders..... Double-acting, piston type

	Number of cylinders	Bore
Blade lift	2	75 mm <b>3.0"</b>
Blade tilt	1	90 mm <b>3.5"</b>
Blade angle	2	80 mm <b>3.1"</b>

Hydraulic oil capacity (refill):

Power angle tilt dozer ..... 60 ltr **15.9 U.S. gal**

Control valves:

3-spool control valve for Power Angle Tilt dozer

Positions:

Blade lift ..... Raise, hold, lower, and float

Blade tilt ..... Right, hold, and left

Blade angle ..... Right, hold, and left

Additional control valve required for ripper

Positions:

Ripper lift ..... Raise, hold, and lower



## DOZER EQUIPMENT

Blade capacities are based on the SAE recommended practice J1265.

Use of high tensile strength steel in moldboard for strengthened blade construction.

	Overall Length With Dozer*	Blade Capacity	Blade Width x Height	Max. Lift Above Ground	Max. Drop Below Ground	Max. Tilt Adjustment	Blade Angle
	mm ft.in	m <sup>3</sup> yd <sup>3</sup>	mm ft.in	mm ft.in	mm ft.in	mm ft.in	
<b>D39EXi-23</b>	4385	2.21	2710 x 980	910	440	365	25
Power Angle Tilt Dozer	<b>14'5"</b>	<b>2.89</b>	<b>8'11" x 3'3"</b>	<b>3'10"</b>	<b>1'6"</b>	<b>1'3"</b>	
<b>D39PXi-23</b>	4385	2.40	3250 x 910	910	440	440	25
Power Angle Tilt Dozer	<b>14'5"</b>	<b>3.14</b>	<b>10'8" x 3'0"</b>	<b>3'10"</b>	<b>1'6"</b>	<b>1'5"</b>	
<b>D39PXi-23 PAT</b>	4385	2.22	2980 x 910	910	440	405	25
Narrow Blade	<b>14'5"</b>	<b>2.90</b>	<b>9'9" x 3'0"</b>	<b>3'10"</b>	<b>1'6"</b>	<b>1'4"</b>	

\*Including hitch

**Note:** All comparisons and claims of improved performance made herein are made with respect to the prior Komatsu model unless otherwise specifically stated.

All trademarks and service marks used herein are the property of Komatsu Ltd., Komatsu America Corp., or their respective licensees.