

KOMATSU®

D85EX-15E0 D85PX-15E0

HORSEPOWER

Gross: 199 kW 266 HP @ 1900 rpm

Net: 197 kW 264 HP @ 1900 rpm

OPERATING WEIGHT

D85EX-15E0: 28100 kg 61,950 lb

D85PX-15E0: 27650 kg 60,960 lb

ecot3

D
85



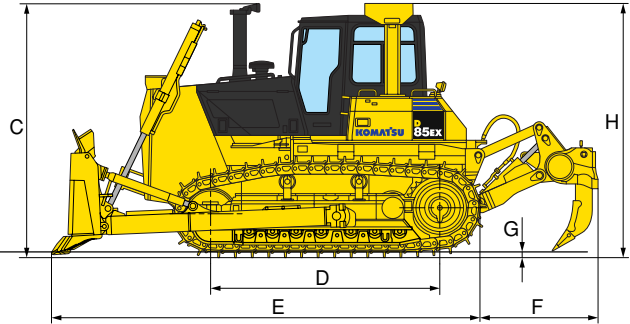
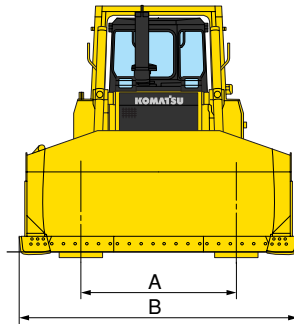
Photo may include optional equipment.

CRAWLER DOZER



DIMENSIONS

	D85EX-15E0	D85PX-15E0
A	2000 mm 6'7"	2250 mm 7'5"
B	3635 mm 11'11"	4365 mm 14'4"
C	3330 mm 10'11"	3330 mm 10'11"
D	3050 mm 10'	3480 mm 11'5"
E	5795 mm 19'	6015 mm 19'9"
F	1460 mm 4'9"	—
G	72 mm 2.8"	72 mm 2.8"
H	3324 mm 10'11"	3324 mm 10'11"



Ground Clearance: 450 mm 1'6"

Dimensions with semi-U dozer and multi-shank ripper (D85EX)



OPERATING WEIGHT

Tractor weight:

Including rated capacity of lubricant, coolant, full fuel tank, operator, and standard equipment.

D85EX-15E0	21220 kg	46,780 lb
D85PX-15E0	23500 kg	51,810 lb

Operating weight

Including Semi-U tilt dozer (EX) or straight tilt dozer (PX), multi-shank ripper (EX), steel cab, ROPS, operator, standard equipment, rated capacity of lubricant, coolant, and full fuel tank.

D85EX-15E0	28100 kg	61,950 lb
D85PX-15E0	27650 kg	60,960 lb



HYDRAULIC SYSTEM

Closed-center Load Sensing System (CLSS) designed for precise and responsive control, and for efficient simultaneous operation.

Hydraulic control units:

All spool valves externally mounted beside the hydraulic tank.

Plunger type hydraulic pump with capacity (discharge flow) of **195 ltr/min** 51.5 U.S. gal/min at rated engine rpm.

Relief valve setting **22.6 MPa** 230 kg/cm² 3,270 psi

Control valves:

Spool control valves for tilt dozer

Positions: Blade lift Raise, hold, lower, and float
Blade tilt. Right, hold, and left

Additional control valve required for multi-shank ripper (EX)

Positions: Ripper lift Raise, hold, and lower

Hydraulic cylinders Double-acting, piston

	Number of cylinders	Bore
Blade lift	2	100 mm 3.9"
Blade tilt	1	150 mm 5.9"
Ripper lift	2	130 mm 5.1"

Hydraulic oil capacity (refill):

Straight tilt dozer	67 ltr	17.7 U.S. gal
Semi-U tilt dozer	67 ltr	17.7 U.S. gal

Ripper equipment (additional volume):

Multi-shank ripper	11 ltr	2.9 U.S. gal
------------------------------	--------	--------------



DOZER EQUIPMENT

Blade capacities are based on the SAE recommended practice J1265.

	Overall length with dozer	Blade capacity	Blade length x height	Maximum lift above ground	Maximum drop below ground	Maximum tilt adjustment	Weight		Ground pressure*
							Dozer equipment	Hydraulic oil	
D85EX-15E0 Straight tilt dozer	5640 mm 18'6"	5.2 m ³ 6.8 yd ³	3715 mm x 1436 mm 12'2" x 4'9"	1210 mm 4'	540 mm 1'9"	750 mm 2'6"	3305 kg 7,290 lb	24 kg 53 lb	72.6 kPa 0.74 kg/cm ² 10.5 psi
D85EX-15E0 Semi-U tilt dozer	5795 mm 19'	7.0 m ³ 9.2 yd ³	3635 mm x 1580 mm 11'11" x 5'2"	1210 mm 4'	540 mm 1'9"	735 mm 2'5"	3575 kg 7,890 lb	24 kg 53 lb	73.6 kPa 0.75 kg/cm ² 10.7 psi
D85PX-15E0 Straight tilt dozer	6015 mm 19'9"	5.9 m ³ 7.7 yd ³	4365 mm x 1370 mm 14'4" x 4'6"	1230 mm 4'	570 mm 1'10"	500 mm 1'8"	3343 kg 7,370 lb	23 kg 51 lb	43.1 kPa 0.44 kg/cm ² 6.3 psi
D85EX-15E0 Mechanical angle power tilt dozer	6035 mm 19'10"	4.0 m ³ 5.2 yd ³	4515 mm x 1130 mm 14'10" x 3'8"	1173 mm 3'10"	760 mm 2'6"	520 mm 1'8"	3730 kg 8,220 lb	24 kg 53 lb	73.6 kPa 0.75 kg/cm ² 10.7 psi

* Ground pressure shows tractor, cab, ROPS canopy operator, standard equipment and applicable blade.