

KOMATSU®

D85EX-15E0 D85PX-15E0

HORSEPOWER

Gross: 199 kW 266 HP @ 1900 rpm

Net: 197 kW 264 HP @ 1900 rpm

OPERATING WEIGHT

D85EX-15E0: 28100 kg 61,950 lb

D85PX-15E0: 27650 kg 60,960 lb

ecot3

D
85



Photo may include optional equipment.

CRAWLER DOZER

SPECIFICATIONS



ENGINE

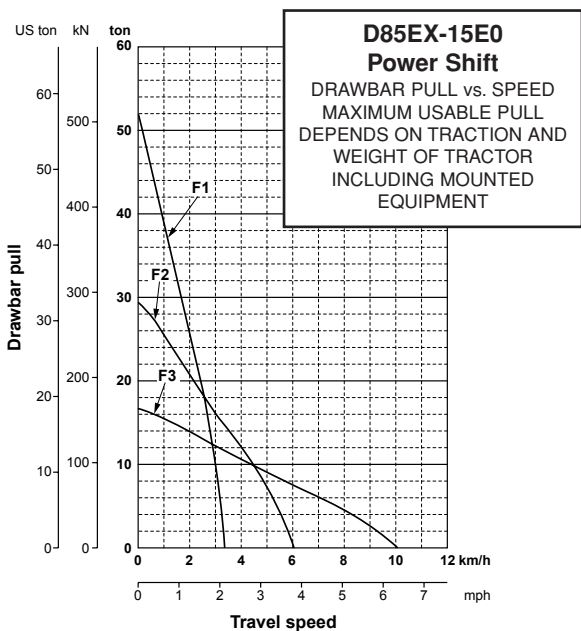
Model Komatsu SAA6D125E-5
 Type 4-cycle, water-cooled, direct injection
 Aspiration Turbocharged, air-to-air aftercooled, cooled EGR
 Number of cylinders 6
 Bore x stroke **125 mm x 150 mm** 4.92" x 5.91"
 Piston displacement **11.04 ltr** 674 in³
 Governor All-speed, electronic
 Horsepower
 SAE J1995 Gross **199kW** 266HP
 ISO 9249 / SAE J1349* Net **197kW** 264HP
 Rated rpm 1900rpm
 Fan drive type Hydraulic
 Lubrication system
 Method Gear pump, force lubrication
 Filter Full-flow
 *Net horsepower at the maximum speed of
 radiator cooling fan **179 kW** 240HP
 EPA Tier 3 and EU Stage 3A emissions certified.



TORQFLOW TRANSMISSION

Komatsu TORQFLOW transmission consists of a water-cooled, 3-element, 1-stage, 1-phase, torque converter and a planetary gear, multiple-disc clutch transmission which is hydraulically-actuated and force-lubricated for optimum heat dissipation. Gearshift lock lever and neutral safety switch prevent accidental starts.

Travel speed	Forward		Reverse	
	D85EX-15E0	D85PX-15E0	D85EX-15E0	D85PX-15E0
1st	3.3 km/h 2.1 mph	3.3 km/h 2.1 mph	4.4 km/h 2.7 mph	4.4 km/h 2.7 mph
2nd	6.1 km/h 3.8 mph	6.0 km/h 3.7 mph	8.0 km/h 5.0 mph	7.9 km/h 4.9 mph
3rd	10.1 km/h 6.3 mph	10.0 km/h 6.2 mph	13.0 km/h 8.1 mph	12.7 km/h 7.9 mph



FINAL DRIVES

Double-reduction final drive of spur and planetary gear sets to increase tractive effort and reduce gear tooth stresses for long final drive life. Segmented sprocket rims are bolt-on for easy replacement.



STEERING SYSTEM

PCCS lever controls for all directional movements. Pushing the PCCS lever forward results in forward machine travel, while pulling it rearward reverses the machine. Simply tilt the PCCS lever to left to make a left turn.
 Hydrostatic Steering System (HSS) is powered by steering planetary units and an independent hydraulic pump and motor. Counter-rotation turns are also available. Wet, multiple-disc, pedal-controlled service brakes are spring-actuated and hydraulically released. Gear shift lock lever also applies parking brake.
 Minimum turning radius D85EX-15E0 **1.99 m** 6'6"
 D85PX-15E0 **2.24 m** 7'4"



UNDERCARRIAGE

Suspension Oscillating equalizer bar and pivot shaft
 Track roller frame Monocoque, large section, durable construction
 Rollers and idlers Lubricated track rollers

Track shoes

Lubricated tracks. Unique seals prevent entry of foreign abrasive material into pin to bushing clearances to provide extended service life. Track tension is easily adjusted with grease gun.

	D85EX-15E0	D85PX-15E0
Number of track rollers (each side)	7	8
Type of shoes (standard)	Single grouser	Single grouser
Number of shoes (each side)	41	45
Grouser height	72 mm 2.8"	72 mm 2.8"
Shoe width (standard)	560 mm 22"	910 mm 36"
Ground contact area	34160 cm² 5295 in ²	63340 cm² 9,820 in ²
Ground pressure (with dozer, cab and ROPS)	73.6 kPa 0.75 kg/cm ² 10.7 psi	43.1 kPa 0.44 kg/cm ² 6.3 psi
Track gauge	2000 mm 6'7"	2250 mm 7'5"
Length of track on ground	3050 mm 10'	3480 mm 11'5"



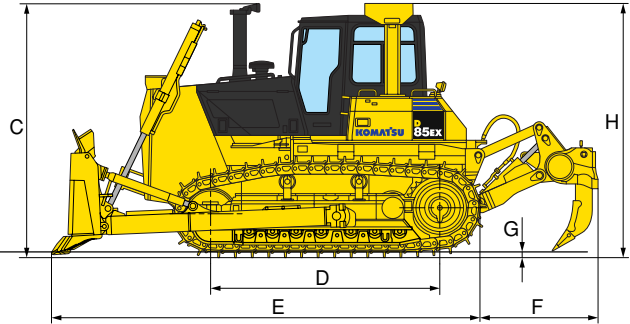
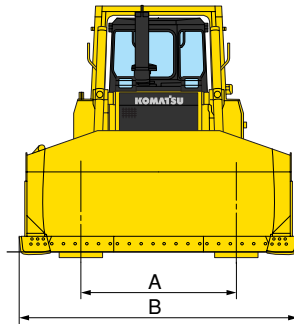
COOLANT AND LUBRICANT CAPACITY (REFILL)

Fuel tank **490 ltr** 129 U.S. gal
 Coolant **58 ltr** 15.3 U.S. gal
 Engine **38 ltr** 10.0 U.S. gal
 Torque converter, transmission, bevel gear, and steering system **60 ltr** 15.9 U.S. gal
 Final drive (each side) **26 ltr** 6.9 U.S. gal



DIMENSIONS

	D85EX-15E0	D85PX-15E0
A	2000 mm 6'7"	2250 mm 7'5"
B	3635 mm 11'11"	4365 mm 14'4"
C	3330 mm 10'11"	3330 mm 10'11"
D	3050 mm 10'	3480 mm 11'5"
E	5795 mm 19'	6015 mm 19'9"
F	1460 mm 4'9"	—
G	72 mm 2.8"	72 mm 2.8"
H	3324 mm 10'11"	3324 mm 10'11"



Ground Clearance: 450 mm 1'6"

Dimensions with semi-U dozer and multi-shank ripper (D85EX)



OPERATING WEIGHT

Tractor weight:

Including rated capacity of lubricant, coolant, full fuel tank, operator, and standard equipment.

D85EX-15E0	21220 kg	46,780 lb
D85PX-15E0	23500 kg	51,810 lb

Operating weight

Including Semi-U tilt dozer (EX) or straight tilt dozer (PX), multi-shank ripper (EX), steel cab, ROPS, operator, standard equipment, rated capacity of lubricant, coolant, and full fuel tank.

D85EX-15E0	28100 kg	61,950 lb
D85PX-15E0	27650 kg	60,960 lb



HYDRAULIC SYSTEM

Closed-center Load Sensing System (CLSS) designed for precise and responsive control, and for efficient simultaneous operation.

Hydraulic control units:

All spool valves externally mounted beside the hydraulic tank.

Plunger type hydraulic pump with capacity (discharge flow) of **195 ltr/min** 51.5 U.S. gal/min at rated engine rpm.

Relief valve setting **22.6 MPa** 230 kg/cm² 3,270 psi

Control valves:

Spool control valves for tilt dozer

Positions: Blade lift Raise, hold, lower, and float
Blade tilt. Right, hold, and left

Additional control valve required for multi-shank ripper (EX)

Positions: Ripper lift Raise, hold, and lower

Hydraulic cylinders Double-acting, piston

	Number of cylinders	Bore
Blade lift	2	100 mm 3.9"
Blade tilt	1	150 mm 5.9"
Ripper lift	2	130 mm 5.1"

Hydraulic oil capacity (refill):

Straight tilt dozer	67 ltr	17.7 U.S. gal
Semi-U tilt dozer	67 ltr	17.7 U.S. gal

Ripper equipment (additional volume):

Multi-shank ripper	11 ltr	2.9 U.S. gal
------------------------------	--------	--------------



DOZER EQUIPMENT

Blade capacities are based on the SAE recommended practice J1265.

	Overall length with dozer	Blade capacity	Blade length x height	Maximum lift above ground	Maximum drop below ground	Maximum tilt adjustment	Weight		Ground pressure*
							Dozer equipment	Hydraulic oil	
D85EX-15E0 Straight tilt dozer	5640 mm 18'6"	5.2 m ³ 6.8 yd ³	3715 mm x 1436 mm 12'2" x 4'9"	1210 mm 4'	540 mm 1'9"	750 mm 2'6"	3305 kg 7,290 lb	24 kg 53 lb	72.6 kPa 0.74 kg/cm ² 10.5 psi
D85EX-15E0 Semi-U tilt dozer	5795 mm 19'	7.0 m ³ 9.2 yd ³	3635 mm x 1580 mm 11'11" x 5'2"	1210 mm 4'	540 mm 1'9"	735 mm 2'5"	3575 kg 7,890 lb	24 kg 53 lb	73.6 kPa 0.75 kg/cm ² 10.7 psi
D85PX-15E0 Straight tilt dozer	6015 mm 19'9"	5.9 m ³ 7.7 yd ³	4365 mm x 1370 mm 14'4" x 4'6"	1230 mm 4'	570 mm 1'10"	500 mm 1'8"	3343 kg 7,370 lb	23 kg 51 lb	43.1 kPa 0.44 kg/cm ² 6.3 psi
D85EX-15E0 Mechanical angle power tilt dozer	6035 mm 19'10"	4.0 m ³ 5.2 yd ³	4515 mm x 1130 mm 14'10" x 3'8"	1173 mm 3'10"	760 mm 2'6"	520 mm 1'8"	3730 kg 8,220 lb	24 kg 53 lb	73.6 kPa 0.75 kg/cm ² 10.7 psi

* Ground pressure shows tractor, cab, ROPS canopy operator, standard equipment and applicable blade.



STANDARD EQUIPMENT

- Alternator 50 ampere/24V
- Back up alarm
- Batteries 140 Ah/2 x 12V
- Blower fan
- Decelerator pedal
- Dry-type air cleaner with dust evacuator and dust indicator
- Engine hood
- Final drive case wear guard
- Front pull hook
- Hinged front mask, perforated
- Hydraulic track adjusters
- Hydrostatic Steering System (HSS)
- Lighting system (including two front and rear lights)
- Muffler with rain cap
- Palm lever steering control
- Radiator reserve tank
- Rear cover
- Segmented sprockets
- Shoes:
 - 560 mm 22" single-grouser (EX)
 - 910mm 36" single-grouser (PX)
- Starting motors 7.5 kW/24 V
- Suspension seat and reclining
- TORQFLOW transmissions
- Track frames
- Track roller guards, full length (EX), center and end section (PX)
- Warning horn
- Water separator



OPTIONAL EQUIPMENT

- Air conditioner
- Alternator 75 ampere/24 V
- AM-FM radio with cassette
- Batteries 200 Ah/2 x 12V
- Engine side covers
- Fire extinguisher
- First-aid kit
- Heater and defroster
- Light for ripper point
- Luncheon box
- Mirror, rearview
- Panel cover
- Seat belt
- Shoes:
 - 610 mm 24" Single grouser shoe (EX)
 - 660 mm 26" Single grouser shoes (EX)
 - 910 mm 36" Swamp shoes (PX)
- Starting motor 11 kW/24V
- Sun visor
- Suspension seat, turn, fabric material
- Thermos
- Tool kit
- Vandalism protection kit

ROPS canopy (without cab):*

Weight. **437 kg** 970 lb
 Roof dimensions
 Length **1368 mm** 4'6"
 Width **1850 mm** 6'1"
 Height from
 compartment floor. **1768 mm** 5'10"

*Meets ISO 3471 and SAE J1040 APR88 ROPS standards, as well as ISO 3449 FOPS standard.

ROPS for cab:*

Weight. **371 kg** 820 lb
 Roof dimensions
 Length **650 mm** 2'2"
 Width **1774 mm** 5'10"
 Height from
 compartment floor. **1754 mm** 5'9"

*Meets ISO 3471 and SAE J1040 APR88 ROPS standards.

Steel cab:*

Weight. **410 kg** 910 lb
 Dimensions:
 Length **1758 mm** 5'9"
 Width **1323 mm** 4'4"
 Height from compartment
 floor to ceiling **1592 mm** 5'3"

*Meets ISO 3449 FOPS standard.

Multi-shank ripper (EX):

Hydraulically controlled parallelogram ripper with three shanks.

Weight (including hydraulic control unit) **2500 kg** 5,520 lb
 Beam length **2246 mm** 7'4"
 Maximum lift above ground . . . **564 mm** 1'10"
 Maximum digging depth **653 mm** 2'2"

