

SPECIFICATIONS



ENGINE

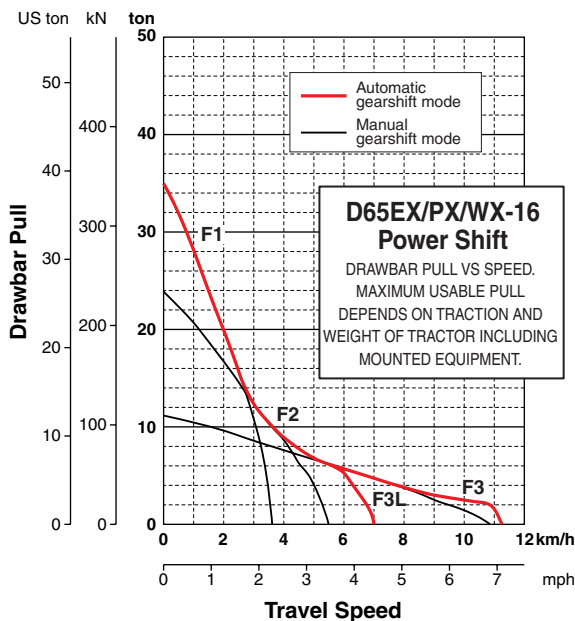
Model Komatsu SAA6D114E-3
 Type 4-cycle, water-cooled, direct injection
 Aspiration Turbocharged, air-to-air aftercooled
 Number of cylinders 6
 Bore x stroke **114 mm x 135 mm** 4.49" x 5.31"
 Piston displacement **8.27 ltr** 505 in³
 Governor All-speed and mid-range, electronic
 Horsepower
 SAE J1995 Gross **155 kW** 207 HP
 (ISO 14396 Maximum Gross **163.7 kW** 219 HP)
 ISO 9249 / SAE J1349* Net **153 kW** 205 HP
 Rated rpm 1950 rpm
 Fan drive type Hydraulic
 Lubrication system
 Method Gear pump, force lubrication
 Filter Full-flow
 *Net horsepower at the maximum speed of
 radiator cooling fan **139 kW** 186 HP
 EPA Tier 3 and EU Stage 3A emissions certified.



TORQFLOW TRANSMISSION

Komatsu TORQFLOW transmission consists of a water-cooled, 3-element, 1-stage, 2-phase, torque converter with lockup clutch, and a planetary gear, multiple-disc clutch transmission which is hydraulically actuated and force-lubricated for optimum heat dissipation. Gearshift lock lever and neutral safety switch prevent machine from accidental starts.

Travel speed	Forward	Reverse
1st	3.6 km/h 2.2 mph	4.4 km/h 2.7 mph
2nd	5.5 km/h 3.4 mph	6.6 km/h 4.1 mph
3rdL	7.2 km/h 4.5 mph	8.6 km/h 5.3 mph
3rd	11.2 km/h 7.0 mph	13.4 km/h 8.3 mph



STEERING SYSTEM

PCCS lever controls for all directional movements. Pushing the PCCS lever forward results in forward machine travel, while pulling it rearward reverses the machine. Simply tilt the PCCS lever to left to make a left turn. Tilt it to the right for a right turn.

Hydrostatic Steering System (HSS) is powered by steering planetary units and a hydraulic pump and motor. Counter-rotation turns are also available. Wet, multiple-disc, pedal-controlled service brakes are spring-actuated and hydraulically released. Gear shift lock lever also applies parking brake.

Minimum turning radius	D65EX-16 1.9 m 6'3"
	D65EX-16 with PAT 2.0 m 6'7"
	D65PX-16 2.2 m 7'3"
	D65WX-16 2.1 m 6'11"



UNDERCARRIAGE

Suspension Oscillating equalizer bar and pivot shaft
 Track roller frame Monocoque, large section, durable construction
 Rollers and idlers Lubricated track rollers

Track shoes

Lubricated tracks. Unique seals prevent entry of foreign abrasive material into pin to bushing clearances to provide extended service life. Track tension is easily adjusted with grease gun.

	D65EX-16	D65PX-16	D65WX-16
Type of dozer	SIGMADOZER	Straight Tilt Dozer	SIGMADOZER
Number of track rollers (each side)	7	8	7
Type of shoes (standard)	Single grouser	Single grouser	Single grouser
Number of shoes (each side)	42	45	42
Grouser height	mm in 65 2.6"	65 2.6"	65 2.6"
Shoe width (standard)	mm in 510 20"	915 36"	760 30"
Ground contact area	cm ² 30395 (30295) in ² 4,711 (4,696)	60115 (59935) 9,318 (9,290)	45295 (45145) 7,021 (6,997)
Ground pressure (tractor)	kPa 55.2 (56.4) kgf/cm ² 0.56 (0.58) psi 8.01 (8.18)	30.8 (31.4) 0.31 (0.32) 4.47 (4.56)	38.6 (39.4) 0.39 (0.40) 5.61 (5.73)
Track gauge	mm ft.in 1880 6'2"	2050 6'9"	2050 6'9"
Length of track on ground	mm ft.in 2980 (2970) 9'9" (9'9")	3285 (3275) 10'9" (10'9")	2980 (2970) 9'9" (9'9")

for PAT Dozer

	D65EX-16	D65PX-16	D65WX-16
Type of dozer	Power Angle Power Tilt Dozer	Power Angle Power Tilt Dozer	Power Angle Power Tilt Dozer
Number of track rollers (each side)	7	8	7
Type of shoes (standard)	Single grouser	Single grouser	Single grouser
Number of shoes (each side)	42	45	42
Grouser height	mm in 65 2.6"	65 2.6"	65 2.6"
Shoe width (standard)	mm in 560 22"	760 30"	760 30"
Ground contact area	cm ² 33375 (33265) in ² 5,173 (5,156)	49930 (49780) 7,739 (7,716)	45295 (45145) 7,021 (6,997)
Ground pressure (tractor)	kPa 52.9 (54.0) kgf/cm ² 0.54 (0.55) psi 7.68 (7.84)	37.0 (37.8) 0.38 (0.39) 5.38 (5.49)	40.9 (41.7) 0.42 (0.43) 5.94 (6.05)
Track gauge	mm ft.in 2050 6'9"	2230 7'4"	2230 7'4"
Length of track on ground	mm ft.in 2980 (2970) 9'9" (9'9")	3285 (3275) 10'9" (10'9")	2980 (2970) 9'9" (9'9")

() ... PLUS spec.



FINAL DRIVES

Double-reduction final drive of spur and planetary gear sets to increase tractive effort and reduce gear tooth stresses for long final drive life. Segmented sprocket teeth are bolt-on for easy replacement.



COOLANT AND LUBRICANT CAPACITY (REFILL)

Fuel tank	415 ltr	109.6 U.S. gal
Coolant	36 ltr	9.5 U.S. gal
Engine	28 ltr	7.4 U.S. gal
Torque converter, transmission, bevel gear, and steering system	48 ltr	12.7 U.S. gal
Final drive (each side)		
D65EX-16	24 ltr	6.3 U.S. gal
D65EX-16 with PAT	27 ltr	7.1 U.S. gal
D65PX-16	27 ltr	7.1 U.S. gal
D65WX-16	27 ltr	7.1 U.S. gal



HYDRAULIC SYSTEM

Closed-center load sensing system (CLSS) designed for precise and responsive control, and for efficient simultaneous operation.

Hydraulic control units:

All spool valves externally mounted beside the hydraulic tank.
Plunger type hydraulic pump with capacity (discharge flow) of **248 ltr/min** 65.5 U.S. gal/min at rated engine rpm.

Relief valve setting **27.9 MPa** 285 kg/cm² 4,050 psi

Control valves:

Spool control valves for SIGMADOZER or straight tilt dozer
Positions: Blade lift Raise, hold, lower, and float
Blade tilt Right, hold, and left

Spool control valves for power angle power tilt dozer

Positions: Blade lift Raise, hold, lower, and float
Blade tilt Right, hold, and left
Blade angle Right, hold, and left

Additional control valve required for multi-shank ripper (EX, WX)

Positions: Ripper lift Raise, hold, and lower

Hydraulic cylinders Double-acting, piston

	Number of cylinders	Bore	
		SIGMADOZER Straight Tilt Dozer	Power Angle Power Tilt Dozer
Blade lift	2	85 mm 3.3"	90 mm 3.5"
Blade tilt	1	125 mm 4.9"	130 mm 5.1"
Blade angle	2	—	110 mm 4.3"
Ripper lift	1	125 mm 4.9"	125 mm 4.9"

Hydraulic oil capacity (refill): **55 ltr** 14.5 U.S. gal

Ripper equipment (additional volume):

Multi-shank ripper **7 ltr** 1.8 U.S. gal



DOZER EQUIPMENT

Blade capacities are based on the SAE recommended practice J1265.

Use of high tensile strength steel in moldboard for strengthened blade construction.

	Overall Length With Dozer mm ft.in	Blade Capacity m ³ yd ³	Blade Width x Height mm ft.in	Max. Lift Above Ground mm ft.in	Max. Drop Below Ground mm ft.in	Max. Tilt Adjustment mm ft.in	Weight	Ground Pressure*
							Dozer equipment kg lb	
D65EX-16 SIGMADOZER	5490 18'0"	5.61 7.34	3410 x 1425 11'2" x 4'8"	1130 (1135) 3'8" (3'9")	505 (500) 1'8" (1'8")	870 2'10"	2390 5,270	62.9/0.64/9.13 (64.1/0.65/9.31)
D65EX-16 semi-U Tilt Dozer	5510 18'1"	5.61 7.34	3460 x 1425 11'4" x 4'8"	1110 (1115) 3'8" (3'8")	440 (435) 1'5" (1'5")	855 2'10"	2320 5,115	62.9/0.64/9.13 (64.1/0.65/9.31)
D65EX-16 Straight Tilt Dozer	5330 17'6"	3.89 5.09	3415 x 1225 11'2" x 4'0"	1100 (1105) 3'7" (3'8")	435 (430) 1'5" (1'5")	870 2'10"	2060 4,540	61.8/0.63/8.98 (63.0/0.64/9.15)
D65EX-16 Power Angle Power Tilt Dozer	5790 19'0"	4.25 5.56	3870 x 1235 12'8" x 4'1"	1165 (1170) 3'10" (3'10")	700 (695) 2'4" (2'3")	500 1'8"	2960 6,530	61.6/0.63/8.95 (62.8/0.64/9.11)
D65EX-16 Angle Dozer	5540 18'2"	3.55 4.64	3970 x 1100 13'0" x 3'7"	1175 (1180) 3'10" (3'10")	445 (440) 1'6" (1'5")	400 1'4"	2200 4,850	62.3/0.64/9.04 (63.5/0.65/9.22)
D65PX-16 Straight Tilt Dozer	5680 18'8"	3.69 4.83	3970 x 1100 13'0" x 3'7"	1125 (1130) 3'8" (3'8")	540 (535) 1'9" (1'9")	890 2'11"	2100 4,630	34.2/0.35/4.97 (34.8/0.36/5.06)
D65PX-16 Power Angle Power Tilt Dozer	5790 19'0"	4.42 5.78	4010 x 1235 13'2" x 4'1"	1165 (1170) 3'10" (3'10")	700 (695) 2'4" (2'3")	520 1'8"	2990 6,590	42.9/0.44/6.23 (43.7/0.45/6.34)
D65WX-16 SIGMADOZER	5500 18'1"	5.90 7.72	3580 x 1425 11'9" x 4'8"	1130 (1135) 3'8" (3'9")	505 (500) 1'8" (1'8")	770 2'6"	2500 5,510	44.1/0.45/6.39 (44.9/0.46/6.51)
D65WX-16 Power Angle Power Tilt Dozer	5790 19'0"	4.42 5.78	4010 x 1235 13'2" x 4'1"	1165 (1170) 3'10" (3'10")	700 (695) 2'4" (2'3")	520 1'8"	2990 6,590	47.4/0.48/6.87 (48.2/0.49/7.00)

*Ground pressure shows tractor, ROPS cab, operator, standard equipment and applicable blade.

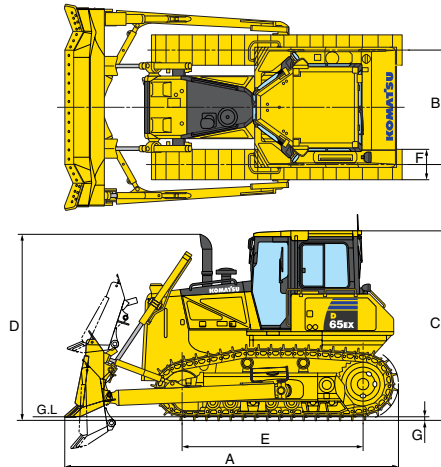
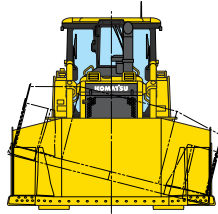
() ... PLUS spec.

DIMENSIONS

	D65EX-16 SIGMADOZER	D65PX-16 Straight Tilt Dozer	D65WX-16 SIGMADOZER
A	5490 mm 18'0"	5680 mm 18'8"	5500 mm 18'1"
B	1880 mm 6'2"	2050 mm 6'9"	2050 mm 6'9"
C	3155 mm 10'4" (3160 mm 10'4")	3155 mm 10'4" (3160 mm 10'4")	3155 mm 10'4" (3160 mm 10'4")
D	3080 mm 10'1" (3085 mm 10'1")	3080 mm 10'1" (3085 mm 10'1")	3080 mm 10'1" (3085 mm 10'1")
E	2980 mm 9'9" (2970 mm 9'9")	3285 mm 10'9" (3275 mm 10'9")	2980 mm 9'9" (2970 mm 9'9")
F	510 mm 20"	915 mm 36"	760 mm 30"
G	65 mm 2.6"	65 mm 2.6"	65 mm 2.6"

Ground clearance . . . **.410 mm 1'4" (415 mm 1'4")**

() ... PLUS spec.



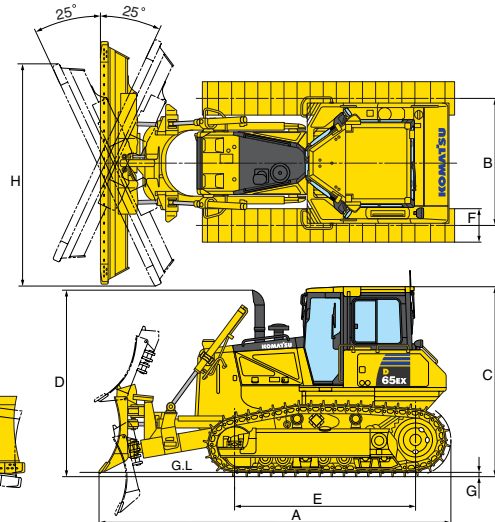
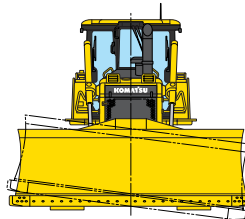
Dimension with SIGMADOZER (D65EX-16) single grouser shoe.

for PAT Dozer

	D65EX-16 PAT Dozer	D65PX-16 PAT Dozer	D65WX-16 PAT Dozer
A	5790 mm 19'0"	5790 mm 19'0"	5790 mm 19'0"
B	2050 mm 6'9"	2230 mm 7'4"	2230 mm 7'4"
C	3155 mm 10'4" (3160 mm 10'4")	3155 mm 10'4" (3160 mm 10'4")	3155 mm 10'4" (3160 mm 10'4")
D	3080 mm 10'1" (3085 mm 10'1")	3080 mm 10'1" (3085 mm 10'1")	3080 mm 10'1" (3085 mm 10'1")
E	2980 mm 9'9" (2970 mm 9'9")	3285 mm 10'9" (3275 mm 10'9")	2980 mm 9'9" (2970 mm 9'9")
F	560 mm 22"	760 mm 30"	760 mm 30"
G	65 mm 2.6"	65 mm 2.6"	65 mm 2.6"
H	3545 mm 11'8"	3670 mm 12'0"	3670 mm 12'0"

Ground clearance . . . **.410 mm 1'4" (415 mm 1'4")**

() ... PLUS spec.



Dimension with Power angle power tilt dozer (D65EX-16) single grouser shoe.

OPERATING WEIGHT

Tractor weight:

Including ROPS cab, rated capacity of lubricant, hydraulic control unit, coolant, full fuel tank, operator, and standard equipment.

D65EX-16	17120 kg 37,740 lb (17430 kg 38,430 lb)
D65PX-16	18890 kg 41,640 lb (19210 kg 42,350 lb)
D65WX-16	17860 kg 39,370 lb (18170 kg 40,060 lb)

for PAT dozer

D65EX-16	18030 kg 39,750 lb (18340 kg 40,430 lb)
D65PX-16	18870 kg 41,600 lb (19210 kg 42,350 lb)
D65WX-16	18900 kg 41,670 lb (19210 kg 42,350 lb)

() ... PLUS spec.

Operating weight

Including SIGMADOZER (EX/WX) or straight tilt dozer (PX) or power angle power tilt dozer, ROPS cab, operator, standard equipment, rated capacity of lubricant, hydraulic control unit, coolant, and full fuel tank.

D65EX-16	19510 kg 43,010 lb (19820 kg 43,690 lb)
D65PX-16	20990 kg 46,270 lb (21310 kg 46,980 lb)
D65WX-16	20360 kg 44,880 lb (20670 kg 45,570 lb)

for PAT dozer

D65EX-16	20990 kg 46,270 lb (21300 kg 46,960 lb)
D65PX-16	21860 kg 48,190 lb (22200 kg 48,940 lb)
D65WX-16	21890 kg 48,260 lb (22200 kg 48,940 lb)

() ... PLUS spec.