

# SPECIFICATIONS



## ENGINE

Model..... Komatsu SAA6D107E-3\*  
 Type..... 4-cycle, water-cooled, direct injection  
 Aspiration..... Komatsu Variable Geometry  
 Turbocharged, air-to-air aftercooled, cooled EGR  
 Number of cylinders..... 6  
 Bore x stroke..... 107 mm x 124 mm **4.21" x 4.88"**  
 Piston displacement..... 6.69 ltr **408 in<sup>3</sup>**  
 Governor..... All-speed and mid-range, electronic  
 Horsepower  
 SAE J1995..... Gross 127 kW **170 HP**  
 ISO 9249 / SAE J1349..... Net 125 kW **168 HP**  
 Rated rpm..... 2200 rpm  
 Fan drive type..... Hydraulic  
 Lubrication system  
 Method..... Gear pump, force lubrication  
 Filter..... Full-flow

\*EPA Tier 4 Final emissions certified

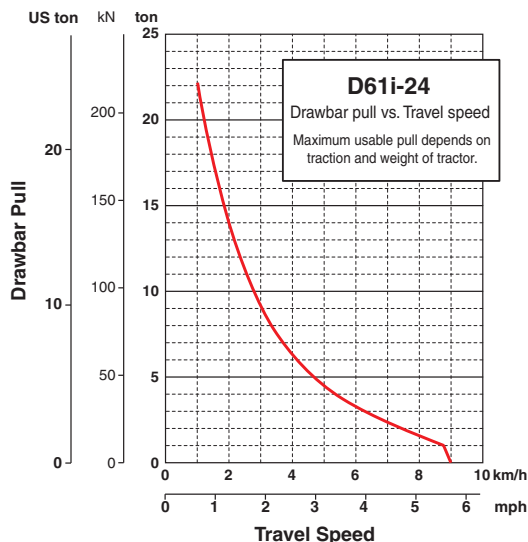


## HYDROSTATIC TRANSMISSION

Dual-path, hydrostatic transmission provides infinite speed changes up to 9.0 km/h **5.6 mph**. The variable capacity travel motors allow the operator to select the optimum speed to match specific jobs. Travel control lock lever and neutral switch.

Travel speed (quick shift mode)*	Forward	Reverse
1st	0-3.4 km/h <b>0-2.1 mph</b>	0-4.1 km/h <b>0-2.5 mph</b>
2nd	0-5.6 km/h <b>0-3.5 mph</b>	0-6.5 km/h <b>0-4.0 mph</b>
3rd	0-9.0 km/h <b>0-5.6 mph</b>	0-9.0 km/h <b>0-5.6 mph</b>
Travel speed (variable mode)	Forward	Reverse
	0-9.0 km/h <b>0-5.6 mph</b>	0-9.0 km/h <b>0-5.6 mph</b>

\*Quick shift speeds are adjustable in the monitor.



## FINAL DRIVES

In-shoe mounted axial piston type travel motors with integrated two-stage planetary gear reduction. Compact in-shoe mount reduces risk of damage by debris. Bolt-on sprocket for easy displacement.



## STEERING SYSTEM

PCCS joystick control for all directional movements. Pushing the joystick forward results in forward machine travel, while pulling it backward reverses the machine. Simply tilt the joystick to the left or right to make a turn. Tilting the joystick fully to the left or right activates counter-rotation. HST eliminates steering clutches and brakes, providing smooth, powerful turns. Fully electronic control enables smooth operation. The PCCS utilizes shift buttons to increase and decrease speed.

Minimum turning radius

D61EXi-24	2.1 m <b>83"</b>
D61PXi-24	2.3 m <b>91"</b>



## UNDERCARRIAGE

Suspension..... Oscillating-type with equalizer bar and pivot shafts  
 Track roller frame..... Monocoque, large section, durable construction  
 Rollers and idlers..... Lubricated track rollers

Lubricated tracks

Parallel Link Undercarriage System (PLUS) with lubricated rotating bushings for extended system wear life and lower maintenance costs. Track tension is adjusted easily with grease gun.

	D61EXi-24	D61PXi-24
Number of track rollers (each side)	8	8
Type of shoes (standard)	Single grouser	Single grouser
Number of shoes (each side)	46	46
Grouser height	mm <b>in</b> 57.5 <b>2.3"</b>	57.5 <b>2.3"</b>
Shoe width (standard)	mm <b>in</b> 600 <b>24"</b>	860 <b>34"</b>
Ground contact area	cm <sup>2</sup> 37980	54440
	<b>in<sup>2</sup> 5,887</b>	<b>8,438</b>
Ground pressure	kPa 47.8	35.0
(with dozer, ROPS cab)	kgf/cm <sup>2</sup> 0.49	0.36
	<b>psi 6.97</b>	<b>5.12</b>
Track gauge	mm <b>ft.in</b> 1900 <b>6'3"</b>	2130 <b>7'0"</b>
Length of track on ground	mm <b>ft.in</b> 3165 <b>10'5"</b>	3165 <b>10'5"</b>



## SERVICE REFILL CAPACITIES

Coolant	45 ltr	<b>11.9 U.S. gal</b>
Fuel tank	372 ltr	<b>98.3 U.S. gal</b>
Engine oil	27 ltr	<b>7.2 U.S. gal</b>
Hydraulic tank	101 ltr	<b>26.7 U.S. gal</b>
Final drive (each side)	8.1 ltr	<b>2.2 U.S. gal</b>
DEF tank	20.6 ltr	<b>5.4 U.S. gal</b>



## OPERATING WEIGHT (APPROXIMATE)

Tractor weight:

Including ROPS (ISO 3471) cab, C frame for PAT dozer, rated capacity of lubricant, coolant, full fuel tank, operator and standard equipment.

D61EXi-24	17650 kg <b>38,911 lb</b>
D61PXi-24	18440 kg <b>40,653 lb</b>

Operating weight:

Including PAT dozer, ROPS (ISO 3471) cab, operator, standard equipment, rated capacity of lubricant, coolant and full fuel tank.

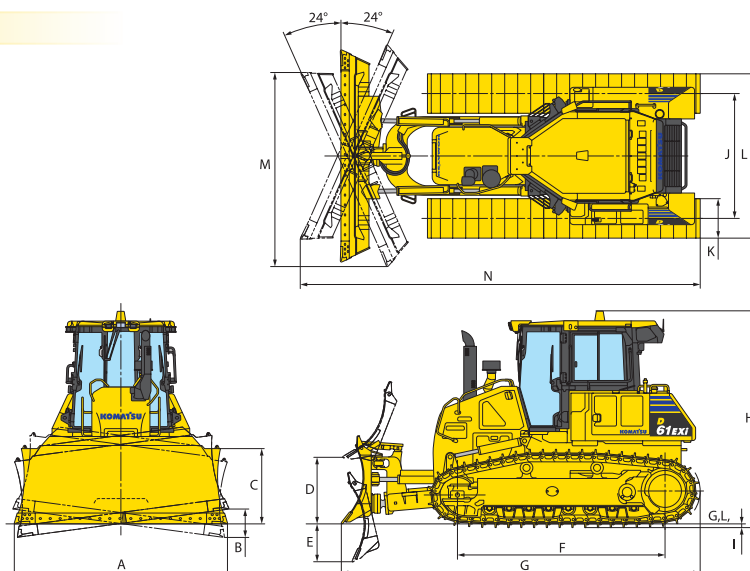
D61EXi-24	18640 kg <b>41,094 lb</b>
D61PXi-24	19580 kg <b>43,167 lb</b>



## DIMENSIONS

	D61EXi-24	D61PXi-24
A	3250 mm <b>10'8"</b>	3860 mm <b>12'8"</b>
B	435 mm <b>1'5"</b>	515 mm <b>1'8"</b>
C	1195 mm <b>3'11"</b>	1155 mm <b>3'9"</b>
D	1025 mm <b>3'4"</b>	1025 mm <b>3'4"</b>
E	580 mm <b>1'11"</b>	580 mm <b>1'11"</b>
F	3165 mm <b>10'5"</b>	3165 mm <b>10'5"</b>
G	5480 mm <b>17'12"</b>	5480 mm <b>17'12"</b>
H	3340 mm <b>11'</b>	3340 mm <b>11'</b>
I	57.5 mm <b>2"</b>	57.5 mm <b>2"</b>
J	1900 mm <b>6'3"</b>	2130 mm <b>7'0"</b>
K	610 mm <b>2'0"</b>	860 mm <b>2'10"</b>
L	2500 mm <b>8'2"</b>	2990 mm <b>9'10"</b>
M	2980 mm <b>9'9"</b>	3530 mm <b>11'7"</b>
N	6100 mm <b>20'0"</b>	6220 mm <b>20'5"</b>

Ground clearance ..... 390 mm **15"**



## HYDRAULIC SYSTEM

Closed-Center Load Sensing System (CLSS) designed for precise and responsive control, and for efficient simultaneous operation.

Hydraulic control unit:

All spool control valves externally mounted remote to the hydraulic tank. Piston-type hydraulic pump with capacity (discharge flow) of 171 ltr/min **45 U.S. gal/min** at rated engine rpm.

Relief valve setting ..... 27.4 MPa 280 kg/cm<sup>2</sup> **3,974 psi**  
Hydraulic cylinders ..... Double-acting, piston type

	Number of cylinders	Bore
Blade lift	2	100 mm <b>4"</b>
Blade tilt	1	120 mm <b>5"</b>
Blade angle	2	110 mm <b>4"</b>

Hydraulic oil capacity (refill):

Power angle tilt dozer ..... 101 ltr **26.7 U.S. gal**

Control valves:

3-spool control valve for Power Angle Tilt dozer

Positions:

Blade lift ..... Raise, hold, lower, and float

Blade tilt ..... Right, hold, and left

Blade angle ..... Right, hold, and left

Additional control valve required for ripper

Positions:

Ripper lift ..... Raise, hold, and lower



## DOZER EQUIPMENT

	Overall Length With Dozer mm ft.in	Blade Capacity m <sup>3</sup> yd <sup>3</sup>	Blade Width x Height mm ft.in	Max. Lift Above Ground mm ft.in	Max. Drop Below Ground mm ft.in	Max. Tilt Adjustment mm ft.in
<b>D61EXi-24</b>	5480	3.4	3250 x 1195	1025	580	435
Power Angle Tilt Dozer	<b>18'0"</b>	<b>4.5</b>	<b>10'8" x 3'11"</b>	<b>3'4"</b>	<b>1'11"</b>	<b>17"</b>
<b>D61PXi-24</b>	5480	3.8	3860 x 1155	1025	580	515
Power Angle Tilt Dozer	<b>18'0"</b>	<b>5.0</b>	<b>12'8" x 3'9"</b>	<b>3'4"</b>	<b>1'11"</b>	<b>20"</b>

Blade capacities are based on the SAE recommended practice J1265. Use of high-tensile-strength steel in moldboard for strengthened blade construction.