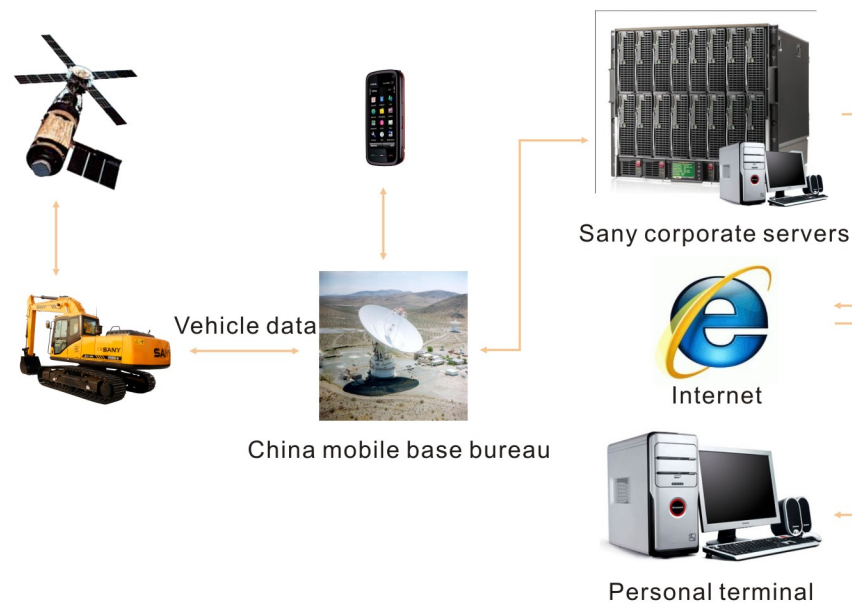


ECC (Enterprise Control Center)

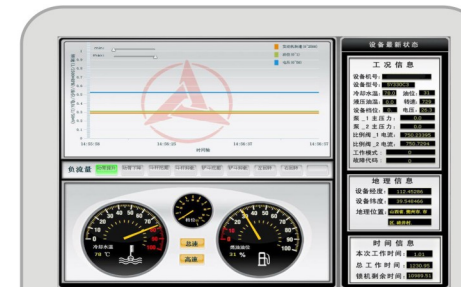
Track the machine working conditions anytime.....

SanyECC Intelligent Management

Using intelligent equipment management system (IEM), SanyECC can read equipment conditions in real time. It also provides comprehensive device management, parts inquiry and purchase, personal assistant, knowledge corner and online message function to meet the customers' needs by means of GPRS, GPS, GIS, artificial intelligence, as well as streaming media and other information technology tools. At the same time, the perfect equipment remote monitoring capabilities can help you track the equipment conditions, electronic archive for product service, and material used for actual assembly, information access, the real-time equipment maintenance information. You can also purchase accessories online and get remote technical support. It makes the link between the manufacturer and the customer closer.

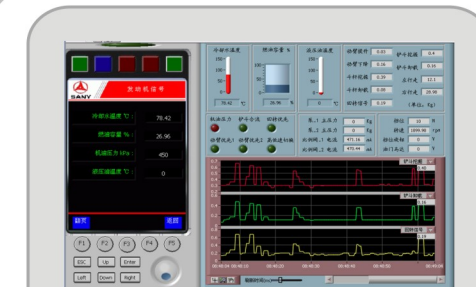


Enterprise Control



Equipment Management

The combination of the Internet with WAP allows you to get various types of conditions and location information of your excavator. In this way, you are able to, even at home, obtain information such as when the machine is started and shut down, how long the machine works for the day, and how much fuel it consumes. Machine operation information and fuel consumption details are available in related reports.



Details of Your Excavator

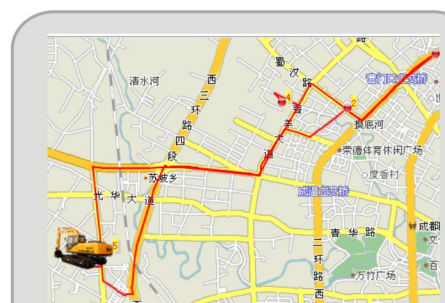
Via ECC remote monitoring center you can log on to the excavator machine controller interface and check the status of its working condition in real time. It can also record the details of the machine operation, monitor the use of machine by operator, and timely handle the faults of machine in order to ensure a longer service life.

Convenient Management Functions

With the aid of Internet it is easy and quick to inquire and monitor the use of your machine via SanyECC system that facilitates online inquiry and ordering of parts. If you temporarily have no access to the Internet, you can also login WAP network to acquire operating information (for a day or a week) of your machine via mobile phone. When your machine shows abnormality during operation, the system will immediately send a message to your designated mobile phone.

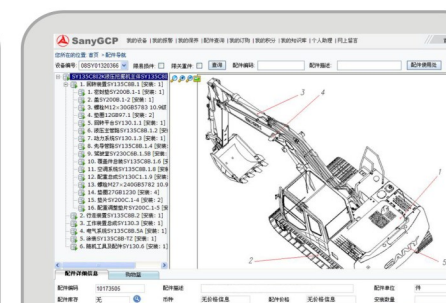
The screenshot shows the SanyECC web interface. On the left is a login form with fields for '用户名: admin', '密码: *****', and a '登录' button. Below the login form is a table titled '历史轨迹查询' (Historical Trace Query) with columns for '序号' (Serial Number), '时间' (Time), '地址' (Address), '经度' (Longitude), and '纬度' (Latitude). The table contains five rows of data representing machine movements in Chengde, Sichuan.

序号	时间	地址	经度	纬度
1	2010-2-30 10:34:17	四川省 成都市 成都市区	103.97	30.66
2	2010-3-05 11:25:22	四川省 成都市 成都市区	104.03	30.68
3	2010-3-10 03:10:11	四川省 成都市 成都市区	104.05	30.69
4	2010-4-10 01:52:40	四川省 成都市 成都市区	104.01	30.69
5	2010-4-22 15:20:14	四川省 成都市 成都市区	103.97	30.66



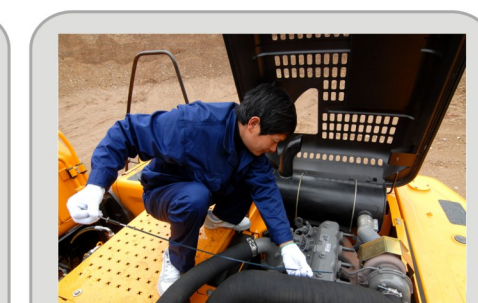
The Moving Trace Record

ECC can get full detail records of the moving trace of the equipment on a time basis, which can effectively prevent the machine from being stolen and monitor the behavior of operator.



Parts inquiry and ordering

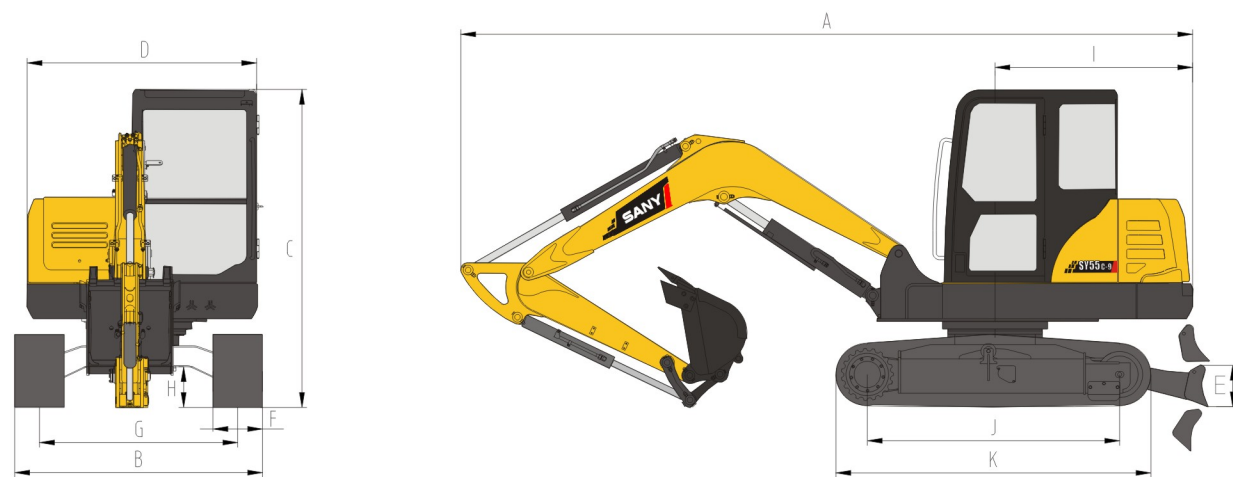
Electronic archive of machine: the visualized material list and pictures provide easy access to specific part and related information. Status-of-stock access window: online application renders customer a easy way for parts purchase.



Assisting customers for better maintenance

Equipment maintenance management: it also helps the customer maintain the equipment in time, and make sure the equipment works efficiently during its service life. Consumption points: Customers can obtain consumption points from every business dealing; the points can get further usage in the following dealings.

STANDARD EQUIPMENT

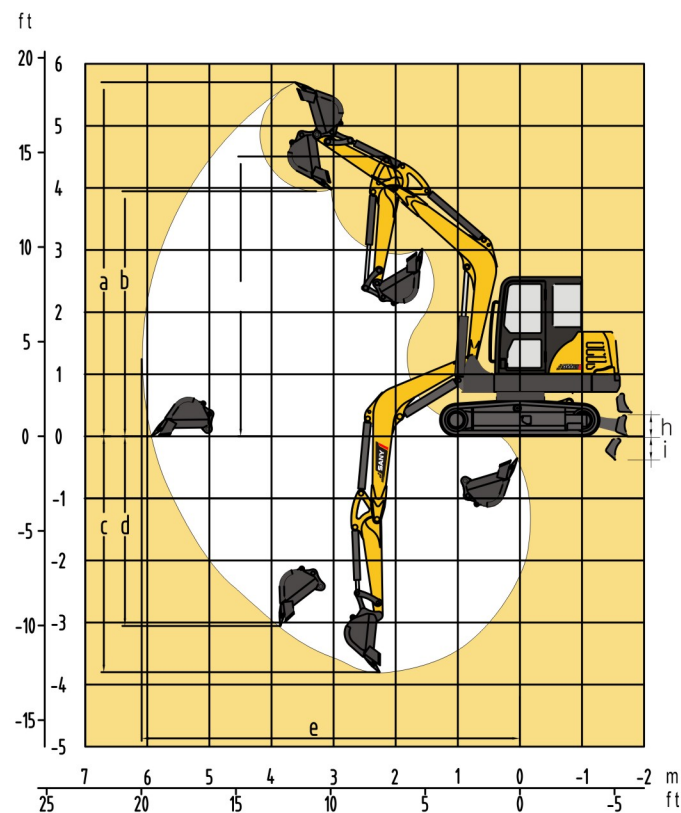


Machine Dimensions (mm)

Name	
A Length(Shipping)	5930
B Width(Shipping/Operation)	2000
C Height(Shipping)	2600
D Upper Width	1860
E Dozer blade height	340
F Std. Track Width	400
G Track Gauge	1600
H Min. Ground Clearance	330
I Tail Swing Radius	1640
J Length of Track on Ground	2045
K Track Length	2545

Working Ranges (mm)

Name	
a Max. cutting Height	5690
b Max. Dumping Height	3930
c Max. Digging Depth	3815
d Max. horizontal reach	6090
e Min. Swing Radius	2555
f Max. Height At Min. Swing Radius	4495



Engine

- GSB Mode Selection
- Start motor 24V
- Alternator 30A
- Air pre-filter
- Dry triple-filtering air cleaner
- Cylindrical engine oil filter
- Cylindrical fuel filter
- Fuel pre-filter
- Radiator with protective screen
- Auxiliary water tank for radiator
- Fan cowl
- Separately installed engine
- Oil-water separator

Hydraulic System

- Control valve with main relief valve
- Spare oil port for control valve
- Oil suction filter
- Oil return filter
- Pilot filter

Swing Platform

- Fuel level float
- Hydraulic oil level gauge
- Toolbox
- Swing brake
- Grease barrel holder
- Counterweight

Alarm

- Engine oil pressure lack
- Fuel oil lack
- Overheat of engine coolant
- Air filter blocking
- Engine over speed
- Voltage lower than specification
- Voltage higher than specification

Operator Station

- Noiseproof steel-structured cab
- Toughened light-color window
- 4 silicone rubber damping support
- Openable roof hatch, upper front window and left window
- Rear window, alternate exit
- Silent windshield wiper with washer
- Adjustable inclined seat with adjustable armrest
- AM-FM radio with digital clock
- Foot rest and floor mat
- Loudspeaker, rear view mirror
- Seat belt and fire extinguisher
- Cub holder and cab light
- Ashtray
- Storage box, literature bag
- Hydraulic lockout control
- Fully automatic air-conditioner

Air-conditioner system

- Cold and warm air-conditioner (Importing top grade)
- Control panel

Indicator light

- Auto idle
- Temperature of engine coolant
- High/Low travel speed
- Fault alarm
- Voltage lower/higher than specification
- Software download and communication

Others

- Standard battery
- Lockup engine hood
- Lockup fuel filler cap
- Anti-slip film, handhold and passage
- Travel direction mark
- Hand grease gun

Undercarriage

- Travel motor guard
- H-track guiding mechanism
- Hydraulic track tensioner
- Bolted sprocket
- Carrier roller and track roller
- Reinforced track link with pin seal
- 400 mm track shoes
- Bottom coverplate

Front Work Equipment

- Flange pin
- Bucket clearance adjustment
- Welded lever
- Central lubrication system
- Dust ring-seal of bucket pin for options

Monitoring System

- Auto-idle
- Large Color LED Monitor
- Fault diagnosis
- Engine warm up
- Engine coolant temperature