



# SANY

## POWER FOR YOU

Quality Changes the World

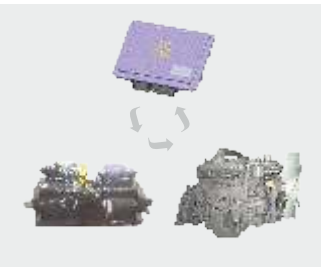
# C9 SERIES

## SY140C-9

- Operating Weight : 14000kg
- Bucket Capacity : 0.72m<sup>3</sup> GP
- Engine Power : 98HP(72.7KW)/2200rpm



### Advance Dynamic Control



- DOMCS intelligent control
- Positive flow control
- Different working modes

### High Profitability



- Low fuel consumption
- Higher working efficiency
- Lower maintenance cost

### Remote Monitoring System



- Advance GPRS monitoring
- Remote error diagnosis
- Smart machine alerts

### Stable & Reliable



- Proven hydraulic components
- Heavy duty structure
- Robust under carriage

## ENGINE

Model	Isuzu 4BG1-TABGC-03-C2
Type	4 Cylinder, Inline, Water Cooled
Rated Engine Power	98 HP (72.7 kW) / 2200 rpm
Max. Torque	357.6 N.m @ 1600 rpm
Batteries	2 X 12 V
Displacement	4.329 L

## CONTROL SYSTEM

Control System	DOMCS Intelligent Controller
Control Hydraulic System	Positive Flow
Working Modes	H, S, B
Remote Monitoring System	GPRS, GPS, GIS

## HYDRAULIC SYSTEM

Main Pumps	2 Variable Displacement Axial Piston Pumps
Max. Flow	2×121 lpm
Pilot Pump	1 Gear Pump
Travel Motor	2 Axial Piston Motor with Parking Brake
Swing Motor	1 Axial Piston Motor with Swing Holding Brake

## RELIEF VALVE SETTINGS

Implement Circuit	31.4 Mpa
Swing Circuit	25 Mpa
Travel Circuit	34.3 Mpa
Pilot Circuit	3.9 Mpa

## UNDERCARRIAGE & WORKING DEVICE

Track Shoes (Each Side)	44
Upper Rollers	1
Lower Rollers	7
Track Guard (Each Side)	1
Std. Track	500 mm
Std. Boom	4600 mm
Std. Arm	2100 mm
Std. Bucket	0.72 m <sup>3</sup> GP

## PERFORMANCE

Max. Travel Speed(High/Low)	5.04/2.94 km/h
Swing Speed	12 rpm
Grade ability	70% / 35°
Ground Pressure	43.09 kPa
Max. Tracking Force	124.09 kN
Bucket Digging Force	85.975 kN
Arm Digging Force	66.296 kN

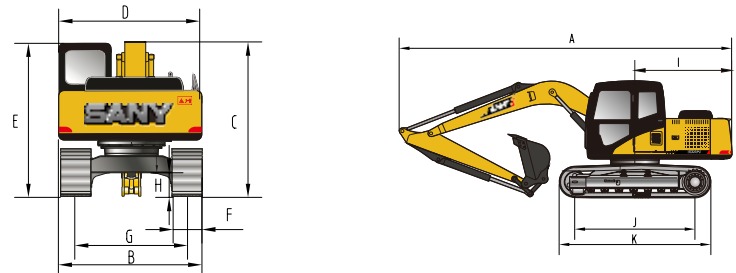
## SERVICE REFILL CAPACITIES

Hydraulic Tank	150 L (Tank)	120 L (Refill)
Fuel Tank	240 L	
Engine Oil	15 L	
Radiator	10 L	
Swing Device	3 L	
Travel Device	2x2.6 L	

## CAB

AC	Std.
Cabin Guard	Opt.

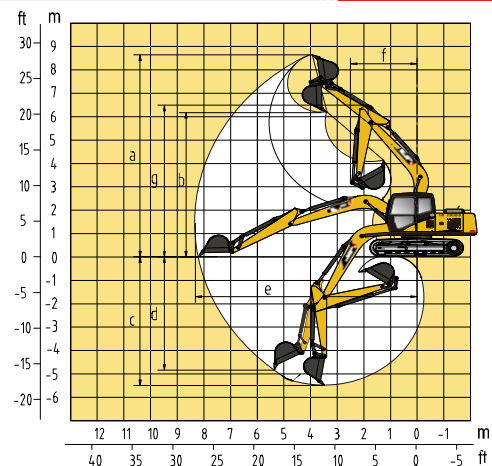
## DIMENSION (Unit: mm)



## DIMENSION (Unit: mm)

	Arm 2100	Arm 2500
A. Overall Length	7766	7766
B. Overall Width	2550	2550
C. Overall Height	2815	2815
D. Upper Width	2490	2490
E. Overall Height of Cab	2740	2740
F. Std. Track Shoe Width	500	500
G. Track Gauge	1990	1990
H. Min. Ground Clearance	425	425
I. Rear-end Swing Radius	2348	2348
J. Distance between Tumbles	2930	2930
K. Under Carriage Length	3665	3665

## WORKING RANGE



## WORKING RANGE (Unit: mm)

	Arm 2100	Arm 2500
a. Max. Cutting Height	8324	8633
b. Max. Dumping Height	5856	6147
c. Max. Digging Depth	5119	5498
d. Max. Vertical Digging Depth	4127	3495
e. Max. Digging Reach	7952	8318
f. Min. Swing Radius	2410	2419
g. Max. Height at Min. Swing Radius	6496	6497

## BUCKET

Capacity (m <sup>3</sup> )	Width (mm)	Weight (kg)	Tooth Point	Arm Length	
				2.1	2.5
0.72 GP-Std.	1076	584	5	✓	-
0.65 HD-Opt.	990	549	5	✓	✓

## SANY HEAVY INDUSTRY INDIA PVT. LTD.

### HEAD OFFICE

Address : Plot No. E-4, Chakan Industrial Area Phase-III,  
 Village : Kuruli, Taluka: Khed, District: Pune - 410501, Maharashtra, INDIA.  
 Tel : +91 21 35670288, Fax: +91 21 35670300  
 E-mail : [customercare@sany.in](mailto:customercare@sany.in)  
 Website : [www.sany.in](http://www.sany.in)

**Toll Free No.: 1800-209-3337**

Please Contact