

313F L GC Hydraulic Excavator Specifications

Engine

Engine Model	Cat C3.4B	
Gross Power – SAE J1995	55 kW	74 hp
Net Power – SAE J1349	52 kW	70 hp
Engine rpm		
Operation	1,700 rpm	
Travel	1,800 rpm	
Bore	99 mm	3.90 in
Stroke	110 mm	4.33 in
Displacement	3.4 L	207 in ³

Weights

Operating Weight	13 300 kg	29,300 lb
------------------	-----------	-----------

- Long Undercarriage, Reach Boom, R3.0 (9'10") Stick, GD 0.53 m³ (0.69 yd³) Bucket and 500 mm (20 in) Shoes.

Track

Number of Shoes (each side) – Long Undercarriage	46 pieces	
Number of Track Rollers (each side) – Long Undercarriage	7 pieces	
Number of Carrier Rollers (each side)	1 piece	

Swing Mechanism

Swing Speed	11.7 rpm	
Swing Torque	30.9 kN·m	22,791 lbf-ft

Drive

Maximum Travel Speed	5.5 km/h	3.4 mph
Maximum Drawbar Pull	109.9 kN	24,706 lbf

Hydraulic System

Main System – Maximum Flow (total)	240 L/min	63.4 gal/min
Maximum Pressure – Equipment	30.5 MPa	4,424 psi
Maximum Pressure – Travel	30.5 MPa	4,424 psi
Maximum Pressure – Swing	23 MPa	3,336 psi
Pilot System – Maximum Pressure	4120 kPa	598 psi
Boom Cylinder – Bore	110 mm	4 in
Boom Cylinder – Stroke	1015 mm	40 in
Stick Cylinder – Bore	120 mm	5 in
Stick Cylinder – Stroke	1197 mm	47 in
Bucket Cylinder – Bore	100 mm	4 in
Bucket Cylinder – Stroke	939 mm	37 in

Service Refill Capacities

Fuel Tank Capacity	250 L	66.0 gal
Cooling System	17.9 L	4.7 gal
Engine Oil	8 L	2.1 gal
Swing Drive	3 L	0.8 gal
Final Drive	3 L	0.8 gal
Hydraulic System (including tank)	164 L	43.3 gal
Hydraulic Tank	90.6 L	23.9 gal

Sound

ISO 6395 (external)	99 dB(A)
ISO 6396 (inside cab)	100 dB(A)

- When properly installed and maintained, the cab offered by Caterpillar, when tested with doors and windows closed according to ANSI/SAE J1166 OCT98, meets OSHA and MSHA requirements for operator sound exposure limits in effect at time of manufacture.
- Hearing protection may be needed when operating with an open operator station and cab (when not properly maintained or doors/windows open) for extended periods or in a noisy environment.

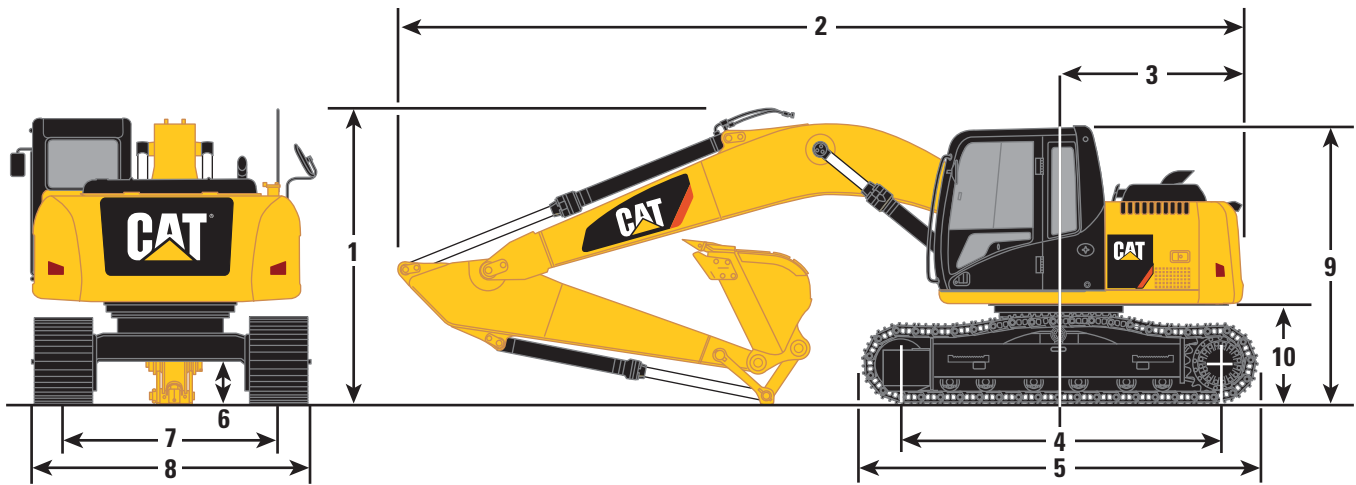
Standards

Brakes	ISO 10265
Cab ROPS	ISO 12117-2:2008
Cab OPG (Operator Protective Guards)	ISO 10262:1998 Level 2 SAE J1356 MAR2013

313F L GC Hydraulic Excavator Specifications

Dimensions

All dimensions are approximate.



Boom Options

Reach Boom
4.65 m (15'3")

Stick Options

R3.0 (9'10")

R2.5 (8'2")

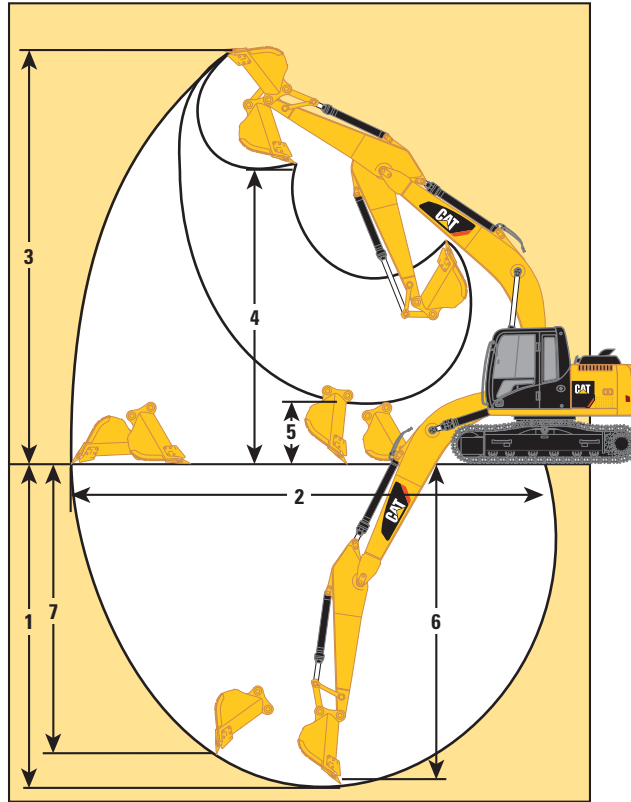
	R3.0 (9'10")	R2.5 (8'2")
1 Shipping Height	2830 mm 9'3"	2830 mm 9'3"
2 Shipping Length – Long Undercarriage	7700 mm 25'3"	7680 mm 25'2"
Shipping Length with Blade – Long Undercarriage	7960 mm 26'1"	7940 mm 26'0"
3 Tail Swing Radius	2180 mm 7'1"	2180 mm 7'1"
4 Length to Center of Rollers – Long Undercarriage	3040 mm 10'0"	3040 mm 10'0"
5 Track Length – Long Undercarriage	3740 mm 12'3"	3740 mm 12'3"
6 Ground Clearance	440 mm 1'5"	440 mm 1'5"
7 Track Gauge – Long Undercarriage (shipping)*	1990 mm 6'6"	1990 mm 6'6"
8 Transport Width – Long Undercarriage		
500 mm (20 in) Shoes	2490 mm 8'2"	2490 mm 8'2"
700 mm (28 in) Shoes	2690 mm 8'10"	2690 mm 8'10"
9 Cab Height	2760 mm 9'1"	2760 mm 9'1"
Cab Height with Top Guard	2900 mm 9'6"	2900 mm 9'6"
10 Counterweight Clearance	900 mm 2'11"	900 mm 2'11"

*With GD 0.53 m³ (0.69 yd³) Bucket.

313F L GC Hydraulic Excavator Specifications

Working Ranges

All dimensions are approximate.



Boom Options

Reach Boom
4.65 m (15'3")

Stick Options

R3.0 (9'10")

R2.5 (8'2")

Bucket

GD 0.53 m³ (0.69 yd³)

GD 0.53 m³ (0.69 yd³)

	R3.0 (9'10")		R2.5 (8'2")	
	GD 0.53 m ³ (0.69 yd ³)		GD 0.53 m ³ (0.69 yd ³)	
1 Maximum Digging Depth	6040 mm	19'9"	5540 mm	18'2"
2 Maximum Reach at Ground Line	8620 mm	28'3"	8170 mm	26'10"
3 Maximum Cutting Height	8710 mm	28'6"	8490 mm	27'8"
4 Maximum Loading Height	6330 mm	20'9"	6100 mm	20'0"
5 Minimum Loading Height	1530 mm	5'0"	2020 mm	6'8"
6 Maximum Depth Cut for 2240 mm (8 ft) Level Bottom	5860 mm	19'2"	5330 mm	17'6"
7 Maximum Vertical Wall Digging Depth	5200 mm	17'0"	4840 mm	15'1"
Bucket Digging Force (SAE)	86 kN	19,300 lbf	86 kN	19,300 lbf
Stick Digging Force (SAE)	57 kN	12,800 lbf	64 kN	14,400 lbf