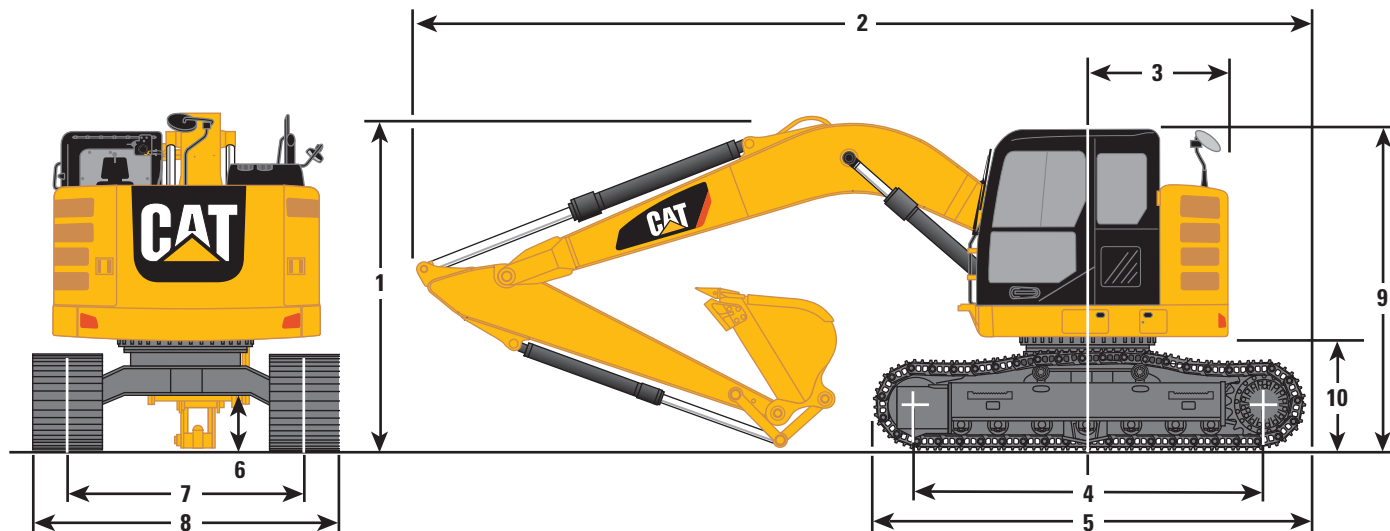


# 315F L Hydraulic Excavator Specifications

## Dimensions

All dimensions are approximate.



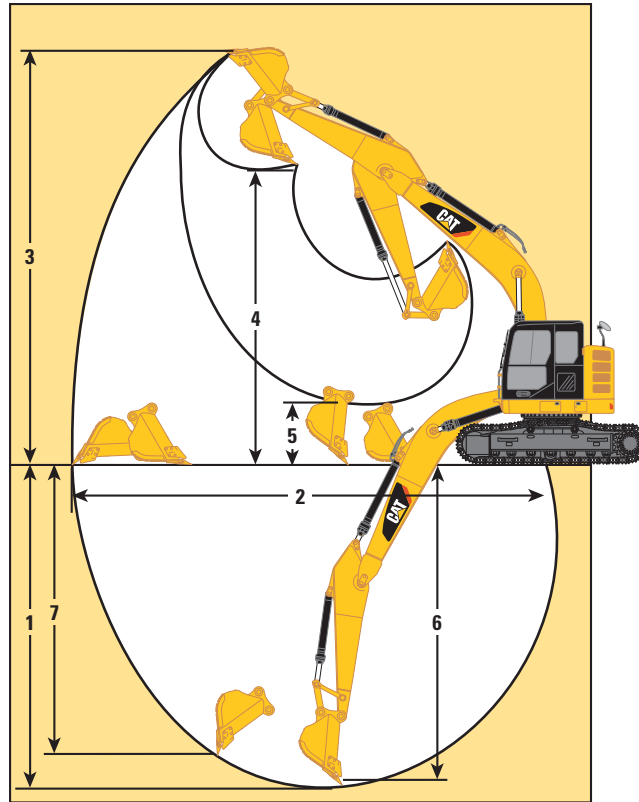
Boom Type	Reach Boom 4.65 m		Power Offset Boom 4.37 m
Stick Size	R3.0	R2.5	R2.13
<b>1</b> Shipping Height	3000 mm	3000 mm	3000 mm
<b>2</b> Shipping Length			
Long Undercarriage	7450 mm	7450 mm	7560 mm
Long Undercarriage with Blade	8010 mm	8010 mm	8010 mm
<b>3</b> Tail Swing Radius			
Heavy Counterweight	1530 mm	1530 mm	1530 mm
<b>4</b> Length to Center of Rollers – Long Undercarriage	3040 mm	3040 mm	3040 mm
<b>5</b> Track Length – Long Undercarriage	3750 mm	3750 mm	3750 mm
<b>6</b> Ground Clearance	440 mm	440 mm	440 mm
<b>7</b> Track Gauge – Long Undercarriage (shipping)*	1990 mm	1990 mm	1990 mm
<b>8</b> Transport Width – Long Undercarriage			
500 mm Shoes	2490 mm	2490 mm	2490 mm
600 mm Shoes	2590 mm	2590 mm	2590 mm
700 mm Shoes	2690 mm	2690 mm	2690 mm
<b>9</b> Cab Height	2810 mm	2810 mm	2810 mm
Cab Height with Top Guard	2950 mm	2950 mm	2950 mm
<b>10</b> Counterweight Clearance	860 mm	860 mm	860 mm

\*With GD 0.53 m<sup>3</sup> bucket.

# 315F L Hydraulic Excavator Specifications

## Working Ranges

All dimensions are approximate.



Boom Type	Reach Boom 4.65 m	
	R3.0	R2.5
Stick Size		
Bucket	0.53 m <sup>3</sup>	0.53 m <sup>3</sup>
1 Maximum Digging Depth	5950 mm	5450 mm
2 Maximum Reach at Ground Level	8680 mm	8230 mm
3 Maximum Cutting Height	9640 mm	9310 mm
4 Maximum Loading Height	7190 mm	6860 mm
5 Minimum Loading Height	2060 mm	2500 mm
6 Maximum Depth Cut for 2440 mm Level Bottom	5770 mm	5240 mm
7 Maximum Vertical Wall Digging Depth	5280 mm	4880 mm