

313F L GC Hydraulic Excavator Specifications

Engine

Engine Model	Cat C3.4B	
Engine Power – ISO 14396	55 kW	74 hp
Net Power – SAE J1349	52 kW	70 hp
Engine rpm		
Operation	1,700 rpm	
Travel	1,800 rpm	
Bore	99 mm	3.90 in
Stroke	110 mm	4.33 in
Displacement	3.4 L	207 in ³

Weights

Operating Weight	13 300 kg	29,300 lb
• Long Undercarriage, Reach Boom, R3.0 (9'10") Stick, GD 0.53 m ³ (0.69 yd ³) Bucket and 500 mm (20 in) Shoes.		

Track

Number of Shoes (each side) – Long Undercarriage	46 pieces
Number of Track Rollers (each side) – Long Undercarriage	7 pieces
Number of Carrier Rollers (each side)	1 piece

Swing Mechanism

Swing Speed	11.7 rpm	
Swing Torque	30.9 kN·m	22,791 lbf-ft

Drive

Maximum Travel Speed	5.3 km/h	3.3 mph
Maximum Drawbar Pull	109.9 kN	24,706 lbf

Hydraulic System

Main System – Maximum Flow (total)	240 L/min	63.4 gal/min
Maximum Pressure – Equipment	30.5 MPa	4,424 psi
Maximum Pressure – Travel	30.5 MPa	4,424 psi
Maximum Pressure – Swing	23 MPa	3,336 psi
Pilot System – Maximum Pressure	4120 kPa	598 psi
Boom Cylinder – Bore	110 mm	4 in
Boom Cylinder – Stroke	1015 mm	40 in
Stick Cylinder – Bore	120 mm	5 in
Stick Cylinder – Stroke	1197 mm	47 in
Bucket Cylinder – Bore	100 mm	4 in
Bucket Cylinder – Stroke	939 mm	37 in

Service Refill Capacities

Fuel Tank Capacity	250 L	66.0 gal
Cooling System	11 L	2.9 gal
Engine Oil	8 L	2.1 gal
Swing Drive	2.4 L	0.6 gal
Final Drive	3 L	0.8 gal
Hydraulic System (including tank)	162 L	42.8 gal
Hydraulic Tank	90.6 L	23.9 gal

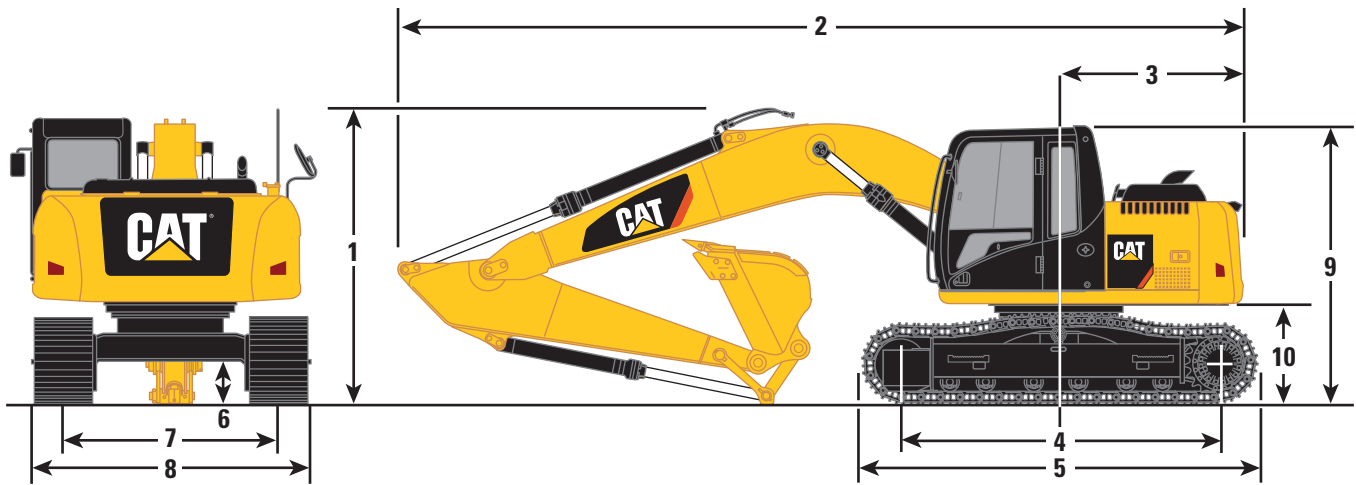
Standards

Brakes	ISO 10265
Cab/FOGS	ISO 10262
Cab/ROPS	ISO 12117-2:2008

313F L GC Hydraulic Excavator Specifications

Dimensions

All dimensions are approximate.



Boom Options

Reach Boom
4.65 m (15'3")

Stick Options

R3.0 (9'10")

R2.5 (8'2")

	R3.0 (9'10")		R2.5 (8'2")	
1 Shipping Height	2830 mm	9'3"	2830 mm	9'3"
2 Shipping Length – Long Undercarriage	7700 mm	25'3"	7680 mm	25'2"
Shipping Length with Blade – Long Undercarriage	7960 mm	26'1"	7940 mm	26'0"
3 Tail Swing Radius	2180 mm	7'1"	2180 mm	7'1"
4 Length to Center of Rollers – Long Undercarriage	3040 mm	10'0"	3040 mm	10'0"
5 Track Length – Long Undercarriage	3740 mm	12'3"	3740 mm	12'3"
6 Ground Clearance	440 mm	1'5"	440 mm	1'5"
7 Track Gauge – Long Undercarriage (shipping)*	1990 mm	6'6"	1990 mm	6'6"
8 Transport Width – Long Undercarriage				
500 mm (20 in) Shoes	2490 mm	8'2"	2490 mm	8'2"
700 mm (28 in) Shoes	2690 mm	8'10"	2690 mm	8'10"
9 Cab Height	2760 mm	9'1"	2760 mm	9'1"
Cab Height with Top Guard	2900 mm	9'6"	2900 mm	9'6"
10 Counterweight Clearance	900 mm	2'11"	900 mm	2'11"

*With GD 0.53 m³ (0.69 yd³) Bucket.