

# 316F L Hydraulic Excavator Specifications

## Engine

Engine Model	Cat C4.4 ACERT	
Net Power – SAE J1349	88 kW	117 hp
Engine Power – ISO 14396	91 kW	122 hp
Bore	105 mm	4.13 in
Stroke	127 mm	5.00 in
Displacement	4.4 L	269 in <sup>3</sup>

## Weights

Minimum Operating Weight*	17 500 kg	38,580 lb
Maximum Operating Weight**	18 100 kg	39,900 lb

\*5.1 m (16'9") boom, 2.9 m (9'6") stick, 2.8 mt (3.08 t) counterweight, 0.76 m<sup>3</sup> (1.00 yd<sup>3</sup>) GD bucket, and 600 mm (24") shoes.

\*\*5.1 m (16'9") boom, 3.1 m (10'2") stick, 3.05 mt (3.36 t) counterweight, 0.76 m<sup>3</sup> (1.00 yd<sup>3</sup>) GD bucket, 700 mm (28") shoes.

## Hydraulic System

Main System – Maximum Flow (Total)	300 L/min	79 gal
Maximum Pressure – Equipment	35 000 kPa	5,076 psi
Maximum Pressure – Travel	35 000 kPa	5,076 psi
Maximum Pressure – Swing	25 000 kPa	3,626 psi
Pilot System – Maximum Flow	25 L/min	6.6 gal/min
Pilot System – Maximum Pressure	4120 kPa	598 psi
Boom Cylinder – Bore	110 mm	4 in
Boom Cylinder – Stroke	1193 mm	47 in
Stick Cylinder – Bore	120 mm	5 in
Stick Cylinder – Stroke	1331 mm	52 in
Bucket Cylinder – Bore	110 mm	4 in
Bucket Cylinder – Stroke	1039 mm	41 in

## Drive

Maximum Travel Speed	5.3 km/h	3.3 mph
Maximum Drawbar Pull	156 kN	35,070 lbf

## Swing Mechanism

Swing Speed	8.9 rpm	
Swing Torque	49.6 kN·m	36,580 lb-ft

## Service Refill Capacities

Fuel Tank Capacity	290 L	76.61 gal
Cooling System	26 L	6.9 gal
Engine Oil (with filter)	13.5 L	3.57 gal
Swing Drive	8 L	2.1 gal
Final Drive (each)	8 L	2.1 gal
Hydraulic System (including tank)	190 L	50.19 gal
Hydraulic Tank	106 L	28.00 gal
DEF Tank Capacity	20.5 L	5.4 gal

## Track

Number of Shoes (each side)	44 pieces
Number of Track Rollers (each side)	7 pieces
Number of Carrier Rollers (each side)	2 pieces

## Sound Performance

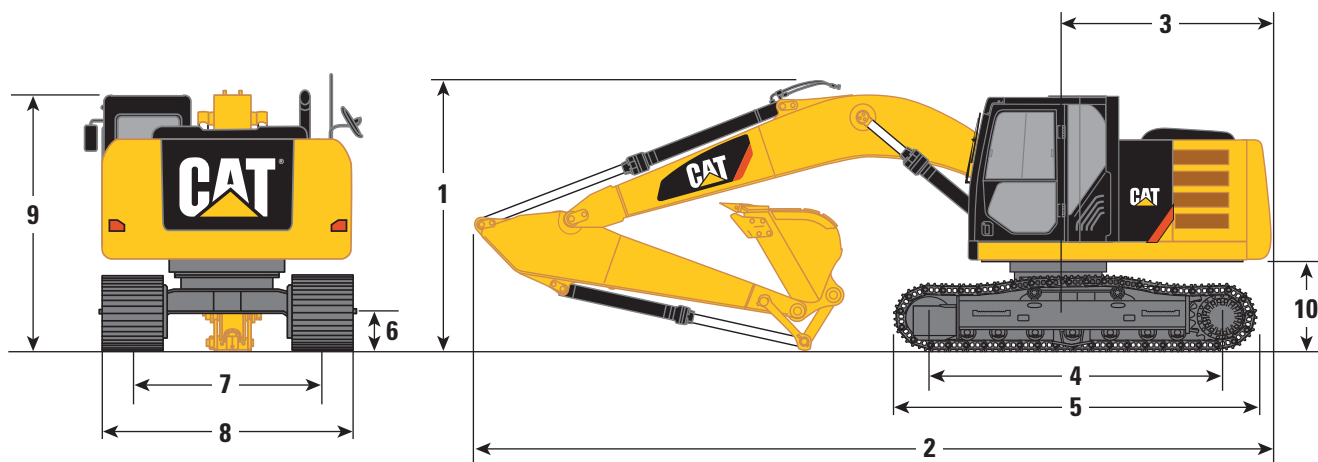
Operator – ISO 6396	71 dB(A)
Spectator – ISO 6395	102 dB(A)

- When properly installed and maintained, the cab offered by Caterpillar, when tested with doors and windows closed according to ANSI/SAE J1166 OCT98, meets OSHA and MSHA requirements for operator sound exposure limits in effect at time of manufacture.
- Hearing protection may be needed when operating with an open operator station and cab (when not properly maintained or doors/windows open) for extended periods or in noisy environment.

# 316F L Hydraulic Excavator Specifications

## Dimensions

All dimensions are approximate.



Stick	Reach Booms 5.1 m (16'9")	
	R3.1 (10'2")	R2.9 (9'6")
	mm (ft)	mm (ft)
<b>1</b> Shipping Height*	3190 (10'5")	3100 (10'2")
Shipping Height at Boom Top	3190 (10'5")	3100 (10'2")
Shipping Height with Hand Rail	2930 (9'7")	2930 (9'7")
Shipping Height with Top Guard	3100 (10'2")	3100 (10'2")
<b>2</b> Shipping Length	8570 (28'1")	8570 (28'1")
<b>3</b> Tail Swing Radius	2500 (8'2")	2500 (8'2")
<b>4</b> Length to Center of Rollers	3170 (10'5")	3170 (10'5")
<b>5</b> Track Length	3970 (13'0")	3970 (13'0")
<b>6</b> Ground Clearance	440 (1'5")	440 (1'5")
<b>7</b> Track Gauge	1990 (6'6")	1990 (6'6")
<b>8</b> Transport Width		
600 mm (24") Shoes	2590 (8'6")	2590 (8'6")
700 mm (28") Shoes	2690 (8'10")	2690 (8'10")
<b>9</b> Cab Height	2890 (9'6")	2890 (9'6")
Cab Height with Top Guard	3100 (10'2")	3100 (10'2")
<b>10</b> Counterweight Clearance**	1010 (3'4")	1010 (3'4")

All dimensions were calculated with a 0.76 m<sup>3</sup> (1.00 yd<sup>3</sup>), 900 mm (41 in) bucket.

\*Including shoe lug height.

\*\*Without shoe lug height.