



RC180

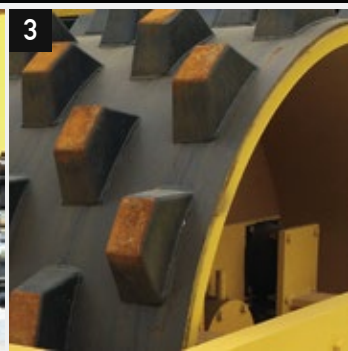
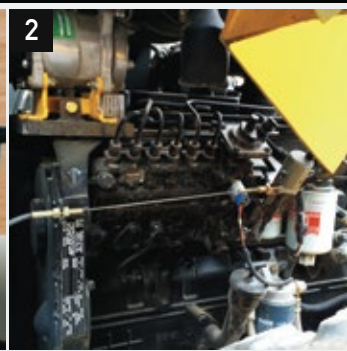
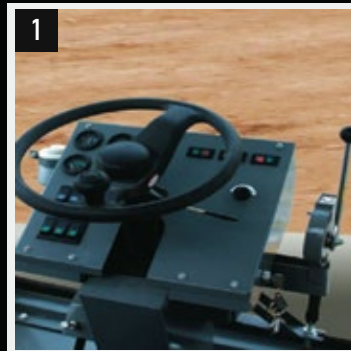
COMPACTOR



Flat-out value proven productivity, reliability, durability.



A machine needs to work to earn its keep. Rhino Equipment Vibratory Soil Compactors are well equipped to perform a wide range of applications. Options like padfoot shell kits, leveling blades and Rhino's dual vibration system add capability, making your Rhino Vibratory Soil Compactor the machine of choice no matter what the application requires.



1. Operating station adjusts to suit operator comfort, and the console provide fingertip access to machine features and operating information.
2. Reliable and durable Cummins engine.
3. A tamping foot available roller has feet, or pads, that penetrate the soil, compacting from the bottom to the top for uniform density.

OPERATING WEIGHT

Base Machine Weight with Cab Kg (lb)	18,000(39,683)
Weight at the Drum with Cab Kg (lb)	9,500(20,944)
Weight at the Rear Axel with Cab Kg (lb)	8,500(18,739)
Operating Weight with Drum Drive System Kg (lb)	18,200(40,124)
Operating Weight with Drum Drive System and Pad Foot Kg (lb)	19,130(42,174)
Static Linear Load kg/cm (lb/in)	47.0(26.8)

VIBRATORY SYSTEM

Min. Frequency Hz (vpm)	35(2,100)
Max. Frequency Hz (vpm)	28(1,680)
Nominal Amplitude @ Max. Frequency	
High mm (in)	1.9(0.07)
Low mm (in)	0.95(0.04)
Centrifugal Force	
High kN (lbf)	375(84,303)
Low kN (lbf)	270(60,698)

POWER TRAIN

Engine Make / Model	Cummins 6BT5.9 or Rhino
Net Power kW (Hp) @ 2,300 rpm	132(177)
Displacement L (cu. In)	5.9(360)
Peak Torque Nm (ft-lb) @ 1,600 rpm	620(457)
Emissions Rating (optional)	Tier 2 (Tier 3, Tier 4)
Fuel System	Inyección directa
Lubrication	Roscado de flujo directo
Aspiration	Turbocargado
Air Cleaner	Bajo el capó, tipo seco de dos elementos
Fan Drive	Transmisión por correas
Electrical System	24 Voltios con Alternador 70 Amp
Axle	Deslizamiento limitado con reducción planetaria
Tire	23.1-26 12 Ply
Oscillation Angle of Vibration Drum	17.5 grados

TRANSMISSION

Type	Hidrostático de centro cerrado, engranaje constante
Travel Speed kph (mph)	11.0(6.8)

Equipment specifications and images may change without notice from Rhino Equipment Group Inc.

HYDRAULIC SYSTEM

Pump Type	Bomba de pistón, de caudal variable, centro cerrado
System Pressure Mpa (psi)	40(5,802)
Vibration System Pressure Mpa (psi)	28(4,061)
Steering System Pressure Mpa (psi)	15(2,176)

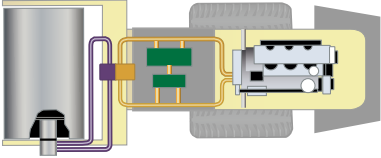



BRAKE SYSTEM

Service Brakes	Hidráulico, asistido neumáticamente, discos en las dos ruedas: Frenado dinámico por la transmisión y motor hidráulico de tracción delantera
Parking Brake	cada vez que la palanca de control de dirección se mueve a la posición de neutro. Activado manualmente, freno de disco montado sobre el eje de salida de transmisión.

REFILL CAPACITIES L (gal)

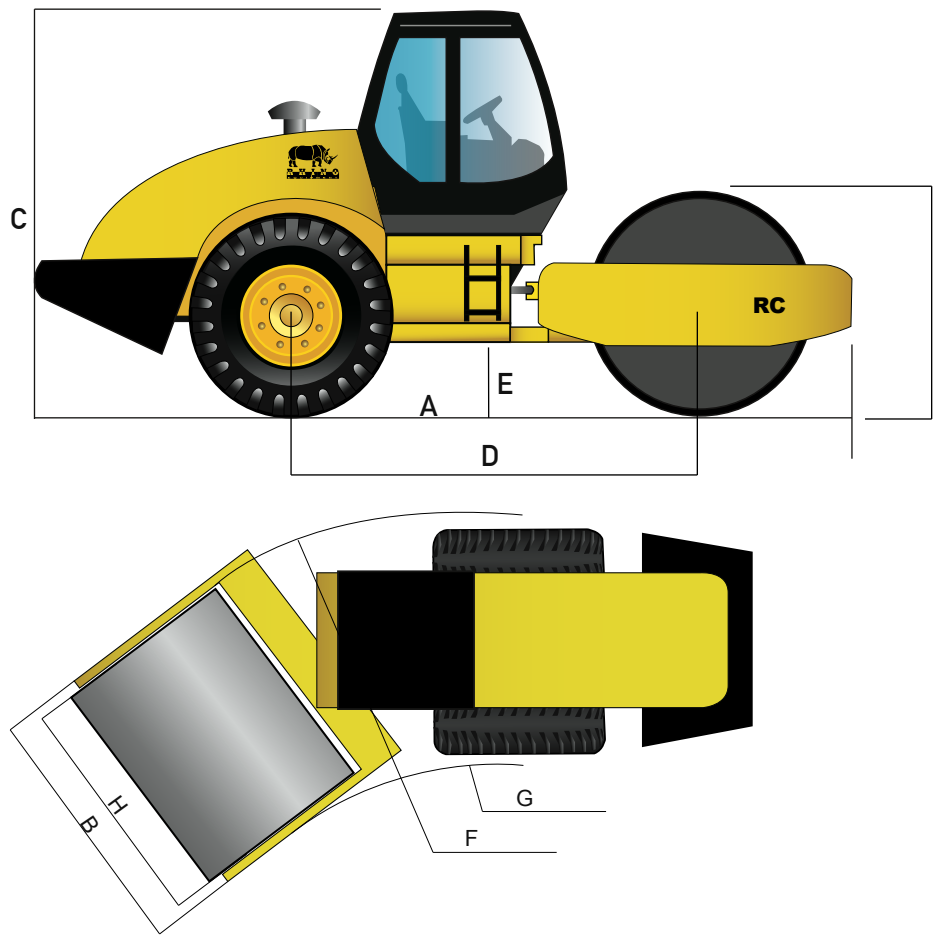
Fuel Tank	300(79)
Engine Oil	15(4)
Hydraulic Tank	200(53)
Gear Box	2.2(0.6)
Axle Oil	18(5)
Brake System	1.5(0.4)
Vibration Drum (both sides, each)	56(15)

OPTIONS

	Drum Drive
	Pads
	Dozer Blade
	Water Pressure

Tier 3, Tier 4 engine.

Equipment specifications and images may change without notice from Rhino Equipment Group Inc.



MACHINE DIMENSIONS

A Overall Length mm (ft)	6,435(21.1)
B Overall Width mm (ft)	2,280(7.5)
C Max. Machine Height mm (ft)	3,090(10.1)
D Wheelbase mm (ft)	3,380(11.1)
E Ground Clearance mm (ft)	480(1.6)
F Min. Turning Radius mm (ft)	7,500(24.6)
G Articulation Angle	35 grados
Gradeability	30%

DRUM DIMENSIONS

H Drum Width mm (in)	2,100(82.7)
I Drum Diameter mm (in)	1,450(57.1)
Drum Shell Thickness mm (in)	25(1.0)

Equipment specifications and images may change without notice from Rhino Equipment Group Inc.