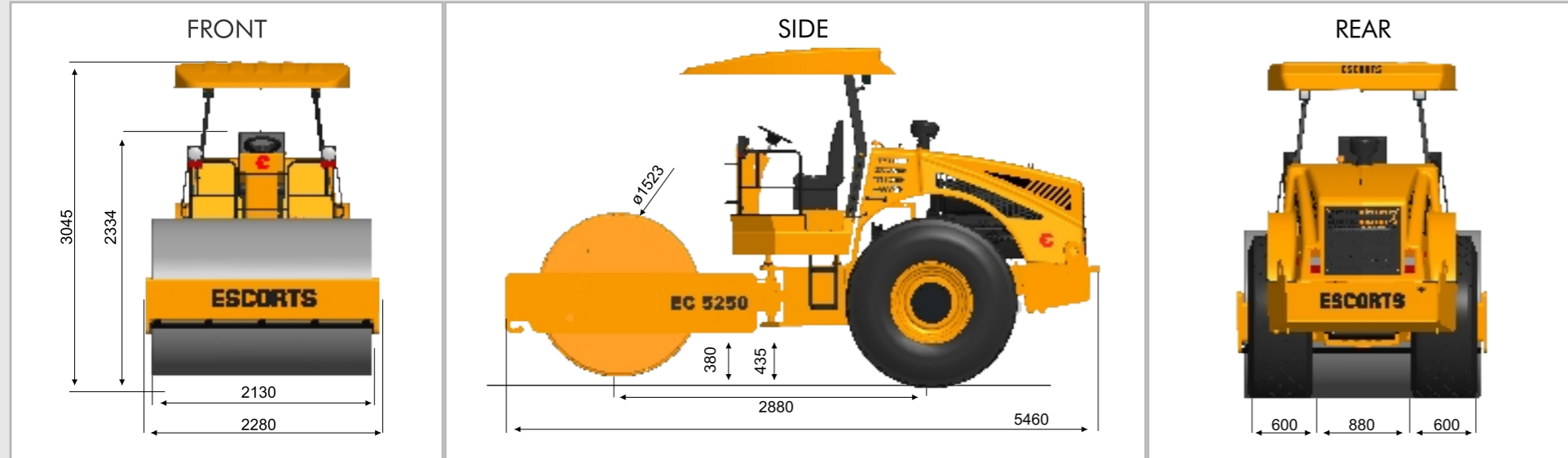


**DIMENSIONS**



**PROVEN**  
**EFFICIENT**  
**CONTEMPORARY**

# RE-ENGINEERED EXCELLENCE. DELIVERING VALUES

EC 5250 Vibratory Soil Compactor has been redesigned and comes with enhanced safety. With highest gradeability and travelling speed, EC 5250 is one of the most fuel efficient machine in its class.



## TECHNICAL SPECIFICATIONS

DRIVE	Units	STD	DD	PD
Hydrostatic Drive, Infinitely Variable Planetary Axle with No-spin Differential		Rear Wheel	All-Wheel	All-Wheel
VIBRATION SYSTEM		Hydrostatic Drive		
Frequency	Hz	30	30	30
High Amplitude	mm	1.72	1.72	1.53
Low Amplitude	mm	0.8	0.8	-
SPEED				
Working Speed	Km/hr	0-9	0-6	0-6
Travelling Speed	Km/hr	0-23	0-10	0-10
GRADEABILITY				
Gradeability	%	40	65	45
STEERING		Articulated Hydrostatic Steering		
Steering Angle			±36°	
Oscillation Angle			±10°	

## OPERATING SPECIFICATIONS

WEIGHTS	Units	STD	DD	PD
Maximum operating Weight	Kg	10350	10550	11950
Weight on Drum	Kg	5050	5250	6650
Weight on Tyres	Kg	4300	4300	4300
Static Linear Load	Kg/Cm	23.7	24.6	-
DIMENSIONS				
Overall Width	mm	2280	2370	2370
Overall Length	mm	5460	5460	5460
Overall Height	mm	3045	3045	3095
Drum Diameter	mm	1523	1523	1723
Drum Width	mm	2130	2130	2130
Ground Clearance	mm	435	435	485
Wheel Base	mm	2880	2880	2880
Turning Radius-outer/inner	mm	5600/3400	5600/3400	5600/3400
Pad Foot No	No's	-	-	150
ENGINE		HA 694		
Make		KOEL		
Specification		6 Cylinder, Air Cooled, Bharat Stage III (CEV) Emission Norms		
Rated power		102 hp at 2500 Rpm		

## OTHER SPECIFICATIONS

BRAKES	Units	STD	DD	PD
Service Brake		Hydrostatic		
Parking Brake		Spring applied Hydraulically Released		
Emergency Stop		Hydrostatic Drive & Spring Applied Brake		
TYRES				
2 Nos. All Weather Pattern		23.1/26-12 PR		
TANK CAPACITY				
Fuel Tank Capacity	Lts	265		
Hydraulic Oil Tank Capacity	Lts	80		
ELECTRICAL SYSTEM				
Operating Voltage 12 V, 150Amh.				

## STANDARD & OPTIONAL FITMENTS

STANDARD EQUIPMENT
Canopy with Sun Top, Cushioned Seat, Rear View Mirror, Instrument Panel With a range of Control instruments including Hour Meter, Light Equipment, Lifting Eyes, Tool Box, Brake Warning Light.
SAFETY FEATURES
Neutral Start Switch, Air Filter Clog Indicator, Hydraulic Filter Clog Indicator, V-belt Failure auto engine shut off, Reverse buzzer.
OPTIONAL FITMENT
Operator Cabin, Cold Starting Kit, Engine Cut-off at High Temperature & Low Pressure, Compactobar with frequency meter.

Note: Technical Modifications Reserved. Tolerance on Weights ± 2.5% over Indicated Values

# EC 5250

VIBRATORY SOIL COMPACTOR

Powered by KOEL Engine –  
HA 694 Turbo Charged 102 HP @ 2500 rpm

Top of the line aggregates

Excellent Serviceability, Single hood FRP Rear cover,  
80% of the Hydraulics can be serviced from outside

Enhanced safety features –  
engine shuts off in case of V- belt failure.



Ergonomic driver seat for perfect  
all-round visibility and optimum driving comforts

Highest Travelling Speed  
in its' Category– 23 Kmph

Highest gradeability in its class of 40%

High Steering angle  $\pm 36^\circ$





## ENSURING HIGH PRODUCTIVITY AT SITE...

With Optimum weight distribution on front & rear modules, EC 5250 delivers on compaction over a very wide range of layer thicknesses. The combination of high gradeability and the high travelling speed increase the effectiveness and ensure high productivity at site.



Minimum operating cost



Fuel efficient



Productive over wide range of larger thickness



Better compaction



Versatile with highest gradeability



High travel speed.