

SV400-2 SERIES **Vibratory Soil Compactors**

SAKAI



**Road Embankments, Building
Foundations, Site Preparation**

Dual Amplitude – Dual Frequency

High Centrifugal Force Outputs

Most Advanced Shock Isolation System

Unique, Heavy-Duty Hitch Design

Superior Steering Articulation/Oscillation

Up To 62% Gradability

The Sakai SV400-2 Series Vibratory Soil Compactors are designed for medium production compaction jobs on a wide range of soil types and rockfill – highway bases, embankments, building foundations, and commercial and industrial projects. The minimal side overhang and high ground clearance on both sides also makes these compactors ideal for work alongside retaining walls, foundations and other obstructions. Sakai offers the SV400-2 Series in four different models to meet the challenges presented by different soil types.



SV400D-2



SV400T-2

SV400D-2 – Provides a smooth drum with drum and axle drive for use on sand, gravel and semi-cohesive soils.

SV400T-2 – Provides a padfoot drum with drum and axle drive for use on clays, silts and cohesive soils.



SV400TF-2



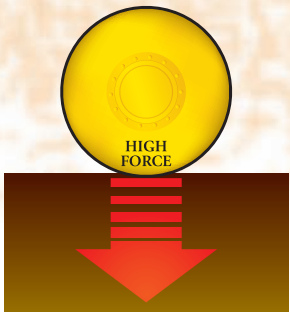
SV400TB-2

SV400TF-2 – Provides a bolt-on smooth drum shell that mounts over the padfoot drum for quick drum switches in locations where soil conditions vary.

SV400TB-2 – Adds a strike-off blade to the padfoot drum model for backfilling and leveling applications.

Powerful Performance

- **High Compaction Force** – The SV400-2 Series are designed to meet density requirements fast. The dual frequency and dual amplitude vibration system is preset for low amplitude/high vpm and high amplitude/low vpm – providing the optimum vibration setting under almost any soil condition. The setting is easily selected via a switch at the operator’s station. High nominal amplitudes and up to 28,660 pounds of centrifugal force over the 67” wide drum ensure rapid compaction of many soil types, thick lifts and rockfill.

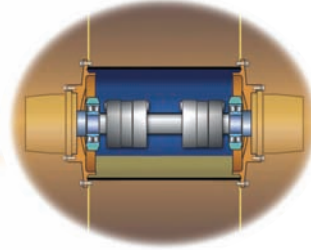


- **Long-Life Vibration System** – The Sakai SV400-2 is designed for long life and easy maintenance. The hydraulic motor directly drives the dual amplitude eccentric shaft vibrator, and the vibrator bearings are automatically lubricated by an oil bath even while the roller is on a steep incline.

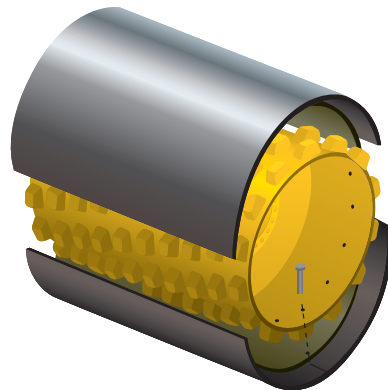
- **Superior Traction** – The SV400-2 Series are propelled by both the drum and tires. Well-balanced front and rear weight distribution and a standard no-spin differential gives these machines superior traction and slope climbing ability on grades up to 62% while compacting. A two-speed hydrostatic transmission provides variable speed ranges – permitting the ideal speed selection for working applications or site-to-site transit.



The drum drive feature also serves to pull material beneath the drum – eliminating bow wave build up while promoting compaction.



- **Smooth/Padfoot Combination Drum** – The SV400TF-2 model offers a quick change, dual-purpose drum. Sakai takes its padfoot drum and adds a smooth drum shell – adding only 2” to the drum diameter. Competitors’ “convertible” drums – which add a 4” to 6” padfoot shell to a smooth drum – dramatically change the geometry between the vibrating drum and the rear wheels, causing traction problems. Better still, the Sakai conversion does not require any modification to the hydraulic system and can be done on the jobsite in less than two hours.

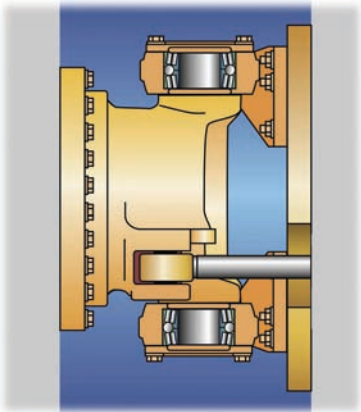


Smooth/Padfoot Combination Drum – Padfoot drum for cohesive silts and clays. Smooth drum for semi-cohesive and granular material.

- **Efficient Engine** – A highly efficient, 100 hp Deutz liquid-cooled diesel engine provides optimum power with fuel efficiency and meets current environmental regulations.

Heavy-Duty Components

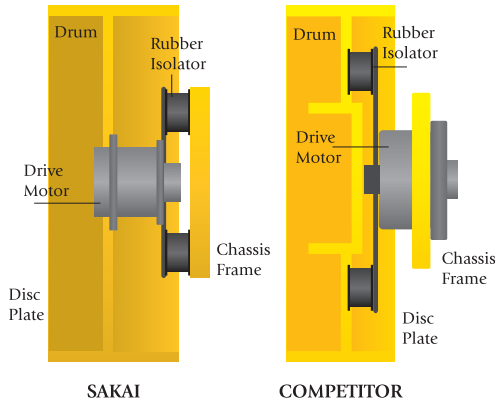
- **Unique Hitch Design** – All Sakai vibratory compactors feature a unique, heavy-duty hitch design that is far stronger than competitive models. The system consists of taper roller bearings for articulated steering and a large ball bearing assembly for oscillation. This joint system provides unmatched chassis stability that keeps the drum and wheels in contact with the ground over the roughest terrain. Lubrication service intervals are only required at 250 hours or once per year. As a bonus, the operator benefits by smoother steering, control and comfort.



High Safety Standards

- **ROPS and Seat Belts** – Sakai believes that operator safety is a high priority. ROPS and seat belts are standard equipment on every Sakai roller sold in North America.
- **Failsafe Braking System** – The SV400-2 Series is equipped with a two brake, three-way failsafe system. A hydrostatic service brake is located at the forward-reverse lever. A wet disc,

spring-applied, hydraulically-released (SAHR) parking brake switch is located on the instrument panel. An emergency brake foot pedal activates both the hydrostatic and the SAHR brakes, and will automatically apply in the event of an engine or hydraulic system failure.



- **Patented Shock Isolation** – Sakai is well known for its patented shock isolation systems. These custom designed shock isolators are better designed and stronger than any other on the market today. Located between the chassis frame and the drum drive motor, the shock isolators reduce the transmission of vibration back to critical machine components as well as to the operator. Competitive machines place the shock isolators between the drum and the drive motor – meaning these isolators wear out faster, cause the machine to jerk with each change of direction and produce a rough surface.

Operator Comfort

The SV400-2 Series operator's station is a rubber isolated floating deck designed to minimize the transmission of vibration to the operator and is accessible from both sides of the machine. All instrumentation controls are conveniently located and offer excellent 360° visibility. The machines also provide exceptional side clearances for confined spaces.

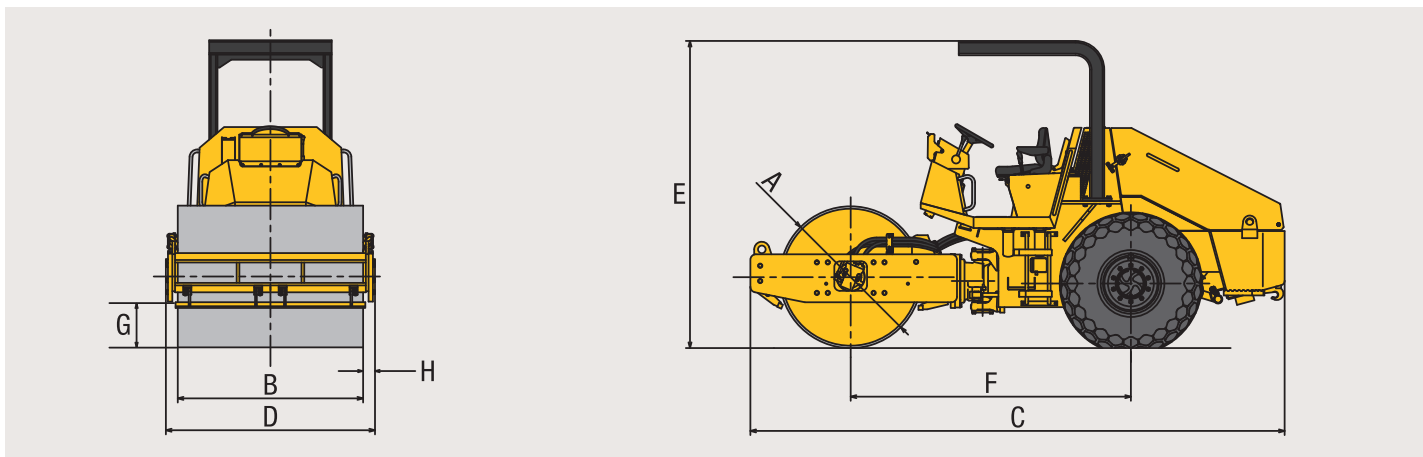
Superior Serviceability – Fast Support

The SV400-2 Series provides a fully opening engine hood for easy access to engine and hydraulic components. The hydraulic system includes conveniently located pressure gauge ports. The vibrator bearing lubrication system consists of an oil bath that keeps the system lubricated even on steep grades.

Sakai has been building high quality construction equipment since 1918. We manufacture more vibratory compactors annually than anyone else in the world. Sakai stocks component parts for all its products and if necessary, they are available via over-night dispatch from their North American headquarters in Georgia. Contact your local dealer for prompt assistance with all your application and service needs.



MODEL		SV400D-2	SV400T-2	SV400TB-2	SV400TF-2
Operating Weight	lbs	16,205	16,755	17,525	19,625
	kg	7,351	7,600	7,949	8,902
On Front Drum	lbs	7,715	8,265	9,035	11,135
	kg	3,500	3,749	4,098	5,051
On Rear Axle	lbs	8,490	8,490	8,490	8,490
	kg	3,851	3,851	3,851	3,851
Minimum Vibration Frequency	VPM	1,800	1,800	1,800	1,800
	Hz	30.0	30.0	30.0	30.0
Maximum Vibration Frequency	VPM	2,280	2,280	2,280	2,280
	Hz	38.0	38.0	38.0	38.0
Centrifugal Force	lbs	20,945 - 26,455	23,150 - 28,660	23,150 - 28,660	23,150 - 28,660
	kN	93.2 - 117.7	103 - 127.5	103 - 127.5	103 - 127.5
Nominal Amplitude	inches	0.028 - 0.055	0.028 - 0.055	0.028 - 0.055	0.02 - 0.035
	mm	0.71 - 1.4	0.71 - 1.4	0.71 - 1.4	0.51 - 0.9
Engine Make & Model		Deutz TCD 2011 L04 W			
Horsepower	hp / kW	100 / 74.6	100 / 74.6	100 / 74.6	100 / 74.6
Maximum Speed	mph / kmh	6.2 / 10.0	6.2 / 10.0	6.2 / 10.0	6.2 / 10.0
Gradability	percent	62	62	58	50
Tires		16.9 - 24 - 6PR	16.9 - 24 - 6PR	16.9 - 24 - 6PR	16.9 - 24 - 6PR
Fuel Tank Capacity	gallons / liters	48 / 182	48 / 182	48 / 182	48 / 182
Braking Types		Dynamic Hydrostatic, Wet Disc, SAHR with Footbrake			
Steering Type		Center-Point Articulated with Heavy-Duty Hitch			
Articulation Angle	degrees	37	37	37	37
Outside Turning Radius	inches / mm	193 / 4,902	193 / 4,902	193 / 4,902	193 / 4,902
DIMENSIONAL DATA					
Drum Diameter A	ins / mm	51 / 1,295	53 / 1,346	53 / 1,346	55 / 1,397
Drum Width B	ins / mm	67 / 102	67 / 102	67 / 102	67 / 102
Overall Length C	ins / mm	196 / 4,978	196 / 4,978	210 / 5,334	196 / 4,978
Overall Width D	ins / mm	76 / 1,930	76 / 1,930	89 / 2,261	76 / 1,930
Overall Height E	ins / mm	112 / 2,845	112 / 2,845	112 / 2,845	112 / 2,845
Wheelbase F	ins / mm	104 / 2,642	104 / 2,642	104 / 2,642	104 / 2,642
Curb Clearance G	ins / mm	16.5 / 419	16.5 / 419	16.5 / 419	16.5 / 419
Side Overhang H	ins / mm	4.3 / 110	4.3 / 110	4.3 / 110	4.3 / 110



SAKAI

MASTERS OF COMPACTION

Sakai America Inc.
 90 International Parkway, Adairsville, GA 30103
 Tel 770-877-9433 or toll free 800-323-0535
 Fax 770-877-9886 • www.sakaiamerica.com

SV400BROC808

Your authorized Sakai dealer:

