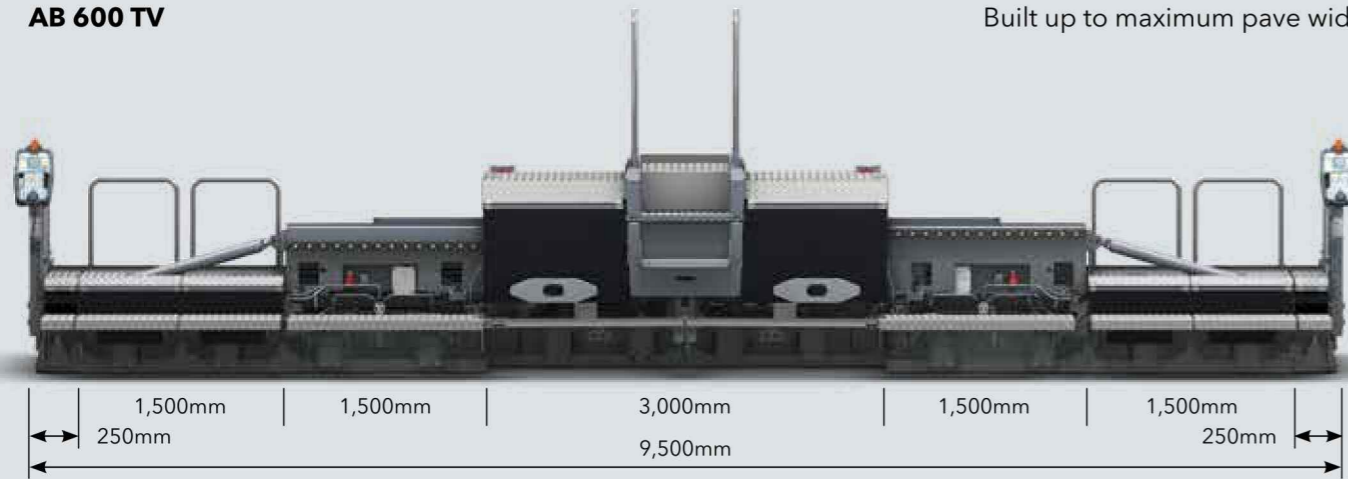


Screed options for the SUPER 3000-2

AB 600 TV

Built up to maximum pave width



Pave widths

- » Infinitely variable range from 3m to 6m.
- » Larger widths through the addition of bolt-on extensions up to a maximum of 9.5m.

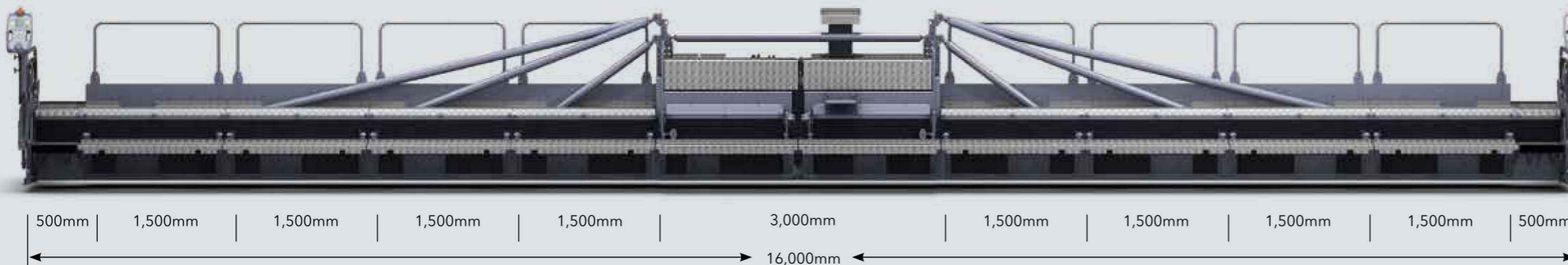
Compacting systems

- » AB 600 TV with tamper and vibrators
- » AB 600 TP1 with tamper and 1 pressure bar
- » AB 600 TP2 with tamper and 2 pressure bars
- » AB 600 TP2 Plus with tamper and 2 pressure bars for maximum precompaction



SB 300 TV

Built up to maximum pave width



Hydraulic Extensions for the SB 300 Fixed-Width Screed

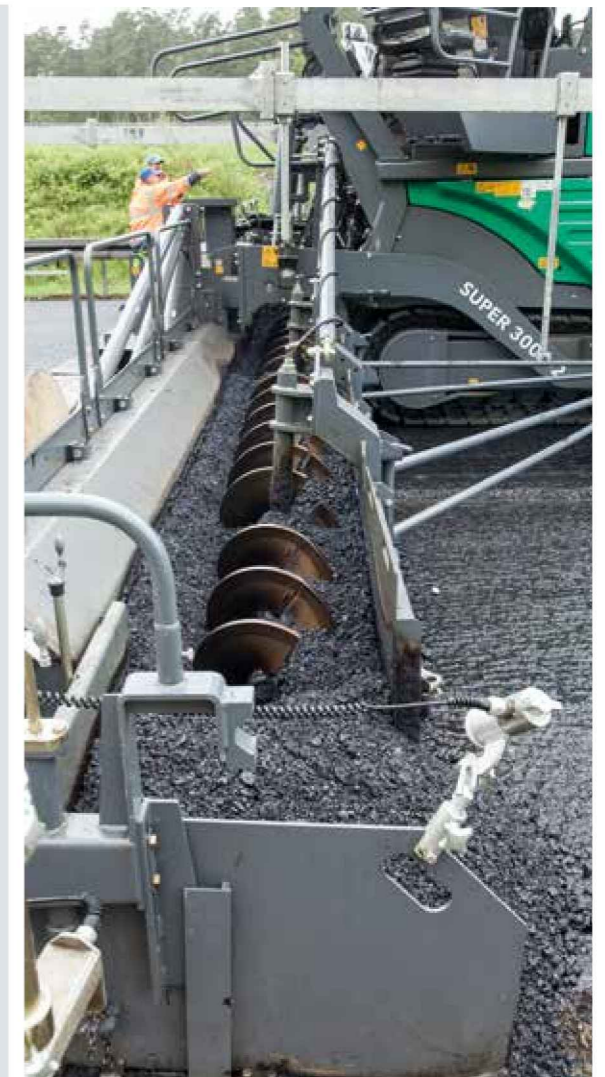
- » Turns the fixed screed into a variable screed.
- » Combines the advantages of Fixed-Width Screeds, i.e. large pave widths, with the variability of Extending Screeds.
- » Enhances the field of applications for Fixed-Width Screeds due to infinite variation in width within a range of 1.5m.
- » Saves time, as there is no need to mount and demount bolt-on extensions when it comes to adjusting the pave width.
- » Provides for non-stop paving quality.
- » The hydraulic extensions are available in the versions T (with tamper), TP1 (with tamper and 1 pressure bar) or TP2 (with tamper and 2 pressure bars).

Pave widths

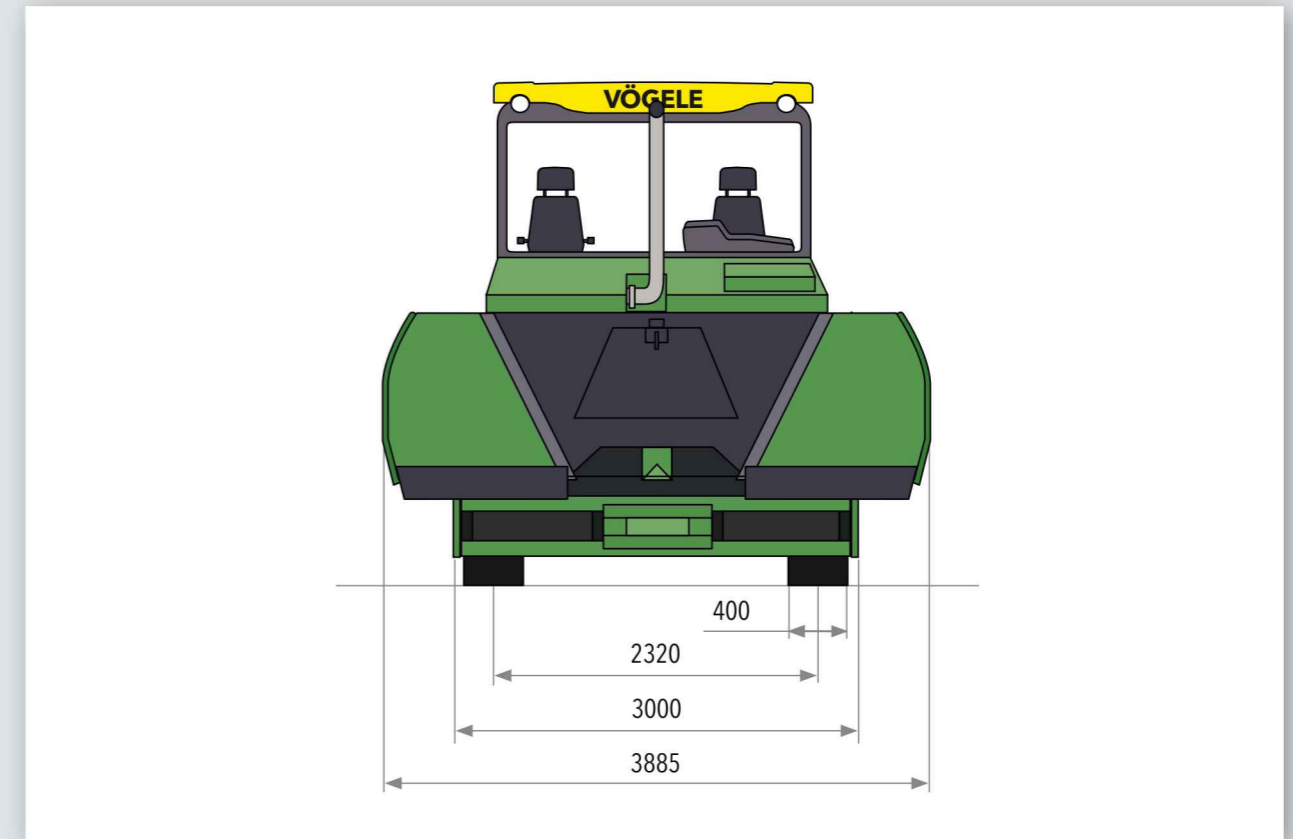
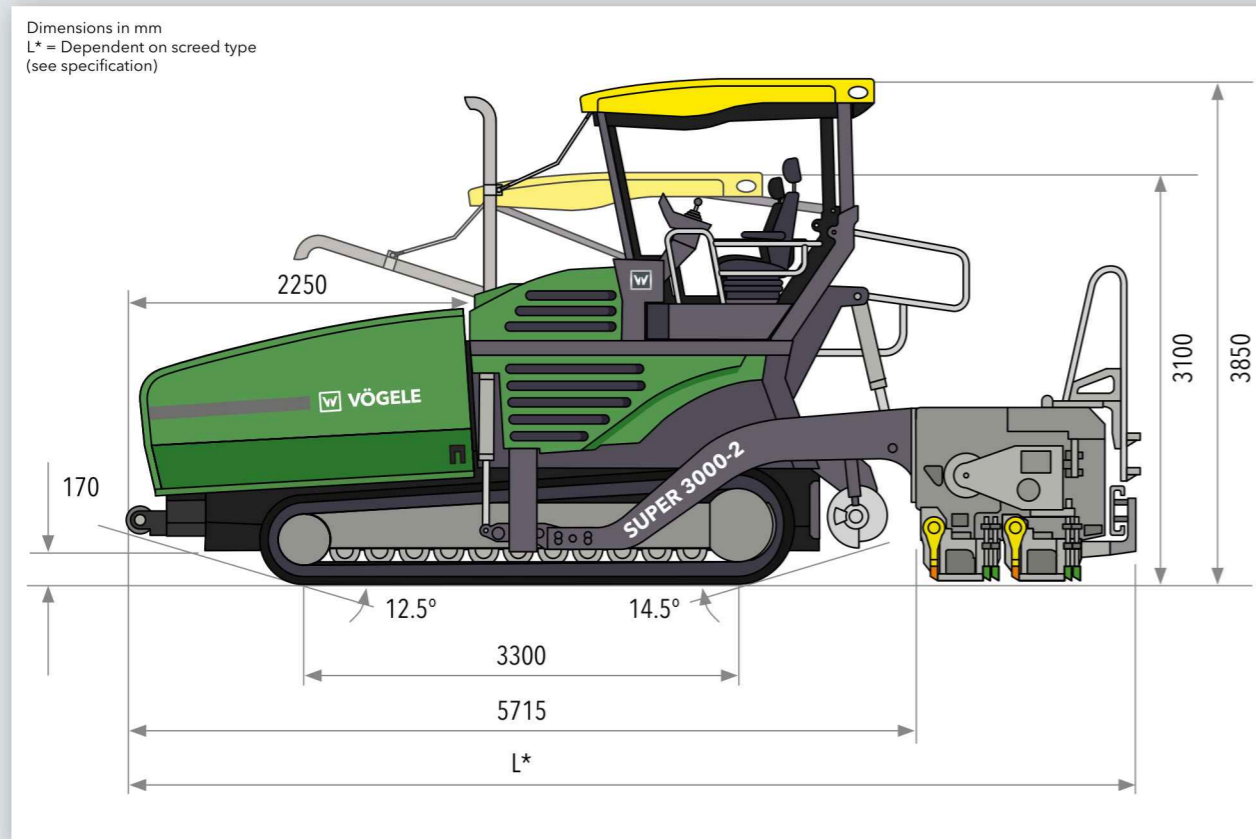
- » Basic width 3m. Larger widths through the addition of bolt-on extensions up to a maximum of 16m.
- » Thanks to 75cm hydraulic bolt-on extensions, users of fixed-width screeds can also benefit from the advantages of the VÖGELE Extending Screed technology.

Compacting systems

- » SB 300 TV with tamper and vibrators
- » SB 300 TP1 with tamper and 1 pressure bar
- » SB 300 TP2 with tamper and 2 pressure bars
- » SB 300 TVP2 with tamper, vibrators and 2 pressure bars



All the facts at a glance



Power unit	
Engine	6-cylinder diesel engine, liquid-cooled
Manufacturer	Deutz
Type	TCD 2015 V06 4V
Output	
Nominal	300kW at 1,800rpm (according to DIN)
ECO mode	292kW at 1,500rpm
Exhaust emissions standard	EU Stage 3a, US EPA Tier 3
Fuel tank	600 litres

Undercarriage	
Crawler tracks	provided with rubber pads
Ground contact	3,300mm x 400mm
Suspension	rigid
Track tension adjuster	elastomer
Track roller lubrication	lifetime
Traction drive	hydraulic, separate drive and electronic control provided for each crawler track
Speeds	
Paving	up to 24m/min., infinitely variable
Travel	up to 4.5km/h, infinitely variable
Steering	by alteration of track running speeds
Material hopper	
Hopper capacity	17.5t
Width	3,885mm
Feed height	620mm (centre of material hopper)
Push-rollers	oscillating
Position	can be displaced forwards by 100mm

Conveyors and augers	
Conveyors	2, with replaceable feeder bars, conveyor movement reversible for a short time
Drive	separate hydraulic drive provided for each conveyor
Speed	up to 43m/min., infinitely variable (manual or automatic)
Augers	2, with replaceable auger blades
Diameter	420mm
Drive	hydraulic, separate drive provided for each auger
Speed	up to 93rpm, infinitely variable
Height	infinitely variable by 20cm, hydraulic
Lubrication	centralized lubrication system with electrically driven grease pump

Screed options		
AB 600	basic width	3m
	infinitely variable range	3m to 6m
	maximum width (TV/TP1/TP2)	9.5m
SB 300	basic width	3m
	maximum width (TV)	16m
Screed versions	TV, TP1, TP2, TP2 Plus (AB 600), TVP2 (SB 300)	
Layer thickness	up to 50cm (SB 300)	
Screed heating	electric by heating rods	
Power supply	three-phase A.C. generator	
Dimensions (transport) and weights		
Length	tractor unit with screed	
AB 600	TV	7m
	TP1/TP2/TP2 Plus	7.1m
SB 300	TV/TP1/TP2/TVP2	6.9m
Weights	tractor unit with screed	
AB 600 TV	pave widths up to 6m	28.7t
	pave widths up to 9.5m	32.6t

Key: AB = Extending Screed SB = Fixed-Width Screed TV = with tamper and vibrators TP1 = with tamper and 1 pressure bar TP2 = with tamper and 2 pressure bars TVP2 = with tamper, vibrators and 2 pressure bars TP2 Plus = with special tamper, 2 pressure bars and additional weights

Subject to technical modification.



Your VÖGELE QR Code
will take you directly
to the "SUPER 3000-2"
on our website.



JOSEPH VÖGELE AG

Joseph-Vögele-Str. 1
67075 Ludwigshafen · Germany
www.voegele.info

T: +49 621 / 81 05 0
F: +49 621 / 81 05 461
marketing@voegele.info



® ERGOPLUS, InLine Pave, NAVITRONIC, NAVITRONIC Basic, NAVITRONIC Plus, NIVELTRONIC, NIVELTRONIC Plus, RoadScan, SprayJet, VÖGELE, VÖGELE PowerFeeder, PaveDock, PaveDock Assistant, AutoSet, AutoSet Plus, AutoSet Basic, ErgoBasic and VÖGELE-EcoPlus are registered Community Trademarks of JOSEPH VÖGELE AG, Ludwigshafen/Rhein, Germany. PCC is a registered German Trademark of JOSEPH VÖGELE AG, Ludwigshafen/Rhein, Germany. ERGOPLUS, NAVITRONIC Plus, NAVITRONIC BASIC, NIVELTRONIC Plus, SprayJet, VISION, VÖGELE, VÖGELE PowerFeeder, PaveDock, PaveDock Assistant, AutoSet, AutoSet Plus, AutoSet Basic and VÖGELE-EcoPlus are trademarks registered in the US Patent and Trademark Office to JOSEPH VÖGELE AG, Ludwigshafen/Rhein, Germany. Legally binding claims cannot be derived from written information or pictures contained in this brochure. Pictures may include optional extras. We reserve the right to make technical or design alterations.